

T:\2332 Centre Point\02-Sheets\25 Series External Wall\2332(25)534_Revolving Door Canopy detail.dgn
29/04/2013
2332
Conran

MEZZANINE FFL
+28.570m

UNDERSIDE
OF SLAB
+28.315m

UNDERSIDE
OF CANOPY
+28.390m

57
19

New concrete slab with terrazzo floor finish - refer to Structural Engineers drawings

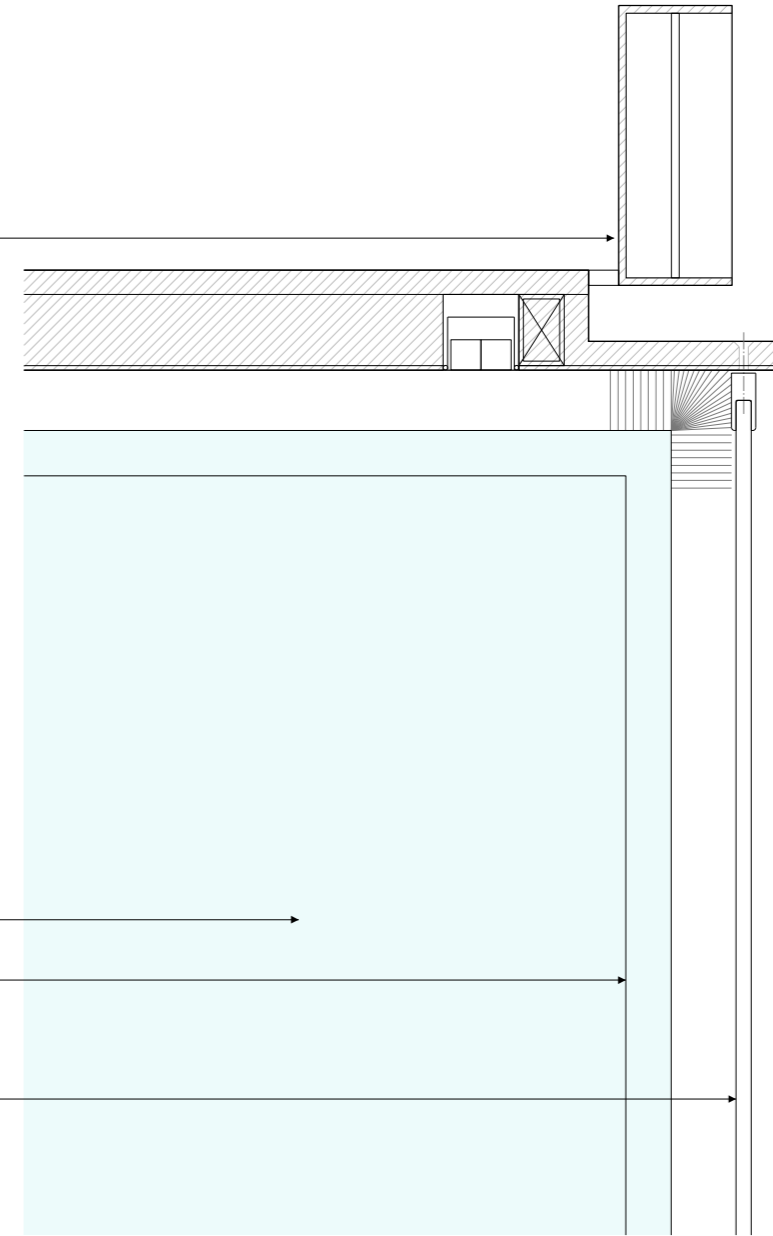
'CENTREPOINT' signage to be mounted to top of lid and around the perimeter of external semi-circle of revolving door drum lid - details to be developed with Speirs and Major

Composite canopy structure to contain cabling routes for lighting, signage and sensors
LED strip light around full perimeter of drum (circular) without breaks - detail to be developed with Speirs and Major
RHS used as a conduit for lighting power supply
Polished chrome clad canopy

New exposed visual concrete soffit

4 Rigid glass leaves consisting of 6mm and 6mm low iron laminated safety glass
Door leaves framed in thermally broken solid machined stainless steel 30mm profiles complete with natural horsehair brush strip.

Drum walls in one piece of curved glass



① DETAIL 1:5

② DETAIL 1:5

All dimensions must be checked on site and not scaled from this drawing. © Conran and Partners Limited

Rev	Date	Reason	By	Checked	Rev	Date	Reason	By	Checked
-	30.04.13	Stage E	PG	AS					

Notes
The cladding configuration shown is based on structural dimensions taken from the original design drawings
Structural dimensions are subject to confirmation by site survey
For floor build up details refer to drawing series (43) Floor Finishes

Project: Centre Point
Client: Almacantar
Drawing title: Revolving Door Canopy Detail

Scale 1:5 Date: April 2013 Drawn by: PG
Project number: 2332 Drawing No: (25)534 Rev:-
Status: STAGE E Checked by: AS

CONRAN+
PARTNERS
Architects Designers

LONDON OFFICE
Conran Building
22 Shad Thames,
London SE1 2YU
Telephone +44 (0) 20 7403 8899
Email cp@conran.com