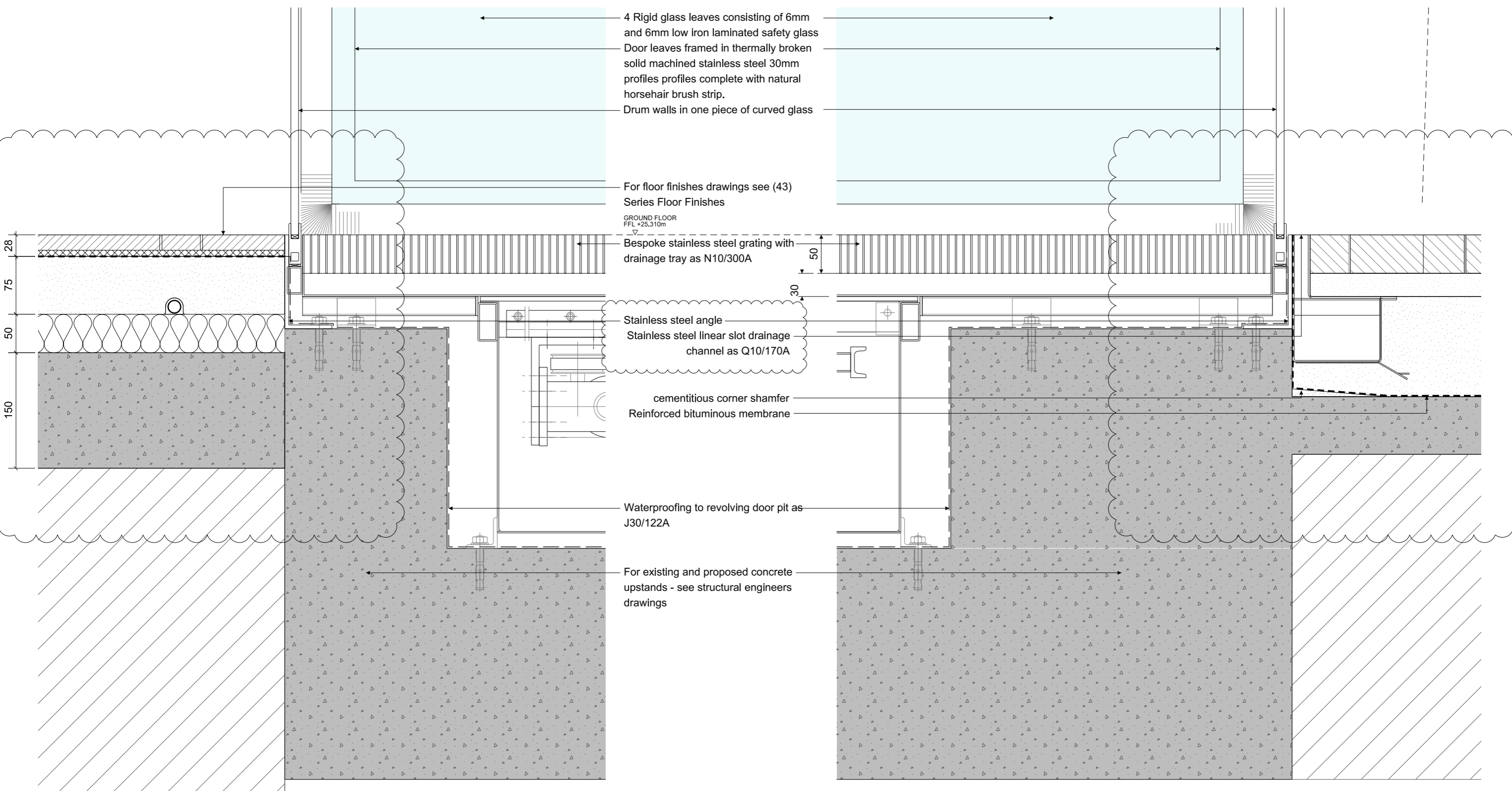


T:\2332 Centre Point\02-Sheets\25_Series External Wall\25532_Revolving Door Threshold Detail.dwg

27/03/2014

2332

Conran



① DETAIL 1:5

② DETAIL 1:5

All dimensions must be checked on site and not scaled from this drawing. © Conran and Partners Limited

Rev	Date	Reason	By	Checked	Rev	Date	Reason	By	Checked
-	30.04.13	Stage E	PG	AS					
A	16.12.13	Specification added	PG	AS					
B	31.03.14	Floor build up added Annotation updated	NT	AS					

Notes
 The cladding configuration shown is based on structural dimensions taken from the original design drawings
 Structural dimensions are subject to confirmation by site survey
 For floor build up details refer to drawing series (43) Floor Finishes

Project: Centre Point
 Client: Almacantar
 Drawing title: Revolving Door Threshold Detail

Scale 1:5 Date: April 2013 Drawn by: PG
 Project number: 2332 Drawing No: (25)533 Rev: B
 Status: STAGE E Checked by: AS

CONRAN+ PARTNERS
 Architects Designers

LONDON OFFICE
 Conran Building
 22 Shad Thames,
 London SE1 2YU
 Telephone: +44 (0) 20 7403 8899
 Email: cp@conran.com