

Silver anodised aluminium box section with standard capping

EPDM by facade contractor bonded to concrete  
Silver anodised aluminium flashing

Phenolic insulation between external wall and steel post

Existing black stone cill retained

50

Galvanised steel shelf angle with mullion stub connector

Phenolic insulation between steel posts

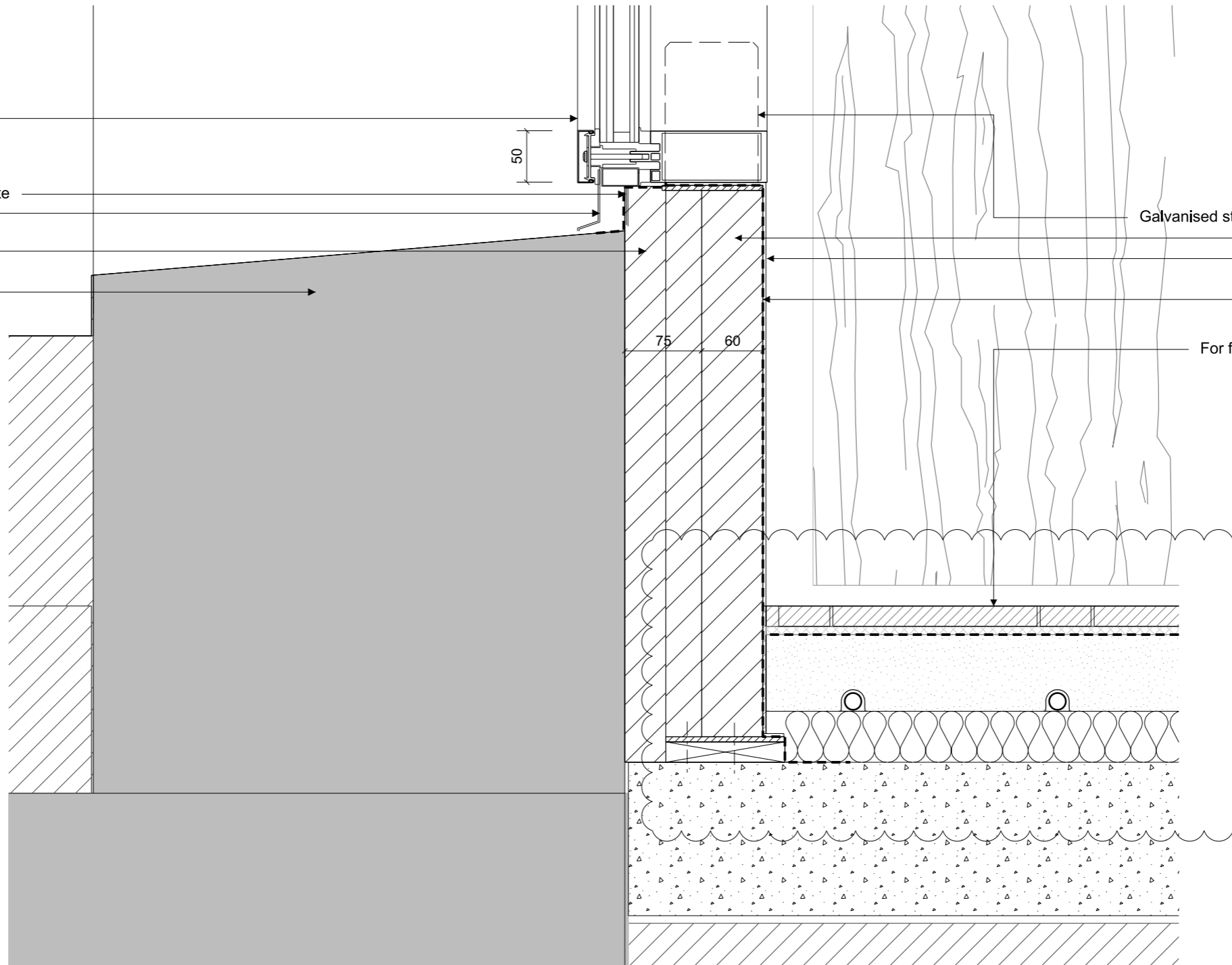
Exposed silver anodised aluminium facing panel as internal finish

Vapour barrier bonded to underside of transom and floor insulation panel

For floor buildup detail refer to drawing (43) 119

OUTSIDE

INSIDE



1 BASE DETAIL 1:5

All dimensions must be checked on site and not scaled from this drawing. © Conran and Partners Limited

Rev	Date	Reason	By	Checked	Rev	Date	Reason	By	Checked
-	03.08.12	Stage D Draft	TG	AS					
A	31.08.12	STAGE D	PG	AS					
B	30.04.13	Stage E	PG	AS					
C	31.03.14	Floor build up updated	NT	AS					

Notes  
The cladding configuration shown is based on structural dimensions taken from the original design drawings.  
Structural dimensions are subject to confirmation by site survey.  
For floor build up details refer to drawing series (43) Floor Finishes

Project: Centre Point  
Client: Almacantar  
Drawing title: Ground Floor and Mezzanine Details  
Base Detail  
Scale 1:5@A3 Date: August 2012 Drawn by: TG  
Project number: 2332 Drawing No: (25)523 Rev: C  
Status: STAGE E Checked by: AS

**CONRAN+ PARTNERS**  
Architects Designers  
LONDON OFFICE  
Conran Building  
22 Shad Thames,  
London SE1 2YU  
Telephone +44 (0) 20 7403 8899  
Email cp@conran.com