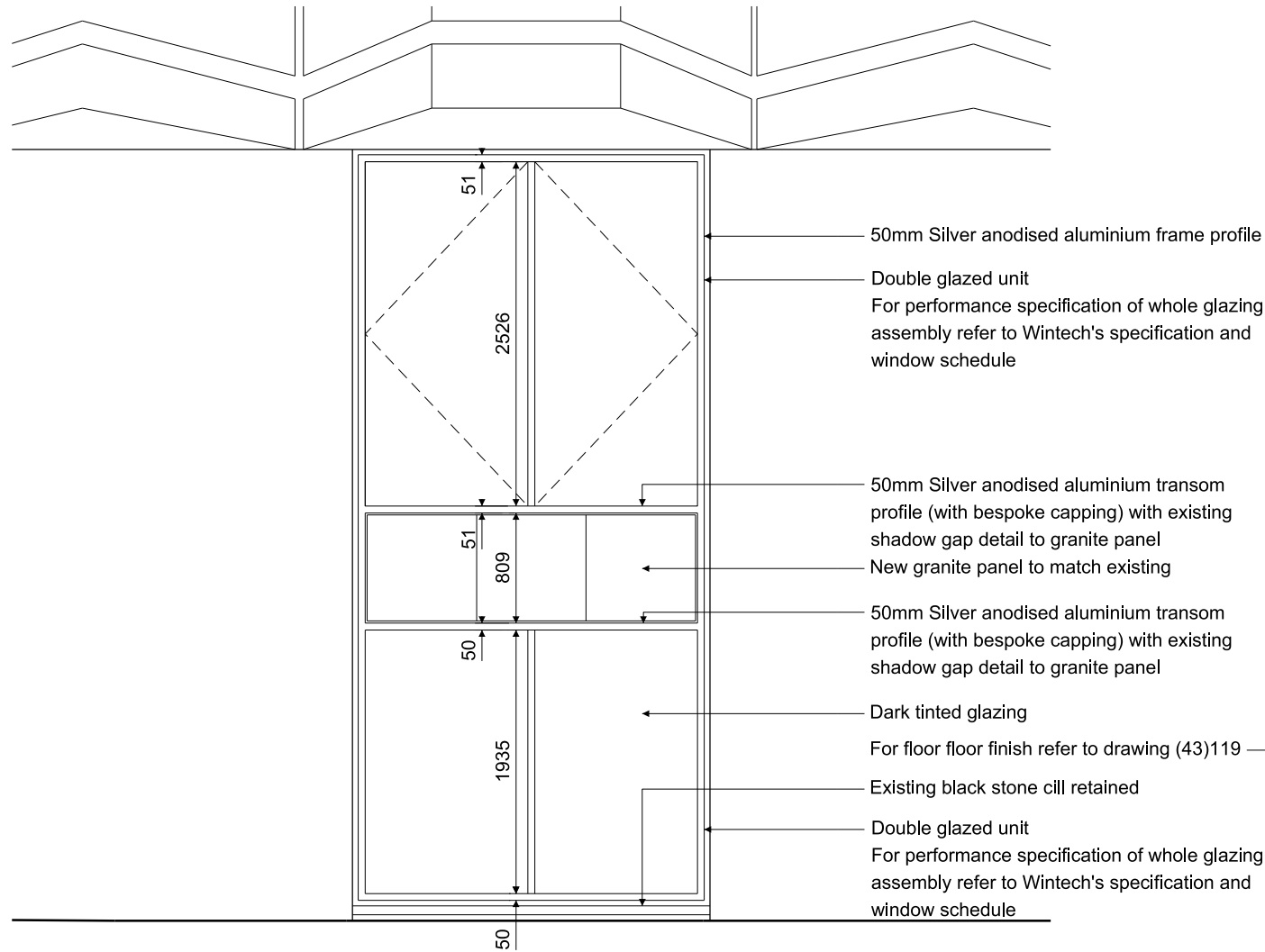
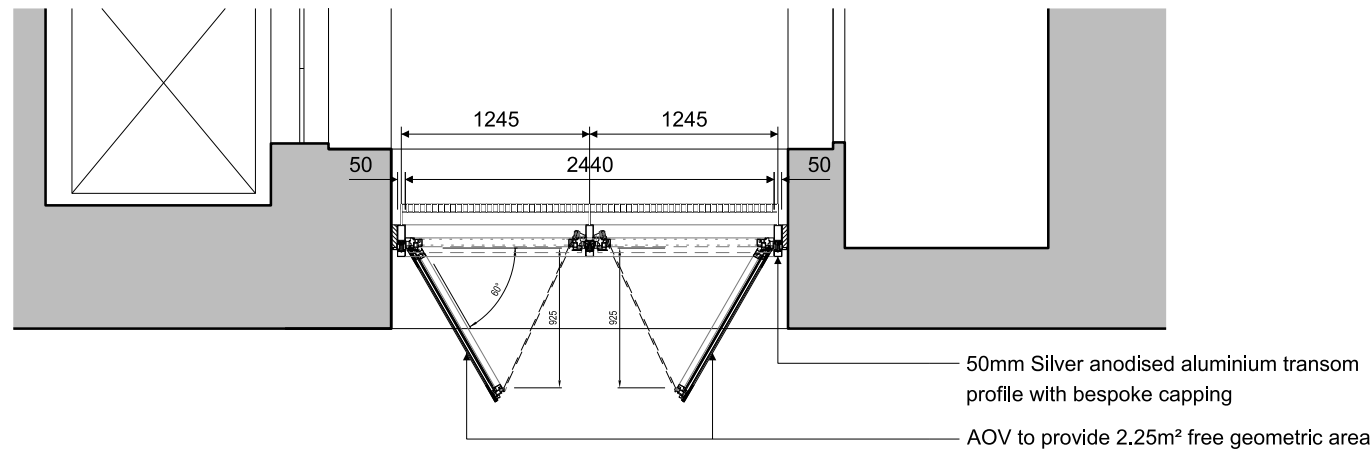


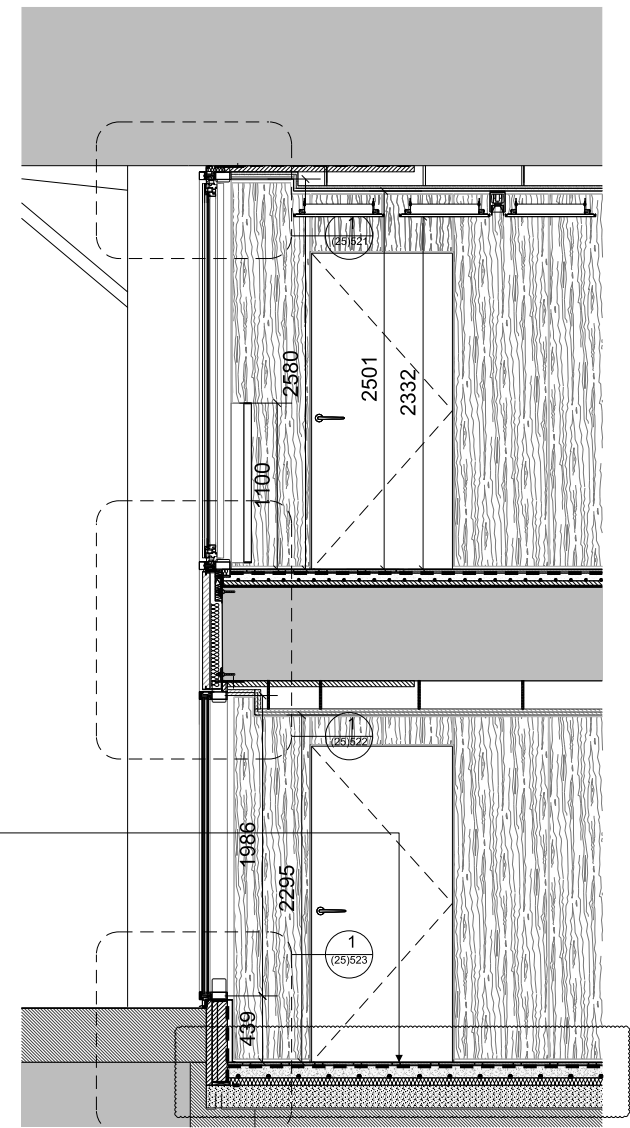
27/03/2014 2332 Conran \\conran-partners\projects\2332 Centre Point\02-Sheets\25 Series External Wall\2332(25)520\_Ground-Mezzanline End Bay Window Details.dgn



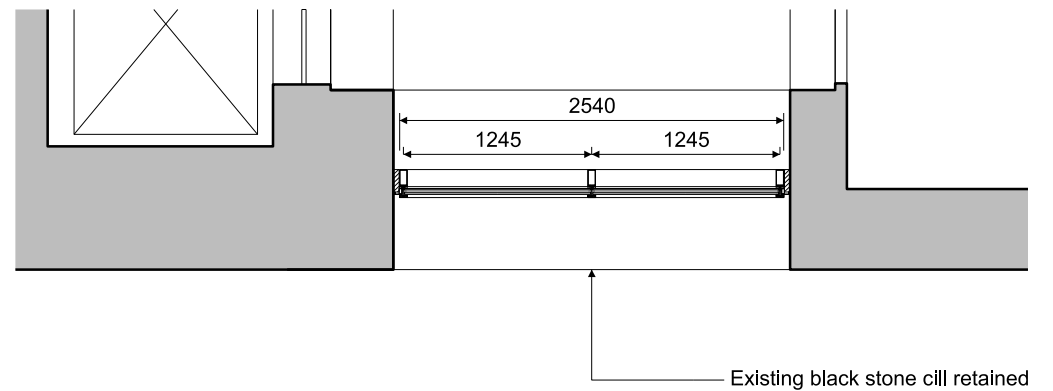
1 CORE WINDOW ELEVATION 1:50



2 CORE WINDOW PLAN AT MEZZANINE LEVEL 1:50



3 CORE WINDOW SECTION 1:50



4 CORE WINDOW PLAN AT GROUND LEVEL 1:50

All dimensions must be checked on site and not scaled from this drawing. © Conran and Partners Limited

Rev	Date	Reason	By	Checked	Rev	Date	Reason	By	Checked
-	03.08.12	Stage D Draft	TG	AS					
A	31.08.12	STAGE D	PG	AS					
B	30.04.13	Stage E	PG	AS					
C	21.11.13	AOV Guarding added to drawing	PG	AS					
D	31.03.14	Floor build up updated	NT	AS					

Notes

The cladding configuration shown is based on structural dimensions taken from the original design drawings. Structural dimensions are subject to confirmation by site survey. For floor build up details refer to drawing series (43) Floor Finishes

Project: Centre Point  
Client: Almacantar  
Drawing title: Ground Floor and Mezzanine Details  
End Bay Window  
Scale 1:1:50@A3 Date: August 2012 Drawn by: TG  
Project number: 2332 Drawing No: (25)520 Rev: D  
Status: STAGE E Checked by: AS

**CONRAN+ PARTNERS**  
Architects Designers  
LONDON OFFICE  
Conran Building  
22 Shad Thames,  
London SE1 2YU  
Telephone +44 (0) 20 7403 8899  
Email cp@conran.com