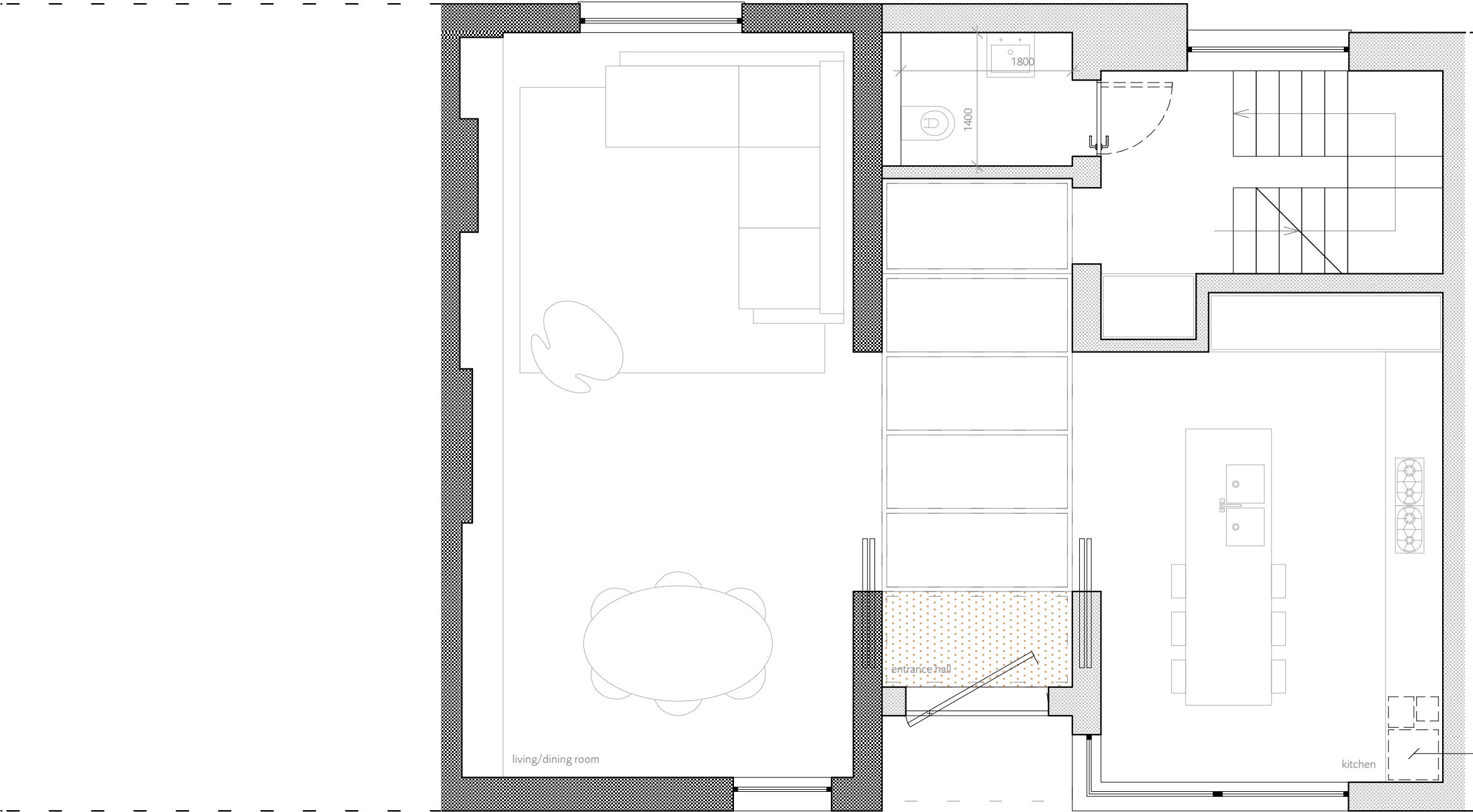


© Dols Wong Architects. this drawing may not be copied, altered or reproduced in any way or passed to a third party without their written authority
report all discrepancies to the architects or engineers before commencing construction or fabrication
read in conjunction with all other relevant architects and engineer drawings, schedules and specifications
-do not scale off this drawing ref. noted dims only

communal garden to the rear of Cliff Road Studios



mixed
recyclables (30
litre bin, W320 x
H453 x D256),
organic kitchen
waste bin (7 litre
bin, W252 x
H252 x D229)
and non
recyclable refuse
bin, to be stored
in kitchen units.
(as per Design,
Camden Planning
Guidance,
CPG1).

f 04.01.16
general revision
e 11.12.15
discharge of condition 8,
details of internal provision for
at least 3 cycles together with
storage of refuse and
recycling
d 10.12.14
general revision
c 26.08.14
for planning

104, Camden Mews 102, Camden Mews 100, Camden Mews

0 1 5m

proposed ground floor plan	121f
102, Camden Mews London NW1 9AG	1108 1:50 @A3
Dols Wong architects	
The Studio 61, Brondesbury Road London NW6 6BP 44 (0)20 7372 2121 architects@dols Wong.com	