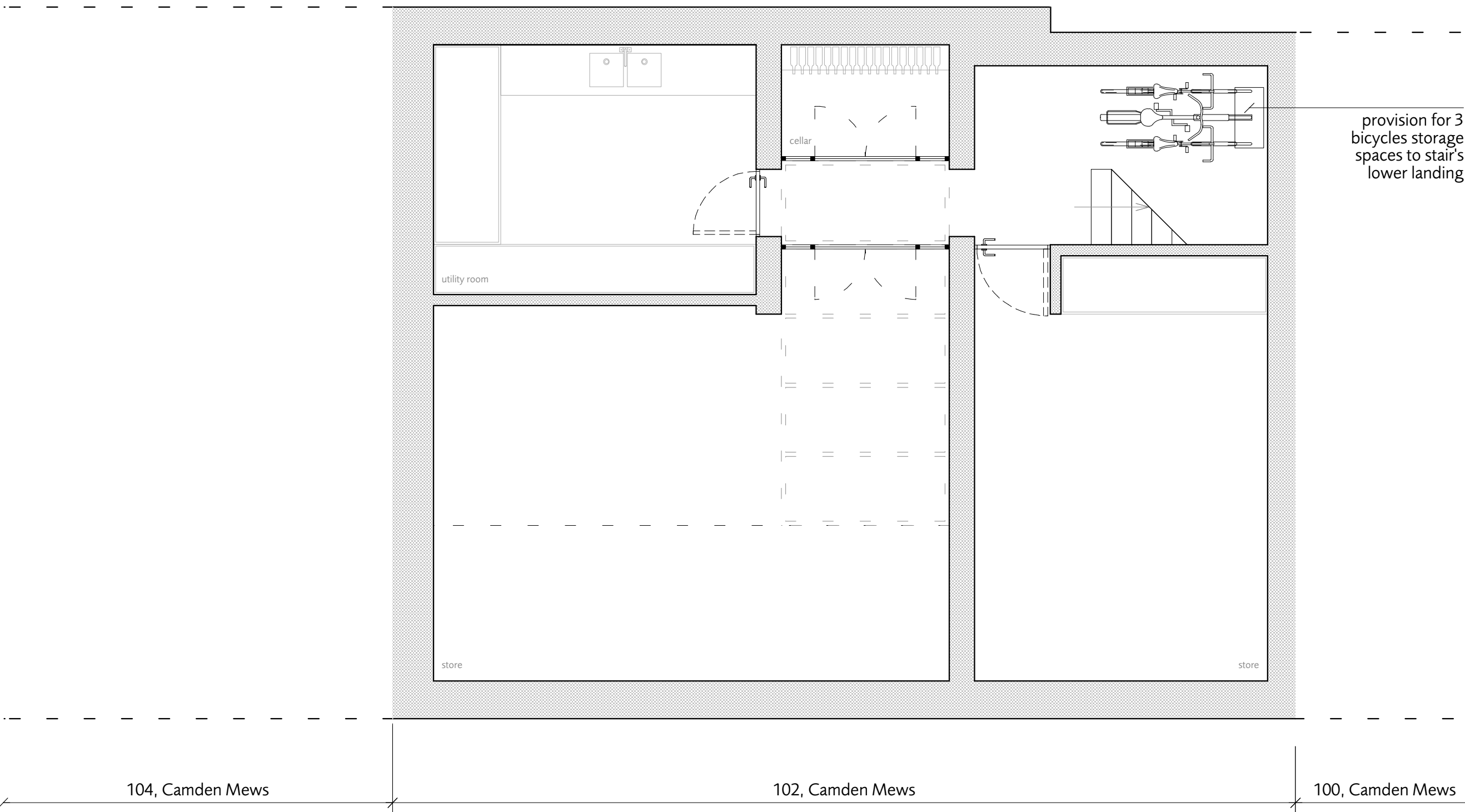


© Dols Wong Architects. This drawing may not be copied, altered or reproduced in any way or passed to a third party without their written authority. Report all discrepancies to the architects or engineers before commencing construction or fabrication. Read in conjunction with all other relevant architects and engineer drawings, schedules and specifications. Do not scale off this drawing. ref. noted dims only.



provision for 3 bicycles storage spaces to stair's lower landing

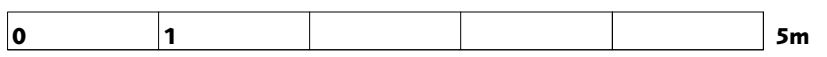
f 04.01.16
general revision
e 11.12.15
discharge of condition 8,
details of internal provision for
at least 3 cycles together with
storage of refuse and
recycling
d 10.12.14
general revision
c 26.08.14
for planning

proposed basemet plan **120f**

102, Camden Mews
London NW1 9AG 1108
1:50 @A3

Dols Wong
architects

The Studio
61, Brondesbury Road
London NW6 6BP
44 (0)20 7372 2121 architects@dols Wong.com



104, Camden Mews

102, Camden Mews

100, Camden Mews