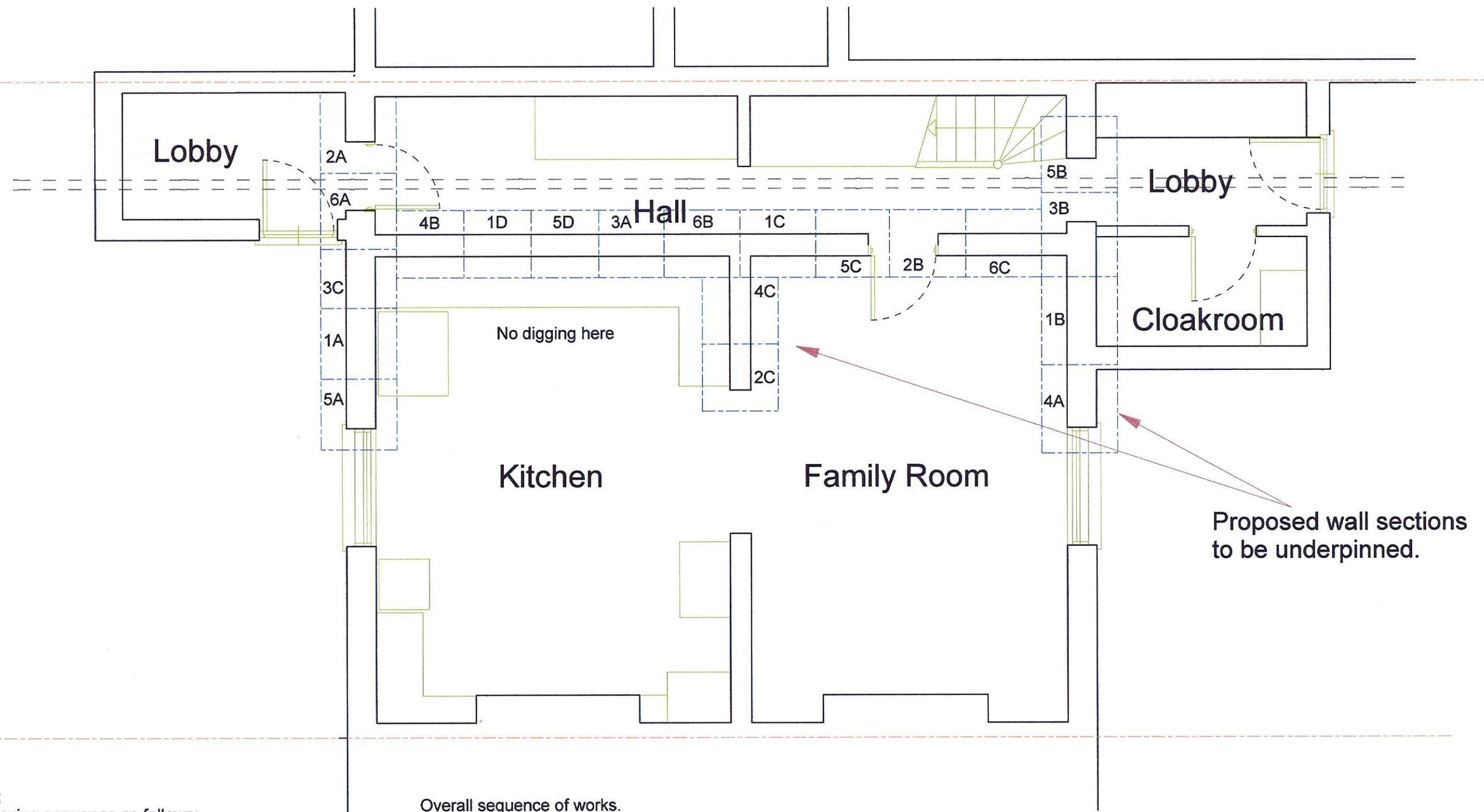


# DOWNSHIRE HILL



## NOTES:

Underpinning sequence as follows:

- 1> pins A, B, C D together.
- 2> pins A, B, C together.
- 3> pins A, B, C together.
- 4> pins A, B, C together.
- 5> pins A, B, C, D together.
- 6> pins A, B, C together.

Six weeks excavation with 1 week to follow for concrete and rebuild and drypack.

Re-instate drainage and blind and backfill concrete hall and rear family room floors, 2 weeks.

## Overall sequence of works.

1. Remove all fittings and fixtures.
2. Safety services and fit temporary connections
3. Seal off kitchen arch and main stairwell.
4. Lift family room floor.
5. Lift paving front yard and protect with roof over steps and part yard.
6. Protect stairwell timbers.
7. Excavate along hall and underpin.
8. Deconstruct front steps and lobby.
9. Reinstate drainage and concrete floors.
10. Rebuild Porch and Steps.
11. Relay front paving.
12. Refurbish rear WC.
13. Reinstate finishes, woodwork and services.
14. Screens down, clean up.
15. Redecorate and clean.

Proposed wall sections to be underpinned.

**DRAFT UNDERPIN SEQUENCE**  
44 Downshire Hill, London NW3 1NU

1:50 28 Feb15 53020-2

**Claymore Design & Build**

Copyright Claymore Build Ltd