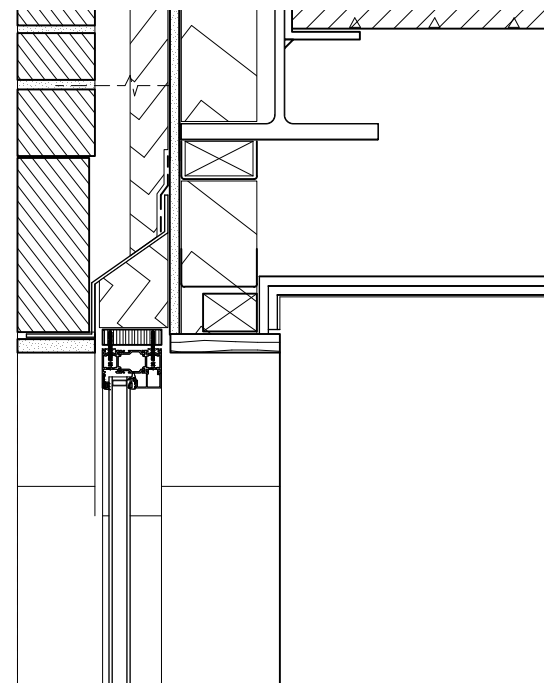
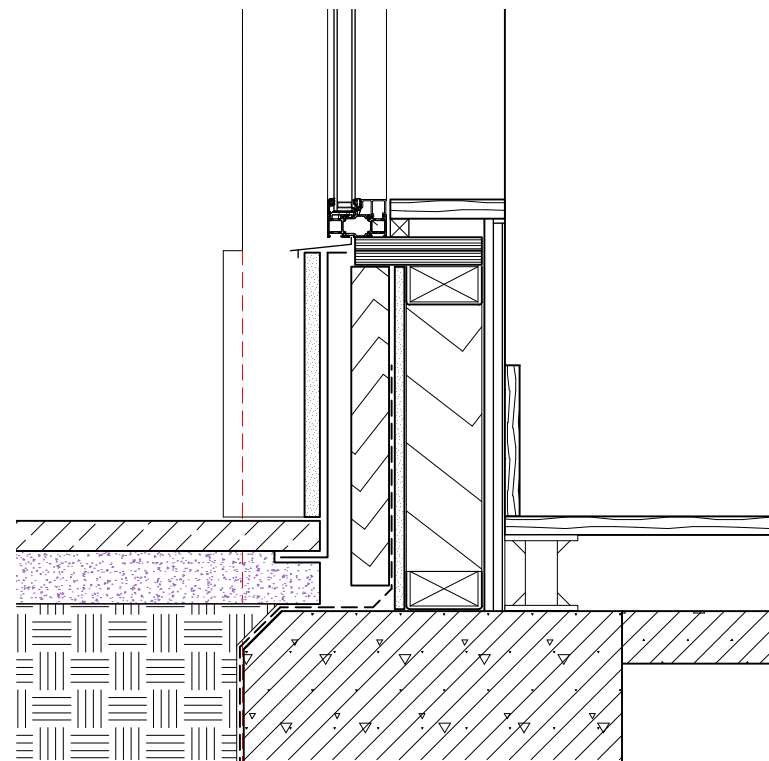


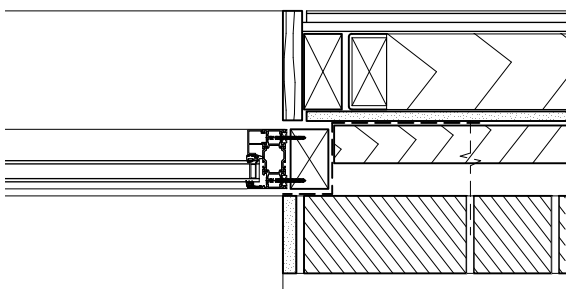
elevation 1:20



2. head detail 1:10



1. sill detail 1:10



3. jamb detail 1:10

DETAILS

Brick work: to match sample panel
 Bond: flemish
 Mortar: lime/ cement
 *Opening sizes set out to brick dims.

Reveal: half brick deep, finished in stucco render.
 Stall riser: stucco render

Window System:
 ppc aluminium window system
 Comar 9P.i or similar approved.
 White finish.
 (Incorporating thermally broken sections with double glazing).

Notes:

Do not scale off drawing!
 Work only to noted dimensions

Check all dimensions on site prior to commencement

Notify the architect immediately of any discrepancy

Project:

147 Kentish Town Road

Drawing Title:

Castle Road Elevation
 Bay Study 1:
 ground floor typical opening

Drawing No.:

1509_1211

Scale@A1:

N/A

Drawn:

RP

Scale@A3:

N/A

First Drawn:

12.12.15

Revision:

-

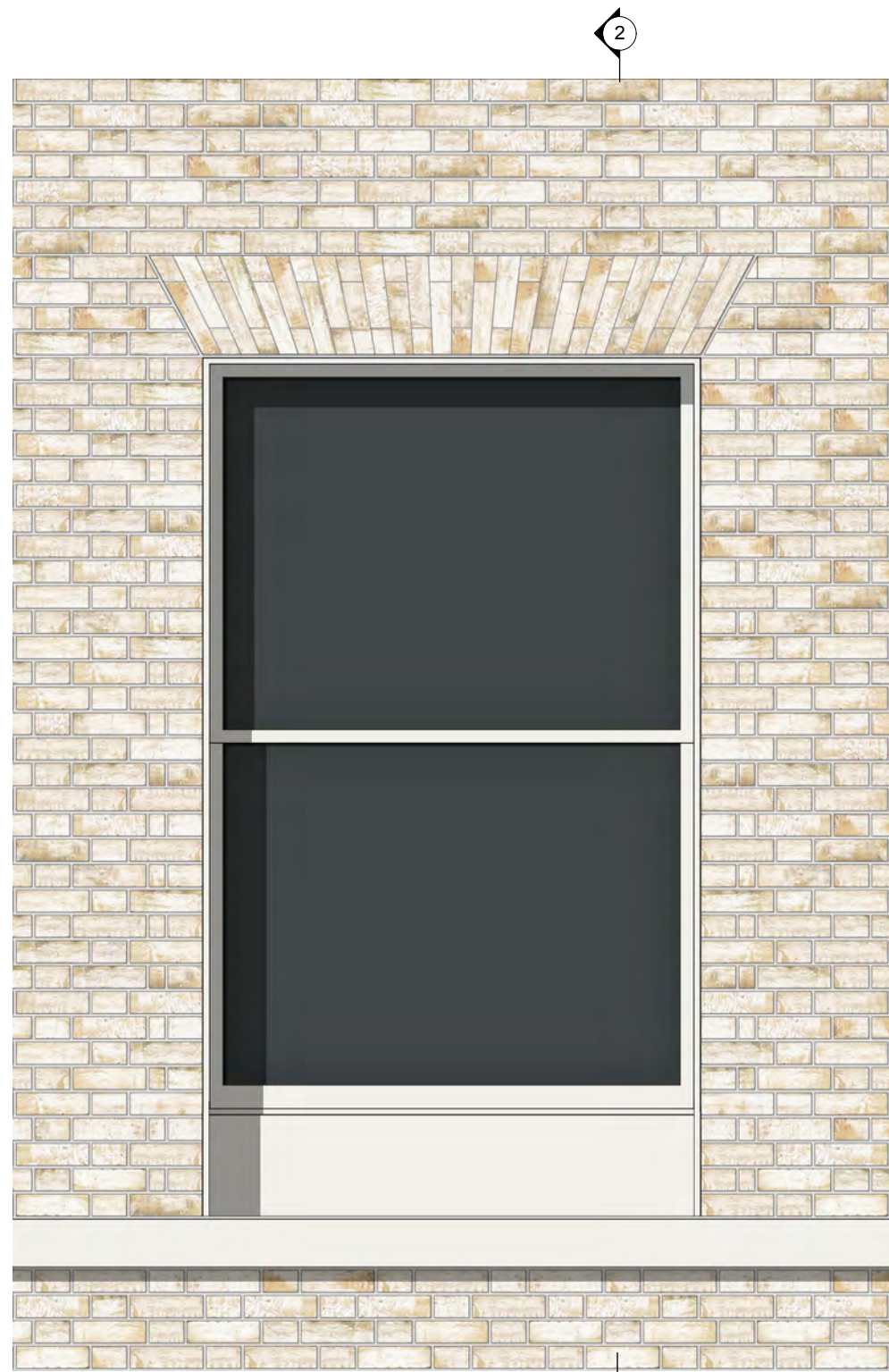
Rev. Date:

-

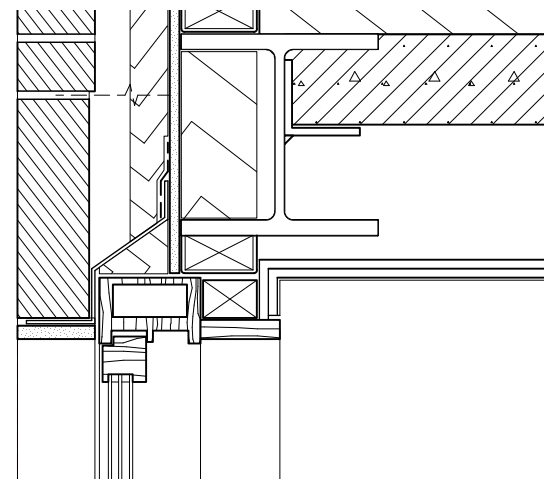
Checked:

RP

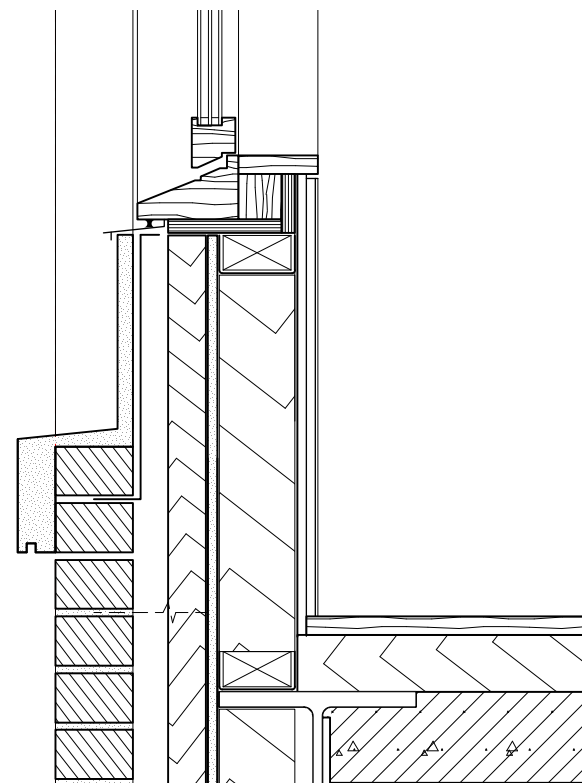
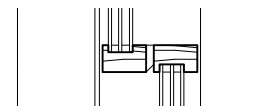
ROMAN PARDON
 ARCHITECTURE & DESIGN



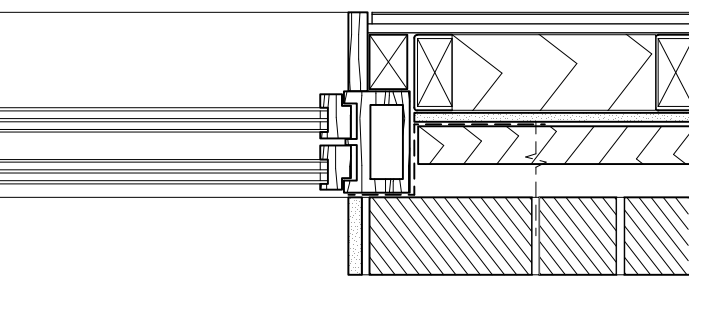
elevation 1:20



2. head detail 1:10



1. sill detail 1:10



3. jamb detail 1:10

DETAILS

Brick work: to match sample panel
 Bond: flemish
 Mortar: lime/ cement
 *Opening sizes set out to brick dims.

Reveal: half brick deep, finished in stucco render.
 Stall riser: stucco render
 String course: 150mm high in stucco render

Window System:
 timber sash window by Chase Windows or similar approved.
 White painted finish.
 (Incorporating triple glazing).
 U Value: 1.3 W/m2.K

Notes:

Do not scale off drawing!
 Work only to noted dimensions

Check all dimensions on site prior to commencement

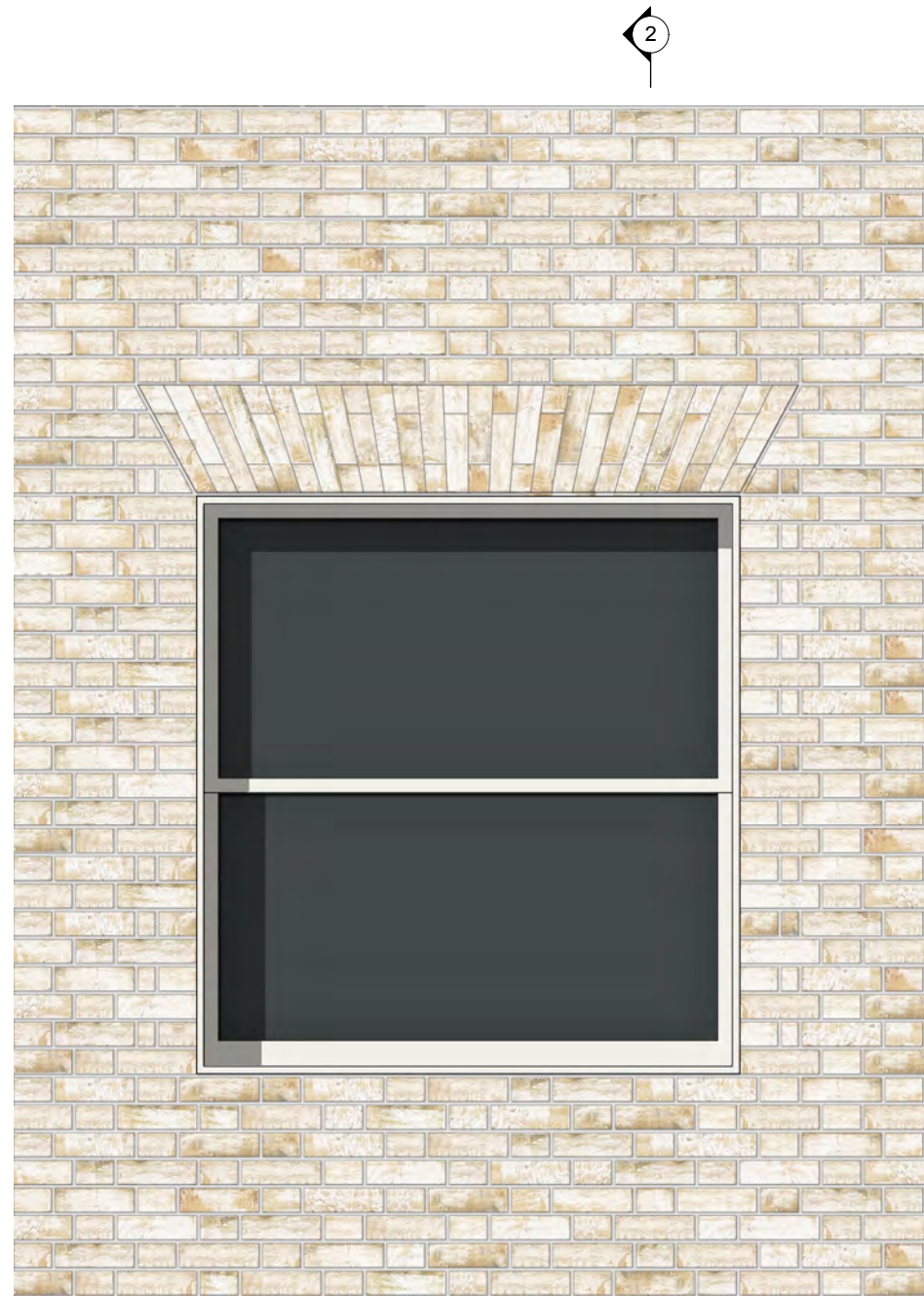
Notify the architect immediately of any discrepancy

Project:
 147 Kentish Town Road

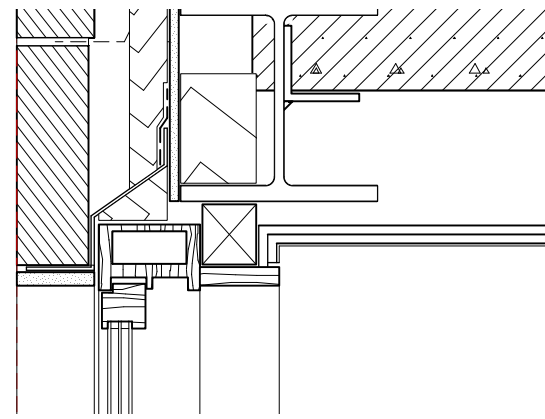
Drawing Title:
 Castle Road Elevation
 Bay Study 2:
 1st floor typical window

Drawing No.:	1509_1212	Revision:	-
Scale@A1:	N/A	Scale@A3:	N/A
Scale@A3:	N/A	Rev. Date:	-
Drawn:	RP	First Drawn:	12.12.15
Checked:	RP	Checked:	RP

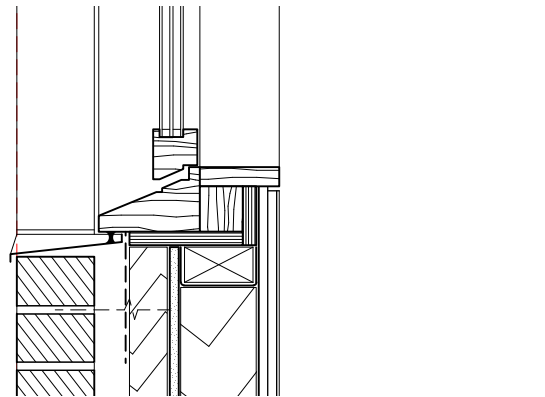
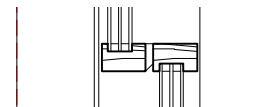
ROMAN PARDON
 ARCHITECTURE & DESIGN



elevation 1:20



2. head detail 1:10



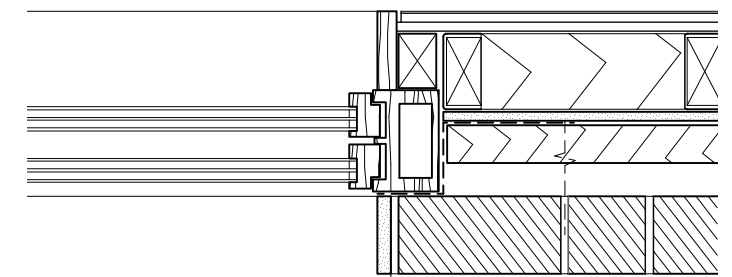
1. sill detail 1:10

DETAILS

Brick work: to match sample panel
 Bond: flemish
 Mortar: lime/ cement
 *Opening sizes set out to brick dims.

Reveal: half brick deep, finished in stucco render.

Window System:
 timber sash window by
 Chase Windows or similar approved.
 White painted finish.
 (Incorporating triple glazing).
 U Value: 1.3 W/m2.K



3. jamb detail 1:10

Notes:

Do not scale off drawing!
 Work only to noted dimensions

Check all dimensions on
 site prior to commencement

Notify the architect
 immediately of any discrepancy

Project:

147 Kentish Town Road

Drawing Title:

Castle Road Elevation
 Bay Study 3:
 2nd floor typical window

Drawing No.:

1509_1213

Scale@A1:

N/A

Drawn:

RP

Scale@A3:

N/A

First Drawn:

12.12.15

Revision:

-

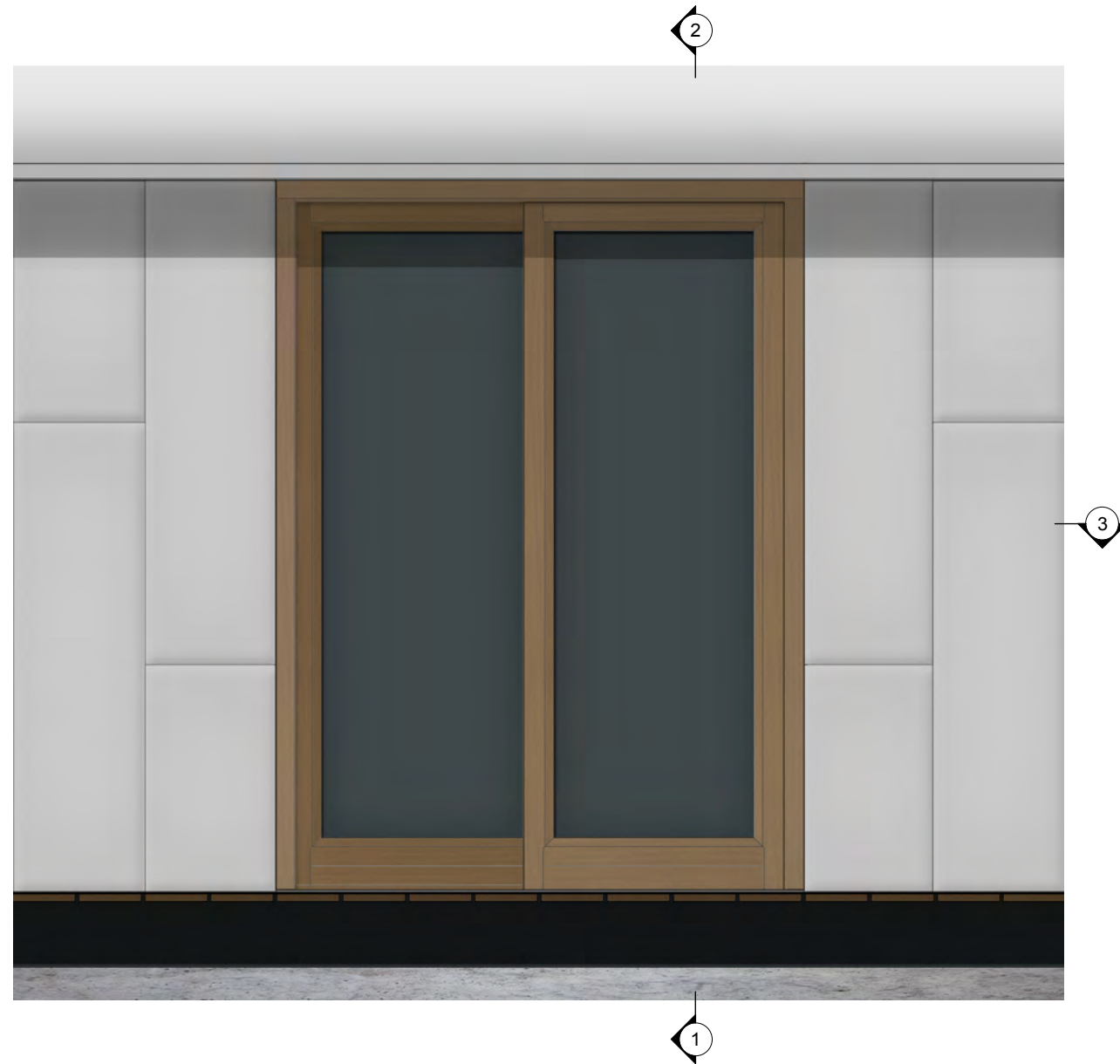
Rev. Date:

-

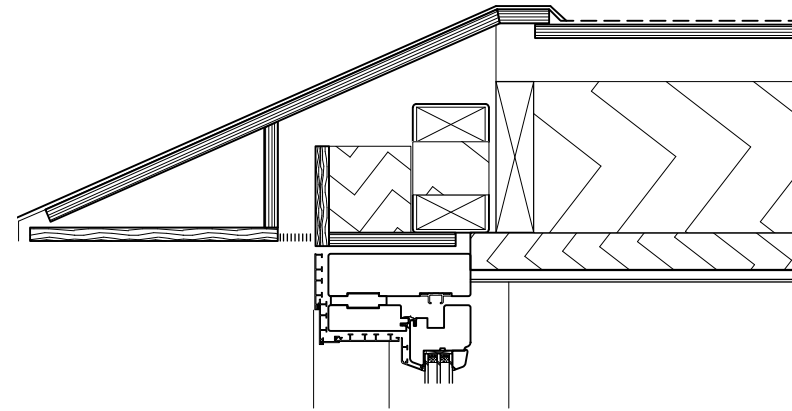
Checked:

RP

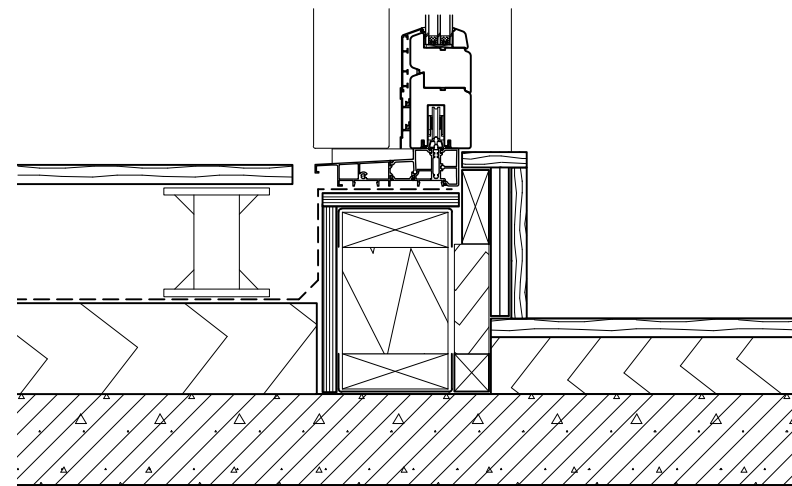
ROMAN PARDON
 ARCHITECTURE & DESIGN



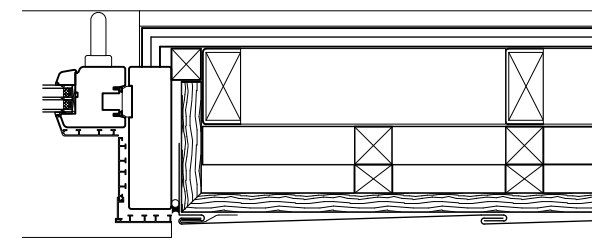
elevation 1:20



2. head detail 1:10



1. sill detail 1:10



3. jamb detail 1:10

DETAILS

Cladding: zinc
 Rheinzink flat lock vertical tiling
 in 400 x 1400 staggered panels
 or similar approved.
 Finish: bright-rolled

Eaves: zinc
 Rheinzink flat lock tiling
 or similar approved.
 Finish: bright rolled

Door System:
 Olsen Thermo HS or similar approved
 timber lift and slide doors
 with aluminium external cladding.
 Finish: anodised, bronze.
 U Value: 1.0 W/m2.K

Notes:

Do not scale off drawing!
 Work only to noted dimensions

Check all dimensions on
 site prior to commencement

Notify the architect
 immediately of any discrepancy

Project:
147 Kentish Town Road

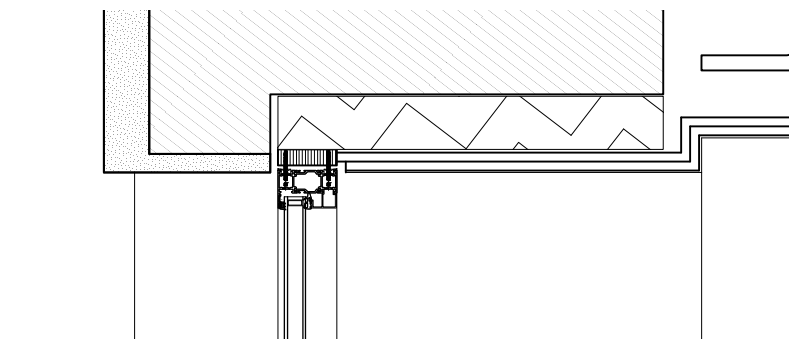
Drawing Title:
**Castle Road Elevation
 Bay Study 4:
 3rd floor sliding door**

Drawing No.:	1509_1214	Revision:	-
Scale@A1:	N/A	Scale@A3:	N/A
Scale@A3:	N/A	Rev. Date:	-
Drawn:	RP	First Drawn:	12.12.15
Checked:	RP	Checked:	RP

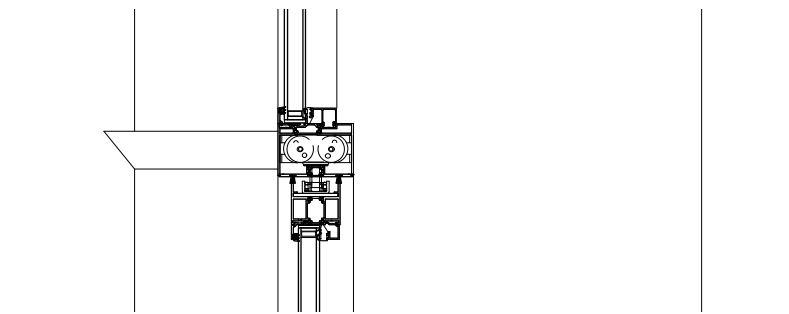
ROMAN PARDON
 ARCHITECTURE & DESIGN



elevation 1:20



2. head detail 1:10



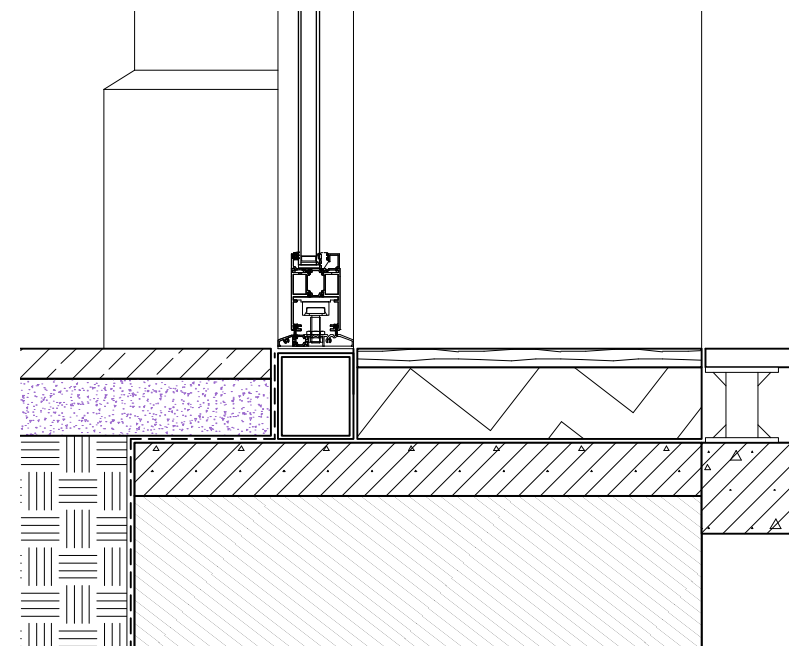
DETAILS

Wall finish: new stucco render
 Ornamentation: existing, repaired where necessary, as set out in the Facade Protection Plan.

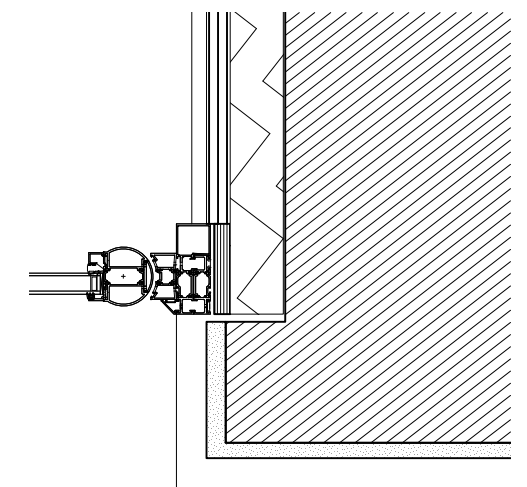
Reveal: half brick deep, finished in stucco render.

Clerestory window:
 ppc aluminium window system
 Comar 9P.i or similar approved.
 White finish.
 (Incorporating thermally broken sections with double glazing).

Doors:
 ppc aluminium door system
 Comar C7P.i thermally broken doorsets or similar approved.
 White finish.



1. sill detail 1:10



3. jamb detail 1:10

Notes:

Do not scale off drawing!
 Work only to noted dimensions

Check all dimensions on site prior to commencement

Notify the architect immediately of any discrepancy

Project:

147 Kentish Town Road

Drawing Title:

Kentish Town Road Elevation
 Bay Study 1:
 Ground floor typical opening

Drawing No.:

1509_1221

Scale@A1:

N/A

Drawn:

RP

Scale@A3:

N/A

First Drawn:

-

Revision:

-

Rev. Date:

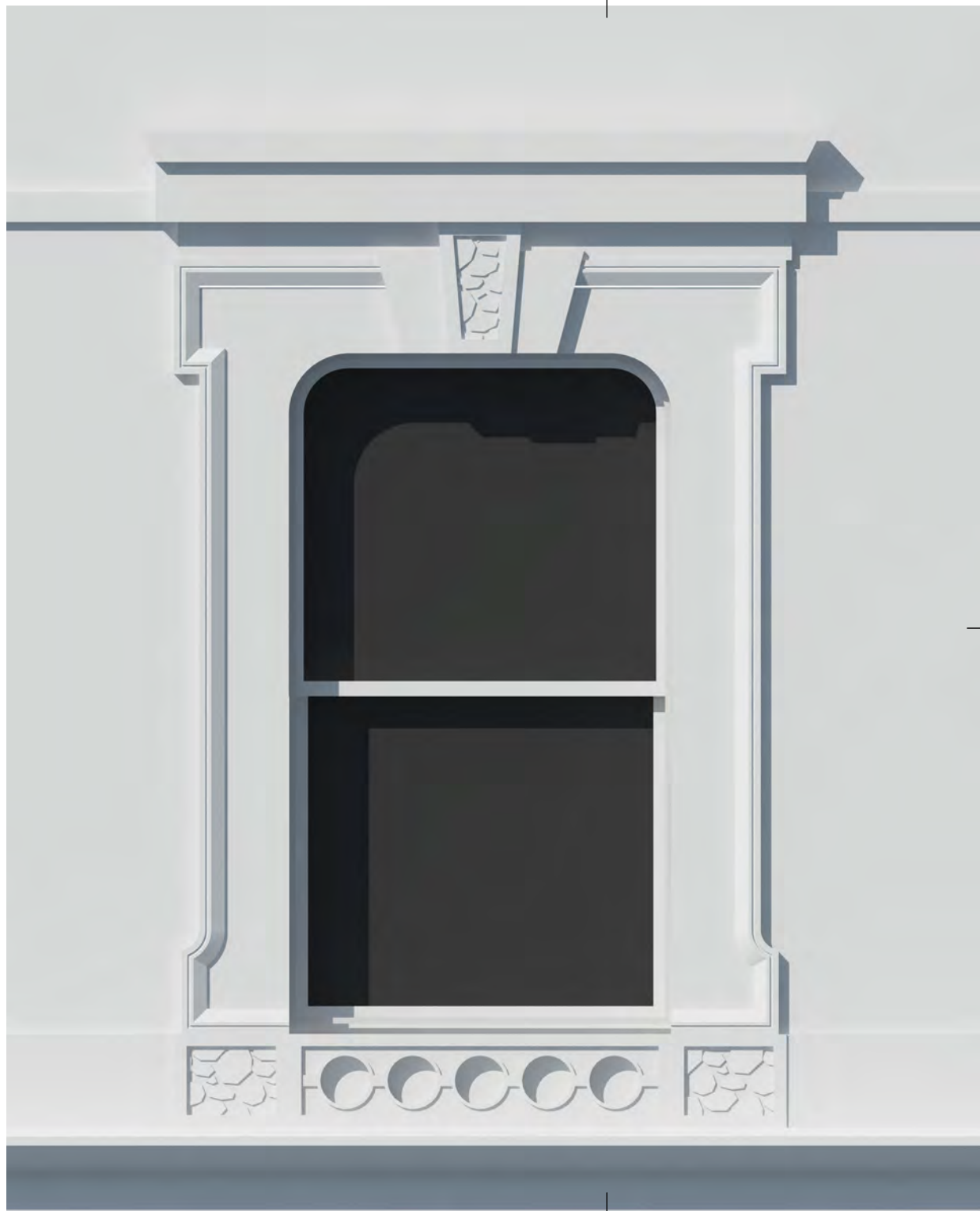
-

Checked:

RP

ROMAN PARDON
 ARCHITECTURE & DESIGN

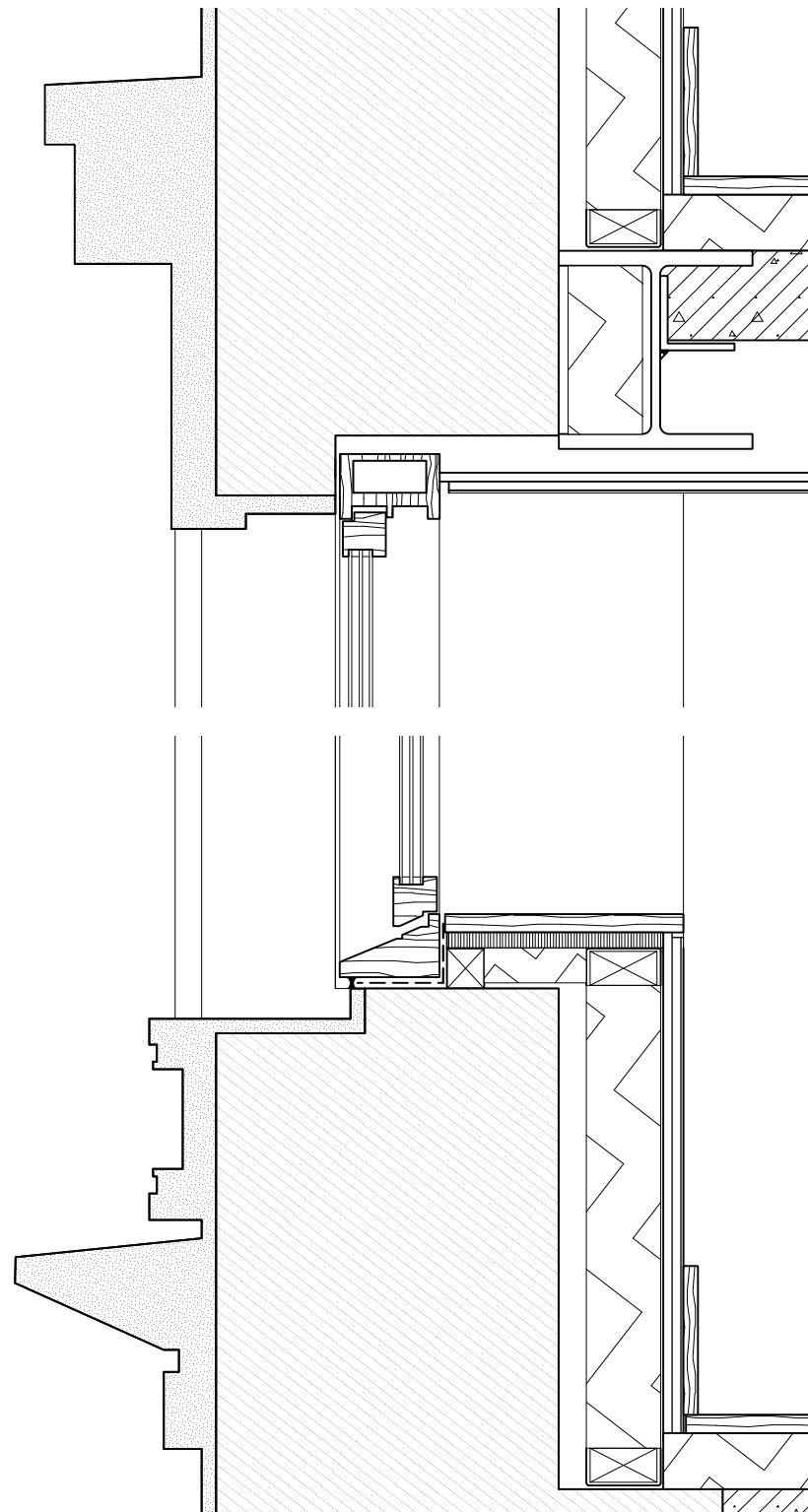
2



elevation 1:20

1

2. head detail 1:10



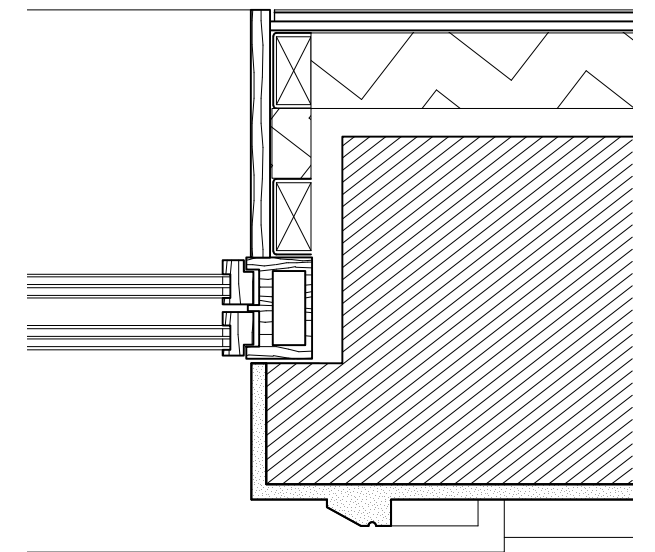
1. sill detail 1:10

DETAILS

Wall finish: new stucco render
 Ornamentation:
 DG Stone to install new features
 to repair existing, as set out in the
 Facade Protection Plan.

Reveal: half brick deep, finished in
 stucco render.

Window System:
 timber sash window by
 Chase Windows or similar approved.
 White painted finish.
 (Incorporating triple glazing).
 U Value: 1.3 W/m2.K



3. jamb detail 1:10

Notes:

Do not scale off drawing!
 Work only to noted dimensions

Check all dimensions on
 site prior to commencement

Notify the architect
 immediately of any discrepancy

Project:

147 Kentish Town Road

Drawing Title:

Kentish Town Road Elevation
 Bay Study 2:
 1st floor typical opening

Drawing No.:

1509_1222

Scale@A1:

N/A

Drawn:

RP

Scale@A3:

N/A

First Drawn:

-

Revision:

-

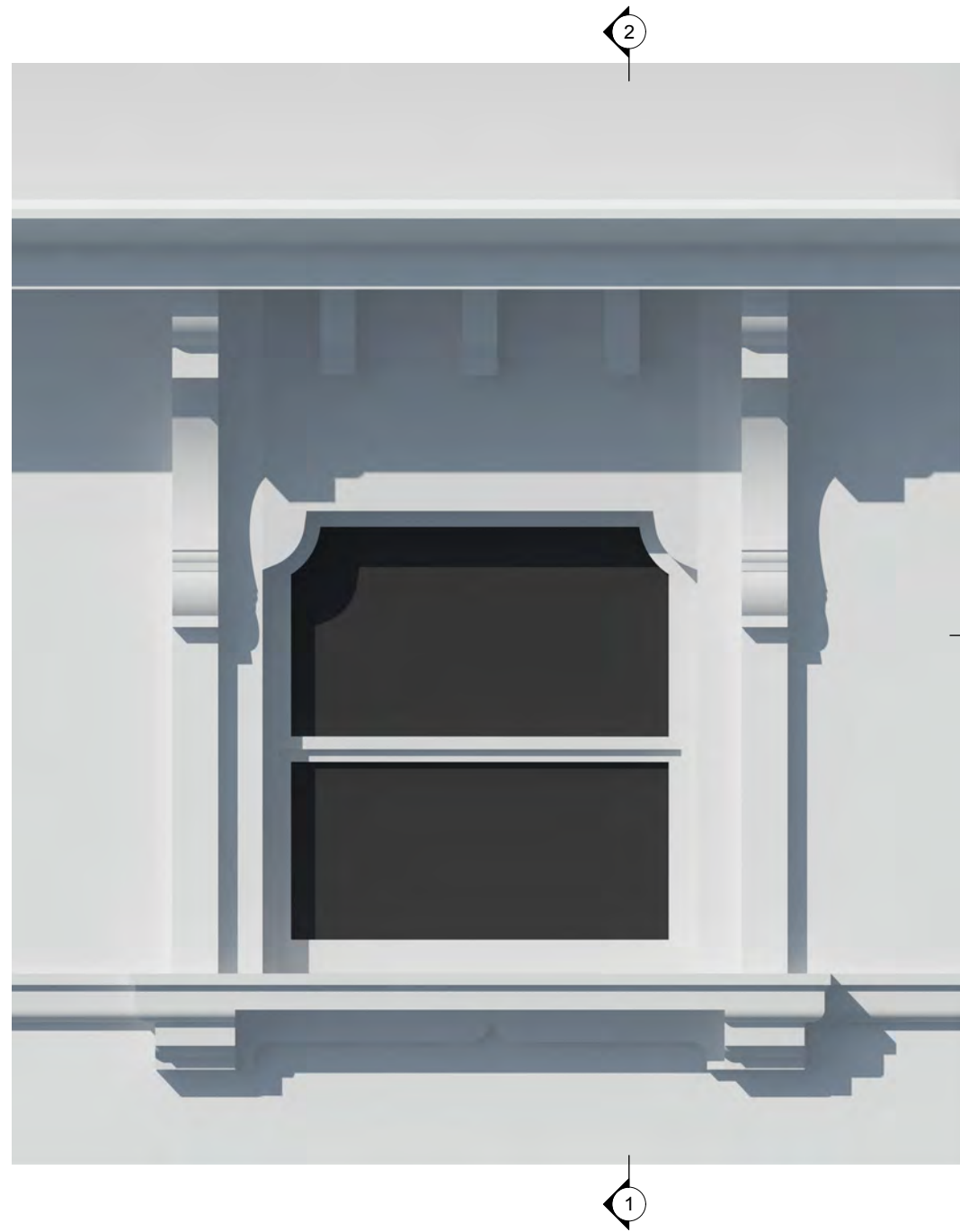
Rev. Date:

-

Checked:

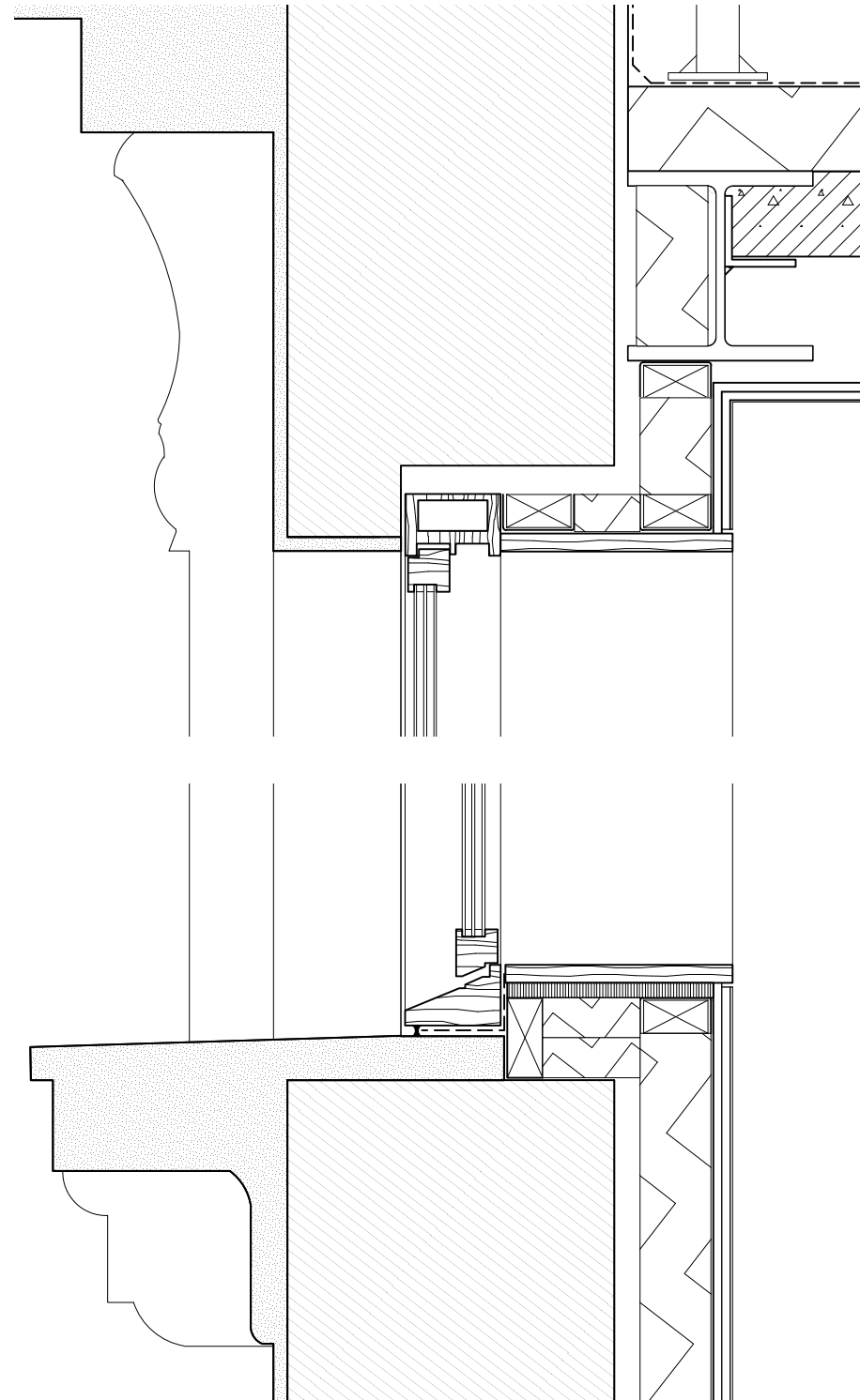
RP

ROMAN PARDON
 ARCHITECTURE & DESIGN



elevation 1:20

2. head detail 1:10



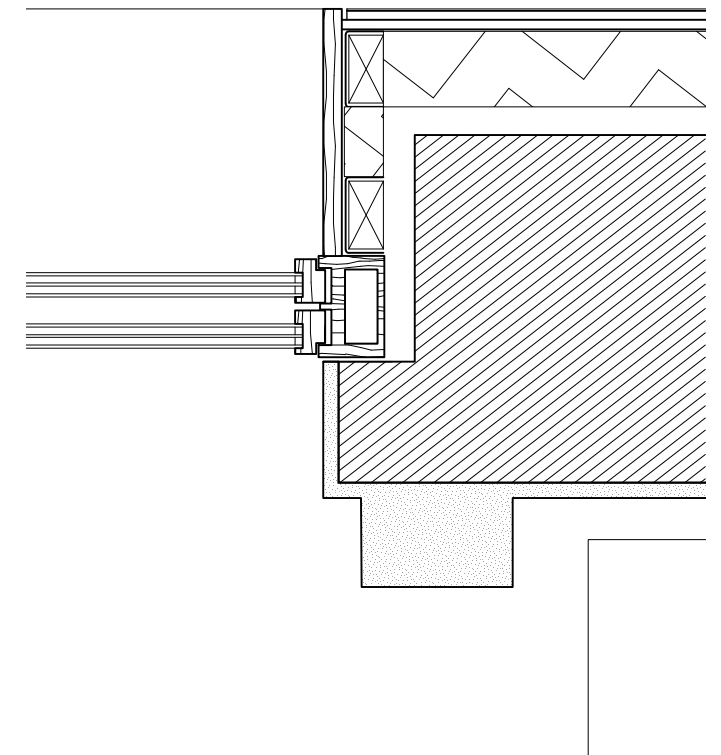
1. sill detail 1:10

DETAILS

Wall finish: new stucco render
 Ornamentation: existing, repaired where necessary, as set out in the Facade Protection Plan.

Reveal: half brick deep, finished in stucco render.

Window System:
 timber sash window by Chase Windows or similar approved.
 White painted finish.
 (Incorporating triple glazing).
 U Value: 1.3 W/m2.K



3. jamb detail 1:10

Notes:

Do not scale off drawing!
 Work only to noted dimensions

Check all dimensions on site prior to commencement

Notify the architect immediately of any discrepancy

Project:

147 Kentish Town Road

Drawing Title:

Kentish Town Road Elevation
 Bay Study 3:
 2nd floor typical opening

Drawing No.:

1509_1223

Scale@A1:

N/A

Drawn:

RP

Scale@A3:

N/A

First Drawn:

-

Revision:

-

Rev. Date:

-

Checked:

RP

ROMAN PARDON
 ARCHITECTURE & DESIGN