

- General Notes**
- Dimensions are in millimetres unless stated otherwise.
  - Levels are in metres AOD unless stated otherwise.
  - Dimensions govern. Do not scale off drawing.
  - All dimensions to be verified on site before proceeding.
  - All discrepancies to be notified in writing to Make Limited.

© Make Limited 2008

**Additional Notes**

- A. All landscaping & Bushes.
- B. All entrances and internal layouts are illustrative.
- C. All drawings should be viewed at A1.
- 1:500@A1 = 1:2500@A3
- 1:2500@A1 = 1:10000@A3
- 1:500@A1 = 1:1000@A3

These scales are approximate. Do not scale off drawings.

- Material specifications:**
- A. New full-faced brickwork
    - i. Type 1 (Charlotte Street)
    - ii. Type 2 (New Chitty Street deviation)
    - iii. Type 3 (Chitty Street residential)
    - iv. Type 4 (Whitefield Street residential)
    - v. Type 5 (New Whitefield Street extension)
    - vi. Type 6 (New 14 Charlotte Mews)
  - B. Metal glaze & opaque metal cladding panels
  - C. Sashback bays comprised of transparent glass windows with metal reveals & opaque metal cladding panels
  - D. Pushback bays comprised of transparent glass windows with metal reveals & opaque metal cladding panels
  - E. Metal cladders to roof plane
  - F. New full-faced brick screens wall with metallic channel
  - G. Perforated metal canopy (bracketed)
  - H. Glass balustrade with stainless steel channel
  - I. Cladding facade retained with improved replacement windows
  - J. New prefabricated concrete frame
  - K. Glass atrium with metal structure & ETFE roof
  - L. Metallic facade
  - M. New full-faced brickwork to match existing & new windows to match those below
  - N. Existing brickwork made good
  - O. Existing concrete made good
  - P. Existing stone paving, cleaned and made good
  - Q. Existing paving made good
  - R. New metal railings painted black to match existing
  - S. New metal roof over north courtyard
  - T. Terrace balcony
  - U. Transparent glass panels

Rev	Date	Reason For Issue	Chk
03	11.12.15	Section 73 Demolition	JM
02	26.11.14	Section 73	MT
01	23.10.13	Section 73	MT
00	09.12.10	Planning For Issue	MT
			Chk

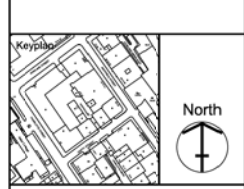
**make**

55-65 Whitefield Street,  
London, W1T 4HE

tel +44 (0) 20 7636 5151  
fax +44 (0) 20 7636 5252  
info@makearchitects.com  
www.makearchitects.com

**Client**

West London & Suburban  
Property Investments Limited



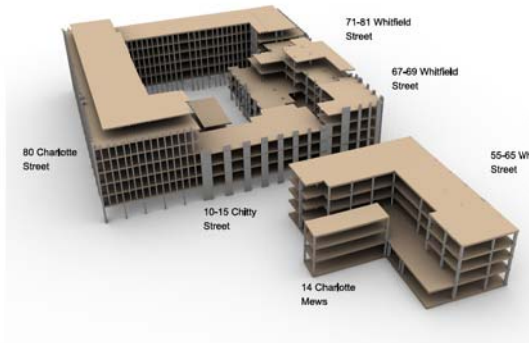
**Project**

80 Charlotte Street &  
65 Whitefield Street

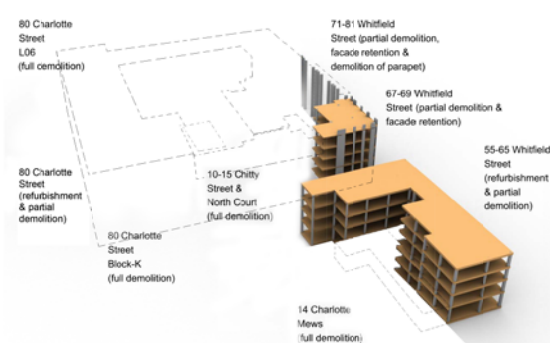
**Drawing Title**

Existing demolition overview

Scale	Paper Size	Date
1:500	@A1	09.12.10
Project No.	Draw No.	Rev No.
0355	P1000	03

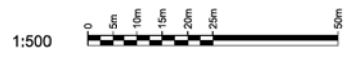


Existing structures (Illustrative)



Demolition (Illustrative)

- Boundary line
- Charlotte Street Conservation area
- Demolition within Charlotte Street Conservation Area
- Substantial demolition outside Conservation Area
- Area excluded from Planning Application



1:500



HOWLAND STREET

Charlotte Street Conservation Area

WHITFIELD STREET

CHITTY STREET

CHARLOTTE MEWS

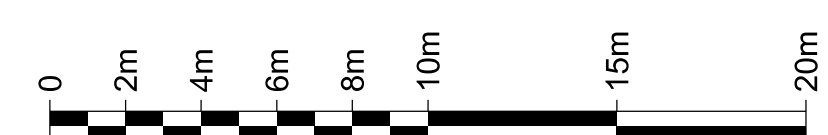
Charlotte Street Conservation Area

CHARLOTTE STREET

Refer to structural engineers drawings for 3nr installed piles to support new cladding

- Demolition within Charlotte Street Conservation Area
- Demolition outside Conservation Area
- Area excluded from Planning Application

1:200



**General Notes**

- Dimensions are in millimetres unless stated otherwise.
- Levels are in metres AOD unless stated otherwise.
- Dimensions govern. Do not scale off drawing.
- All dimensions to be verified on site before proceeding.
- All discrepancies to be notified in writing to Make Limited.

© Make Limited 2008

**Additional Notes**

- All landscaping is illustrative.
- All entrances and internal layouts are illustrative.
- All drawings should be viewed at A1.  
1:1250@A1 = 1:2500@A3  
1:500@A1 = 1:1000@A3  
1:200@A1 = 1:400@A3  
1:50@A1 = 1:100@A3  
These scales are approximate. Do not scale off drawings.

- Material descriptions:**
- A New fair-faced brickwork
    - i Type 1 (Charlotte Street)
    - ii Type 2 (New Chitty Street elevation)
    - iii Type 3 (Chitty Street residential)
    - iv Type 4 (Whitfield Street residential)
    - v Type 5 (New Whitfield Street extension)
    - vi Type 6 (New 14 Charlotte Mews)
  - B Mix of glass & opaque metal cladding panels
  - C Set-back bays comprised of transparent glass windows with metal reveals & opaque metal cladding panels
  - D Pushed-out bays comprised of transparent glass windows with metal reveals & opaque metal cladding panels
  - E Metal-louvers to roof plant
  - F New fair-faced brick screen wall with metallic channel
  - G Perforated metal canopy (brise-soleil)
  - H Glass balustrade with stainless steel channel
  - I Existing facade retained with improved replacement windows.
  - J New prefabricated concrete frame
  - K Glass atrium with metal structure & ETFE roof
  - L Metallic fascia
  - M New fair-faced brickwork to match existing & new windows to match those below
  - N Existing brickwork made good
  - O Existing concrete sills cleaned and made good
  - P Existing stone panelling cleaned and made good
  - Q Existing railings retained
  - R New metal railings painted black to match existing
  - S Green/ brown roof
  - T Terrace/ balcony
  - U Transparent glass panels

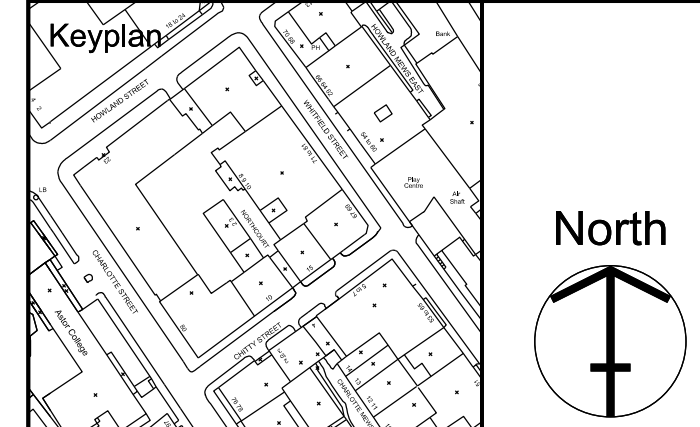
06	11.12.15	Section 73 Demolition	JM
05	24/09/13	Section 73	MT
04	19/08/13	Certificate of Lawfulness	MT
03	19/08/13	Section 96A	MT
02	29/07/13	Section 96A	MT
01	18.03.11	Planning Addendum	MT
00	09.12.10	Planning Application	MT
Rev	Date	Reason For Issue	Chk

**make**

55-65 Whitfield Street,  
London, W1T 4HE

tel +44 (0) 20 7636 5151  
fax +44 (0) 20 7636 5252  
info@makearchitects.com  
www.makearchitects.com

Client  
**West London & Suburban  
Property Investments Limited**



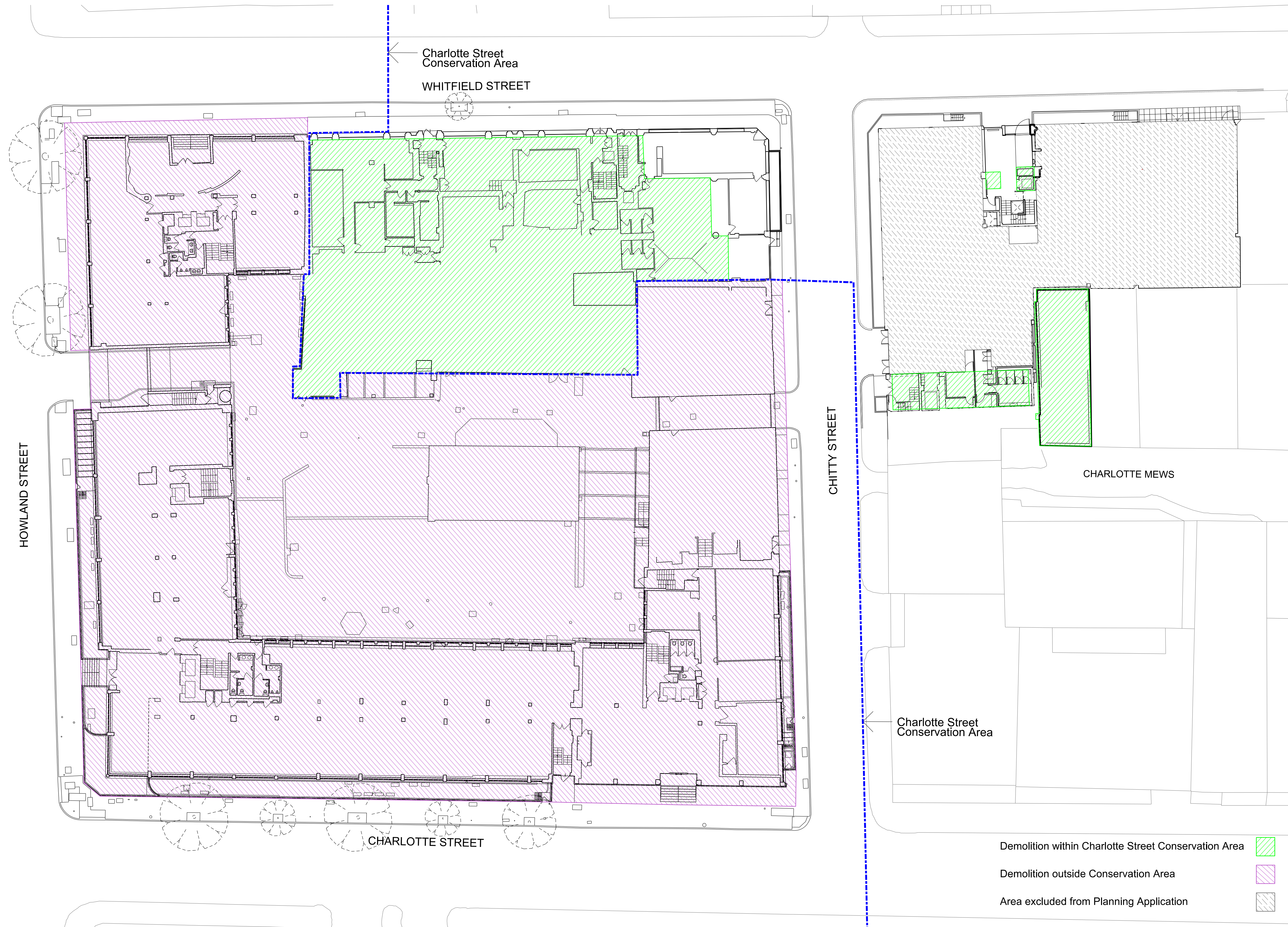
Project  
**80 Charlotte Street &  
65 Whitfield Street**

Drawing Title  
**Existing / Demolition:  
Lower ground floor plan**

Scale Paper Size Date  
1:200 @A1 09.12.10

Project No. Draw No. Rev No.  
**0355 P1099 06**





- General Notes**
1. Dimensions are in millimetres unless stated otherwise.
  2. Levels are in metres AOD unless stated otherwise.
  3. Dimensions govern. Do not scale off drawing.
  4. All dimensions to be verified on site before proceeding.
  5. All discrepancies to be notified in writing to Make Limited.

© Make Limited 2008

**Additional Notes**

- A. All landscaping is illustrative.
- B. All entrances and internal layouts are illustrative.
- C. All drawings should be viewed at A1.  
1:1250@A1 = 1:2500@A3  
1:500@A1 = 1:1000@A3  
1:200@A1 = 1:400@A3  
1:50@A1 = 1:100@A3  
These scales are approximate. Do not scale off drawings.

- Material descriptions:**
- A New fair-faced brickwork
    - i Type 1 (Charlotte Street)
    - ii Type 2 (New Chitty Street elevation)
    - iii Type 3 (Chitty Street residential)
    - iv Type 4 (Whitfield Street residential)
    - v Type 5 (New Whitfield Street extension)
    - vi Type 6 (New 14 Charlotte Mews)
  - B Mix of glass & opaque metal cladding panels
  - C Set-back bays comprised of transparent glass windows with metal reveals & opaque metal cladding panels
  - D Pushed-out bays comprised of transparent glass windows with metal reveals & opaque metal cladding panels
  - E Metal-louvers to roof plant
  - F New fair-faced brick screen wall with metallic channel
  - G Perforated metal canopy (brise-soleil)
  - H Glass balustrade with stainless steel channel
  - I Existing facade retained with improved replacement windows.
  - J New prefabricated concrete frame
  - K Glass atrium with metal structure & ETFE roof
  - L Metallic fascia
  - M New fair-faced brickwork to match existing & new windows to match those below
  - N Existing brickwork made good
  - O Existing concrete sills cleaned and made good
  - P Existing stone panelling cleaned and made good
  - Q Existing railings retained
  - R New metal railings painted black to match existing
  - S Green/ brown roof
  - T Terrace/ balcony
  - U Transparent glass panels

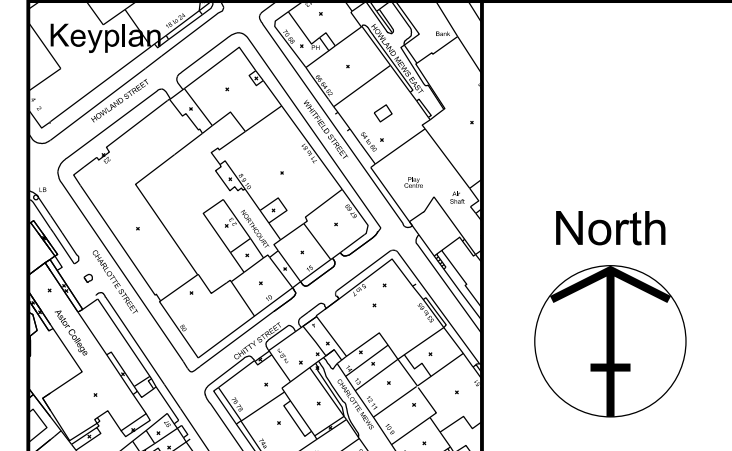
Rev	Date	Reason For Issue	Chk
05	11/12/15	Section 73 Demolition	JM
04	24/09/13	Section 73	MT
03	19/08/13	Section 96A	MT
02	29/07/13	Section 96A	MT
01	18.03.11	Planning Addendum	MT
00	09.12.10	Planning Application	MT

**make**

55-65 Whitfield Street,  
London, W1T 4HE

tel +44 (0) 20 7636 5151  
fax +44 (0) 20 7636 5252  
info@makearchitects.com  
www.makearchitects.com

Client  
**West London & Suburban  
Property Investments Limited**



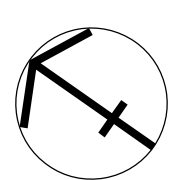
Project  
**80 Charlotte Street &  
65 Whitfield Street**

Drawing Title  
**Existing/ demolition:  
Ground floor plan**

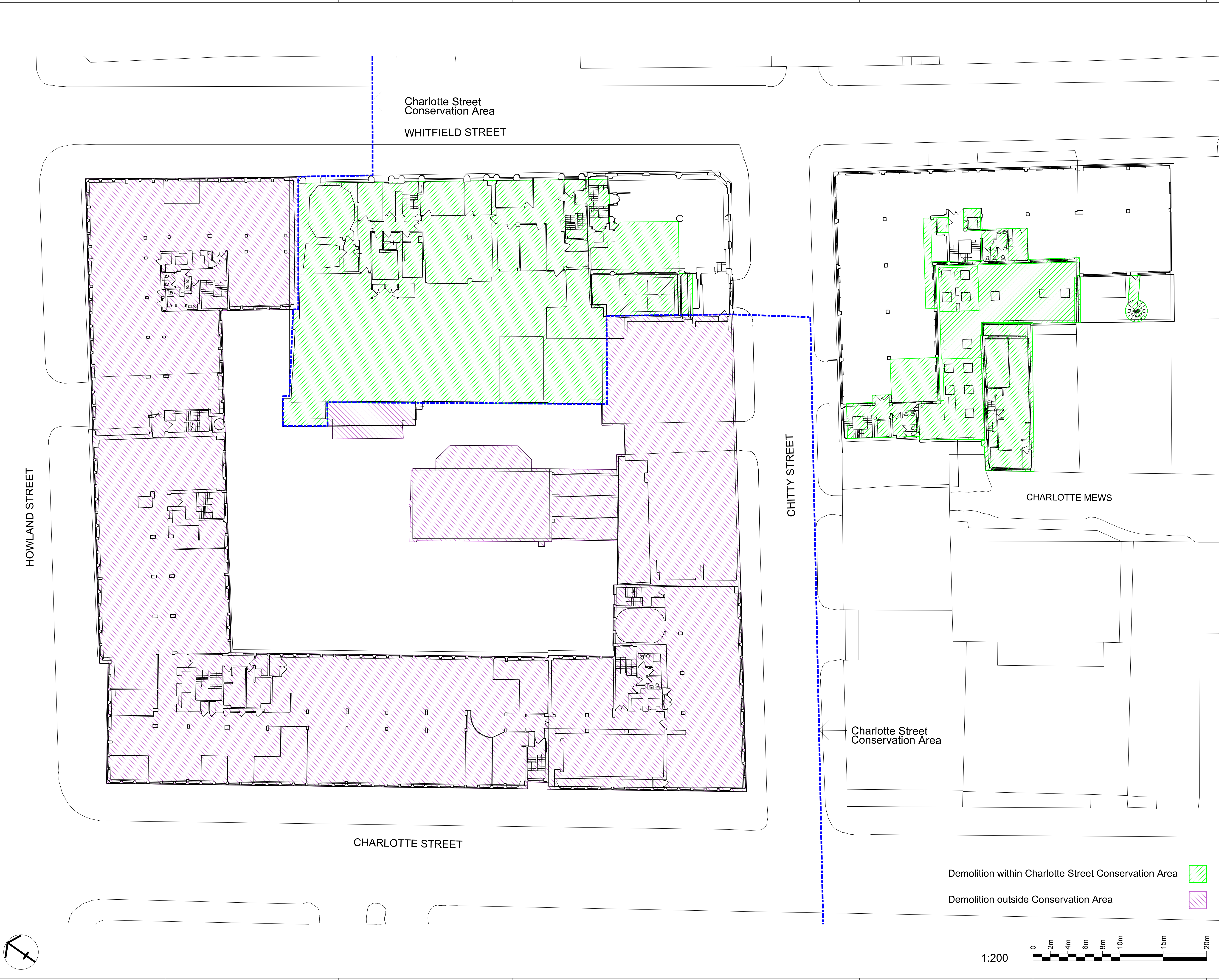
Scale 1: 200    Paper Size @A1    Date 09.12.10

Project No. 0355    Draw No. P1100    Rev No. 05

- Demolition within Charlotte Street Conservation Area
- Demolition outside Conservation Area
- Area excluded from Planning Application







**General Notes**

- Dimensions are in millimetres unless stated otherwise.
- Levels are in metres AOD unless stated otherwise.
- Dimensions govern. Do not scale off drawing.
- All dimensions to be verified on site before proceeding.
- All discrepancies to be notified in writing to Make Limited.

© Make Limited 2008

**Additional Notes**

- All landscaping is illustrative.
- All entrances and internal layouts are illustrative.
- All drawings should be viewed at A1.  
 1:1250@A1 = 1:2500@A3  
 1:500@A1 = 1:1000@A3  
 1:200@A1 = 1:400@A3  
 1:50@A1 = 1:100@A3  
 These scales are approximate. Do not scale off drawings.

- Material descriptions:**
- A New fair-faced brickwork
    - i Type 1 (Charlotte Street)
    - ii Type 2 (New Chitty Street elevation)
    - iii Type 3 (Chitty Street residential)
    - iv Type 4 (Whitfield Street residential)
    - v Type 5 (New Whitfield Street extension)
    - vi Type 6 (New 14 Charlotte Mews)
  - B Mix of glass & opaque metal cladding panels
  - C Set-back bays comprised of transparent glass windows with metal reveals & opaque metal cladding panels
  - D Pushed-out bays comprised of transparent glass windows with metal reveals & opaque metal cladding panels
  - E Metal-louvers to roof plant
  - F New fair-faced brick screen wall with metallic channel
  - G Perforated metal canopy (brise-soleil)
  - H Glass balustrade with stainless steel channel
  - I Existing facade retained with improved replacement windows.
  - J New prefabricated concrete frame
  - K Glass atrium with metal structure & ETFE roof
  - L Metallic fascia
  - M New fair-faced brickwork to match existing & new windows to match those below
  - N Existing brickwork made good
  - O Existing concrete sills cleaned and made good
  - P Existing stone panelling cleaned and made good
  - Q Existing railings retained
  - R New metal railings painted black to match existing
  - S Green/ brown roof
  - T Terrace/ balcony
  - U Transparent glass panels

05	11/12/15	Section 73 Demolition	JM
04	24/09/13	Section 73	MT
03	19/08/13	Section 96A	MT
02	29/07/13	Section 96A	MT
01	18.03.11	Planning Addendum	MT
00	09.12.10	Planning Application	MT
Rev	Date	Reason For Issue	Chk

**make**

55-65 Whitfield Street,  
London, W1T 4HE

tel +44 (0) 20 7636 5151  
 fax +44 (0) 20 7636 5252  
 info@makearchitects.com  
 www.makearchitects.com

Client  
**West London & Suburban  
 Property Investments Limited**



Project  
**80 Charlotte Street &  
 65 Whitfield Street**

Drawing Title  
**Existing / Demolition:  
 Level 01 floor plan**

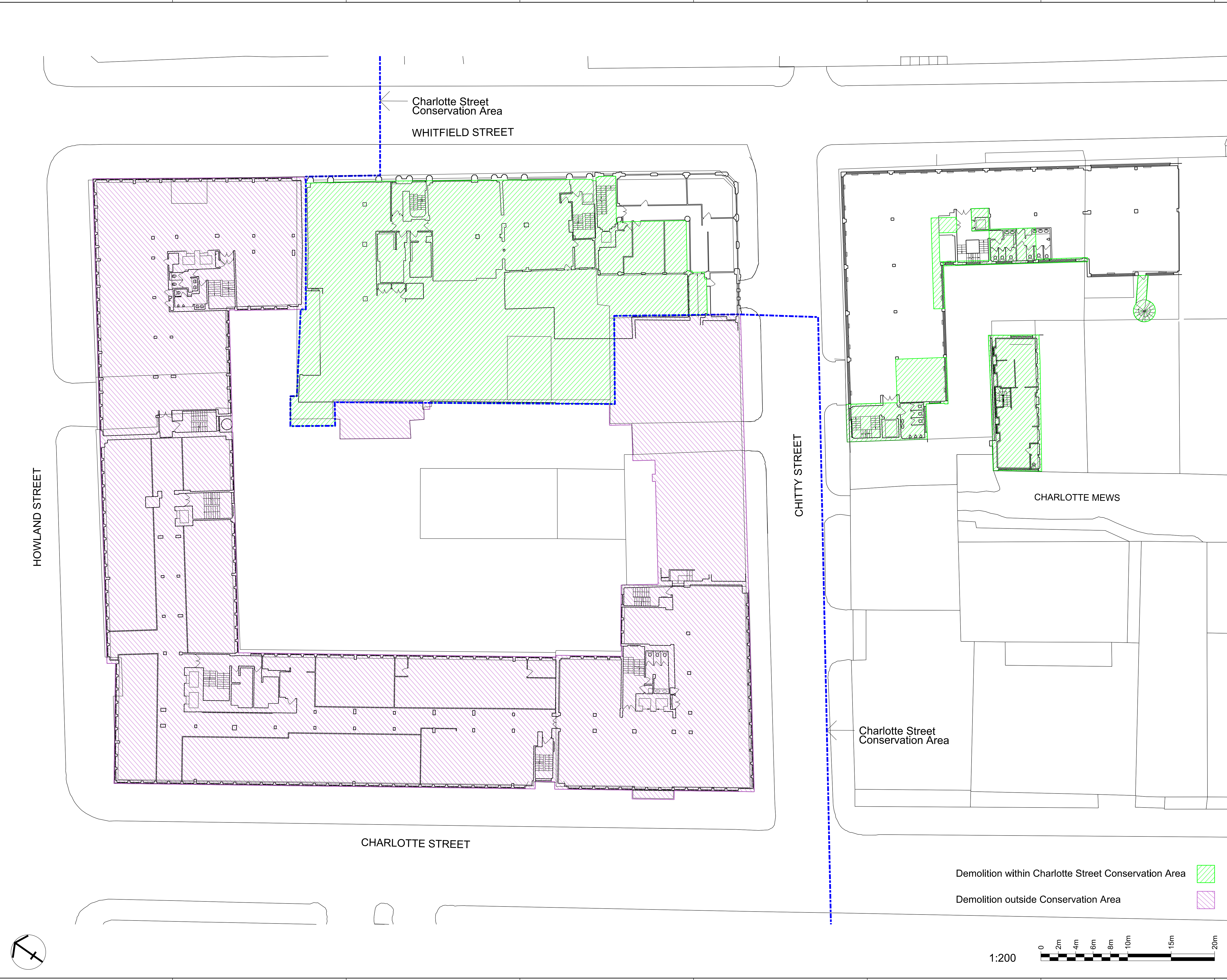
Demolition within Charlotte Street Conservation Area   
 Demolition outside Conservation Area

Scale	Paper Size	Date
1:200	@A1	09.12.10

Project No.	Draw No.	Rev No.
<b>0355</b>	<b>P1101</b>	<b>05</b>







**General Notes**

1. Dimensions are in millimetres unless stated otherwise.
2. Levels are in metres AOD unless stated otherwise.
3. Dimensions govern. Do not scale off drawing.
4. All dimensions to be verified on site before proceeding.
5. All discrepancies to be notified in writing to Make Limited.

© Make Limited 2008

**Additional Notes**

- A. All landscaping is illustrative.
- B. All entrances and internal layouts are illustrative.
- C. All drawings should be viewed at A1.  
1:1250@A1 = 1:2500@A3  
1:500@A1 = 1:1000@A3  
1:200@A1 = 1:400@A3  
1:50@A1 = 1:100@A3  
These scales are approximate. Do not scale off drawings.

**Material descriptions:**

- A. New fair-faced brickwork
  - i. Type 1 (Charlotte Street)
  - ii. Type 2 (New Chitty Street elevation)
  - iii. Type 3 (Chitty Street residential)
  - iv. Type 4 (Whitfield Street residential)
  - v. Type 5 (New Whitfield Street extension)
  - vi. Type 6 (New 14 Charlotte Mews)
- B. Mix of glass & opaque metal cladding panels
- C. Set-back bays comprised of transparent glass windows with metal reveals & opaque metal cladding panels
- D. Pushed-out bays comprised of transparent glass windows with metal reveals & opaque metal cladding panels
- E. Metal-louvers to roof plant
- F. New fair-faced brick screen wall with metallic channel
- G. Perforated metal canopy (brise-soleil)
- H. Glass balustrade with stainless steel channel
- I. Existing facade retained with improved replacement windows.
- J. New prefabricated concrete frame
- K. Glass atrium with metal structure & ETFE roof
- L. Metallic fascia
- M. New fair-faced brickwork to match existing & new windows to match those below
- N. Existing brickwork made good
- O. Existing concrete sills cleaned and made good
- P. Existing stone panelling cleaned and made good
- Q. Existing railings retained
- R. New metal railings painted black to match existing
- S. Green/ brown roof
- T. Terrace/ balcony
- U. Transparent glass panels

Rev	Date	Reason For Issue	Chk
05	11/12/15	Section 73 Demolition	JM
04	24/09/13	Section 73	MT
03	19/08/13	Section 96A	MT
02	29/07/13	Section 96A	MT
01	18.03.11	Planning Addendum	MT
00	09.12.10	Planning Application	MT

**make**

55-65 Whitfield Street,  
London, W1T 4HE

tel +44 (0) 20 7636 5151  
fax +44 (0) 20 7636 5252  
info@makearchitects.com  
www.makearchitects.com

Client  
**West London & Suburban  
Property Investments Limited**



Project  
**80 Charlotte Street &  
65 Whitfield Street**

Drawing Title  
**Existing / Demolition:  
Level 02 floor plan**

Demolition within Charlotte Street Conservation Area

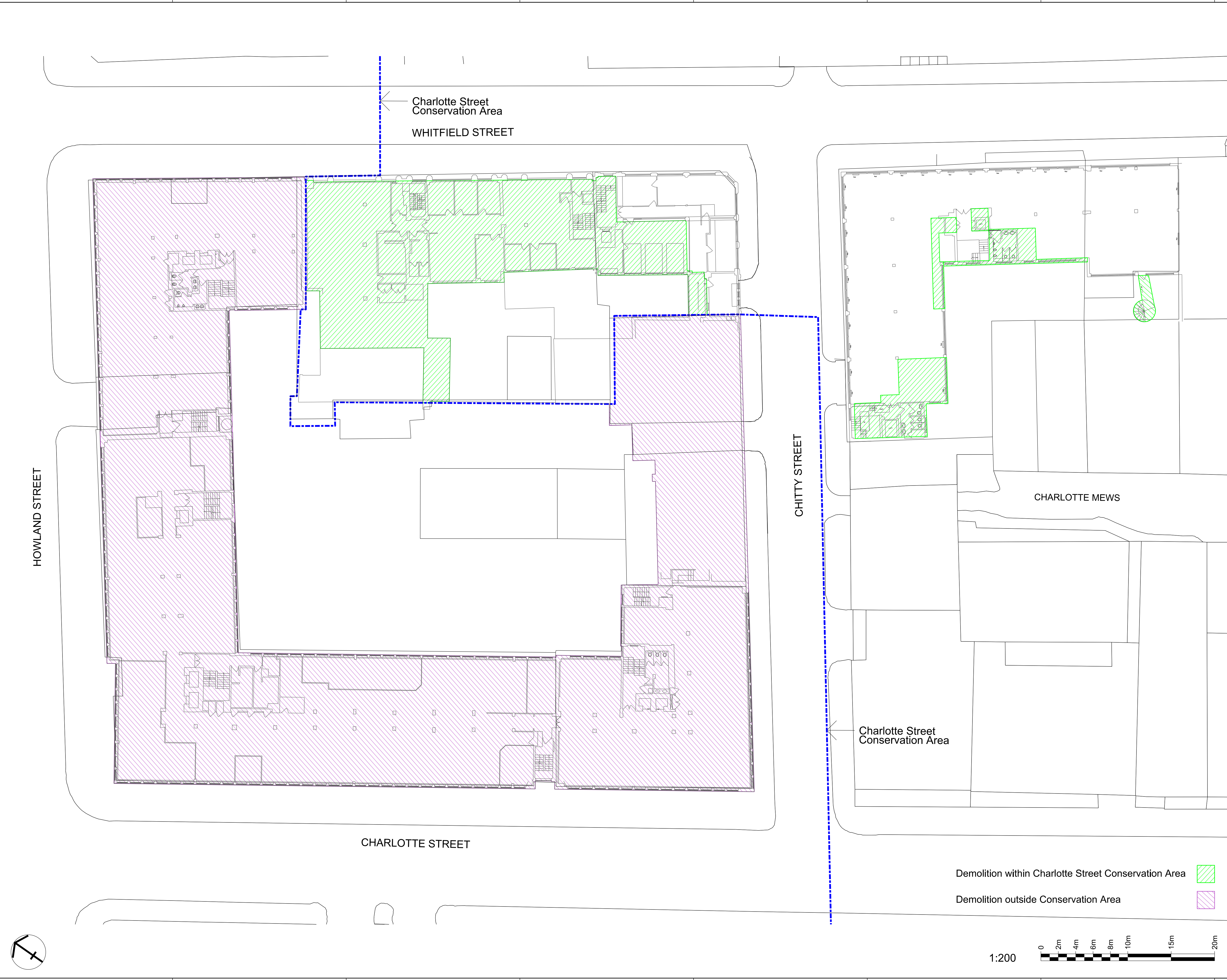
Demolition outside Conservation Area

Scale	Paper Size	Date
1:200	@A1	09.12.10

Project No.	Draw No.	Rev No.
<b>0355</b>	<b>P1102</b>	<b>05</b>







**General Notes**

- Dimensions are in millimetres unless stated otherwise.
- Levels are in metres AOD unless stated otherwise.
- Dimensions govern. Do not scale off drawing.
- All dimensions to be verified on site before proceeding.
- All discrepancies to be notified in writing to Make Limited.

© Make Limited 2008

**Additional Notes**

- All landscaping is illustrative.
- All entrances and internal layouts are illustrative.
- All drawings should be viewed at A1.  
 1:1250@A1 = 1:2500@A3  
 1:500@A1 = 1:1000@A3  
 1:200@A1 = 1:400@A3  
 1:50@A1 = 1:100@A3  
 These scales are approximate. Do not scale off drawings.

**Material descriptions:**

- A New fair-faced brickwork
  - i Type 1 (Charlotte Street)
  - ii Type 2 (New Chitty Street elevation)
  - iii Type 3 (Chitty Street residential)
  - iv Type 4 (Whitfield Street residential)
  - v Type 5 (New Whitfield Street extension)
  - vi Type 6 (New 14 Charlotte Mews)
- B Mix of glass & opaque metal cladding panels
- C Set-back bays comprised of transparent glass windows with metal reveals & opaque metal cladding panels
- D Pushed-out bays comprised of transparent glass windows with metal reveals & opaque metal cladding panels
- E Metal-louvers to roof plant
- F New fair-faced brick screen wall with metallic channel
- G Perforated metal canopy (brise-soleil)
- H Glass balustrade with stainless steel channel
- I Existing facade retained with improved replacement windows.
- J New prefabricated concrete frame
- K Glass atrium with metal structure & ETFE roof
- L Metallic fascia
- M New fair-faced brickwork to match existing & new windows to match those below
- N Existing brickwork made good
- O Existing concrete sills cleaned and made good
- P Existing stone panelling cleaned and made good
- Q Existing railings retained
- R New metal railings painted black to match existing
- S Green/ brown roof
- T Terrace/ balcony
- U Transparent glass panels

05	11/12/15	Section 73 Demolition	JM
04	24/09/13	Section 73	MT
03	19/08/13	Section 96A	MT
02	29/07/13	Section 96A	MT
01	18.03.11	Planning Addendum	MT
00	09.12.10	Planning Application	MT
Rev	Date	Reason For Issue	Chk

**make**

55-65 Whitfield Street,  
London, W1T 4HE

tel +44 (0) 20 7636 5151  
 fax +44 (0) 20 7636 5252  
 info@makearchitects.com  
 www.makearchitects.com

Client  
**West London & Suburban  
 Property Investments Limited**



Project  
**80 Charlotte Street &  
 65 Whitfield Street**

Drawing Title  
**Existing / Demolition:  
 Level 03 floor plan**

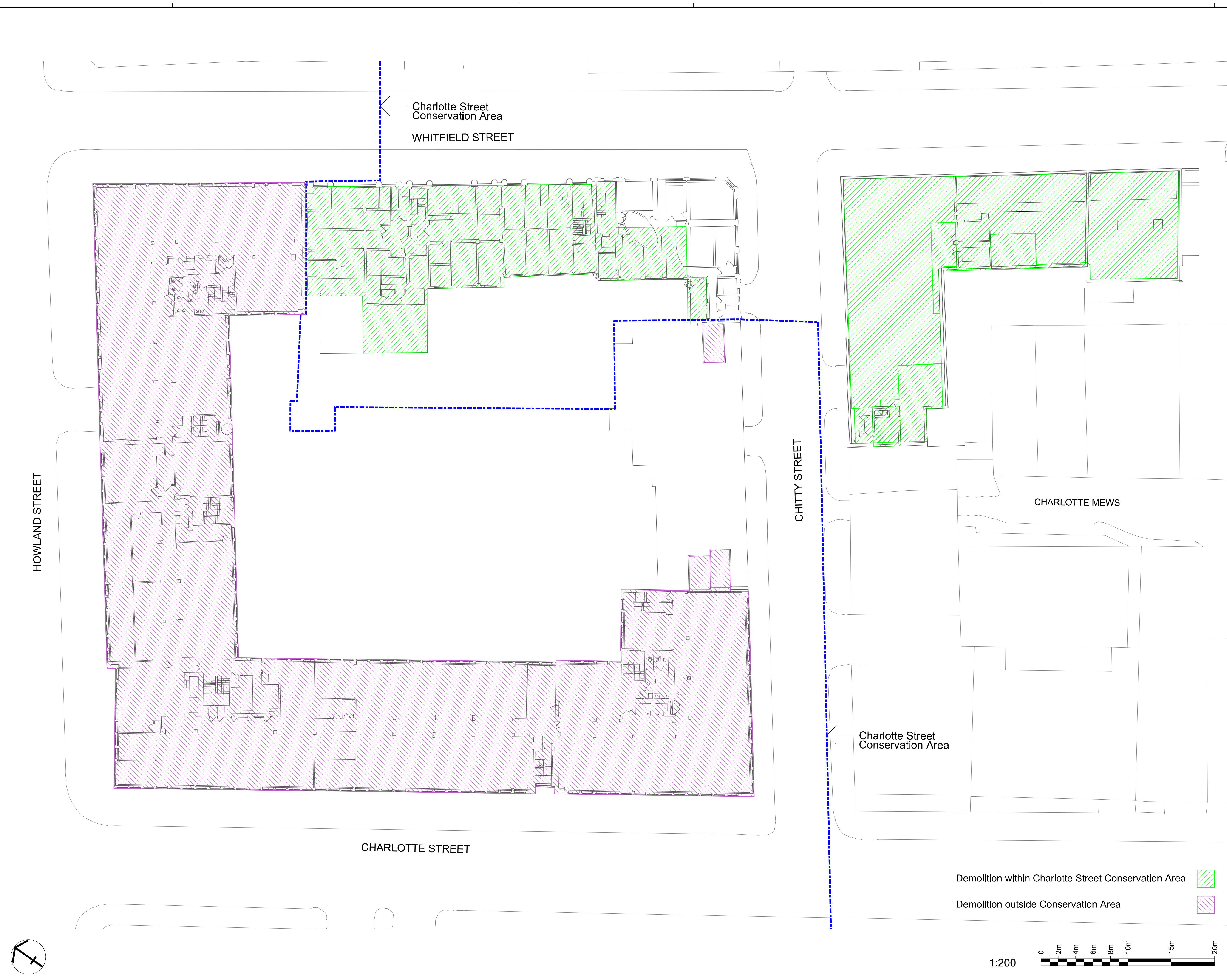
Scale	Paper Size	Date
1:200	@A1	09.12.10
Project No.	Draw No.	Rev No.
<b>0355</b>	<b>P1103</b>	<b>05</b>

Demolition within Charlotte Street Conservation Area

Demolition outside Conservation Area







- General Notes**
1. Dimensions are in millimetres unless stated otherwise.
  2. Levels are in metres AOD unless stated otherwise.
  3. Dimensions govern. Do not scale off drawing.
  4. All dimensions to be verified on site before proceeding.
  5. All discrepancies to be notified in writing to Make Limited.

© Make Limited 2008

**Additional Notes**

- A. All landscaping is illustrative.
- B. All entrances and internal layouts are illustrative.
- C. All drawings should be viewed at A1.  
 1:1250@A1 = 1:2500@A3  
 1:500@A1 = 1:1000@A3  
 1:200@A1 = 1:400@A3  
 1:50@A1 = 1:100@A3  
 These scales are approximate. Do not scale off drawings.

- Material descriptions:**
- A New fair-faced brickwork
    - i Type 1 (Charlotte Street)
    - ii Type 2 (New Chitty Street elevation)
    - iii Type 3 (Chitty Street residential)
    - iv Type 4 (Whitfield Street residential)
    - v Type 5 (New Whitfield Street extension)
    - vi Type 6 (New 14 Charlotte Mews)
  - B Mix of glass & opaque metal cladding panels
  - C Set-back bays comprised of transparent glass windows with metal reveals & opaque metal cladding panels
  - D Pushed-out bays comprised of transparent glass windows with metal reveals & opaque metal cladding panels
  - E Metal-louvers to roof plant
  - F New fair-faced brick screen wall with metallic channel
  - G Perforated metal canopy (brise-soleil)
  - H Glass balustrade with stainless steel channel
  - I Existing facade retained with improved replacement windows.
  - J New prefabricated concrete frame
  - K Glass atrium with metal structure & ETFE roof
  - L Metallic fascia
  - M New fair-faced brickwork to match existing & new windows to match those below
  - N Existing brickwork made good
  - O Existing concrete sills cleaned and made good
  - P Existing stone panelling cleaned and made good
  - Q Existing railings retained
  - R New metal railings painted black to match existing
  - S Green/ brown roof
  - T Terrace/ balcony
  - U Transparent glass panels

06	11/12/15	Section 73 Demolition	JM
05	26/11/14	Section 73	MT
04	24/09/13	Section 73	MT
03	19/08/13	Section 96A	MT
02	29/07/13	Section 96A	MT
01	18.03.11	Planning Addendum	MT
00	09.12.10	Planning Application	MT
Rev	Date	Reason For Issue	Chk

**make**

55-65 Whitfield Street,  
London, W1T 4HE

tel +44 (0) 20 7636 5151  
 fax +44 (0) 20 7636 5252  
 info@makearchitects.com  
 www.makearchitects.com

Client  
**West London & Suburban  
 Property Investments Limited**



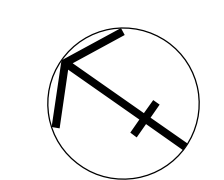
Project  
**80 Charlotte Street &  
 65 Whitfield Street**

Drawing Title  
**Existing / Demolition:  
 Level 04 floor plan**

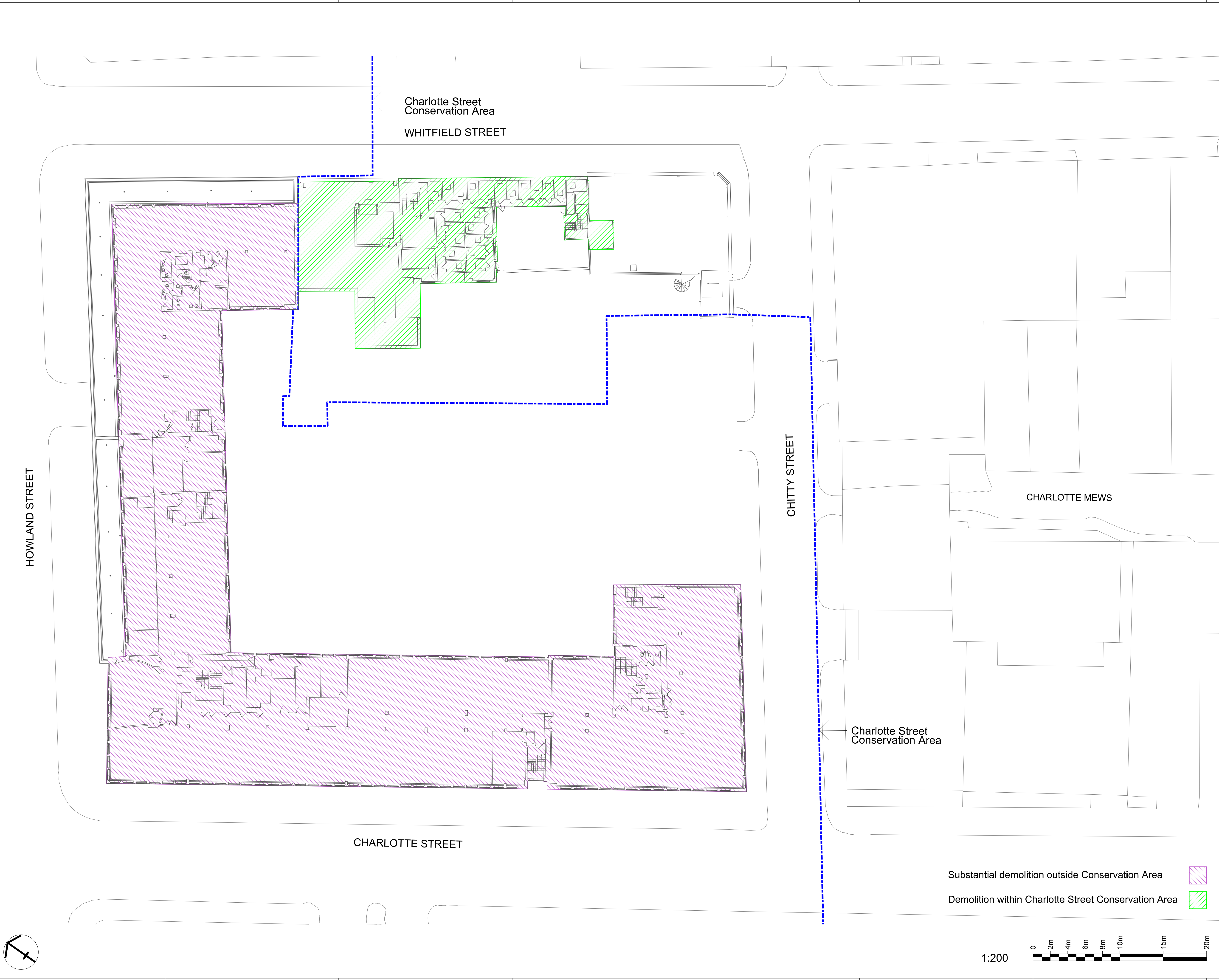
Scale	Paper Size	Date
1:200	@A1	09.12.10
Project No.	Draw No.	Rev No.
<b>0355</b>	<b>P1104</b>	<b>06</b>

Demolition within Charlotte Street Conservation Area

Demolition outside Conservation Area







- General Notes**
- Dimensions are in millimetres unless stated otherwise.
  - Levels are in metres AOD unless stated otherwise.
  - Dimensions govern. Do not scale off drawing.
  - All dimensions to be verified on site before proceeding.
  - All discrepancies to be notified in writing to Make Limited.

© Make Limited 2008

**Additional Notes**

- All landscaping is illustrative.
- All entrances and internal layouts are illustrative.
- All drawings should be viewed at A1.  
 1:1250@A1 = 1:2500@A3  
 1:500@A1 = 1:1000@A3  
 1:200@A1 = 1:400@A3  
 1:50@A1 = 1:100@A3  
 These scales are approximate. Do not scale off drawings.

- Material descriptions:**
- A New fair-faced brickwork
    - i Type 1 (Charlotte Street)
    - ii Type 2 (New Chitty Street elevation)
    - iii Type 3 (Chitty Street residential)
    - iv Type 4 (Whitfield Street residential)
    - v Type 5 (New Whitfield Street extension)
    - vi Type 6 (New 14 Charlotte Mews)
  - B Mix of glass & opaque metal cladding panels
  - C Set-back bays comprised of transparent glass windows with metal reveals & opaque metal cladding panels
  - D Pushed-out bays comprised of transparent glass windows with metal reveals & opaque metal cladding panels
  - E Metal-louvers to roof plant
  - F New fair-faced brick screen wall with metallic channel
  - G Perforated metal canopy (brise-soleil)
  - H Glass balustrade with stainless steel channel
  - I Existing facade retained with improved replacement windows.
  - J New prefabricated concrete frame
  - K Glass atrium with metal structure & ETFE roof
  - L Metallic fascia
  - M New fair-faced brickwork to match existing & new windows to match those below
  - N Existing brickwork made good
  - O Existing concrete sills cleaned and made good
  - P Existing stone panelling cleaned and made good
  - Q Existing railings retained
  - R New metal railings painted black to match existing
  - S Green/ brown roof
  - T Terrace/ balcony
  - U Transparent glass panels

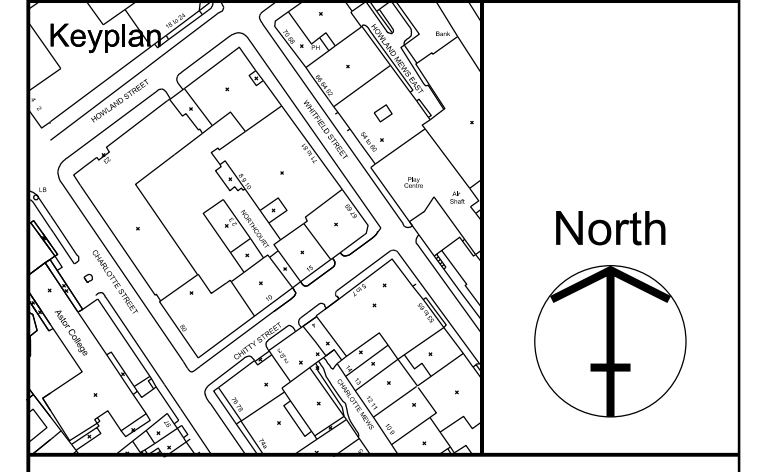
01	11/12/15	Section 73 Demolition	JM
00	24/09/13	Section 73	MT
Rev	Date	Reason For Issue	Chk

**make**

55-65 Whitfield Street,  
London, W1T 4HE

tel +44 (0) 20 7636 5151  
 fax +44 (0) 20 7636 5252  
 info@makearchitects.com  
 www.makearchitects.com

Client  
**West London & Suburban  
 Property Investments Limited**



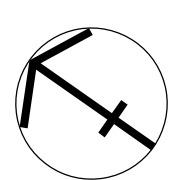
Project  
**80 Charlotte Street &  
 65 Whitfield Street**

Drawing Title  
**Existing / Demolition:  
 Level 05 floor plan**

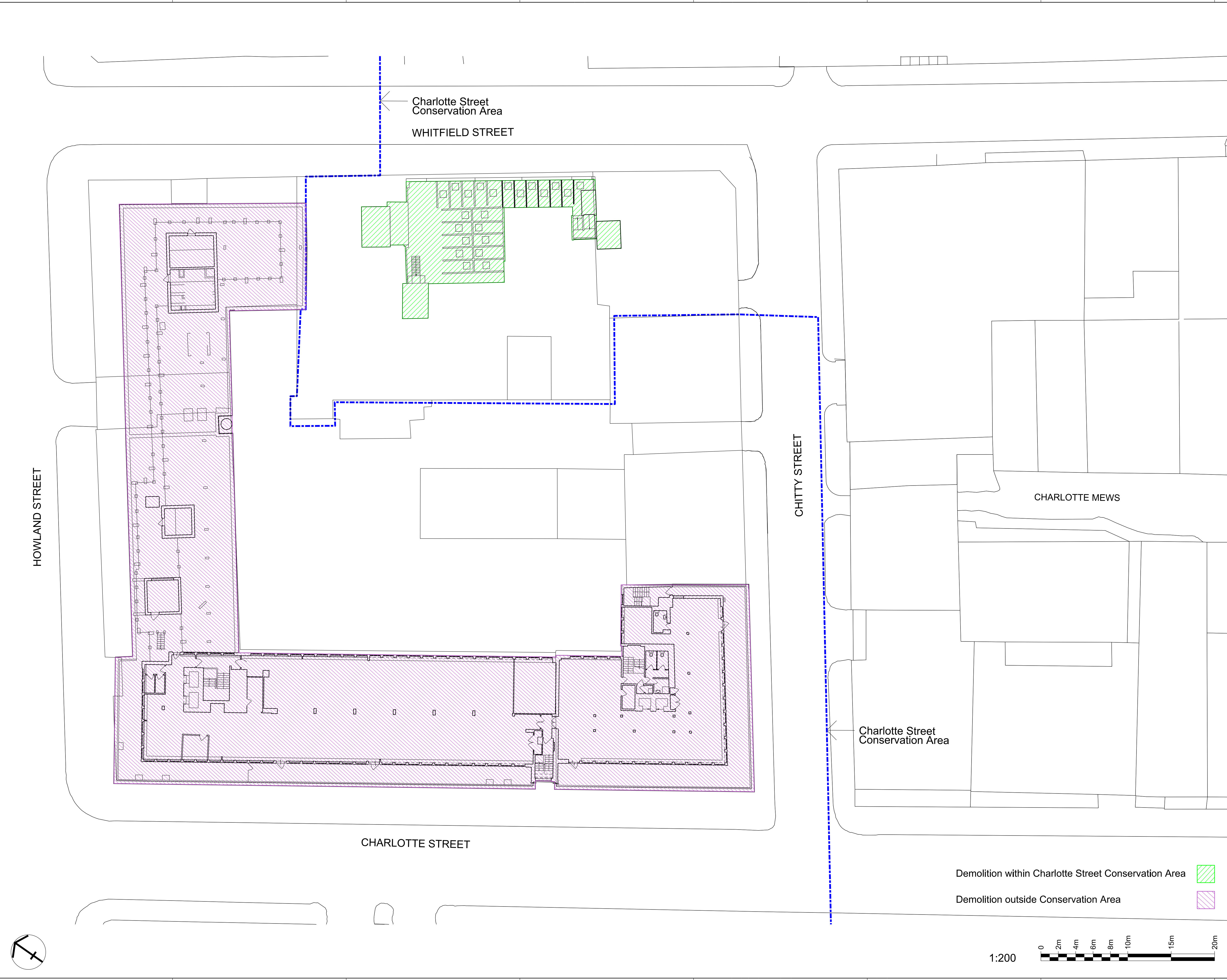
Scale	Paper Size	Date
1:200	@A1	09.12.10
Project No.	Draw No.	Rev No.
<b>0355</b>	<b>P1105</b>	<b>01</b>

Substantial demolition outside Conservation Area

Demolition within Charlotte Street Conservation Area







- General Notes**
- Dimensions are in millimetres unless stated otherwise.
  - Levels are in metres AOD unless stated otherwise.
  - Dimensions govern. Do not scale off drawing.
  - All dimensions to be verified on site before proceeding.
  - All discrepancies to be notified in writing to Make Limited.

© Make Limited 2008

**Additional Notes**

- All landscaping is illustrative.
- All entrances and internal layouts are illustrative.
- All drawings should be viewed at A1.  
 1:1250@A1 = 1:2500@A3  
 1:500@A1 = 1:1000@A3  
 1:200@A1 = 1:400@A3  
 1:50@A1 = 1:100@A3  
 These scales are approximate. Do not scale off drawings.

- Material descriptions:**
- A New fair-faced brickwork
    - i Type 1 (Charlotte Street)
    - ii Type 2 (New Chitty Street elevation)
    - iii Type 3 (Chitty Street residential)
    - iv Type 4 (Whitfield Street residential)
    - v Type 5 (New Whitfield Street extension)
    - vi Type 6 (New 14 Charlotte Mews)
  - B Mix of glass & opaque metal cladding panels
  - C Set-back bays comprised of transparent glass windows with metal reveals & opaque metal cladding panels
  - D Pushed-out bays comprised of transparent glass windows with metal reveals & opaque metal cladding panels
  - E Metal-louvers to roof plant
  - F New fair-faced brick screen wall with metallic channel
  - G Perforated metal canopy (brise-soleil)
  - H Glass balustrade with stainless steel channel
  - I Existing facade retained with improved replacement windows.
  - J New prefabricated concrete frame
  - K Glass atrium with metal structure & ETFE roof
  - L Metallic fascia
  - M New fair-faced brickwork to match existing & new windows to match those below
  - N Existing brickwork made good
  - O Existing concrete sills cleaned and made good
  - P Existing stone panelling cleaned and made good
  - Q Existing railings retained
  - R New metal railings painted black to match existing
  - S Green/ brown roof
  - T Terrace/ balcony
  - U Transparent glass panels

01	11/12/15	Section 73 Demolition	JM
00	24/09/13	Section 73	MT
Rev	Date	Reason For Issue	Chk

**make**

55-65 Whitfield Street,  
London, W1T 4HE

tel +44 (0) 20 7636 5151  
 fax +44 (0) 20 7636 5252  
 info@makearchitects.com  
 www.makearchitects.com

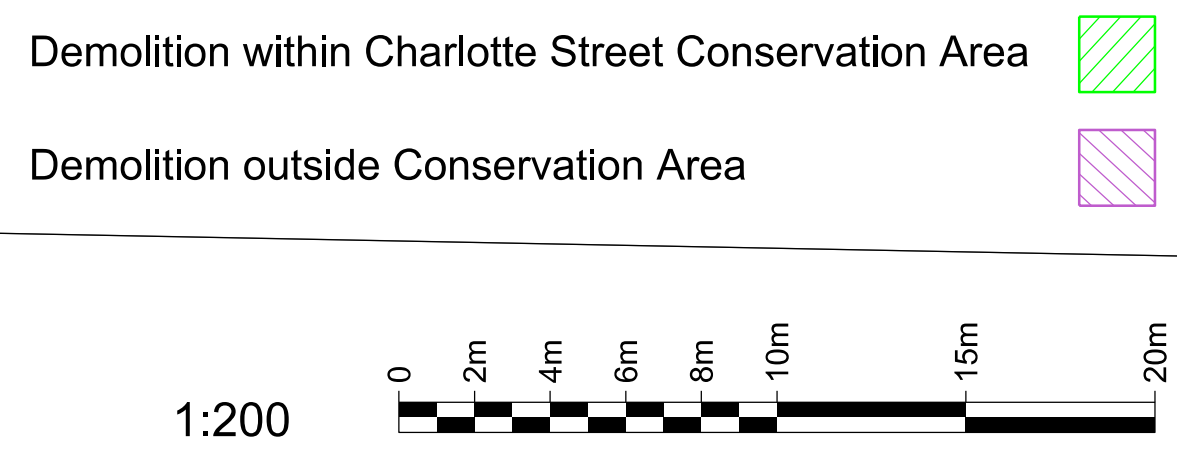
Client  
**West London & Suburban  
 Property Investments Limited**



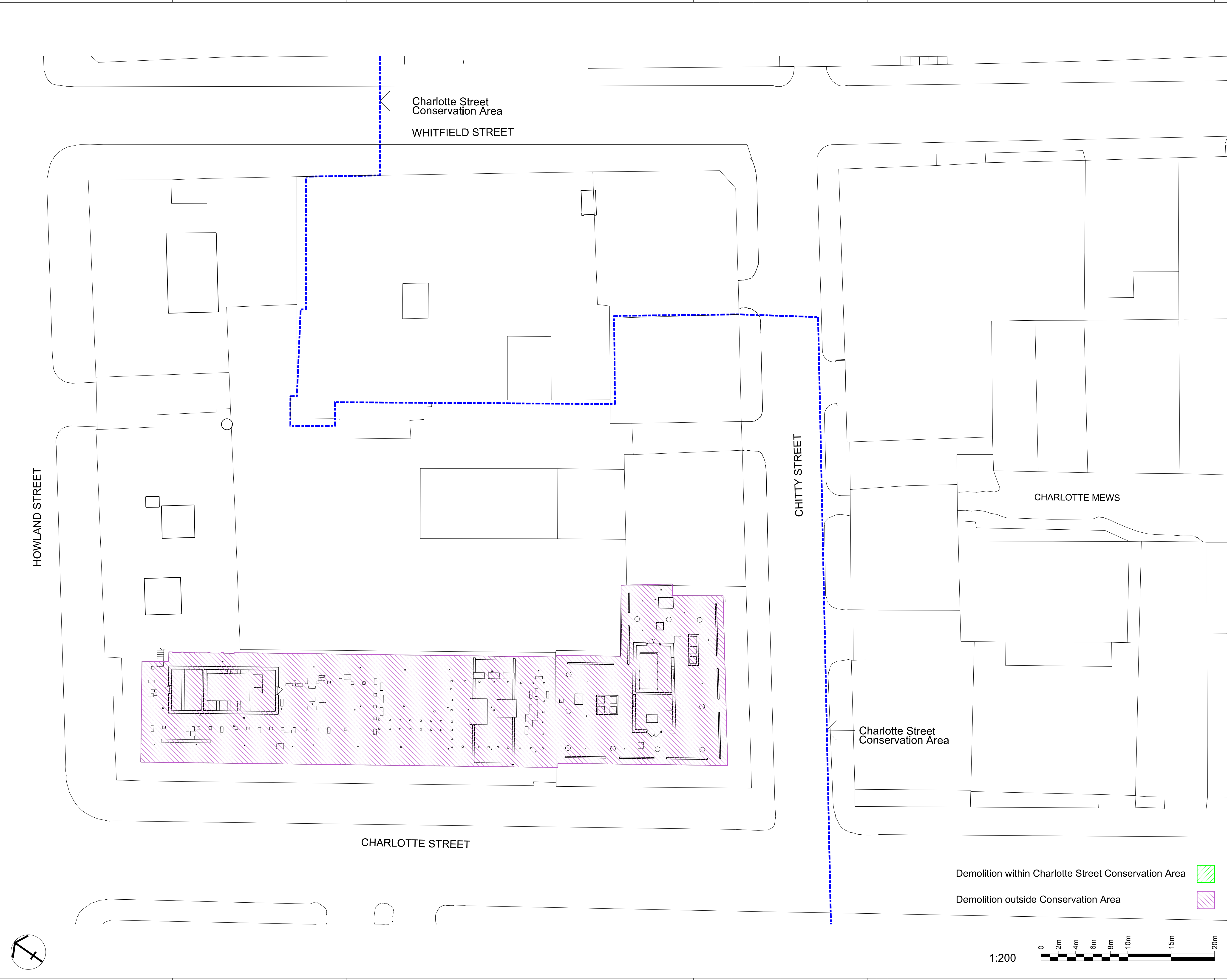
Project  
**80 Charlotte Street &  
 65 Whitfield Street**

Drawing Title  
**Existing / Demolition:  
 Level 06 floor plan**

Scale	Paper Size	Date
1:200	@A1	09.12.10
Project No.	Draw No.	Rev No.
<b>0355</b>	<b>P1106</b>	<b>01</b>







- General Notes**
1. Dimensions are in millimetres unless stated otherwise.
  2. Levels are in metres AOD unless stated otherwise.
  3. Dimensions govern. Do not scale off drawing.
  4. All dimensions to be verified on site before proceeding.
  5. All discrepancies to be notified in writing to Make Limited.

© Make Limited 2008

**Additional Notes**

- A. All landscaping is illustrative.
- B. All entrances and internal layouts are illustrative.
- C. All drawings should be viewed at A1.  
1:1250@A1 = 1:2500@A3  
1:500@A1 = 1:1000@A3  
1:200@A1 = 1:400@A3  
1:50@A1 = 1:100@A3  
These scales are approximate. Do not scale off drawings.

- Material descriptions:**
- A New fair-faced brickwork
    - i Type 1 (Charlotte Street)
    - ii Type 2 (New Chitty Street elevation)
    - iii Type 3 (Chitty Street residential)
    - iv Type 4 (Whitfield Street residential)
    - v Type 5 (New Whitfield Street extension)
    - vi Type 6 (New 14 Charlotte Mews)
  - B Mix of glass & opaque metal cladding panels
  - C Set-back bays comprised of transparent glass windows with metal reveals & opaque metal cladding panels
  - D Pushed-out bays comprised of transparent glass windows with metal reveals & opaque metal cladding panels
  - E Metal-louvers to roof plant
  - F New fair-faced brick screen wall with metallic channel
  - G Perforated metal canopy (brise-soleil)
  - H Glass balustrade with stainless steel channel
  - I Existing facade retained with improved replacement windows.
  - J New prefabricated concrete frame
  - K Glass atrium with metal structure & ETFE roof
  - L Metallic fascia
  - M New fair-faced brickwork to match existing & new windows to match those below
  - N Existing brickwork made good
  - O Existing concrete sills cleaned and made good
  - P Existing stone panelling cleaned and made good
  - Q Existing railings retained
  - R New metal railings painted black to match existing
  - S Green/ brown roof
  - T Terrace/ balcony
  - U Transparent glass panels

01	11/12/15	Section 73 Demolition	JM
00	24/09/13	Section 73	MT
Rev	Date	Reason For Issue	Chk

**make**

55-65 Whitfield Street,  
London, W1T 4HE

tel +44 (0) 20 7636 5151  
fax +44 (0) 20 7636 5252  
info@makearchitects.com  
www.makearchitects.com

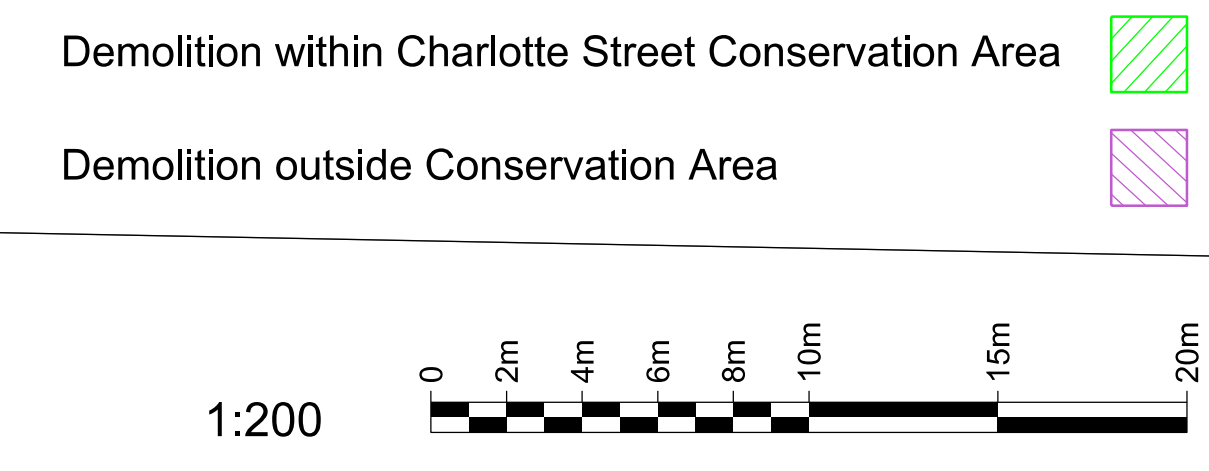
Client  
**West London & Suburban  
Property Investments Limited**



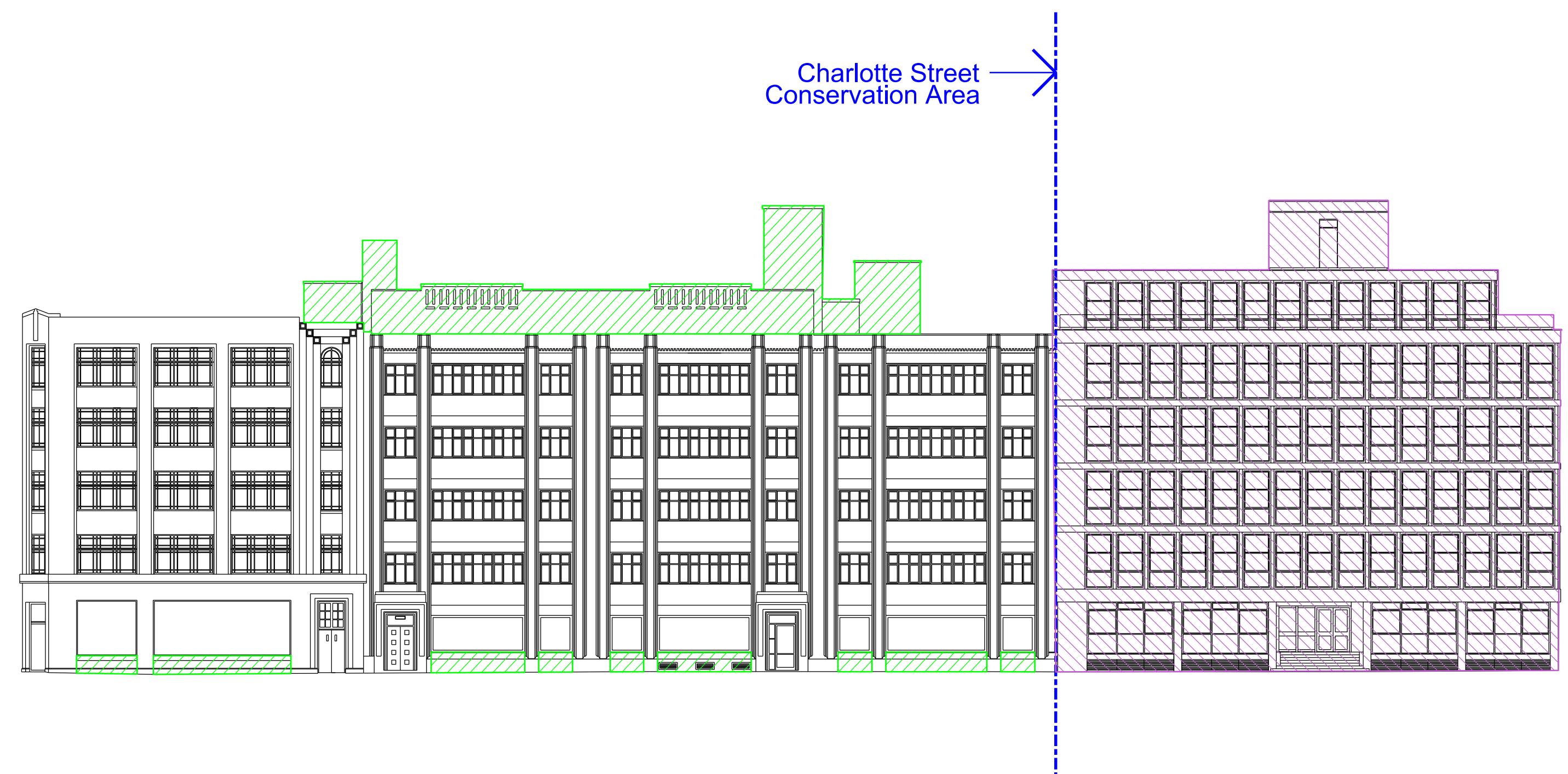
Project  
**80 Charlotte Street &  
65 Whitfield Street**

Drawing Title  
**Existing / Demolition:  
Level 07 floor plan**

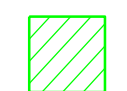
Scale	Paper Size	Date
1:200	@A1	09.12.10
Project No.	Draw No.	Rev No.
<b>0355</b>	<b>P1107</b>	<b>01</b>








Charlotte Street Conservation Area

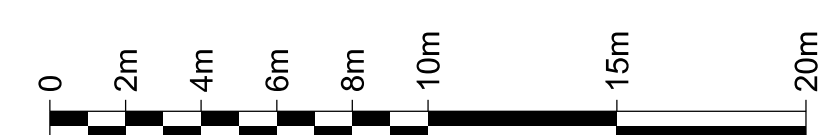
Demolition within Charlotte Street Conservation Area 

Demolition outside Conservation Area 

01 Whitfield Elevation E-W

1:200

1:200



- General Notes**
- Dimensions are in millimetres unless stated otherwise.
  - Levels are in metres AOD unless stated otherwise.
  - Dimensions govern. Do not scale off drawing.
  - All dimensions to be verified on site before proceeding.
  - All discrepancies to be notified in writing to Make Limited.

© Make Limited 2008

**Additional Notes**

- All landscaping is illustrative.
- All entrances and internal layouts are illustrative.
- All drawings should be viewed at A1.  
1:1250@A1 = 1:2500@A3  
1:500@A1 = 1:1000@A3  
1:200@A1 = 1:400@A3  
1:50@A1 = 1:100@A3  
These scales are approximate. Do not scale off drawings.

- Material descriptions:**
- A New fair-faced brickwork
    - i Type 1 (Charlotte Street)
    - ii Type 2 (New Chitty Street elevation)
    - iii Type 3 (Chitty Street residential)
    - iv Type 4 (Whitfield Street residential)
    - v Type 5 (New Whitfield Street extension)
    - vi Type 6 (New 14 Charlotte Mews)
  - B Mix of glass & opaque metal cladding panels
  - C Set-back bays comprised of transparent glass windows with metal reveals & opaque metal cladding panels
  - D Pushed-out bays comprised of transparent glass windows with metal reveals & opaque metal cladding panels
  - E Metal-louvers to roof plant
  - F New fair-faced brick screen wall with metallic channel
  - G Perforated metal canopy (brise-soleil)
  - H Glass balustrade with stainless steel channel
  - I Existing facade retained with improved replacement windows.
  - J New prefabricated concrete frame
  - K Glass atrium with metal structure & ETFE roof
  - L Metallic fascia
  - M New fair-faced brickwork to match existing & new windows to match those below
  - N Existing brickwork made good
  - O Existing concrete sills cleaned and made good
  - P Existing stone panelling cleaned and made good
  - Q Existing railings retained
  - R New metal railings painted black to match existing
  - S Green/ brown roof
  - T Terrace/ balcony
  - U Transparent glass panels

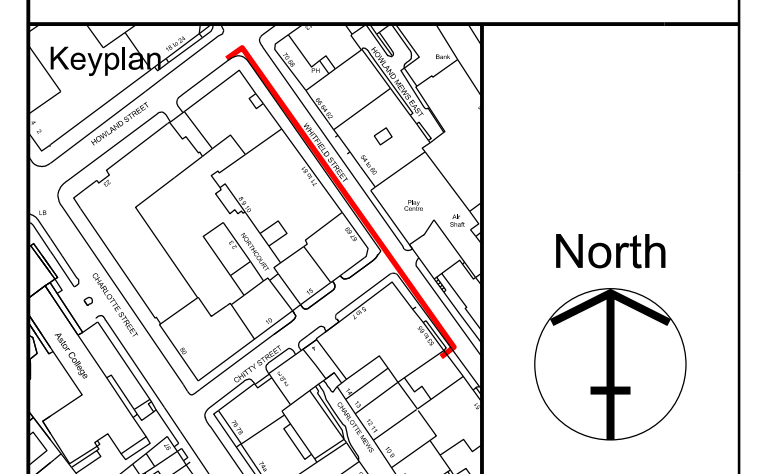
Rev	Date	Reason For Issue	Chk
02	11.12.15	Section 73 Demolition	JM
01	23.10.13	Section 73	MT
00	09.12.10	Planning Application	MT

**make**

55-65 Whitfield Street,  
London, W1T 4HE

tel +44 (0) 20 7636 5151  
fax +44 (0) 20 7636 5252  
info@makearchitects.com  
www.makearchitects.com

Client  
**West London & Suburban  
Property Investments Limited**



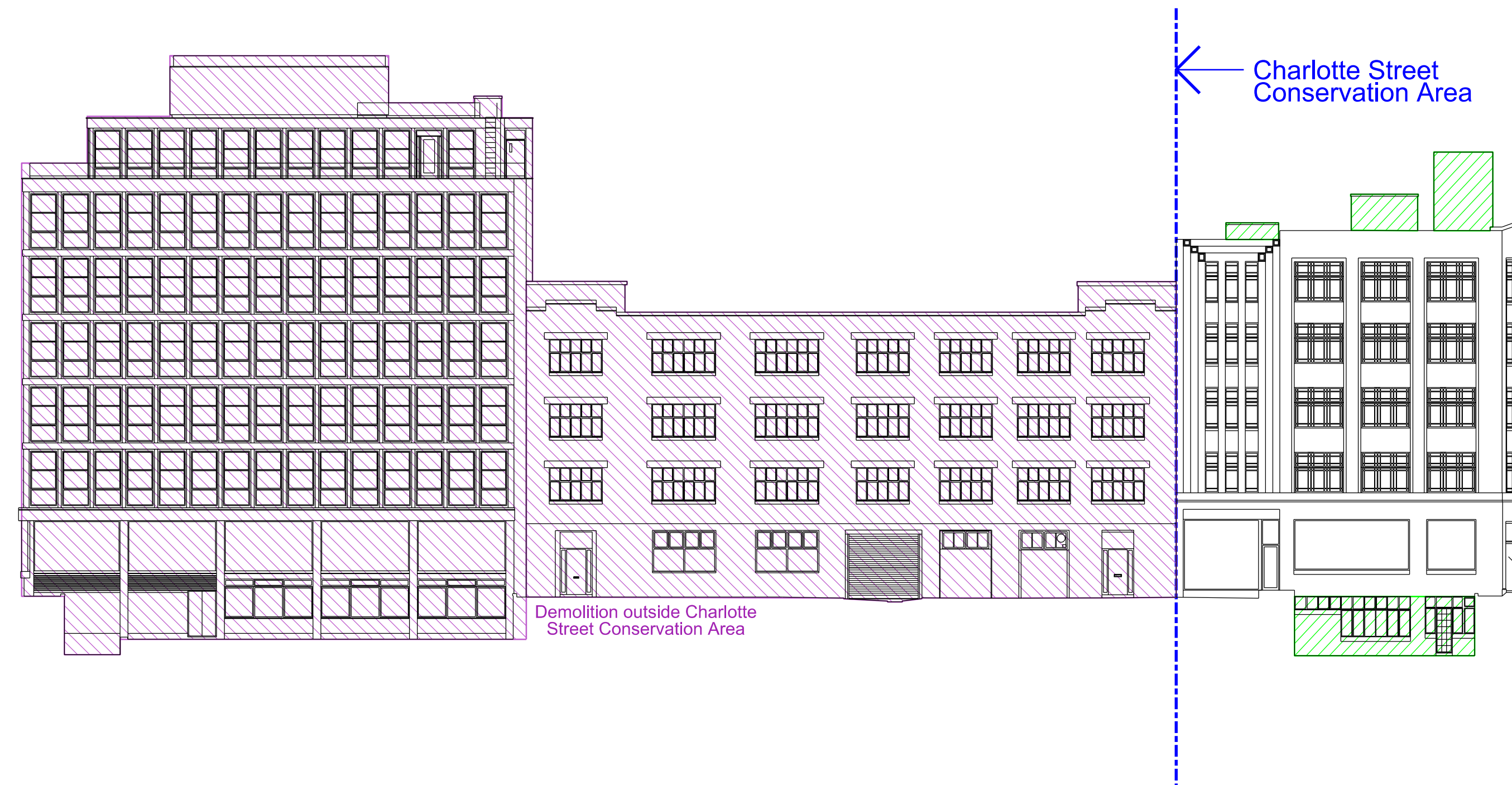
Project  
**80 Charlotte Street &  
65 Whitfield Street**

Drawing Title  
**Existing / Demolition:  
Whitfield Street**

Scale Paper Size Date  
1:200 @A1 09.12.10

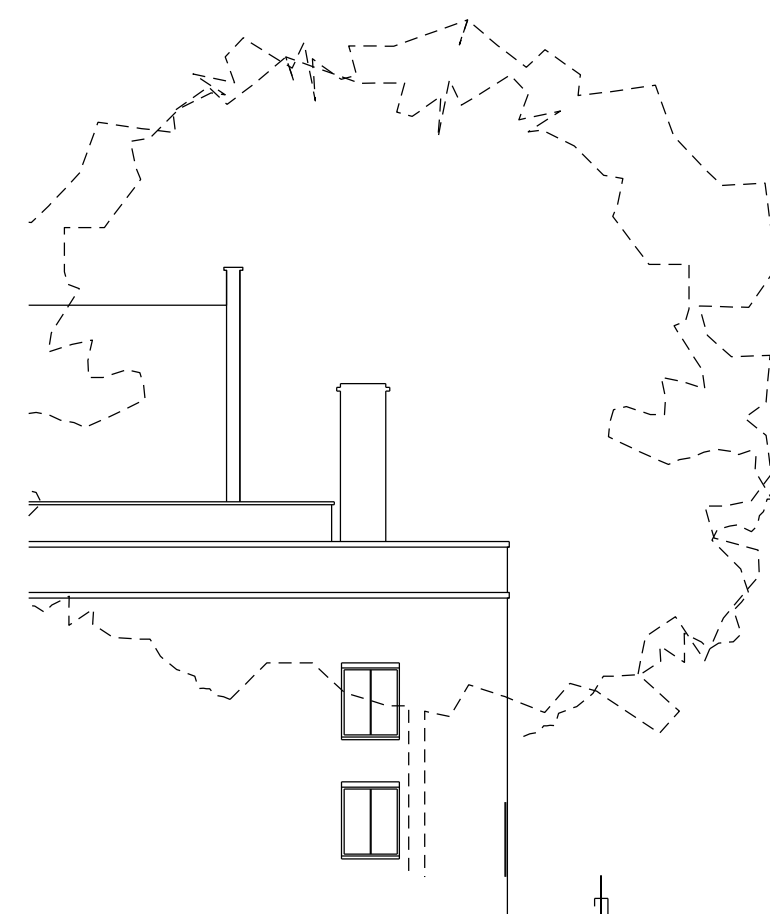
Project No. Draw No. Rev No.  
**0355 P1300 02**





# 01 Chitty Street Elevation (North) E-N

1:200



# 02 Chitty Street Elevation (South) E-S

1:200

Demolition within Charlotte Street Conservation Area

Demolition outside Conservation Area

1:200



- General Notes**
- Dimensions are in millimetres unless stated otherwise.
  - Levels are in metres AOD unless stated otherwise.
  - Dimensions govern. Do not scale off drawing.
  - All dimensions to be verified on site before proceeding.
  - All discrepancies to be notified in writing to Make Limited.

© Make Limited 2008

- Additional Notes**
- All landscaping is illustrative.
  - All entrances and internal layouts are illustrative.
  - All drawings should be viewed at A1.  
 1:1250@A1 = 1:2500@A3  
 1:500@A1 = 1:1000@A3  
 1:200@A1 = 1:400@A3  
 1:50@A1 = 1:100@A3  
 These scales are approximate. Do not scale off drawings.

- Material descriptions:**
- New fair-faced brickwork
    - Type 1 (Charlotte Street)
    - Type 2 (New Chitty Street elevation)
    - Type 3 (Chitty Street residential)
    - Type 4 (Whitfield Street residential)
    - Type 5 (New Whitfield Street extension)
    - Type 6 (New 14 Charlotte Mews)
  - Mix of glass & opaque metal cladding panels
  - Set-back bays comprised of transparent glass windows with metal reveals & opaque metal cladding panels
  - Pushed-out bays comprised of transparent glass windows with metal reveals & opaque metal cladding panels
  - Metal-louvers to roof plant
  - New fair-faced brick screen wall with metallic channel
  - Perforated metal canopy (brise-soleil)
  - Glass balustrade with stainless steel channel
  - Existing facade retained with improved replacement windows.
  - New prefabricated concrete frame
  - Glass atrium with metal structure & ETFE roof
  - Metallic fascia
  - New fair-faced brickwork to match existing & new windows to match those below
  - Existing brickwork made good
  - Existing concrete sills cleaned and made good
  - Existing stone panelling cleaned and made good
  - Existing railings retained
  - New metal railings painted black to match existing
  - Green/ brown roof
  - Terrace/ balcony
  - Transparent glass panels

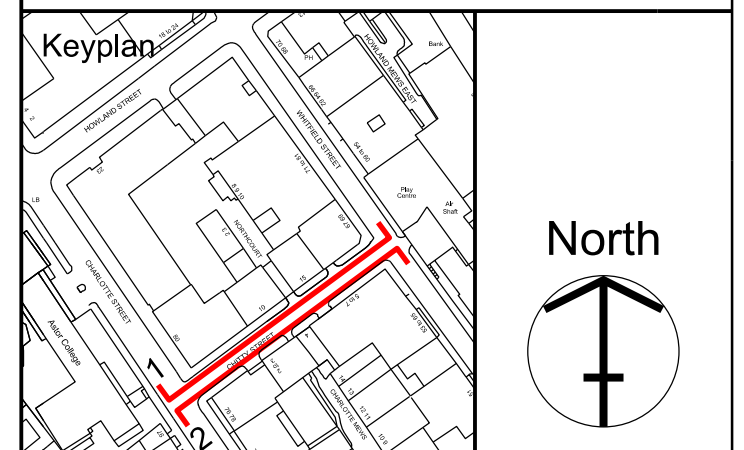
02	11.12.15	Section 73 Demolition	JM
01	23.10.13	Section 73	MT
00	09.12.10	Planning Application	MT
Rev	Date	Reason For Issue	Chk

**make**

55-65 Whitfield Street,  
London, W1T 4HE

tel +44 (0) 20 7636 5151  
fax +44 (0) 20 7636 5252  
info@makearchitects.com  
www.makearchitects.com

Client  
**West London & Suburban  
Property Investments Limited**



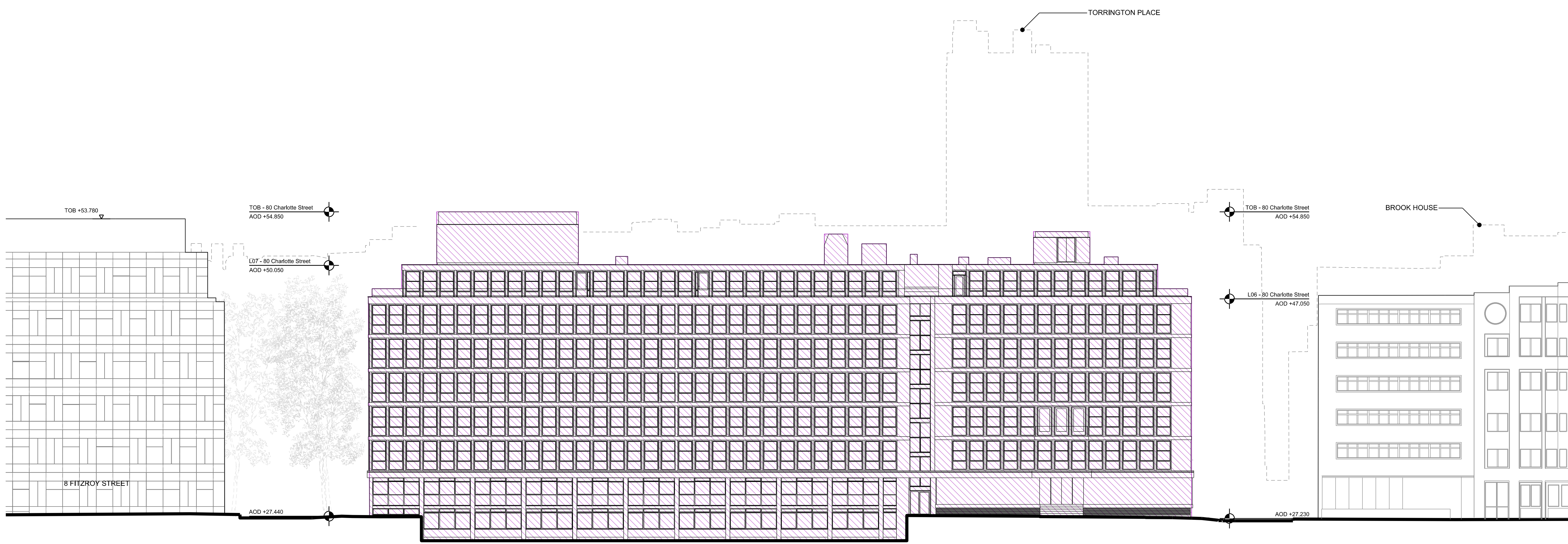
Project  
**80 Charlotte Street &  
65 Whitfield Street**

Drawing Title  
**Existing / Demolition:  
Chitty Street  
North and South Elevation  
E-N, E-S**

Scale	Paper Size	Date
1:200	@A1	09.12.10

Project No.	Draw No.	Rev No.
0355	P1301	02





- General Notes**
1. Dimensions are in millimetres unless stated otherwise.
  2. Levels are in metres AOD unless stated otherwise.
  3. Dimensions govern. Do not scale off drawing.
  4. All dimensions to be verified on site before proceeding.
  5. All discrepancies to be notified in writing to Make Limited.

- © Make Limited 2008
- Additional Notes**
- A. All landscaping is illustrative.
  - B. All entrances and internal layouts are illustrative.
  - C. All drawings should be viewed at A1.  
 1:1250@A1 = 1:2500@A3  
 1:500@A1 = 1:1000@A3  
 1:200@A1 = 1:400@A3  
 1:50@A1 = 1:100@A3  
 These scales are approximate. Do not scale off drawings.
1. THIS SURVEY HAS BEEN COMPOSED BY USE OF PLOWMAN CRAVEN AND MAKE CAD DATA, IN ORDER TO PRODUCE A COMPARISON DRAWING OF THE EXISTING BUILDINGS.
  2. DUE TO RESTRICTED ACCESS TO THE SITE, ZMAP 3D MODELLING HAS BEEN USED FOR OUTLINE DATA AND SURROUNDING BUILDINGS.
  3. THIS SURVEY HAS BEEN CARRIED OUT TO AN ACCURACY CONSISTENT WITH A PRESENTATION SCALE OF 1:200. INTERROGATED DIMENSIONS WILL BE WITHIN THE TOLERANCE ASSOCIATED WITH THIS AND SMALLER SCALES ONLY.
  4. THE IDENTIFICATION OF SERVICE COVERS HAS BEEN MADE BY A SURFACE INSPECTION ONLY. CRITICAL IDENTIFICATIONS SHOULD BE VERIFIED BY THE LIFTING OF COVERS OR A FULL UTILITIES SURVEY.
  5. DUE TO THE INHERENT INSTABILITY OF PAPER MATERIALS, DRAWINGS PLOTTED ON PAPER MAY BE STRETCHED AND DISTORTED. DIMENSIONS SCALED FROM PAPER PLOTS SHOULD THEREFORE BE TREATED WITH CAUTION.
  6. THE ASTA HOUSE DATA WAS SURVEYED BY PLOWMAN CRAVEN IN OCTOBER 2004, PROJECT NO. 8527.
  7. ALL QUOTED DIMENSIONS ARE IN METRES
  8. DRAWING UNITS ARE METRES

01	11.12.15	Section 73 Demolition	JM
00	23.10.13	Section 73	MT
Rev	Date	Reason For Issue	Chk

make		PCA	
55-65 Whitfield Street, London, W1T 4HE		141 Lower Luton Road Harpenden, AL5 5EQ	
tel +44 (0) 20 7636 5151	tel +44 (0) 1582 765566	fax +44 (0) 20 7636 5252	fax +44 (0) 1582 765370
info@makearchitects.com	info@plowmancraven.co.uk	www.makearchitects.com	www.plowmancraven.co.uk

**Client**  
 West London & Suburban  
 Property Investments Limited

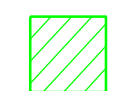
**Project**  
 80 Charlotte Street &  
 65 Whitfield Street


**Drawing Title**  
 Existing/ Demolition elevations:  
 Charlotte Street  
 E-1


**Scale** 1:200    **Paper Size** @A1    **Date** 19.01.11

<b>Project No.</b> 0825	<b>Draw No.</b> P1310	<b>Rev No.</b> 01
----------------------------	--------------------------	----------------------

**Charlotte Elevation**  
 1:200

Demolition within Charlotte Street Conservation Area 

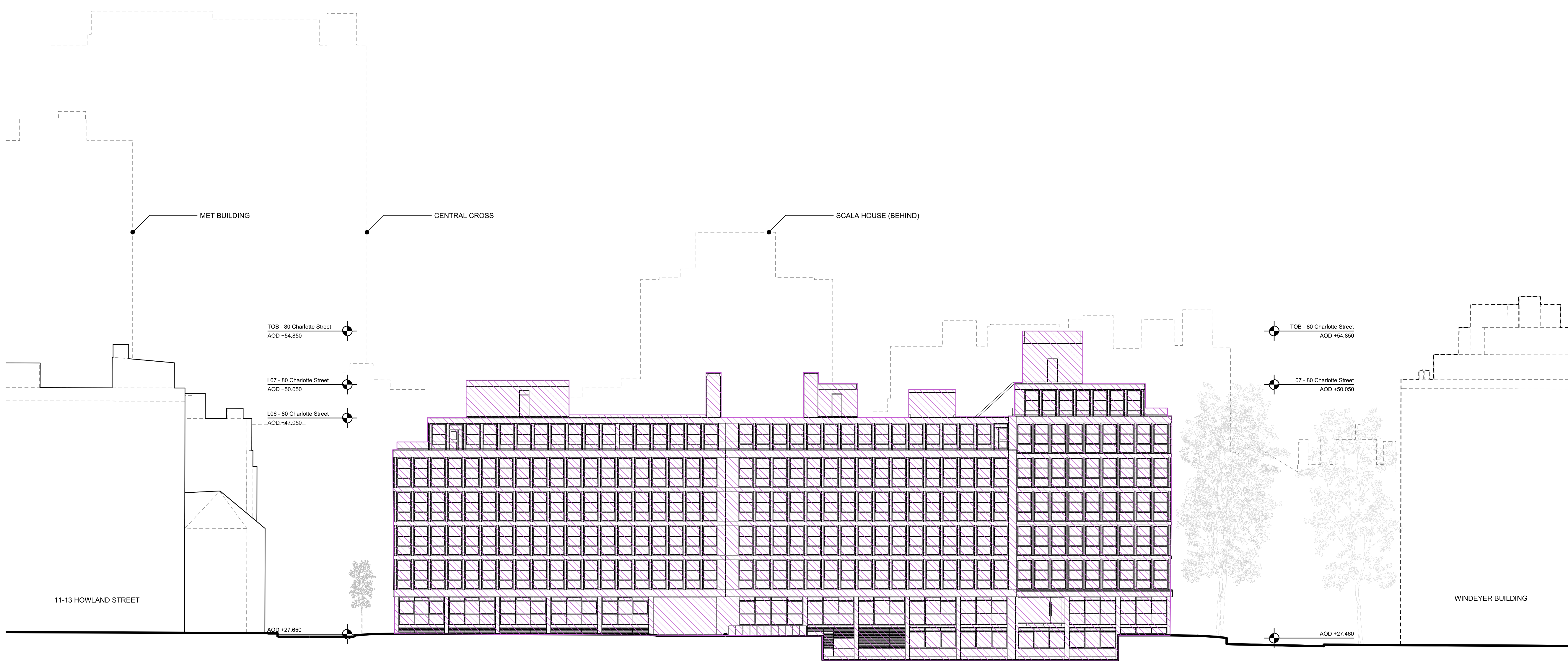
Demolition outside Conservation Area 

1:200 

**Keyplan** 

**North** 





- General Notes**
1. Dimensions are in millimetres unless stated otherwise.
  2. Levels are in metres AOD unless stated otherwise.
  3. Dimensions govern.  
Do not scale off drawing.
  4. All dimensions to be verified on site before proceeding.
  5. All discrepancies to be notified in writing to Make Limited.

- © Make Limited 2008
- Additional Notes**
- A. All landscaping is illustrative.
  - B. All entrances and internal layouts are illustrative.
  - C. All drawings should be viewed at A1.  
1:1250@A1 = 1:2500@A3  
1:500@A1 = 1:1000@A3  
1:200@A1 = 1:400@A3  
1:50@A1 = 1:100@A3  
These scales are approximate. Do not scale off drawings.
1. THIS SURVEY HAS BEEN COMPOSED BY USE OF PLOWMAN CRAVEN AND MAKE CAD DATA, IN ORDER TO PRODUCE A COMPARISON DRAWING OF THE EXISTING BUILDINGS.
  2. DUE TO RESTRICTED ACCESS TO THE SITE, ZMAP 3D MODELLING HAS BEEN USED FOR OUTLINE DATA AND SURROUNDING BUILDINGS.
  3. THIS SURVEY HAS BEEN CARRIED OUT TO AN ACCURACY CONSISTENT WITH A PRESENTATION SCALE OF 1:200. INTERROGATED DIMENSIONS WILL BE WITHIN THE TOLERANCE ASSOCIATED WITH THIS AND SMALLER SCALES ONLY.
  4. THE IDENTIFICATION OF SERVICE COVERS HAS BEEN MADE BY A SURFACE INSPECTION ONLY. CRITICAL IDENTIFICATIONS SHOULD BE VERIFIED BY THE LIFTING OF COVERS OR A FULL UTILITIES SURVEY.
  5. DUE TO THE INHERENT INSTABILITY OF PAPER MATERIALS, DRAWINGS PLOTTED ON PAPER MAY BE STRETCHED AND DISTORTED. DIMENSIONS SCALED FROM PAPER PLOTS SHOULD THEREFORE BE TREATED WITH CAUTION.
  6. THE ASTA HOUSE DATA WAS SURVEYED BY PLOWMAN CRAVEN IN OCTOBER 2004, PROJECT NO. 8527.
  7. ALL QUOTED DIMENSIONS ARE IN METRES
  8. DRAWING UNITS ARE METRES

01	11.12.15	Section 73 Demolition	JM
00	23.10.13	Section 73	MT
Rev	Date	Reason For Issue	Chk

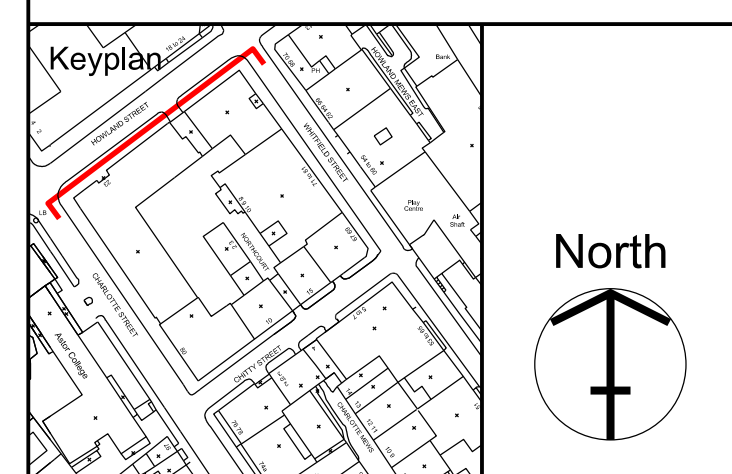
01	11.12.15	Section 73 Demolition	JM
00	23.10.13	Section 73	MT
Rev	Date	Reason For Issue	Chk

**make** **PCA**

55-65 Whitfield Street, London, W1T 4HE  
141 Lower Luton Road, Harpenden, AL5 5EQ

tel +44 (0) 20 7636 5151 tel +44 (0) 1582 765566  
fax +44 (0) 20 7636 5252 fax +44 (0) 1582 765370  
info@makearchitects.com info@plowmancraven.co.uk  
www.makearchitects.com www.plowmancraven.co.uk

Client  
**West London & Suburban  
Property Investments Limited**



Project  
**80 Charlotte Street &  
65 Whitfield Street**

Drawing Title  
**Existing/ Demolition elevation:  
Howland Street  
E-2**

Scale	Paper Size	Date
1: 200	@A1	19.01.11
Project No.	Draw No.	Rev No.
<b>0825</b>	<b>P1311</b>	<b>01</b>

Demolition within Charlotte Street Conservation Area

Demolition outside Conservation Area



**Howland Elevation**  
1:200