

- General Notes
1. Dimensions are in millimetres unless stated otherwise.
 2. Levels are in metres AOD unless stated otherwise.
 3. Dimensions govern. Do not scale off drawing.
 4. All dimensions to be verified on site before proceeding.
 5. All discrepancies to be notified in writing to Make Limited.

- © Make Limited 2014
- NOTES:
1. All new and retained existing structure (walls, columns and downstands beams) to be confirmed by Structural Engineer.
 2. All plant areas and services roars (sizes locations, and routes) to be confirmed by Mechanical Engineer.
 3. Changes to the envelope from the consented planning scheme are to be reviewed and confirmed by Planning Consultant.
 4. Client to confirm Ground and Lower Ground retail strategy. Planning consent for LG/GF A1 retail limited to a maximum of 2,499sq.m, with A3 Use on Howland-Whitfield St corner.
 5. Refer to M&E consultant report for current M&E retail allowance.
 6. VRF's to perimeter of LG/GF are required if used as office.
 7. Access strategy to Ground and Lower Ground floors from street level is to be developed based on Use type and space planning.
 8. Part-M & DDA compliance (disabled toilets, ramps) to be reviewed by access consultant.
 9. Cleaning & maintenance to be reviewed (atrium, facade) by building maintenance consultant.
 10. Existing structure based on Arup original design drawings & PCA Survey (2010).
 11. New Structure based on engineers information.
 12. Terraces, landscaping, park, roof plant, and residential layouts illustrative, refer to separate reports.
 13. Additional terraces and changes to atrium to be confirmed by planning authority.
 14. Acoustic performance to be confirmed by acoustic consultant.

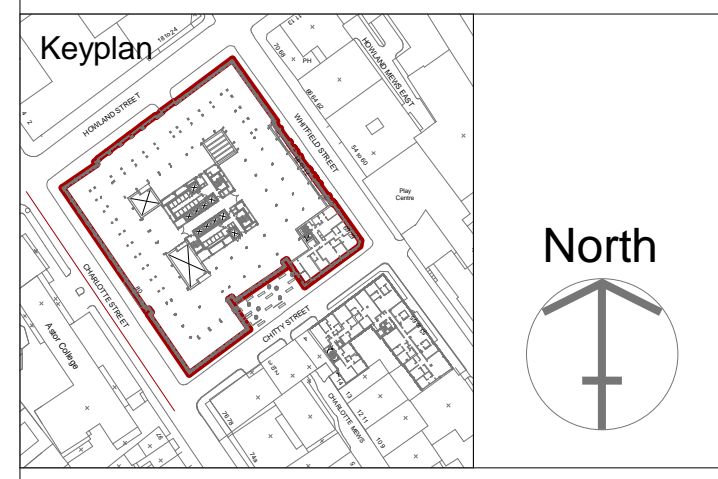
NOTE: Any areas measured from these plans by a quantity surveyor, relate to the likely areas of the building at the current stage of the design. Any decisions to be made on the basis of these predictions, whether as to project viability, pre-letting, lease agreement or the like should include due allowance for the increases and decreases inherent in the design development and building processes.

Rev	Date	Reason For Issue	Chk
04	11/12/15	Section 73 Demolition	LT
03	13/03/15	Discharge of Conditions	MT
02	09/09/14	Section 73 Roof Terrace	MT
01	07/02/13	Discharge of Conditions	MT
00	12/12/12	Discharge of Conditions	MT

FOR PLANNING
DRAWING STATUS

make
32 Cleveland Street,
London, W1T 4JY
tel +44 (0) 20 7636 5151
info@makearchitects.com
www.makearchitects.com

Client
Derwent London
West London and Suburban
Property Investments Ltd.
W1S 2ER

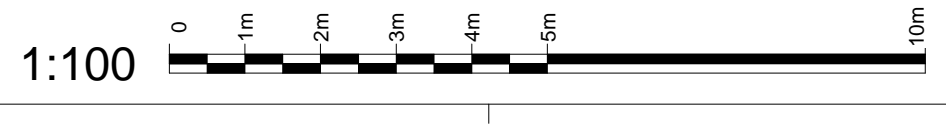


Project
80 Charlotte Street

Drawing Title
Proposed Elevation
Charlotte Street

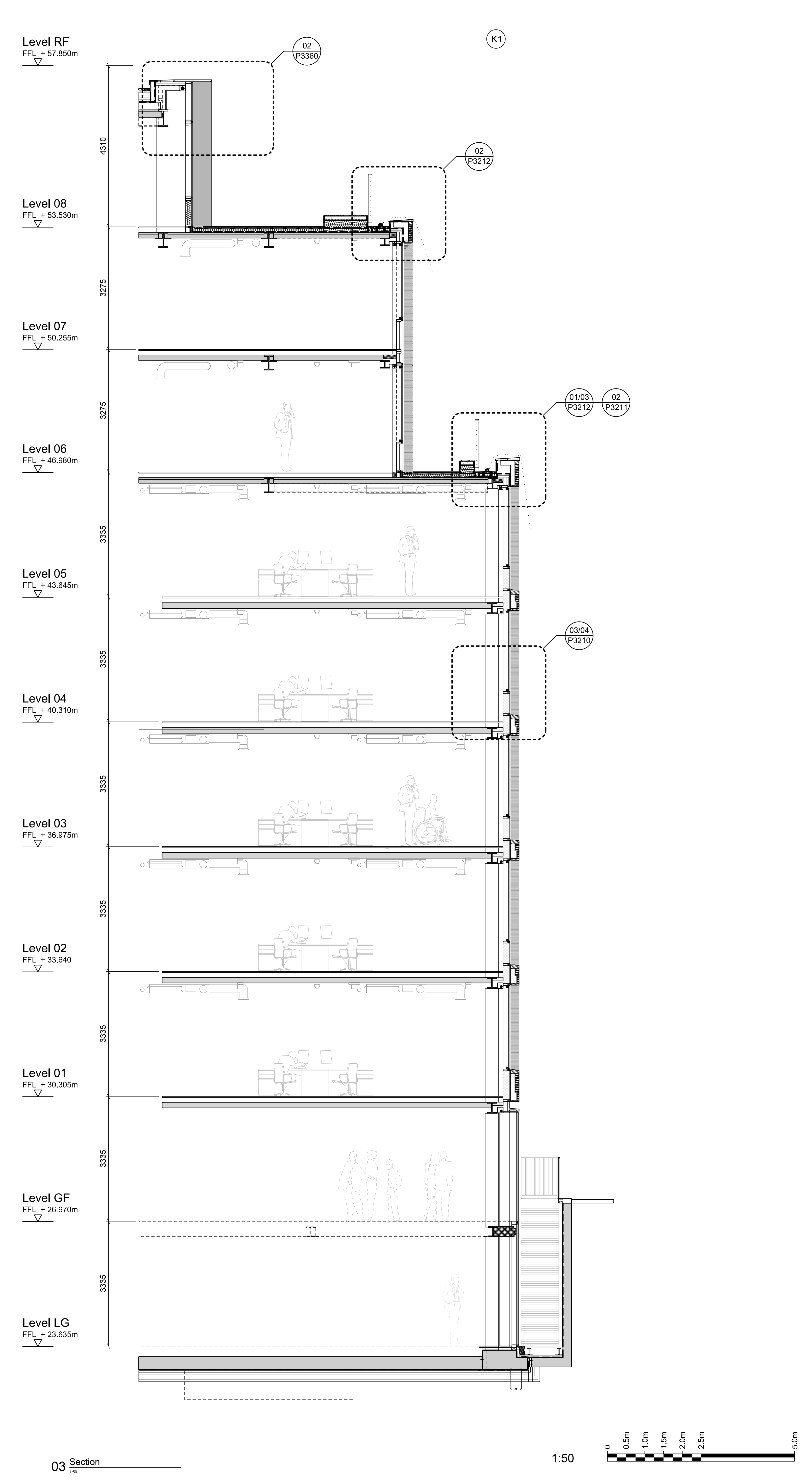
Scale	Paper Size	Date
1 : 100	@A0	12.12.12
Project No.	Draw No.	Rev No.
0825	P2301	04

Elevation - Charlotte Street
1:100





01 Plan



03 Section

1:50

- General Notes
1. Dimensions are in millimetres unless stated otherwise.
 2. Levels are in metres AOD unless stated otherwise.
 3. Dimensions govern. Do not scale off drawing.
 4. All dimensions to be verified on site before proceeding.
 5. All discrepancies to be notified in writing to Make Limited.
- © Make Limited 2015

- NOTES:
1. All new and retained existing structure (walls, columns and downstands beams) to be confirmed by Structural Engineer.
 2. All plant areas and services risers (sizes, locations, and routes) to be confirmed by Mechanical Engineer.
 3. Changes to the envelope from the consented planning scheme are to be reviewed and confirmed by Planning Consultant.
 4. Client to confirm Ground and Lower Ground retail strategy.
 5. Planning consent for LG/GF A1 retail limited to a maximum of 2,499sq.m. with A3 Use on Howard/Whitfield St corner.
 6. Refer to M&E consultant report for current M&E retail allowance.
 7. VRF's to perimeter of LG/GF are required if used as office.
 8. Access strategy to Ground and Lower Ground floors from street level is to be developed based on Use type and space planning.
 9. Part-M & DDA compliance (disabled toilets, ramps) to be reviewed by access consultant.
 10. Cleaning & maintenance to be reviewed (atrium, facade) by building maintenance consultant.
 11. Existing structure based on Arup original design drawings & PCA Survey (2010).
 12. New Structure based on engineers information.
 13. Terraces, landscaping, park, roof plant, and residential layouts illustrative, refer to separate reports.
 14. Additional terraces and changes to atrium to be confirmed by planning authority.
 15. Acoustic performance to be confirmed by acoustic consultant.
- NOTE: Any areas measured from these plans by a quantity surveyor, relate to the likely areas of the building at the current stage of the design. Any decisions to be made on the basis of these predictions, whether as to project viability, pre-letting, lease agreement or the like should include due allowance for the increases and decreases inherent in the design development and building processes.

Rev	Date	Reason For Issue	Chk
04	11/12/15	Section 73 Demolition	LT
03	13/03/15	Discharge of Conditions	MT
02	21/05/14	Section 73 Block K	MT
01	07/02/13	Discharge of Conditions	MT
00	12/12/12	Discharge of Conditions	

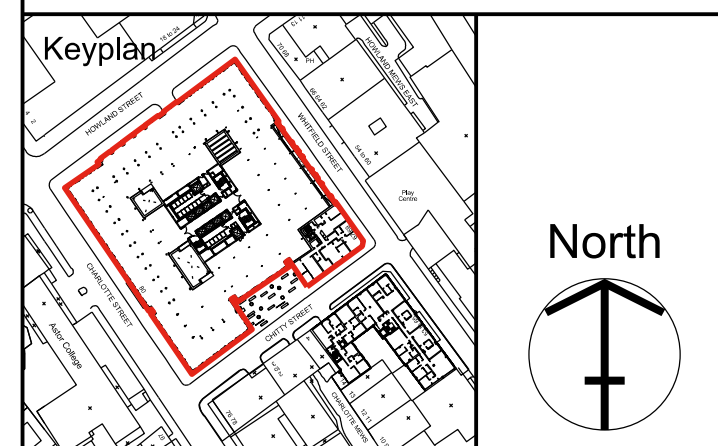
Rev	Date	Reason For Issue	Chk
04	11/12/15	Section 73 Demolition	LT
03	13/03/15	Discharge of Conditions	MT
02	21/05/14	Section 73 Block K	MT
01	07/02/13	Discharge of Conditions	MT
00	12/12/12	Discharge of Conditions	

FOR PLANNING

DRAWING STATUS

make
 32 Cleveland Street,
 London, W1T 4JY
 tel +44 (0) 20 7636 5151
 info@makearchitects.com
 www.makearchitects.com

Client
Derwent London
 West London and Suburban
 Property Investments Ltd.
 W1S 2ER



Project
80 Charlotte Street

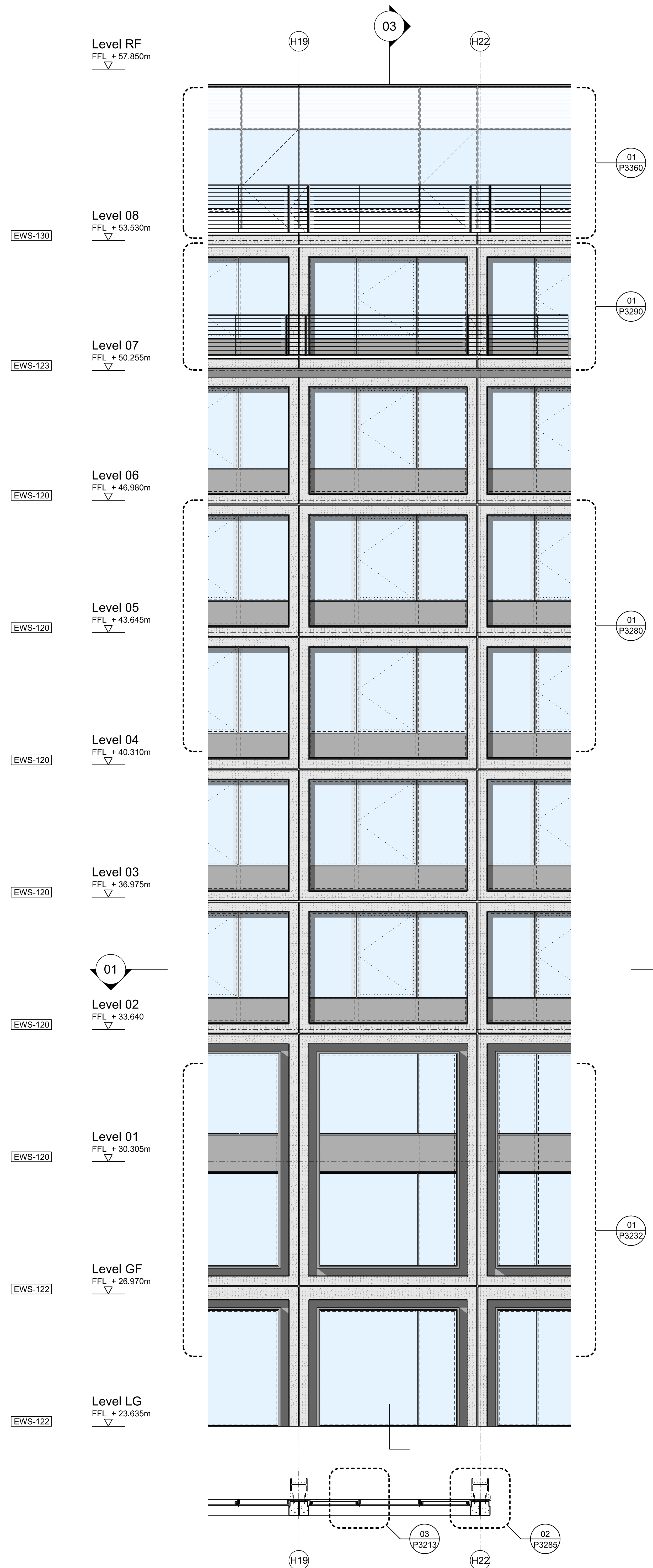
Drawing Title
Detail 01
 EWS-101/ 102 /103/ 130
 Charlotte-Chitty Street facade
 (80 Charlotte St, Block-K)

Scale 1: 50 Paper Size @A0 Date 12.12.12

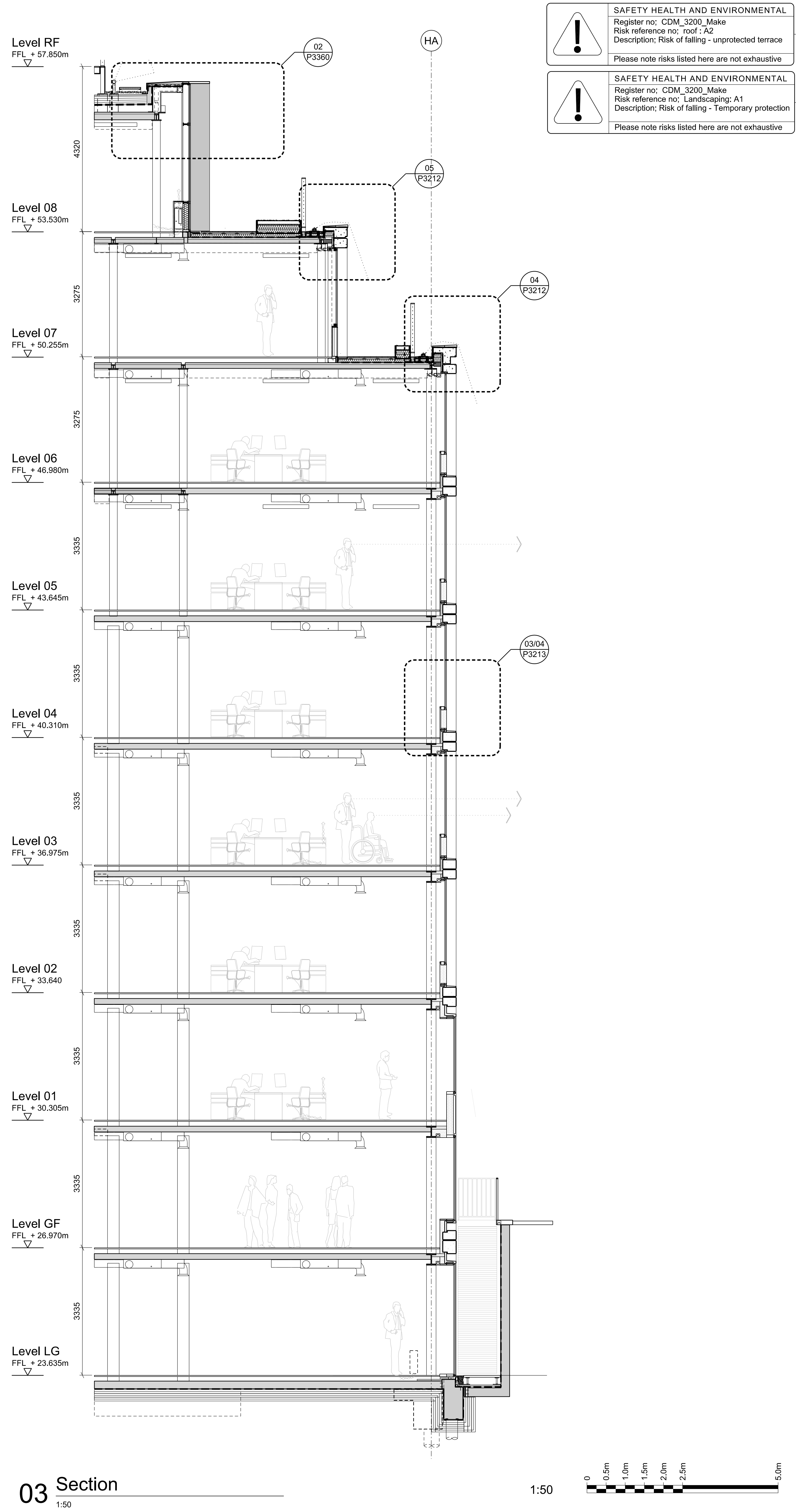
Project No.	Draw No.	Rev No.
0825	P3101	04

02 Elevation
1:50

01 Plan
1:50



03 Section
1:50



SAFETY HEALTH AND ENVIRONMENTAL
 Register no: CDM_3200_Make
 Risk reference no: roof_A2
 Description: Risk of falling - unprotected terrace
 Please note risks listed here are not exhaustive

SAFETY HEALTH AND ENVIRONMENTAL
 Register no: CDM_3200_Make
 Risk reference no: Landscaping: A1
 Description: Risk of falling - Temporary protection
 Please note risks listed here are not exhaustive

- General Notes
- Dimensions are in millimetres unless stated otherwise.
 - Levels are in metres AOD unless stated otherwise.
 - Dimensions govern.
 - All dimensions to be verified on site before proceeding.
 - All discrepancies to be notified in writing to Make Limited.
- © Make Limited 2015

- NOTES:
- All new and retained existing structure (walls, columns and downstands beams) to be confirmed by Structural Engineer.
 - All plant areas and services risers (sizes, locations, and routes) to be confirmed by Mechanical Engineer.
 - Changes to the envelope from the consented planning scheme are to be reviewed and confirmed by Planning Consultant.
 - Client to confirm Ground and Lower Ground retail strategy.
 - Planning consent for LG/GF A1 retail limited to a maximum of 2,499sq.m. with A3 Use on Howard/Whitfield St corner.
 - Refer to M&E consultant report for current M&E retail allowance.
 - VRF's to perimeter of LG/GF are required if used as office.
 - Access strategy to Ground and Lower Ground floors from street level is to be developed based on Use type and space planning.
 - Part-M & DDA compliance (disabled toilets, ramps) to be reviewed by access consultant.
 - Cleaning & maintenance to be reviewed (atrium, facade) by building maintenance consultant.
 - Existing structure based on Arup original design drawings & PCA Survey (2010).
 - New Structure based on engineers information.
 - Terraces, landscaping, park, roof plant, and residential layouts illustrative, refer to separate reports.
 - Additional terraces and changes to atrium to be confirmed by planning authority.
 - Acoustic performance to be confirmed by acoustic consultant.

NOTE: Any areas measured from these plans by a quantity surveyor, relate to the likely areas of the building at the current stage of the design. Any decisions to be made on the basis of these predictions, whether as to project viability, pre-letting lease agreement or the like should include due allowance for the increases and decreases inherent in the design development and building processes.

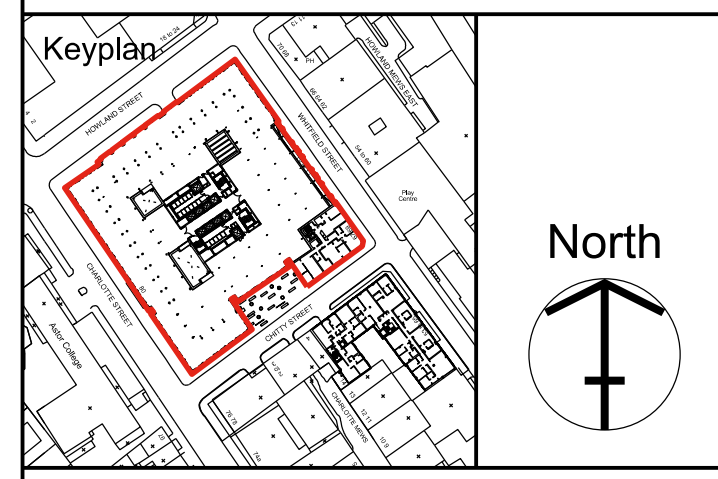
Rev	Date	Reason For Issue	Chk
03	11/12/15	Section 73 Demolition	LT
02	13/03/15	Discharge of Conditions	MT
01	07/02/13	Discharge of Conditions	MT
00	12/12/12	Discharge of Conditions	

FOR PLANNING

DRAWING STATUS

make
 32 Cleveland Street,
 London, W1T 4JY
 tel +44 (0) 20 7636 5151
 info@makearchitects.com
 www.makearchitects.com

Client
Derwent London
 West London and Suburban
 Property Investments Ltd.
 W1S 2ER



Project
80 Charlotte Street

Drawing Title
Detail 02
 EWS-120 / 122 / 123 / 130
 Charlotte-Howard Street facade
 (23 Howland St, Block-H)

Scale	Paper Size	Date
1: 50	@A0	12.12.12
Project No.	Draw No.	Rev No.
0825	P3120	03