

- General Notes
1. Dimensions are in millimetres unless stated otherwise.
  2. Levels are in metres AOD unless stated otherwise.
  3. Dimensions govern. Do not scale off drawing.
  4. All dimensions to be verified on site before proceeding.
  5. All discrepancies to be notified in writing to Make Limited.
- © Make Limited 2014

- NOTES:
1. All new and retained existing structure (walls, columns and downstands beams) to be confirmed by Structural Engineer.
  2. All plant areas and services risers (sizes locations, and routes) to be confirmed by Mechanical Engineer.
  3. Changes to the envelope from the consented planning scheme are to be reviewed and confirmed by Planning Consultant.
  4. Client to confirm Ground and Lower Ground retail strategy. Planning consent for LG/GF A1 retail limited to a maximum of 2,499sq m, with A3 Use on Howard-Whitfield St corner.
  5. Refer to M&E consultant report for current M&E retail allowances.
  6. VRF's to perimeter of LG/GF are required if used as office.
  7. Access strategy to Ground and Lower Ground floors from street level is to be developed based on Use type and space planning.
  8. Part-M & DDA compliance (disabled toilets, ramps) to be reviewed by consultant.
  9. Cleaning & maintenance to be reviewed (atrium, facade) by building maintenance consultant.
  10. Existing structure based on Arup original design drawings & PCA Survey (2010).
  11. New Structure based on engineers information.
  12. Terraces, landscaping, park, roof plant, and residential layouts illustrative, refer to separate reports.
  13. Additional terraces and changes to atrium to be confirmed by planning authority.
  14. Acoustic performance to be confirmed by acoustic consultant.
- NOTE: Any areas measured from these plans by a quantity surveyor, relate to the likely areas of the building at the current stage of the design. Any decisions to be made on the basis of these predictions, whether as to project viability, pre-letting, lease agreement or the like should include due allowance for the increases and decreases inherent in the design development and building processes.

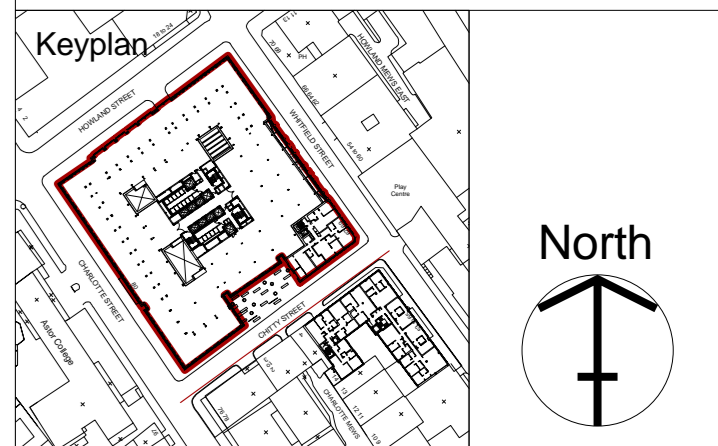
Rev	Date	Reason For Issue	Chk
03	13/03/15	Discharge of Conditions	MT
02	09/09/14	Section 73 Roof Terrace	MT
01	07/02/13	Discharge of Conditions	MT
00	12/12/12	Discharge of Conditions	MT

Rev	Date	Reason For Issue	Chk
03	13/03/15	Discharge of Conditions	MT
02	09/09/14	Section 73 Roof Terrace	MT
01	07/02/13	Discharge of Conditions	MT
00	12/12/12	Discharge of Conditions	MT

**FOR PLANNING**  
DRAWING STATUS

**make**  
13 Fitzroy Street  
London, W1T4BQ  
tel +44 (0) 20 7636 5151  
fax +44 (0) 20 7636 5252  
info@makearchitects.com  
www.makearchitects.com

Client  
Derwent London  
West London and Suburban  
Property Investments Ltd.  
W1S 2ER



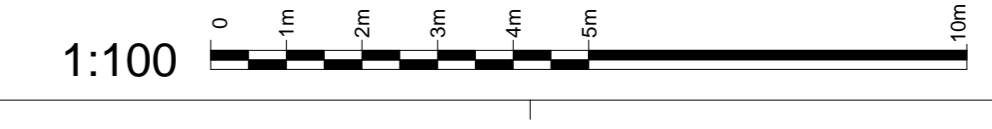
Project  
80 Charlotte Street

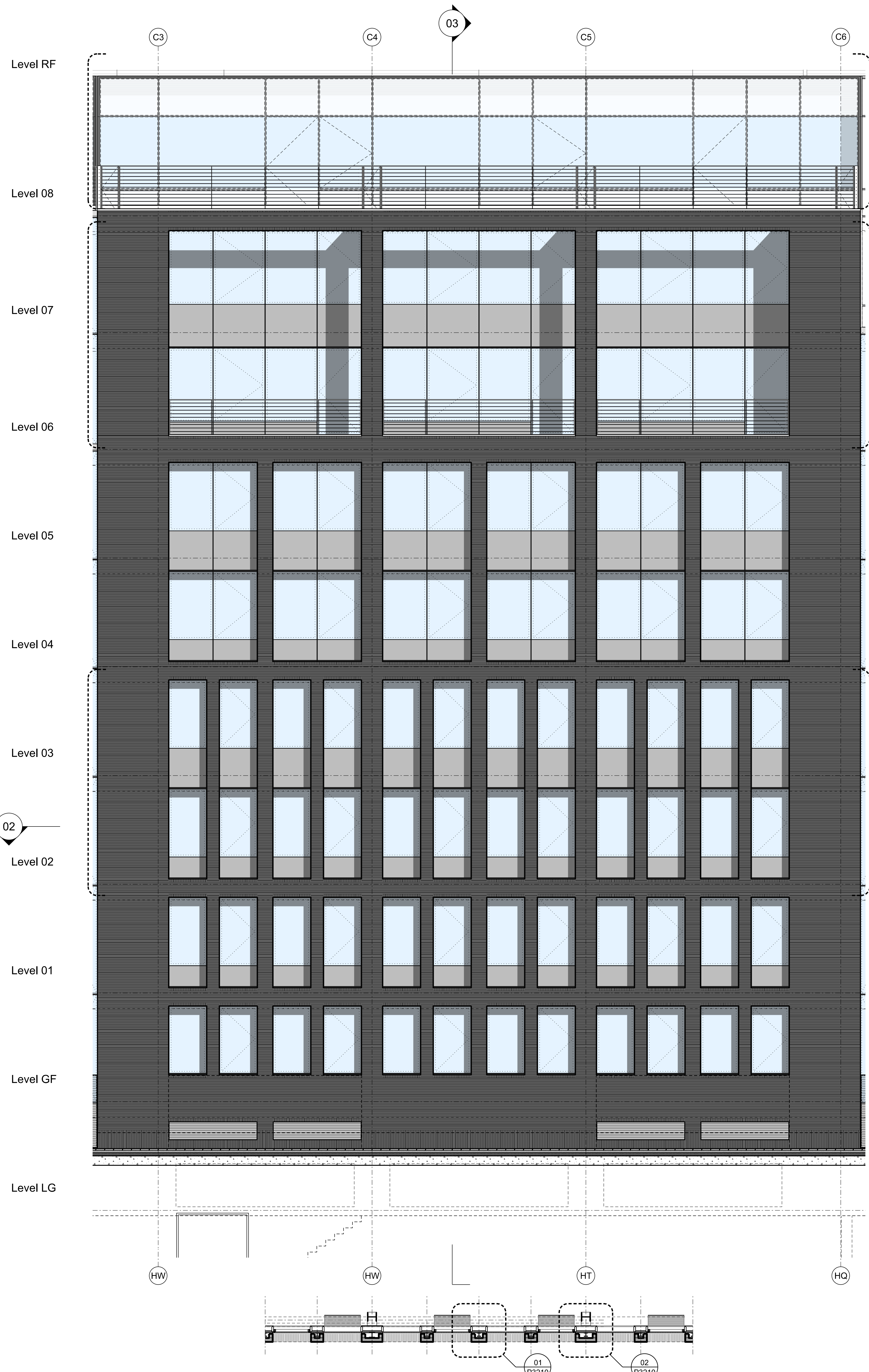
Drawing Title  
Proposed Elevation  
Chitty Street

Scale	Paper Size	Date
1 : 100	@A0	12.12.12
Project No.	Draw No.	Rev No.
0825	P2302	03

Elevation - Chitty Street

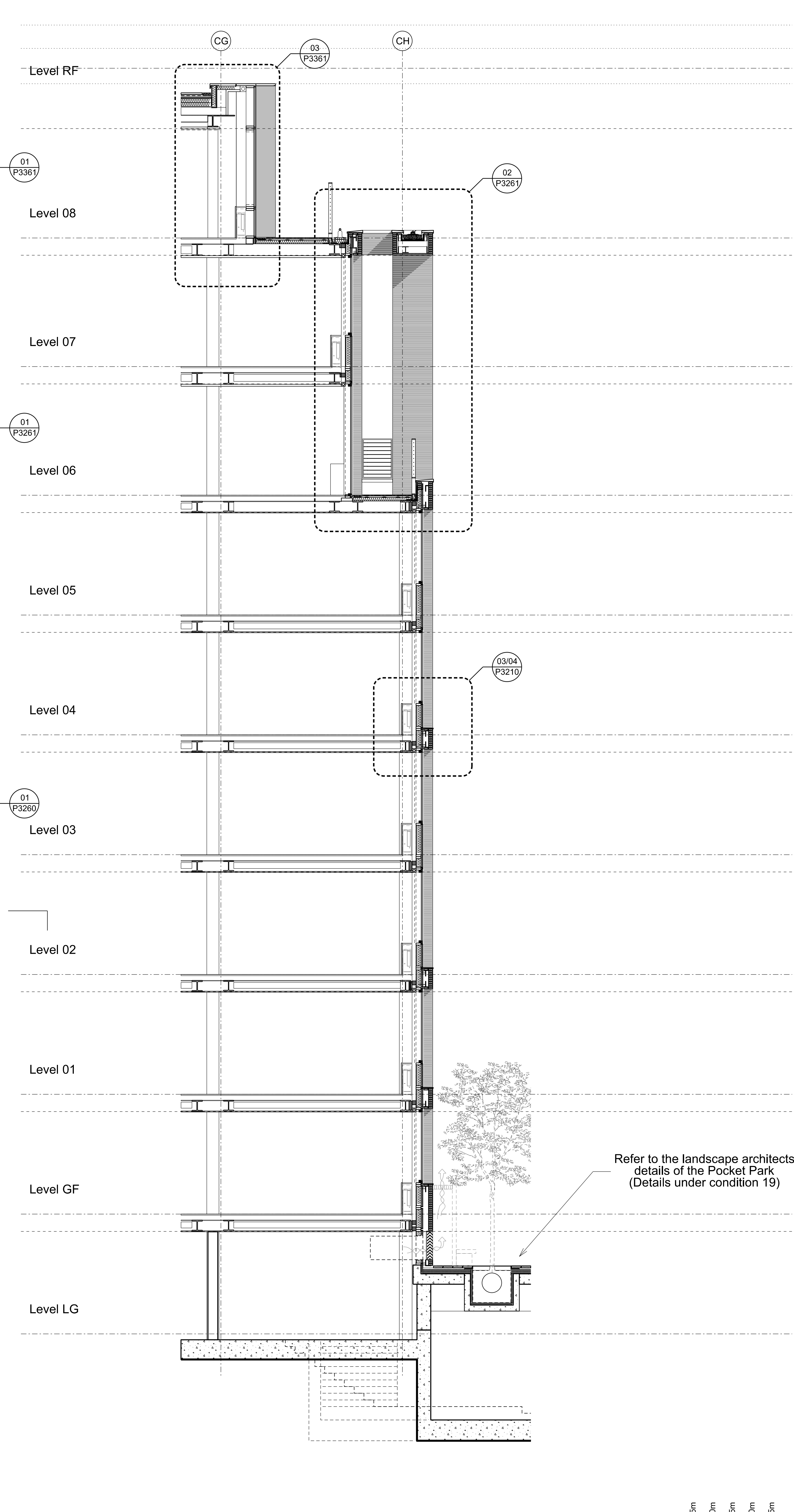
1 : 100





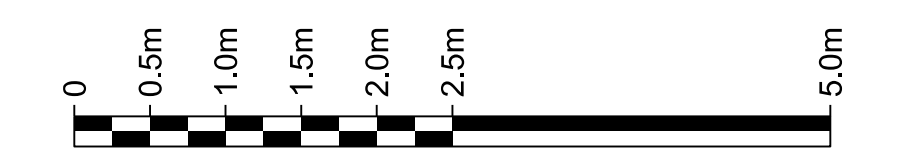
02 Elevation

01 Plan



03 Section

1:50



- General Notes
1. Dimensions are in millimetres unless stated otherwise.
  2. Levels are in metres AOD unless stated otherwise.
  3. Dimensions govern. Do not scale off drawing.
  4. All dimensions to be verified on site before proceeding.
  5. All discrepancies to be notified in writing to Make Limited.
- © Make Limited 2014

- NOTES:
1. All new and retained existing structure (walls, columns and downstands beams) to be confirmed by Structural Engineer.
  2. All plant areas and services risers (sizes, locations, and routes) to be confirmed by Mechanical Engineer.
  3. Changes to the envelope from the consented planning scheme are to be reviewed and confirmed by Planning Consultant.
  4. Client to confirm Ground and Lower Ground retail strategy.
  5. Planning consent for LG/GF A1 retail limited to a maximum of 2,499sq.m. with A3 Use on Howard/Whitfield St corner.
  6. Refer to M&E consultant report for current M&E retail allowance.
  7. VRF's to perimeter of LG/GF are required if used as office.
  8. Access strategy to Ground and Lower Ground floors from street level is to be developed based on Use type and space planning.
  9. Part-M & DDA compliance (disabled toilets, ramps) to be reviewed by access consultant.
  10. Cleaning & maintenance to be reviewed (atrium, facade) by building maintenance consultant.
  11. Existing structure based on Arup original design drawings & PCA Survey (2010).
  12. New Structure based on engineers information.
  13. Terraces, landscaping, park, roof plant, and residential layouts illustrative, refer to separate reports.
  14. Additional terraces and changes to atrium to be confirmed by planning authority.
  15. Acoustic performance to be confirmed by acoustic consultant.

NOTE: Any areas measured from these plans by a quantity surveyor, relate to the likely areas of the building at the current stage of the design. Any decisions to be made on the basis of these predictions, whether as to project viability, pre-letting, lease agreement or the like should include due allowance for the increases and decreases inherent in the design development and building processes.

02	13/03/15	Discharge of Conditions	MT
01	07/02/13	Discharge of Conditions	MT
00	12/12/12	Discharge of Conditions	MT
Rev	Date	Reason For Issue	Chk

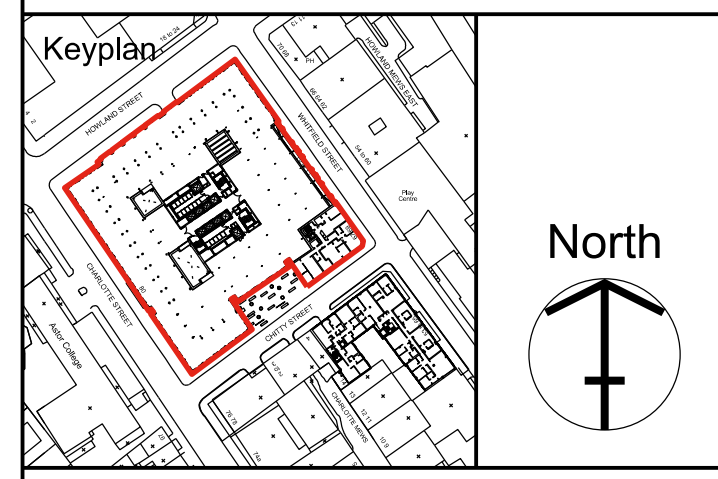
**FOR PLANNING**

DRAWING STATUS

**make**

13 Fitzroy Street,  
London, W1T 4BQ  
tel +44 (0) 20 7636 5151  
fax +44 (0) 20 7636 5252  
info@makearchitects.com  
www.makearchitects.com

Client  
Derwent London  
West London and Suburban  
Property Investments Ltd.  
W1S 2ER

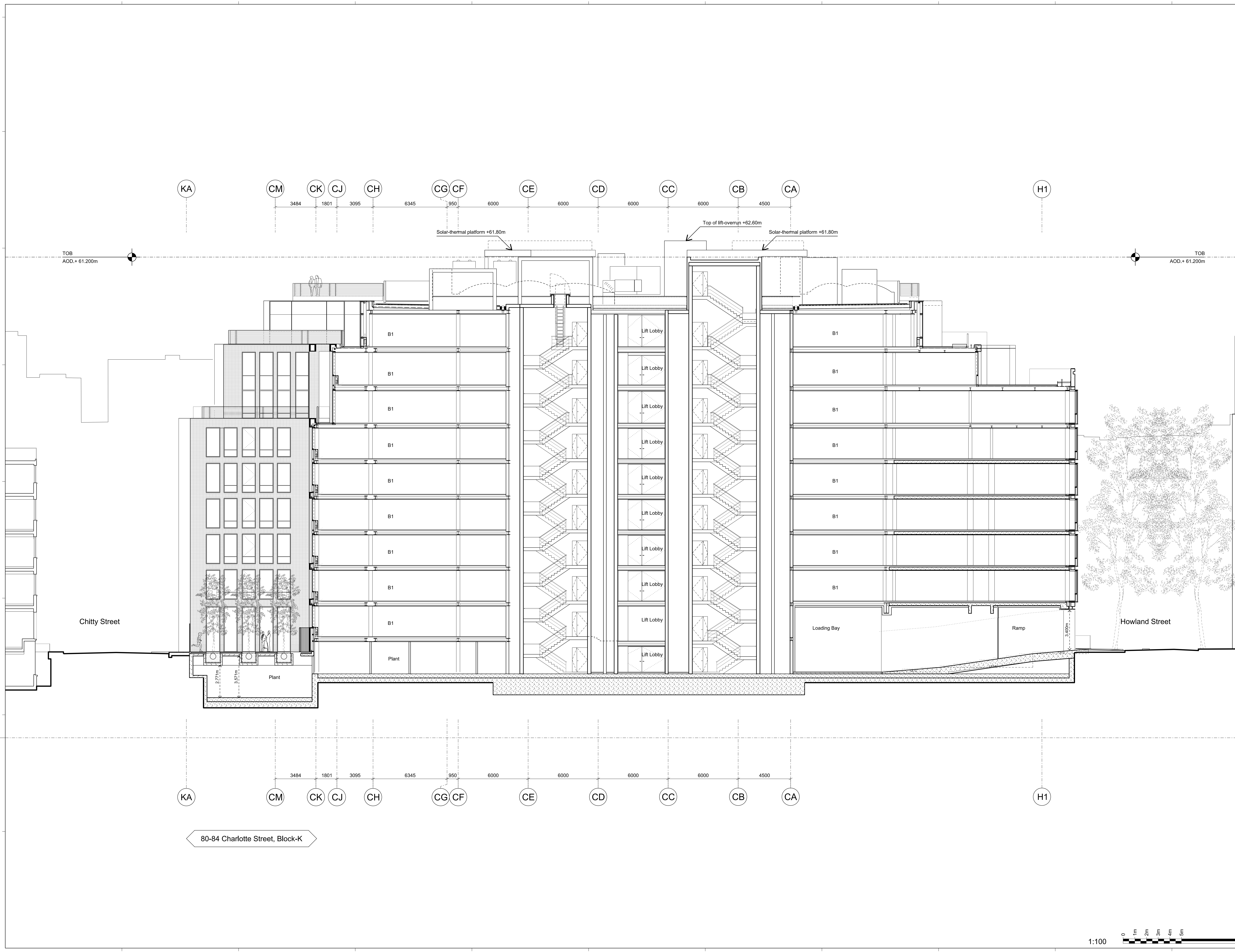


Project  
80 Charlotte Street

Drawing Title  
Detail 07  
EWS-110, 111  
New Chitty Street Facade  
(10-15 Chitty St)

Scale 1:50 Paper Size @A0 Date 12.12.12

Project No.	Draw No.	Rev No.
0825	P3130	02



- General Notes
1. Dimensions are in millimetres unless stated otherwise.
  2. Levels are in metres AOD unless stated otherwise.
  3. Dimensions govern. Do not scale off drawing.
  4. All dimensions to be verified on site before proceeding.
  5. All discrepancies to be notified in writing to Make Limited.
- © Make Limited 2014

- NOTES:
1. All new and retained existing structure (walls, columns and downstands beams) to be confirmed by Structural Engineer.
  2. All plant areas and services risers (sizes, locations, and routes) to be confirmed by Mechanical Engineer.
  3. Changes to the envelope from the consented planning scheme are to be reviewed and confirmed by Planning Consultant.
  4. Client to confirm Ground and Lower Ground retail strategy. Planning consent for LG/GF A1 retail limited to a maximum of 2,499sq.m. with A3 Use on Howland/Whitfield St corner.
  5. Refer to M&E consultant report for current M&E retail allowance.
  6. VRF's to perimeter of LG/GF are required if used as office.
  7. Access strategy to Ground and Lower Ground floors from street level is to be developed based on Use type and space planning.
  8. Part-M & DDA compliance (disabled toilets, ramps) to be reviewed by access consultant.
  9. Cleaning & maintenance to be reviewed (atrium, facade) by building maintenance consultant.
  10. Existing structure based on Anup original design drawings & PCA Survey (2010).
  11. New Structure based on engineers information.
  12. Terraces, landscaping, park, roof plant, and residential layouts illustrative, refer to separate reports.
  13. Additional terraces and changes to atrium to be confirmed by planning authority.
  14. Acoustic performance to be confirmed by acoustic consultant.

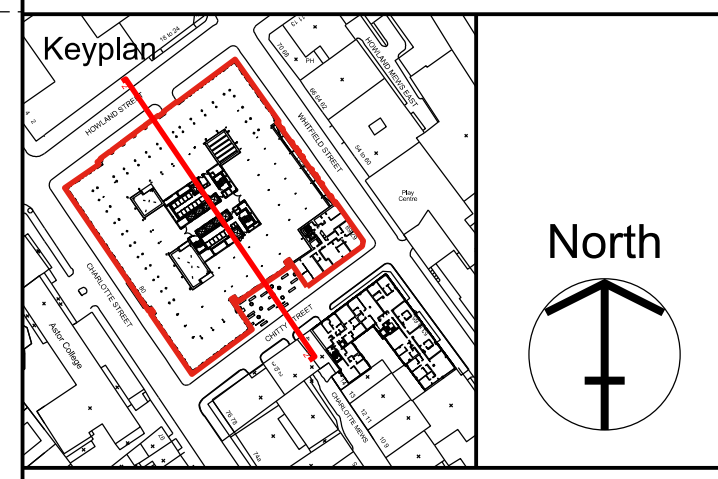
NOTE: Any areas measured from these plans by a quantity surveyor, relate to the likely areas of the building at the current stage of the design. Any decisions to be made on the basis of these predictions, whether as to project viability, pre-setting, lease agreement or the like should include due allowance for the increases and decreases inherent in the design development and building processes.

03	13/03/15	Discharge of Conditions	MT
02	09/09/14	Section 73 Roof Terrace	MT
01	07/02/13	Discharge of Conditions	MT
00	12/12/12	Discharge of Conditions	MT
Rev	Date	Reason For Issue	Chk

**FOR PLANNING**  
DRAWING STATUS

**make**  
13 Fitzroy Street,  
London, W1T 4BQ  
tel +44 (0) 20 7636 5151  
fax +44 (0) 20 7636 5252  
info@makearchitects.com  
www.makearchitects.com

Client  
**Derwent London**  
West London and Suburban  
Property Investments Ltd.  
W1S 2ER



Project  
**80 Charlotte Street**

Drawing Title  
**Architectural GA**  
Section S-2  
(Pocket-park elevation)

Scale 1:100    Paper Size @A0    Date 12.12.12

Project No.	Draw No.	Rev No.
0825	P2211	03

80-84 Charlotte Street, Block-K

