

Document name: **328CITE/HA CON3**

Submission date: **18/09/2015**

Sample panels of materials to be used in the external surfaces of the development.

(A) Facing Brickwork	page 01
(B) Oxid Copper cladding	page 02
(C) Zinc standing seam roof	page 03
(D) Fibre Cement roof slate tiles	page 04
(E) Glazing & Lintels	page 05
(F) Timber joinery	page 06

(A) FACING BRICKWORK



Company: **PETERSEN TEGL** as indicated in Application Approved 2014/2833/P

(A1) **D72** as indicated in Application Approved 2014/2833/P



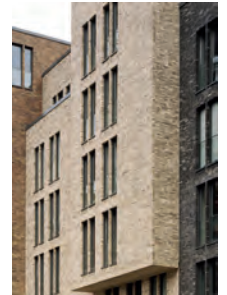
D72 (see real sample)



Hafen City
(Hamburg, Germany)



Police Headquarters, Roskilde
(Roskilde, Denmark)



Metropol Dock,
(Hamburg, Germany)

(A2) **D98** as indicated in Application Approved 2014/2833/P



D98 (see real sample)



Fiedrich Paulsen 1
(Niebüll, Germany)

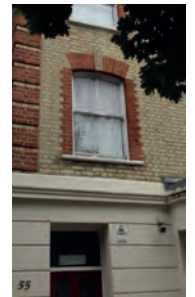


Fiedrich Paulsen 2
(Niebüll, Germany)

Pointing: colour as shown on real sample panel
type **Raked** as shown on the panel sample



Face-bond: **Flemish bond** as existing in the area, see pictures below



Face-bond of the surrounding buildings

NOTE: See panels 1 & 2 for the location on the elevations for this project.

B OXID COPPER CLADDING (Copper Brass indicated in Approved Application 2014/2833/P, best colour/ finished option to suit elevation shown is oxid copper -bronze look-)

Company: **KME**
THE EVOLUTION OF COPPER



Copper Oxid (see real sample)



St George's Church, Tuffnell Park
(London, England)



Ecclesbourne Apartments, Islington
(London, England)

Face-bond as shown on the drawings in Application Approved 2014/2833/P:
A300 Rev D / A301 Rev E / A302 Rev D / A400 Rev D / A401 Rev D / A402 Rev D



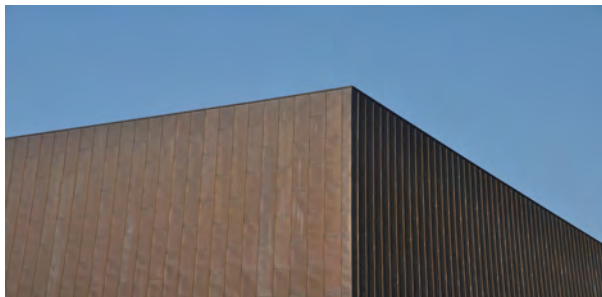
Part of South Elevation A300 Rev D



Part of West Elevation A301 Rev E



Part of North Elevation A302 Rev D



Copper Box Arena
(London, England)



Ecclesbourne Apartments, Islington
(London, England)



NOTE: See panels 1 & 2 for the location on the elevations for this project.

Ⓒ ZINC STANDING SEAM ROOF as indicated in Approved Application 2014/2833/P

Company: **RHEINZINK®** (see real sample)



Private Residence
(Srch, Czech Republic)

Private House Dom K
(Bratislava, Slovak Republic)

Colour: **Blue Grey** (see real sample)

Face-bond as shown on the drawings in Approved Application 2014/2833/P: A301 RevE/
A303 RevD/ A304 RevD/ A305 RevD/ A401 RevD/ A403 RevD/ A404 RevD/ A405 RevD



Part of West Elevation A301

Part of East Elevation A303

Part of North Elevation A304

Part of South Elevation A305



Private House Dom K
(Bratislava, Slovak Republic)

Cranbrook Junior School
(Australia)

Case bifamiliari Stocher Lee
(Rancate, Switzerland)

NOTE: See panels 1 & 2 for the location on the elevations for this project.

① **FIBRE CEMENT ROOF SLATE TILES** as indicated on the drawings submitted in the Approved Application 2014/2833/P

Company:  **MarleyEternit**

Product: **Garsdale Fibre Cement Slate** (see real sample)



Garsdale Gibre Cement Slate (see real sample)

Face-bond as shown on the drawings in Approved Application 2014/2833/P:
A400 Rev D / A401 Rev D / A402 Rev D / A403 Rev D / A404 Rev D



Part of South Elevation A400



Private House Barnoldby Road
(Grimsby, England)



Social Housing
(Perth, Scotland)

NOTE: See panels 1 & 2 for the location on the elevations for this project.

(E) **GLAZING** painted (powder coated/ anonized) thin framed aluminium as indicated in the *Design and Access Statement* by Dmfk document in Approved Application 2014/2833/P

Company: **FINELINE** or similar



Brick House
(Aldeburgh, England)



Le Portelet
(Island of Guernsey, England)

Colour: **B2 Anonized Colour** (see real sample)
close to RAL 6014

(E1) **BRICK LINTEL** as shown on the drawings in Approved Application 2014/2833/P:
A401 Rev D / A403 Rev D



bricks on end showing
stretcher face

Brick on edge face-bond



Part of Elevation A401



Part of Elevation A403



Pointing as D98 Petersen TEGL

Face-bond: **BOE (brick on edge)** as shown on above drawings

Pointing: as D98 pointing shown in page 01 in this document

(E2) **CAST STONE** cill, head+cill and window surrounds as shown on
A400 Rev D in Approved Application 2014/2833/P

Company:



Colour: **Portland** (see real sample)



Part of South Elevation A400

NOTE: See panels 1 & 2 for the location on the elevations for this project.

F TIMBER JOINERY : fences + gates in boundary wall

Company: **BLUMSOM**
TIMBER CENTRE .com

Colour/type: **Red Cedar** (see real sample)



Red Cedar (see real sample)



Example of Red Cedar Fence

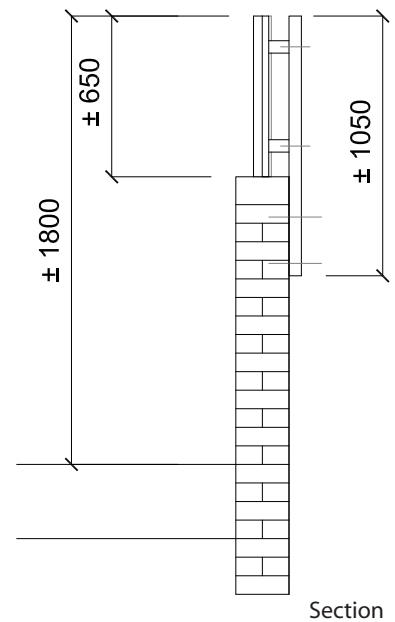
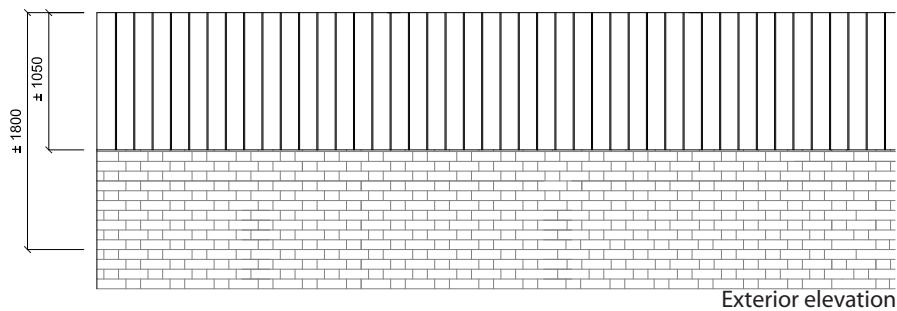
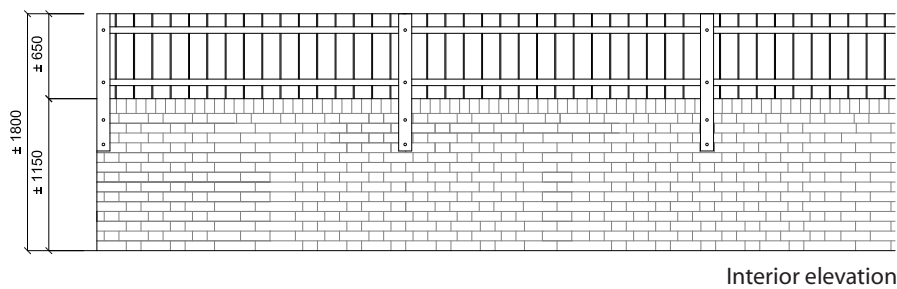
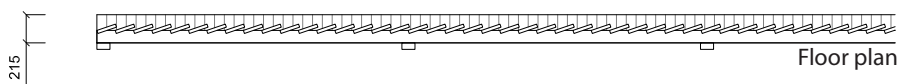


Example of Red Cedar Gate 1



Example of Red Cedar Gate 2

FENCE: design proposed/ typical



NOTE: See panels 1 & 2 for the location on the elevations for this project.