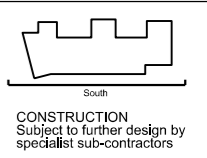




A4030 South Elevation

- General Notes:**
- G1 For file and G&S setting out refer to AMR43000
 - G2 All dimensions to be checked on site
 - G3 Any discrepancies between drawings to be reported to the Architect immediately.
 - G4 All levels are shown relative datum (AOD) (D430)
New Levels are shown thus: (D430)
Existing Levels are shown thus: EX-20.345
Retained Existing Levels:
 - G5 Use Square Dimensions only. Do not scale from drawings. IF IN DOUBT, ASK.
 - G6 Refer to Structural Engineers drawings for all structural and services information.
 - G7 For services see the Design Drawings and Specifications
 - G8 For elements of work subject to Contractor's Design, this drawing is indicative of the level & performance requirements only. The Contractor is responsible for the detailed design and coordination of the installation within the parameters defined in the specification, design drawings, contract terms and contract documents.
 - G9 Room numbers are shown thus: (R1)
 - G10 Door(D) & Window(W) References are shown thus: (W1)
 - G11 Clear height is shown thus: (C1)
 - G12 Floor level is shown thus: (F1)
 - G13 Floor levels are shown thus: (F1)
 - G14 Setting Out Points shown thus: (S1)
 - G15 Refer to AMR43000 for T Sheet references, and to AMR43002 for Architectural Specifications.
 - G16 **Building Regulations:** Plans are subject to Building Control Approval
 - G17 Fire Hazard strategy is subject to Fire Authority Approval
 - G18 Fire Hazard strategy is subject to Fire Authority Approval
 - G19 Fire Hazard strategy is subject to Fire Authority Approval
 - G20 Fire Hazard strategy is subject to Fire Authority Approval
 - G21 Fire Hazard strategy is subject to Fire Authority Approval
 - G22 Fire Hazard strategy is subject to Fire Authority Approval
 - G23 Fire Hazard strategy is subject to Fire Authority Approval
 - G24 Fire Hazard strategy is subject to Fire Authority Approval
 - G25 Fire Hazard strategy is subject to Fire Authority Approval
 - G26 Fire Hazard strategy is subject to Fire Authority Approval
 - G27 Fire Hazard strategy is subject to Fire Authority Approval
 - G28 Fire Hazard strategy is subject to Fire Authority Approval
 - G29 Fire Hazard strategy is subject to Fire Authority Approval
 - G30 Fire Hazard strategy is subject to Fire Authority Approval
 - G31 Fire Hazard strategy is subject to Fire Authority Approval
 - G32 Fire Hazard strategy is subject to Fire Authority Approval
 - G33 Fire Hazard strategy is subject to Fire Authority Approval
 - G34 Fire Hazard strategy is subject to Fire Authority Approval
 - G35 Fire Hazard strategy is subject to Fire Authority Approval
 - G36 Fire Hazard strategy is subject to Fire Authority Approval
 - G37 Fire Hazard strategy is subject to Fire Authority Approval
 - G38 Fire Hazard strategy is subject to Fire Authority Approval
 - G39 Fire Hazard strategy is subject to Fire Authority Approval
 - G40 Fire Hazard strategy is subject to Fire Authority Approval
 - G41 Fire Hazard strategy is subject to Fire Authority Approval
 - G42 Fire Hazard strategy is subject to Fire Authority Approval
 - G43 Fire Hazard strategy is subject to Fire Authority Approval
 - G44 Fire Hazard strategy is subject to Fire Authority Approval
 - G45 Fire Hazard strategy is subject to Fire Authority Approval
 - G46 Fire Hazard strategy is subject to Fire Authority Approval
 - G47 Fire Hazard strategy is subject to Fire Authority Approval
 - G48 Fire Hazard strategy is subject to Fire Authority Approval
 - G49 Fire Hazard strategy is subject to Fire Authority Approval
 - G50 Fire Hazard strategy is subject to Fire Authority Approval
 - G51 Fire Hazard strategy is subject to Fire Authority Approval
 - G52 Fire Hazard strategy is subject to Fire Authority Approval
 - G53 Fire Hazard strategy is subject to Fire Authority Approval
 - G54 Fire Hazard strategy is subject to Fire Authority Approval
 - G55 Fire Hazard strategy is subject to Fire Authority Approval
 - G56 Fire Hazard strategy is subject to Fire Authority Approval
 - G57 Fire Hazard strategy is subject to Fire Authority Approval
 - G58 Fire Hazard strategy is subject to Fire Authority Approval
 - G59 Fire Hazard strategy is subject to Fire Authority Approval
 - G60 Fire Hazard strategy is subject to Fire Authority Approval
 - G61 Fire Hazard strategy is subject to Fire Authority Approval
 - G62 Fire Hazard strategy is subject to Fire Authority Approval
 - G63 Fire Hazard strategy is subject to Fire Authority Approval
 - G64 Fire Hazard strategy is subject to Fire Authority Approval
 - G65 Fire Hazard strategy is subject to Fire Authority Approval

Parapet	+50.725
Roof SSL	+41.520
L04 FFL	+34.650
L03 FFL	+25.950
L02 FFL	+19.250
L01 FFL	+12.550
L00 FFL	+5.850
L-01 Lower Duplex FFL	+2.950
L-01 Basement FFL	-2.950



CONSTRUCTION
Subject to further design by specialist sub-contractors

Work Package	Cost Check	Info/Meeting	Tender	Contract	Construction	Date	Rev	Description	Approved By	Date	Rev	Description	Approved By	Date	Rev	Description
						26.10.13	A	Issue 0119 - General update and issue to Eurodesk for cost check								
						27.11.2013	B	Memo 0145 - Issue of updated Eurodesk's requirements to Eurodesk								
						02.12.2013	B	Memo 0146 - Revised Eurodesk's requirements to Eurodesk								
						08/01/2014	C	Memo 0147 - Issue for Memo: Eurodesk's requirements								
						17.02.2014	D	Memo 0148 - Update and revision of requirements								
						03.05.2014	E	Issue for JBA Director Risk Vets - Movement of JBA								
						03.05.2014	F	Memo 0149 - Revised Eurodesk's requirements								
						23.05.2014	G	Memo 0150 - Revised Eurodesk's requirements, add garage entrance, add garage entrance wall, and pier between G, H and I								

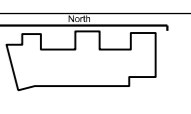


A4031 North Elevation

General Notes:

- G1 For file and G41 setting out refer to A4031-3000
- G2 All dimensions to be checked on site
- G3 Any discrepancies between drawings to be reported to the Architect immediately.
- G4 All levels are shown relative datum (AOD) D0116
EX-20,345
New Levels are shown thus:
Existing Levels are shown thus:
Retained Existing Levels:
- G5 Use Square Dimensions only. Do not scale from drawings. IF IN DOUBT, ASK.
- G6 Refer to Structural Engineers drawings for all structural and services information.
- G7 For services see the Design Drawings and Specifications
- G8 For elements of work subject to Contractor's Design, this drawing is indicative of the detail & performance requirements only. The Contractor is responsible for the detailed design and coordination of the installation within the parameters defined in the specification, design drawings, contract terms and contract documents.
- G9 Room numbers are shown thus:
G10 Door(D) & Window(W) References are shown thus:
- G11 Clear Height is shown thus:
(Rounded) Room to (Rounded) soffit:
- G12 Floor Reference shown thus:
- G13 References are shown thus:
- G14 Setting Out Points shown thus: D01
D02
- G15 Refer to A4031-3000 for T Sheet references, and to A4031-3000 for Architectural Specifications.
- G16 Building Regulations: Plans are subject to Building Control Approval
- G17 Fire Hazard: Fire strategy is subject to Fire Authority Approval
- G18 SBC (S8) measures are under development. Details of security measures include, but are not limited to:
- Alarm system: subject to the tenant's accommodation
- CCTV: subject to the tenant's accommodation
- Entrance door: subject to the tenant's accommodation
- Access control: subject to the tenant's accommodation
- Fire prevention: subject to the tenant's accommodation
- Security measures: subject to the tenant's accommodation
- G19 CDM: Full compliance to be achieved across entirety of project.
- G20 CDM: CDM requirements under review.
- G21 LTH: LTH details under review.
- G22 External Lighting: Location to be determined.
- G23 Details: Detail design, construction and coordination with MEP engineer (MEP) shall be subject to their approval.
- G24 Landscaping: Coordination in progress with landscape architect.
- G25 External Lighting: External lighting is subject to further development. A contractor to install and test all external requirements.
- G26 Waterproofing: Waterproofing detail and interfaces are under development.
- G27 Design: Details to be developed in Stage E
- G28 Management and graphics: Stationery and specialist information to be developed.
- G29 LPH Planning Conditions: (Subject to Planning Conditions) in progress and subject to approval by LPH.
- G30 External Lighting: Location & type to be coordinated with MEP engineer.
- G31 External Lighting: Details to be developed in Stage E
- G32 External Lighting: Details to be developed in Stage E
- G33 External Lighting: Details to be developed in Stage E
- G34 External Lighting: Details to be developed in Stage E
- G35 External Lighting: Details to be developed in Stage E
- G36 External Lighting: Details to be developed in Stage E
- G37 External Lighting: Details to be developed in Stage E
- G38 External Lighting: Details to be developed in Stage E
- G39 External Lighting: Details to be developed in Stage E
- G40 External Lighting: Details to be developed in Stage E
- G41 External Lighting: Details to be developed in Stage E
- G42 External Lighting: Details to be developed in Stage E
- G43 External Lighting: Details to be developed in Stage E
- G44 External Lighting: Details to be developed in Stage E
- G45 External Lighting: Details to be developed in Stage E
- G46 External Lighting: Details to be developed in Stage E
- G47 External Lighting: Details to be developed in Stage E
- G48 External Lighting: Details to be developed in Stage E
- G49 External Lighting: Details to be developed in Stage E
- G50 External Lighting: Details to be developed in Stage E
- G51 External Lighting: Details to be developed in Stage E
- G52 External Lighting: Details to be developed in Stage E
- G53 External Lighting: Details to be developed in Stage E
- G54 External Lighting: Details to be developed in Stage E
- G55 External Lighting: Details to be developed in Stage E
- G56 External Lighting: Details to be developed in Stage E
- G57 External Lighting: Details to be developed in Stage E
- G58 External Lighting: Details to be developed in Stage E
- G59 External Lighting: Details to be developed in Stage E
- G60 External Lighting: Details to be developed in Stage E
- G61 External Lighting: Details to be developed in Stage E
- G62 External Lighting: Details to be developed in Stage E
- G63 External Lighting: Details to be developed in Stage E
- G64 External Lighting: Details to be developed in Stage E
- G65 External Lighting: Details to be developed in Stage E
- G66 External Lighting: Details to be developed in Stage E
- G67 External Lighting: Details to be developed in Stage E
- G68 External Lighting: Details to be developed in Stage E
- G69 External Lighting: Details to be developed in Stage E
- G70 External Lighting: Details to be developed in Stage E
- G71 External Lighting: Details to be developed in Stage E
- G72 External Lighting: Details to be developed in Stage E
- G73 External Lighting: Details to be developed in Stage E
- G74 External Lighting: Details to be developed in Stage E
- G75 External Lighting: Details to be developed in Stage E
- G76 External Lighting: Details to be developed in Stage E
- G77 External Lighting: Details to be developed in Stage E
- G78 External Lighting: Details to be developed in Stage E
- G79 External Lighting: Details to be developed in Stage E
- G80 External Lighting: Details to be developed in Stage E
- G81 External Lighting: Details to be developed in Stage E
- G82 External Lighting: Details to be developed in Stage E
- G83 External Lighting: Details to be developed in Stage E
- G84 External Lighting: Details to be developed in Stage E
- G85 External Lighting: Details to be developed in Stage E
- G86 External Lighting: Details to be developed in Stage E
- G87 External Lighting: Details to be developed in Stage E
- G88 External Lighting: Details to be developed in Stage E
- G89 External Lighting: Details to be developed in Stage E
- G90 External Lighting: Details to be developed in Stage E
- G91 External Lighting: Details to be developed in Stage E
- G92 External Lighting: Details to be developed in Stage E
- G93 External Lighting: Details to be developed in Stage E
- G94 External Lighting: Details to be developed in Stage E
- G95 External Lighting: Details to be developed in Stage E
- G96 External Lighting: Details to be developed in Stage E
- G97 External Lighting: Details to be developed in Stage E
- G98 External Lighting: Details to be developed in Stage E
- G99 External Lighting: Details to be developed in Stage E
- G100 External Lighting: Details to be developed in Stage E

- Parapet FFL +50.725
- Roof SSI +51.725
- L04 FFL +52.500
- L03 FFL +51.500
- L02 FFL +50.500
- L01 FFL +49.500
- L00 FFL +28.500
- L-01 Lower Duplex FFL +25.500
- L-01 Basement FFL +22.500



CONSTRUCTION
Subject to further design by specialist sub-contractors

Work Package	Cost Check	Info/Review	Issue	Contract	Construction	Date	Revision	Description	Approved By	Date	Rev.	Revision	Approved By	Date	Rev.	Revision
						26.10.13	A	General update and issue to Burocell for cost check	[Signature]				[Signature]			
						27.11.2013	B	Memo 0145 - Issue of updated Energy Report for Construction	[Signature]				[Signature]			
						04.12.2013	C	Memo 0145 - Revised Energy Report	[Signature]				[Signature]			
						08.01.2014	D	Memo 0145 - Issue for Memo: frame enclosing information	[Signature]				[Signature]			
						17.02.2014	E	Memo 0145 - North and movement joints added	[Signature]				[Signature]			
						03.05.2014	F	Issue for 180 Brickwork Brick Vents / Movement Joints	[Signature]				[Signature]			
						03.05.2014	G	Memo 0145 - Revised movement Joints locations	[Signature]				[Signature]			

Copyright Hopkins Architects Partnership LLP. Registered in England number 0658976. Registered address: 27 Broadway Terrace London NW1 6LG. Use Figure Dimensions Only. All Dimensions to be checked on site. Original Drawing Size A2