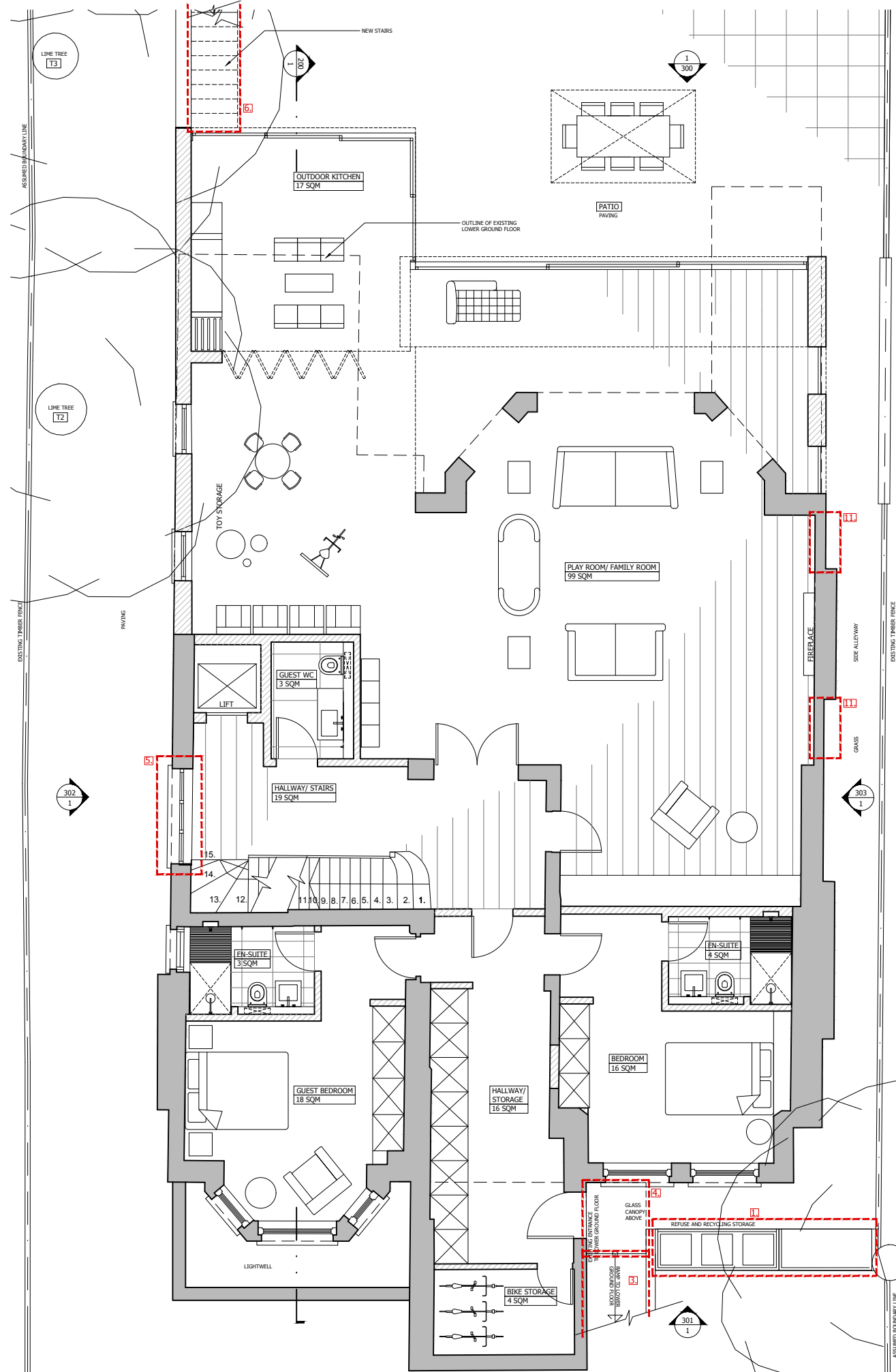


1 PROPOSED BASEMENT
1:50



2 PROPOSED LOWER GROUND FLOOR
1:50

GENERAL NOTES:
DO NOT SCALE FROM THIS DRAWING
ALL DIMENSIONS TO BE CHECKED ON SITE
ANY OMISSIONS OR DISCREPANCIES TO BE REPORTED TO THE ARCHITECT IMMEDIATELY
IF IN DOUBT ASK

EXISTING WALLS
PROPOSED WALLS

ALTERATION TO PREVIOUS APPROVED DEVELOPMENT
REFER TO 9FIT-PLANNING STATEMENT 151217

1. Relocation of refuse and recycling storage as indicated on site plan
3. Changing steps in front garden to ramp to Lower Ground Floor
4. Addition of glass canopy above side entrance in Lower Ground Floor
5. Changing side entrance on South side to window and omitting steps
6. Addition of external staircase to rear garden
14. Reducing size of basement

PLANNING AMENDMENT	17.12.15	P13
PLANNING AMENDMENT	28.09.15	P12
MATERIAL AMENDMENTS	17.02.15	P11
MATERIAL AMENDMENTS	14.08.14	P10
REVISED NON MATERIAL AMENDMENT	17.05.14	P9
NON MATERIAL AMENDMENT	16.05.14	P8
REVISION PLANNING APPLICATION	31.07.13	P7
PLANNING APPLICATION	19.04.13	P6
CHANGE OF USE APPLICATION	28.11.12	P1

COMMENTS	DATE	REV.
----------	------	------

REVISIONS

Finkernagel Ross Architects

Unicom House Third Floor
221-222 Shoreditch High Street
London E1 6PJ
Tel: 020 7377 5114
Fax: 020 7426 0992

PROJECT
**9 FITZJOHN'S AVENUE
LONDON NW3 5JY**

**PROPOSED BASEMENT &
LOWER GROUND FLOOR**

SCALE
1:50@A1, 1:100@A3
DATE
17.12.15

DRAWING NO
9FIT-101
REVISION
P13

