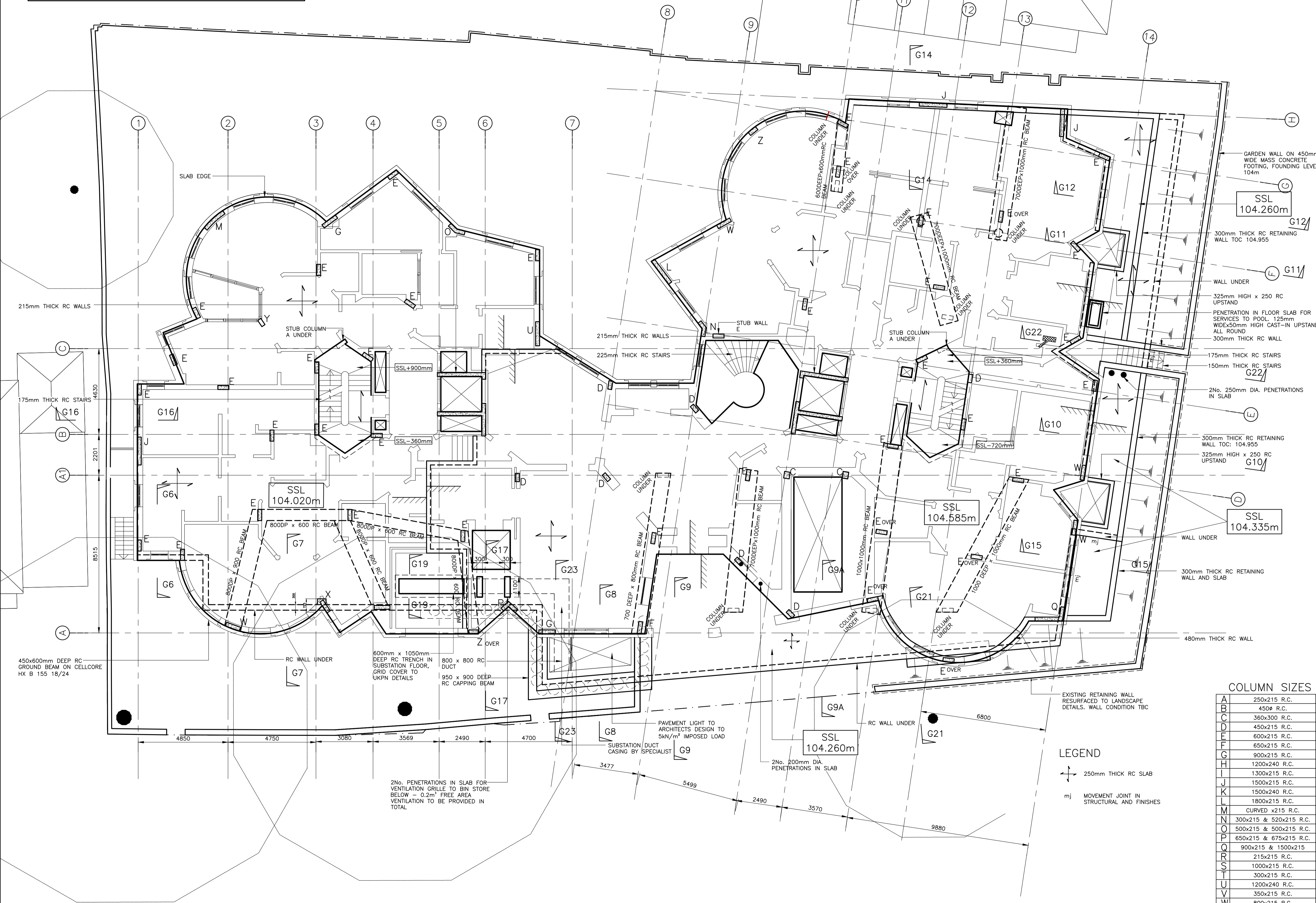


THE CONTRACTOR SHALL BE RESPONSIBLE FOR ALL TEMPORARY SUPPORTS AND RESPONSIBLE FOR STABILITY OF THE STRUCTURE DURING THE WORKS

CONTRACTOR TO PROP TRANSFER BEAMS FOR A PERIOD NOT LESS THAN 60 DAYS AFTER CONCRETE IS POURED

SUB CONTRACTOR/SPECIALIST DESIGN ELEMENTS

1. ALL TEMPORARY WORKS
2. DESIGN OF ALL BALUSTRADES AND STAIRCASES EXCEPT IN SITU CONCRETE
3. DESIGN OF ALL GLAZING
4. DESIGN OF ALL TANKING

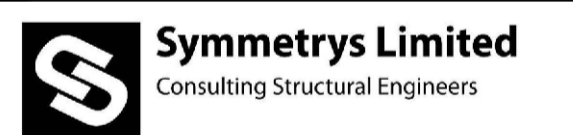


Notes

1. THIS DRAWING IS TO BE READ IN CONJUNCTION WITH ALL RELEVANT ARCHITECTS & ENGINEERS DRAWINGS AND SPECIFICATIONS
2. DO NOT SCALE FROM THIS DRAWING
3. PLEASE REFER TO ARCHITECTS DRAWINGS FOR ALL INSULATION AND VENTILATION DETAILS. DAMP PROOF COURSES AND ALL TANKING DETAILS
4. CONTRACTOR SHOULD ALSO REVIEW MECHANICAL ENGINEER DRAWINGS FOR EXACT LOCATION OF SERVICE PENETRATION PRIOR TO CUTTING
5. ALL DIMENSIONS IN mm. DO NOT SCALE FROM THE DRAWINGS
6. THE CONTRACTOR SHALL BE RESPONSIBLE FOR ALL TEMPORARY SUPPORTS AND RESPONSIBLE FOR STABILITY OF THE STRUCTURE DURING THE WORKS
7. SERVICE PENETRATION 250mm SQUARE OR SMALLER ARE NOT SHOWN. REFER TO M & E ENGINEERS DRAWINGS
8. CONTRACTOR TO PROP TRANSFER BEAMS FOR A PERIOD NOT LESS THAN 60 DAYS AFTER CONCRETE IS POURED

Rev	Date	By	Amendments
P9	23.10.15	JNS	STAGE E ISSUE
P8	02.10.15	SAV	STAGE E ISSUE
P7	23.09.15	SAV	STAGE D ISSUE
P6	30.07.15	RM	STAGE D ISSUE - AMENDMENTS CLOUDED
P5	28.07.15	SAV	STAGE D ISSUE
P3	22.05.15	JNS	STAGE D ISSUE
P2	08.05.15	JNS	STAGE D ISSUE
P1	28.04.15	JNS	PRELIMINARY ISSUE

Drawing Status: STAGE E



6 The Courtyard, Lynton Road
London, N16 8SL
T: 020 8340 4041
W: www.symmetrys.com
E: info@symmetrys.com

Job Title:
**79 FITZJOHNS AVENUE
HAMPSTEAD
LONDON, NW3**

Drawing Title:
**GROUND FLOOR
PLAN**

Job No.	Drawing No.	Revision
2014052	04	P9

Scales: 1:100 AT A1 Original Size A1
Drawn By: JNS Date: APRIL 2015 Checked: RT