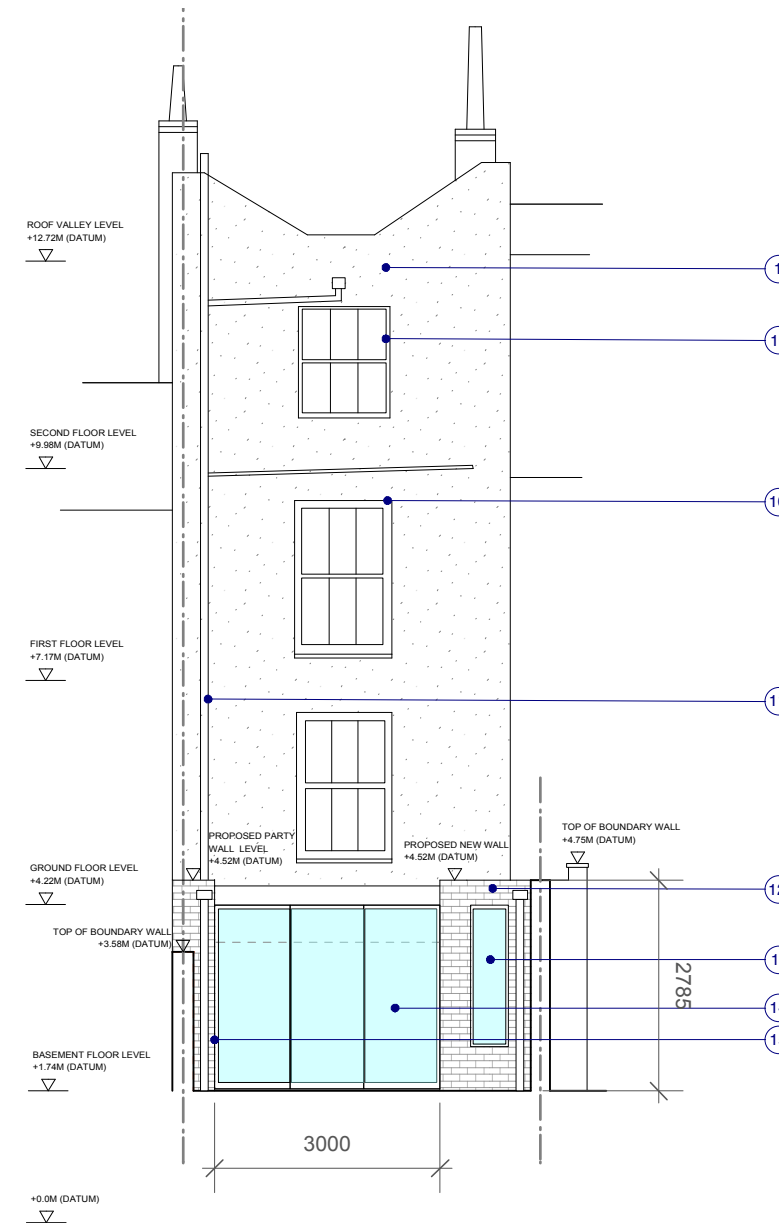


1 PROPOSED FRONT ELEVATION  
SCALE 1:100@A3



2 PROPOSED REAR ELEVATION  
SCALE 1:100@A3



#### Notes:

All construction to comply with all relevant and current Buildings regulations and British Standards.  
All dimensions are to be checked on site by the contractor prior to construction. Any queries are to be notified to the author of the drawing.  
For all structural works information refer to Structural Engineers drawings.

#### Key:

--- Line of existing to be removed or altered

- 1 General render reinstatement works to repair areas of cracking.
- 2 Retain and repair existing windows
- 3 Replace window with timber frame sash window to match georgian bar details of neighbouring properties
- 4 Addition of a fanlight atop main entrance to enhance Georgian character of house and match neighbouring property
- 5 New six panelled wooden door with painted finish
- 6 Repair external steps to provide even risers and replace asphalt covering with black and white mosaic tile finish
- 7 Replace low wall with cast iron railing to match neighbouring properties
- 8 Replace old window in lightwell with timber frame sash window to match georgian features of the house and neighbouring properties. Window to have metal security rods in front. See elevation no. 4 on drawing no. 1502-P-200 for elevation of lightwell
- 9 New metal staircase, painted black -access to lightwell similar to neighbouring properties
- 10 Replace window with new timber frame sash window to match georgian bar details of neighbouring properties
- 11 Re-route drainage pipe to flow to one side
- 12 White painted brick wall
- 13 New timber framed window 500mm x 1850mm
- 14 New 3no Glass sliding panels with metal frame -painted black
- 15 New masonry wall built alongside party wall

Rev P1 - 18.12.15 Issued for Planning

TRELLIK  
DESIGN  
STUDIO



UNIT 1A HAZELWOOD, GOLBORNE GARDENS  
LONDON W10 5DT

T: +44 (0)7776 085694

E: HELLO@TRELLIKDESIGNSTUDIO.COM

W: WWW.TRELLIKDESIGNSTUDIO.COM

<b>Client:</b> EDOUARD & ANNE-SOPHIE	<b>Date Created:</b> SEPTEMBER 2015		
<b>Project:</b> 66 LEIGHTON ROAD			
<b>Drawing Title:</b> PROPOSED ELEVATIONS			
<b>Scale:</b> 1:100	<b>Revision Date:</b> 18.12.15		
<b>Drawing No:</b> 1502-P-120	<table><tr><td><b>Checked by:</b> NG</td><td><b>Revision:</b> P1</td></tr></table>	<b>Checked by:</b> NG	<b>Revision:</b> P1
<b>Checked by:</b> NG	<b>Revision:</b> P1		
DO NOT SCALE FROM DRAWING, ALL DIMS TO BE CHECKED ON SITE. REPORT OMISSIONS AND DISCREPANCIES TO THE ARCHITECT IMMEDIATELY			