

0 3 5 M



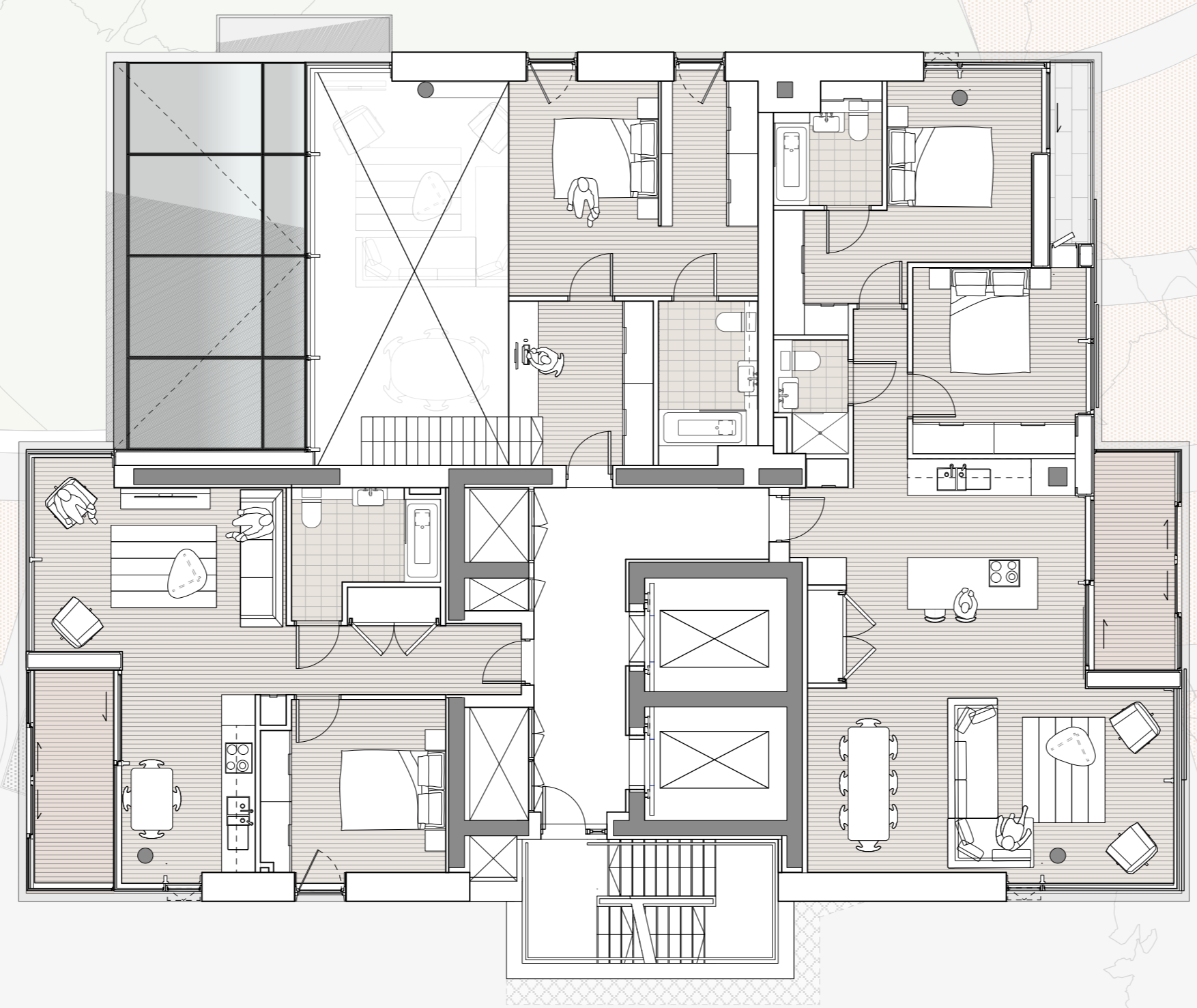
THIS DRAWING IS COPYRIGHT OF dRMM LIMITED.
 THE ORIGINAL HARD COPY OF THIS DRAWING HAS BEEN EXECUTED TO SCALE AND IS BASED ON AVAILABLE SURVEY INFORMATION. REPRODUCTION AND ELECTRONIC DISSEMINATION MAY RESULT IN DISTORTION AND REDUCTION OF DRAWING CONTENT. dRMM LIMITED TAKES NO RESPONSIBILITY FOR MEASUREMENTS OR SCALING TAKEN FROM ANY OTHER DRAWING THAN THE ORIGINAL HARD COPY ISSUED BY dRMM AND NO RELIANCE MAY BE PLACED ON SUCH DIMENSIONS. IF NO DIMENSION IS GIVEN, IT IS THE RESPONSIBILITY OF THE RECIPIENT TO ASCERTAIN THE DIMENSION SPECIFICALLY FROM THE ARCHITECT OR BY SITE MEASUREMENT. THE SCHED OF ALL STRUCTURAL & SERVICE ELEMENTS MUST ALWAYS BE CHECKED AGAINST THE RELEVANT ENGINEERS DRAWINGS. ANY OMISSIONS OR DISCREPANCIES BETWEEN DRAWING INFORMATION SHOULD BE BROUGHT TO THE ATTENTION OF THE CONTRACT ADMINISTRATOR.

CDM REGISTER: FLAGGED HAS ISSUES RELATING TO CONSTRUCTION DESIGN AND MANAGEMENT) TO BE ADDRESSED DURING DESIGN DEVELOPMENT. TO BE READ IN CONJUNCTION WITH DESIGN RISK REGISTER AND RESIDUAL RISK REGISTER.

ALL INTERNAL LAYOUTS ARE INDICATIVE ONLY.

- LANDSCAPE DESIGN SHOWN INDICATIVELY - REFER TO LANDSCAPE DRAWINGS
 - THE BACKGROUND AND CONTEXT, INCLUDING THE FRANCIS CRICK INSTITUTE IS SHOWN FOR ILLUSTRATIVE PURPOSES ONLY. THE ACDS ARE CORRECT BUT THE DRAWN FORM IS NOT BASED UPON SURVEY INFORMATION
 - TREES SHOWN INDICATIVELY WITH REGARD TO EXACT SIZE AND POSITION

NOTES
 - ALL PLANS ARE CUT AT 1500 AFFL



P03 PLANNING ISSUE

REVISION NOTES

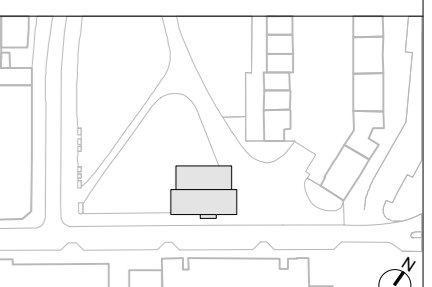
NO	DESCRIPTION	DATE

P03	PLANNING ISSUE	JLA	JST	30.11.15
P02	FINAL DRAFT PLANNING ISSUE	JLA	JST	03.11.15
P01	DRAFT PLANNING	VG	JST	23.10.15
00	DRAFT PLANNING	VG	JST	12.10.15

REVISION DESCRIPTION BY CHK/QA DATE

 dRMM Ltd
 de Rijke Harsh Norgan Architects
 Magdalen House • 136-140 Tooley St
 London SE1 2TU UK
 T +44 (0)20 7863 0777
 E mail@drrm.co.uk

SITE PLAN - KEY



AUTHOR
dRMM ARCHITECTS
TITLE
LEVEL 16 PLAN

PROJECT	SCALE	SIZE
BRILL PLACE	1:100	A2
DRAWING NO	1:200	A4
372-L16-208		REVISION
		P03