

THIS DRAWING IS COPYRIGHT OF dRMM LIMITED. THE ORIGINAL HAND COPY OF THIS DRAWING HAS BEEN EXECUTED TO SCALE AND IS CONSIDERED TO BE THE AUTHORITY FOR ANY REVISIONS OR CORRECTIONS. dRMM LIMITED TAKES NO RESPONSIBILITY FOR MEASUREMENTS OR SCALE FACTORS FROM ANY OTHER DRAWING THAN THE ORIGINAL HAND COPY ISSUED BY dRMM AND NO RELIANCE SHOULD BE PLACED ON SUCH MEASUREMENTS OR SCALE FACTORS. THE ARCHITECT OR BY SITE MEASUREMENT. THE SIZE OF ALL STRUCTURAL & SERVICE ELEMENTS MUST ALWAYS BE CHECKED AGAINST THE RELEVANT ENGINEERING DRAWINGS. ANY DISCREPANCIES OR DISCREPANCIES BETWEEN DRAWING INFORMATION SHOULD BE BROUGHT TO THE ATTENTION OF THE CONTRACT ADMINISTRATION. ALL INTERNAL LAYOUTS ARE INDICATIVE ONLY. CAM REGISTER FLAGGED HAS ISSUES RELATING TO CONSTRUCTION DESIGN AND CONSTRUCTION WITH DESIGN RISK REGISTER AND RESIDUAL RISK REGISTER. ALL INTERNAL LAYOUTS ARE INDICATIVE ONLY.

**FACADE MATERIALS**

**A** UNITSISED FRAMELESS CURTAIN WALLING SYSTEM WITH CIRCA 2000 DEEP GLASS RAINSCREEN FIXED TO OUTSIDE. RAL 5011 STEEL BLUE CERAMIC FRIT TO REAR (FACE 2) OF RAINSCREEN GLASS. GLASS REVEALS AROUND EDGES (TOP, SIDES AND SOFFITS) OF OVERALL RAINSCREEN ZONE TO MATCH

**B** UNITSISED FRAMELESS GLASS CURTAIN WALLING SYSTEM WITH EXTRA CLEAR GLASS.

**C** UNITSISED FRAMELESS GLASS CURTAIN WALLING SYSTEM WITH EXTRA CLEAR GLASS OVER OPAQUE ELEMENTS. SILVER CERAMIC FRIT TO FACE 4

**D** UNITSISED FRAMELESS CURTAIN WALLING SYSTEM. DGL WITH EXTRA CLEAR GLASS OVER ANODISED UA150-2 FRAMES EXTERNALLY TO DOORS AND WINDOWS). ALSO AREAS OF ROOF GLAZING TO MATCH AS INDICATED. SOLID AREAS OF SLIM FRAME SYSTEM TO MATCH C

**E** FRAMELESS OUTWARD OPENING TOP HUNG WINDOW WITH EXTRA CLEAR GLASS. TRANSON AND FIXED GLAZED LOWER PANEL

**F** RECESSED INWARD OPENING SIDE VERTICALLY HUNG WINDOW WITH EXTERNAL GLAZED JULIETTE BALUSTRADE AND SATIN ANODISED ALUMINIUM CAPPING. REVEALS FROM RAL 5011 (STEEL BLUE) GLASS TO MATCH FINISH OF A (BLUE/BLACK ANODISED UA150-2 FRAMES EXTERNALLY) HEAD REVEAL FORMED WITH BLUE/BLACK ANODISED LOUVRE (UA150-2)

**G** SILVER METAL STANDING SEAM ROOF INCLUDING HIDDEN GUTTERS (SIMILAR TO THE ROOF COLOUR OF FRANCIS CRICK INSTITUTE)

**H** SATIN ANODISED ALUMINIUM (MECHANICAL/ELECTRICAL MOTORISED) SLIDING SOLAR SHADING SCREENS WITH BESPOKE 'DNA SAMPLING' PERFORATED PATTERN ON DUAL TRACK (UA NATURAL 100A)

**J** EXTERNAL VERTICALLY CANTILEVERED LOW IRON GLASS BALUSTRADE WITH SATIN ANODISED CAPPING TO BALCONIES (1200mm HIGH)

**K** INTERNAL LOW IRON GLASS JULIETTE BALUSTRADE WITH SILVER SATIN ANODISED CAPPING TO SLIDING WINDOWS

**L** FULL HEIGHT FRAMELESS CURTAIN WALLING SYSTEM WITH 1 SECTION STEEL MULLION STICKS & CLEAR LOW IRON GLASS AND ANTI-REFLECTIVE COATING. INTEGRATED FRAMELESS DOORS TO GROUND FLOOR INCLUDING AUTOMATIC ACCESS CONTROLLED SLIDING DOOR TO RESIDENTS' LOBBY WITH MATCHING GLASS. BESPOKE GLASS MANIFESTATIONS AS INDICATED. AREAS OF BACKFRIT TO MATCH C AS TAGGED L1

**M** BALCONY AND WINTERGARDEN SOFFITS: WHITE INTERLOCKED POWDERCOATED ALUMINIUM PANELS WITH HIDDEN FIXINGS

**N** GROUND FLOOR SOFFIT: SILVER BRIGHTENED ANODISED ALUMINIUM INTERLOCKING PANELS WITH HIDDEN FIXINGS - FORMING SCULPTED SOFFIT (UA NATURAL 100A)

**P** ANODISED EXTRUDED ALUMINIUM C-CHANNEL TO RECEIVE SHUTTER TRACKS WHERE APPLICABLE. VARIOUS FINISHES REQUIRED. TYPICALLY BRIGHTENED SILVER (UA NATURAL 100A) WHERE THE CHANNEL SITS BETWEEN TWO BLUE/BLACK RAINSCREEN ELEMENTS - COLOUR TO BE ANODISED UA 150-2 DARK BLUE. C-CHANNEL PROFILE ALSO VARIES: WHERE CHANNEL SITS BETWEEN TWO RAINSCREEN ELEMENTS - TO BE AN L-CHANNEL AS A CONTINUATION OF THE C-CHANNEL TOP FLANGE - REFER TO DETAILS

**Q** UNITSISED FULL HEIGHT EXTERNALLY GLAZED CURTAIN WALLING SYSTEM TO WINTERGARDENS WITH FIXED AND SLIDING PANELS. AREAS OF ROOF GLAZING TO MATCH AS INDICATED ROOF WINDOW TO HAVE A WHITE DOT MATRIX CERAMIC FRIT (2-3MM) ALSO INCLUDING INTERNAL CANTILEVERED LOW IRON GLASS BALUSTRADES WITH SATIN ANODISED ALUMINIUM CAPPING (1200mm HIGH)

**R** PROJECTING BAY WITH SINGLE PIECE OF EXTRA CLEAR GLASS TO FRONT WITH BLUE/BLACK BACKFRIT TO EDGE AS INDICATED. GLASS RAINSCREEN TO SOFFIT, ROOF AND SIDES INCLUDING SOLID OPENING VENT TO MATCH A

**S** FRAMELESS CURTAIN WALLING SYSTEM TO STAIRCASE. TRANSLUCENT PHOTOVOLTAIC PANELS LAMINATED INTO GLAZING ON SOUTHERN FACE OF STAIRCASE ENCLOSURE (INDICATED BY HORIZONTAL HATCH). AT GROUND FLOOR, GLASS TO BE LOW IRON TO MATCH L (NON HATCHED AREA)

**T** METAL STAIRCASE RAL 1016 SULPHUR YELLOW

**U** CONCRETE COLUMNS WITH FINE SMOOTH VISUAL GRADE FINISH

**NOTES**

- UNITSISED DESIGN SHOWN INDICATIVELY - REFER TO UNITSISED ARCHITECT DRAWINGS
- THE BACKGROUND AND CONTENT INCLUDING THE FRANCHISE CRICK INSTITUTE IS SHOWN FOR ILLUSTRATIVE PURPOSES ONLY. THE ARCHITECT AND CONTRACTOR TO BE RESPONSIBLE FOR VERIFYING ALL INFORMATION
- TREES SHOWN INDICATIVELY AND NOT SHOWN IN FRONT OF BUILDING FOR CLARITY

NO	DESCRIPTION	DATE
P03	PLANNING ISSUE	30.11.15
P02	FINAL PLANNING DRAFT SUBMISSION	03.11.15

REV	DESCRIPTION	BY	CHK	QA	DATE
P03	PLANNING ISSUE	WH	PM		30.11.15
P02	FINAL PLANNING DRAFT SUBMISSION	WH	PM		03.11.15

**AUTHOR**  
dRMM ARCHITECTS

**TITLE**  
EAST BAY ELEVATION

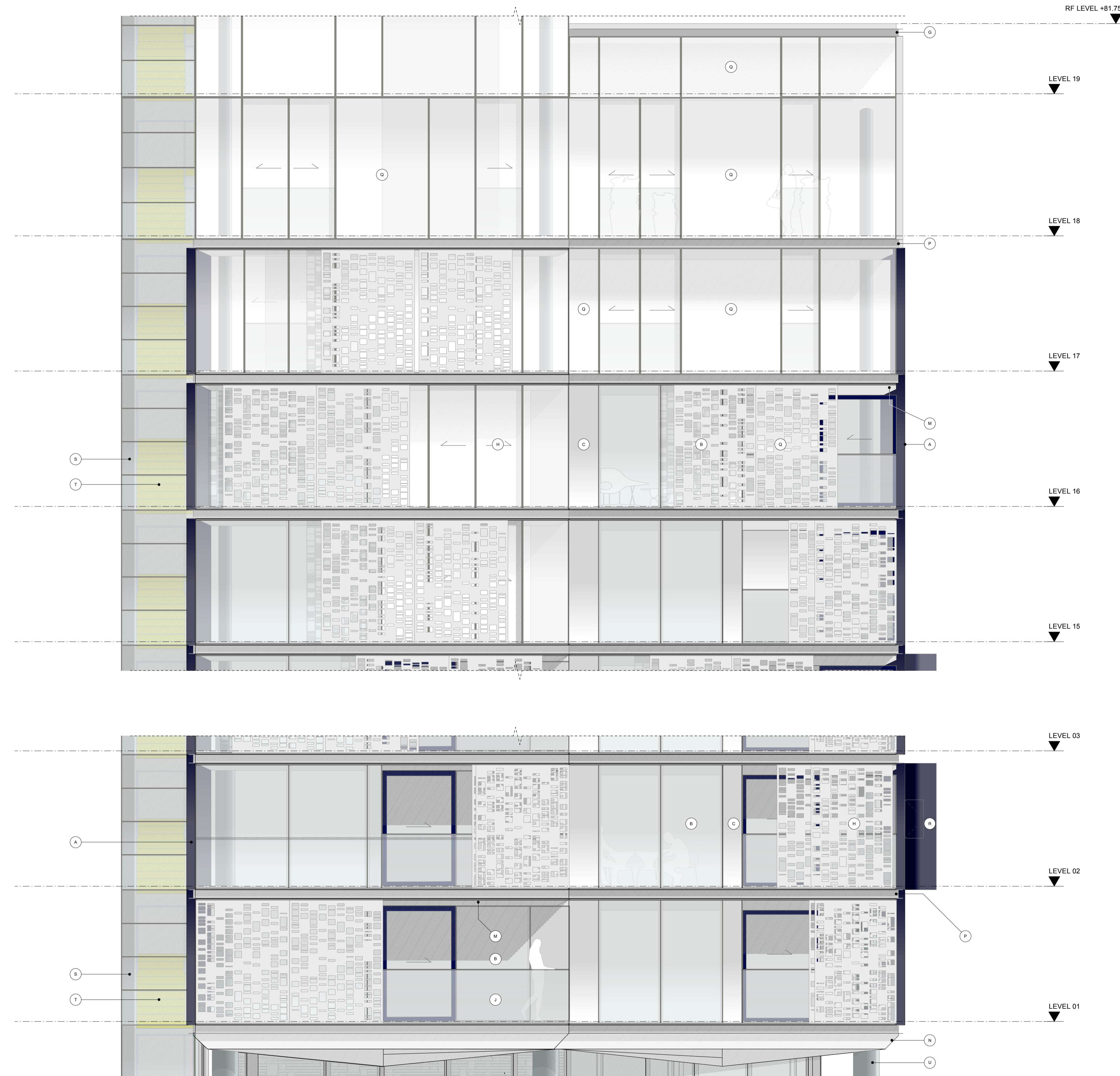
**PROJECT**  
BRILL PLACE

**SCALE**  
1:50

**SIZE**  
A1

**DRAWING NO**  
372-ELE-451

**REVISION**  
P03



**1 EAST BAY ELEVATION**  
SCALE 1:50