

THIS DRAWING IS COPYRIGHT © OF dRMM LIMITED. THE ORIGINAL HARD COPY OF THIS DRAWING HAS BEEN EXECUTED TO SCALE AND IS CONSIDERED TO BE THE AUTHORITY FOR ANY REVISIONS OR CORRECTIONS. dRMM LIMITED SHALL NOT BE RESPONSIBLE FOR ANY REVISIONS OR CORRECTIONS MADE BY ANY OTHER DRAWING OR BY THE ARCHITECT OR BY THE CONTRACTOR. THE ARCHITECT OR BY THE CONTRACTOR SHALL BE RESPONSIBLE FOR ANY REVISIONS OR CORRECTIONS MADE BY ANY OTHER DRAWING OR BY THE CONTRACTOR. THE ARCHITECT OR BY THE CONTRACTOR SHALL BE RESPONSIBLE FOR ANY REVISIONS OR CORRECTIONS MADE BY ANY OTHER DRAWING OR BY THE CONTRACTOR.

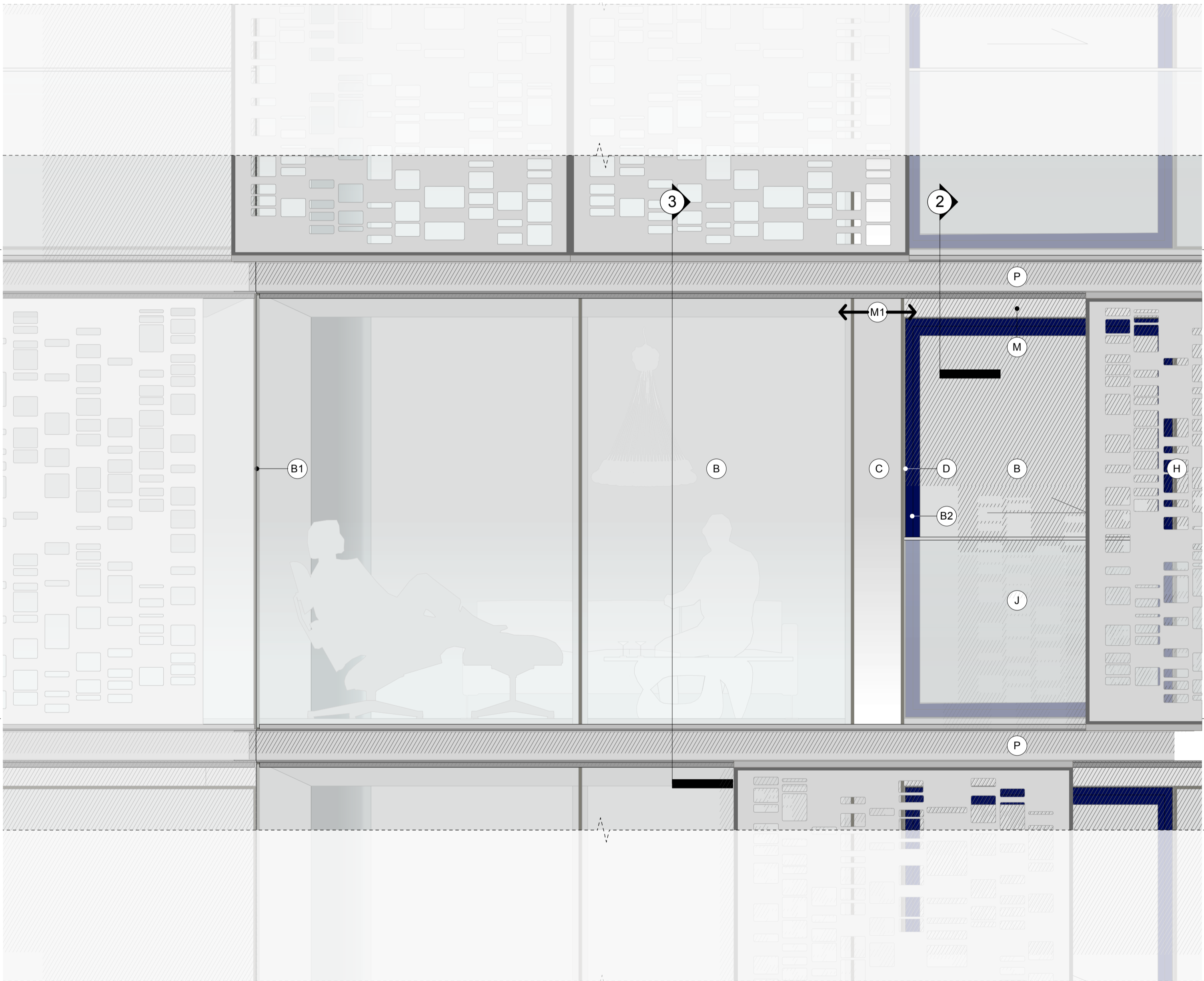
B
UNITISED FRAMELESS GLASS CURTAIN WALLING SYSTEM INCLUDING SLIDING DOOR SYSTEM WITH LEVEL THRESHOLD TO BALCONIES (BLUE/BLACK ANODISED UA150-2 FRAMES EXTERNALLY TO DOORS AND WINDOWS)

B1
GLASS TO GLASS JOINT - NO MULLION ON CORNER

B2
BLUE/BLACK ANODISED SLIDING DOOR FRAME UA150-2

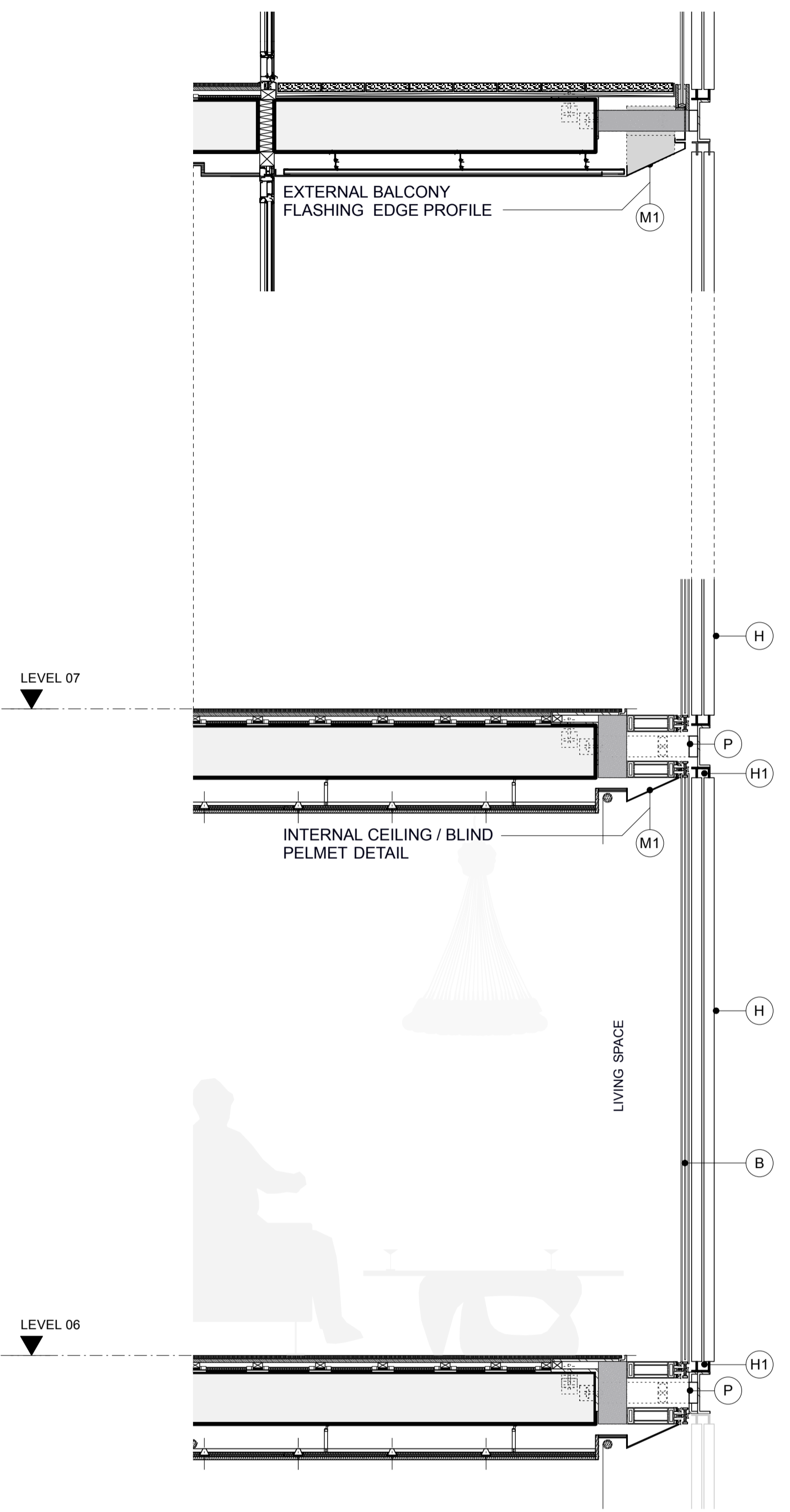
M
BALCONY AND WINTERGARDEN SOFFITS: WHITE INTERLOCKED POWDERCOATED ALUMINIUM PANELS WITH HIDDEN FIXINGS

M1
SOFFIT TO HAVE A CIRCA 25 DEGREE CHAMFERED EDGE. PROFILE OF CHAMFER SHOULD MATCH THE PROFILE OF THE INTERNAL CEILING PELMET DETAIL TO ENSURE A CONSISTENT EXTERNAL APPEARANCE



1 TYPICAL EAST / WEST FACADE ELEVATION
SCALE 1:20

2 TYPICAL EAST / WEST FACADE SECTION
SCALE 1:20



3 TYPICAL EAST / WEST FACADE SECTION
SCALE 1:20

FACADE MATERIALS

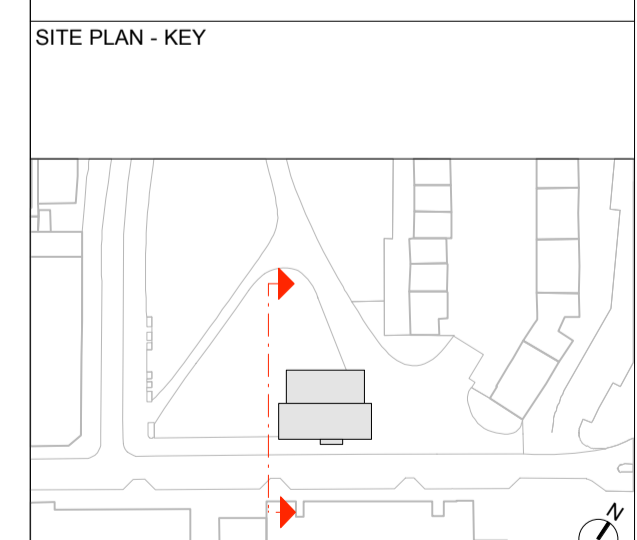
- A** UNITISED FRAMELESS CURTAIN WALLING SYSTEM WITH CIRCA 2000 DEEP GLASS RAINSCREEN FIXED TO OUTSIDE RAL 5011 STEEL BLUE CERAMIC FRIT TO REAR (FACE 2) OF RAINSCREEN GLASS. GLASS REVEALS AROUND EDGES (TOP, SIDES AND SOFFITS) OF OVERALL RAINSCREEN ZONE TO MATCH
- B** UNITISED FRAMELESS GLASS CURTAIN WALLING SYSTEM WITH EXTRA CLEAR GLASS.
- WHERE INDICATED, INCLUDES SLIM FRAME SLIDING DOOR SYSTEM WITH LEVEL THRESHOLD TO BALCONIES & WINTERGARDENS (BLUE/BLACK ANODISED UA150-2 FRAMES EXTERNALLY TO DOORS AND WINDOWS). ALSO AREAS OF ROOF GLAZING TO MATCH AS INDICATED. SOLID AREAS OF SLIM FRAME SYSTEM TO MATCH C
- C** UNITISED FRAMELESS GLASS CURTAIN WALLING SYSTEM WITH EXTRA CLEAR GLASS OVER OPAQUE ELEMENTS. SILVER CERAMIC FRIT TO FACE 4
- D** UNITISED FRAMELESS CURTAIN WALLING SYSTEM, DGG WITH EXTRA CLEAR GLASS OVER BESPOKE SILVER PATTERNED CERAMIC FRIT TO FACE 2 AND SOLID SILVER CERAMIC FRIT TO FACE 4 (BOTH TO MATCH C). PATTERN ON FACE 2 TO REFLECT DINA DESIGN OF SOLAR SHADING SCREENS
- E** FRAMELESS OUTWARD OPENING TOP HUNG WINDOW WITH EXTRA CLEAR GLASS. TRANSOM AND FIXED GLAZED LOWER PANEL
- F** RECESSED INWARD OPENING SIDE VERTICALLY HUNG WINDOW WITH EXTERNAL GLAZED JULIETTE BALUSTRADE AND SATIN ANODISED ALUMINIUM CAPPING. REVEALS FROM RAL 5011 (STEEL BLUE) GLASS TO MATCH FINISH OF A (BLUE/BLACK ANODISED UA150-2 FRAMES EXTERNALLY) HEAD REVEAL FORMED WITH BLUE/BLACK ANODISED LOUVRE (UA150-2)
- G** SILVER METAL STANDING SEAM ROOF INCLUDING HIDDEN GUTTERS (SIMILAR TO THE ROOF COLOUR OF FRANCIS CRICK INSTITUTE)
- H** SATIN ANODISED ALUMINIUM (MECHANICAL/ELECTRICAL MOTORISED) SLIDING SOLAR SHADING SCREENS WITH BESPOKE 'DNA SAMPLING' PERFORATED PATTERN ON DUAL TRACK (UA NATURAL 100A)
- J** EXTERNAL VERTICALLY CANTILEVERED LOW IRON GLASS BALUSTRADE WITH SATIN ANODISED CAPPING TO BALCONIES (1200mm HIGH)
- K** INTERNAL LOW IRON GLASS JULIETTE BALUSTRADE WITH SILVER SATIN ANODISED CAPPING TO SLIDING WINDOWS
- L** FULL HEIGHT FRAMELESS CURTAIN WALLING SYSTEM WITH SECTION STEEL MULLION STICKS & CLEAR LOW IRON GLASS AND ANTI-REFLECTIVE COATING. INTEGRATED FRAMELESS DOORS TO GROUND FLOOR INCLUDING AUTOMATIC ACCESS CONTROLLED SLIDING DOOR TO RESIDENTS' LOBBY WITH MATCHING GLASS. BESPOKE GLASS MANIFESTATIONS AS INDICATED. AREAS OF BACKFRIT TO MATCH C AS TAGGED L1
- M** BALCONY AND WINTERGARDEN SOFFITS: WHITE INTERLOCKED POWDERCOATED ALUMINIUM PANELS WITH HIDDEN FIXINGS
- N** GROUND FLOOR SOFFIT: SILVER BRIGHTENED ANODISED ALUMINIUM INTERLOCKING PANELS WITH HIDDEN FIXINGS - FORMING SCULPTED SOFFIT (UA NATURAL 100A)
- P** ANODISED EXTRUDED ALUMINIUM C-CHANNEL TO RECEIVE SHUTTER TRACKS WHERE APPLICABLE. VARIOUS FINISHES REQUIRED. TYPICALLY BRIGHTENED SILVER (UA NATURAL 100A) WHERE THE CHANNEL SITS BETWEEN TWO BLUE/BLACK RAINSCREEN ELEMENTS - COLOUR TO BE ANODISED UA 150-2 DARK BLUE. C-CHANNEL PROFILE ALSO VARIES: WHERE CHANNEL SITS BETWEEN TWO RAINSCREEN ELEMENTS - TO BE AN L-CCHANNEL AS A CONTINUATION OF THE C-CHANNEL TOP FLANGE - REFER TO DETAILS
- Q** UNITISED FULL HEIGHT EXTERNALLY FRAMELESS, INTERNAL SLIM FRAMED LOW-IRON GLAZED CURTAIN WALLING SYSTEM TO WINTERGARDENS WITH FIXED AND SLIDING PANELS. AREAS OF ROOF GLAZING TO MATCH AS INDICATED ROOF WINDOW TO HAVE A WHITE DOT MATRIX CERAMIC FRIT (2-3MM) ALSO INCLUDING INTERNAL CANTILEVERED LOW IRON GLASS BALUSTRADES WITH SATIN ANODISED ALUMINIUM CAPPING (1200mm HIGH)
- R** PROJECTING BAY WITH SINGLE PIECE OF EXTRA CLEAR GLASS TO FRONT WITH BLUE/BLACK BACKFRIT TO EDGE AS INDICATED. GLASS RAINSCREEN TO SOFFIT, ROOF AND SIDES INCLUDING SOLID OPENING VENT TO MATCH A
- S** FRAMELESS CURTAIN WALLING SYSTEM TO STAIRCASE, TRANSLUCENT PHOTOVOLTAIC PANELS LAMINATED INTO GLAZING ON SOUTHERN FACE OF STAIRCASE ENCLOSURE (INDICATED BY HORIZONTAL HATCH). AT GROUND FLOOR, GLASS TO BE LOW IRON TO MATCH L (NON HATCHED AREA)
- T** METAL STAIRCASE RAL 1016 SULPHUR YELLOW
- U** CONCRETE COLUMNS WITH FINE SMOOTH VISUAL GRADE FINISH

NOTES

- UNODIFIED DESIGN SHOWN INDICATIVELY. REFER TO UNODIFIED ARCHITECT DRAWINGS
- THE BACKGROUND AND CONTEXT INCLUDING THE FRANCIS CRICK INSTITUTE IS SHOWN FOR ILLUSTRATIVE PURPOSES ONLY. THE ARCHITECT AND CONTEXT FOR THE DRAWING FORM IS NOT BASED UPON SURVEY INFORMATION
- THESE SHOWN INDICATIVELY AND NOT SHOWN IN FRONT OF BUILDING FOR CLARITY

REV	DESCRIPTION	BY	CHK	QA	DATE
P02	PLANNING ISSUE	WH	PM		30.11.15
P01	FINAL PLANNING DRAFT SUBMISSION	WH	PM		03.11.15

AUTHOR
dRMM ARCHITECTS
TITLE
TYPICAL EAST & WEST FACADE DETAIL



PROJECT	SCALE	SIZE
BRILL PLACE	1:20	A1
DRAWING NO	1:40	A3
372-ELE-459		REVISION
		P02