

THIS DRAWING IS COPYRIGHT OF dRMM LIMITED.  
 THE ORIGINAL HANDCOPY OF THIS DRAWING HAS BEEN EXECUTED TO SCALE AND IS  
 DISSEMINATED AS SUCH. ANY REPRODUCTION OR ALTERATION OF THIS DRAWING WITHOUT THE  
 WRITTEN PERMISSION OF dRMM LIMITED IS STRICTLY PROHIBITED. dRMM LIMITED  
 ACCEPTS NO RESPONSIBILITY FOR REQUIREMENTS OR SCALE CHANGES FROM ANY  
 OTHER DRAWINGS THAN THE ORIGINAL HANDCOPY ISSUED BY dRMM AND NO RELIANCE  
 SHOULD BE PLACED ON THE DIMENSIONS OR DIMENSION LINES SHOWN IN THIS  
 DRAWING. THE ARCHITECT OR BY SITE MEASUREMENT. THE SIGNATURE OF ALL STRUCTURAL & SERVICE  
 ELEMENTS MUST BE CHECKED AGAINST THE RELEVANT ENGINEERING DRAWINGS.  
 ANY DISCREPANCY OR DISCREPANCIES BETWEEN DRAWING INFORMATION SHOULD BE  
 BROUGHT TO THE ATTENTION OF THE CONTRACT ADMINISTRATION.  
 CAM REGISTER FLAGGED HAS ISSUES RELATING TO CONSTRUCTION DESIGN AND  
 CONSTRUCTION WITH DESIGN RISK REGISTER AND RESIDUAL RISK REGISTER.  
 ALL INTERNAL LAYOUTS ARE INDICATIVE ONLY.  
 - LANDSCAPE DESIGN SHOWN INDICATIVELY - REFER TO LANDSCAPE ARCHITECT DRAWINGS  
 - THE BACKGROUND AND CONTEXT INCLUDING THE FRANCIS CRICK INSTITUTE IS SHOWN FOR ILLUSTRATIVE  
 PURPOSES ONLY. THE ARCHITECT HAS NOT CONDUCTED A SURVEY OF THE SITE.  
 - TREES SHOWN INDICATIVELY AND NOT SHOWN IN FRONT OF BUILDING FOR CLARITY

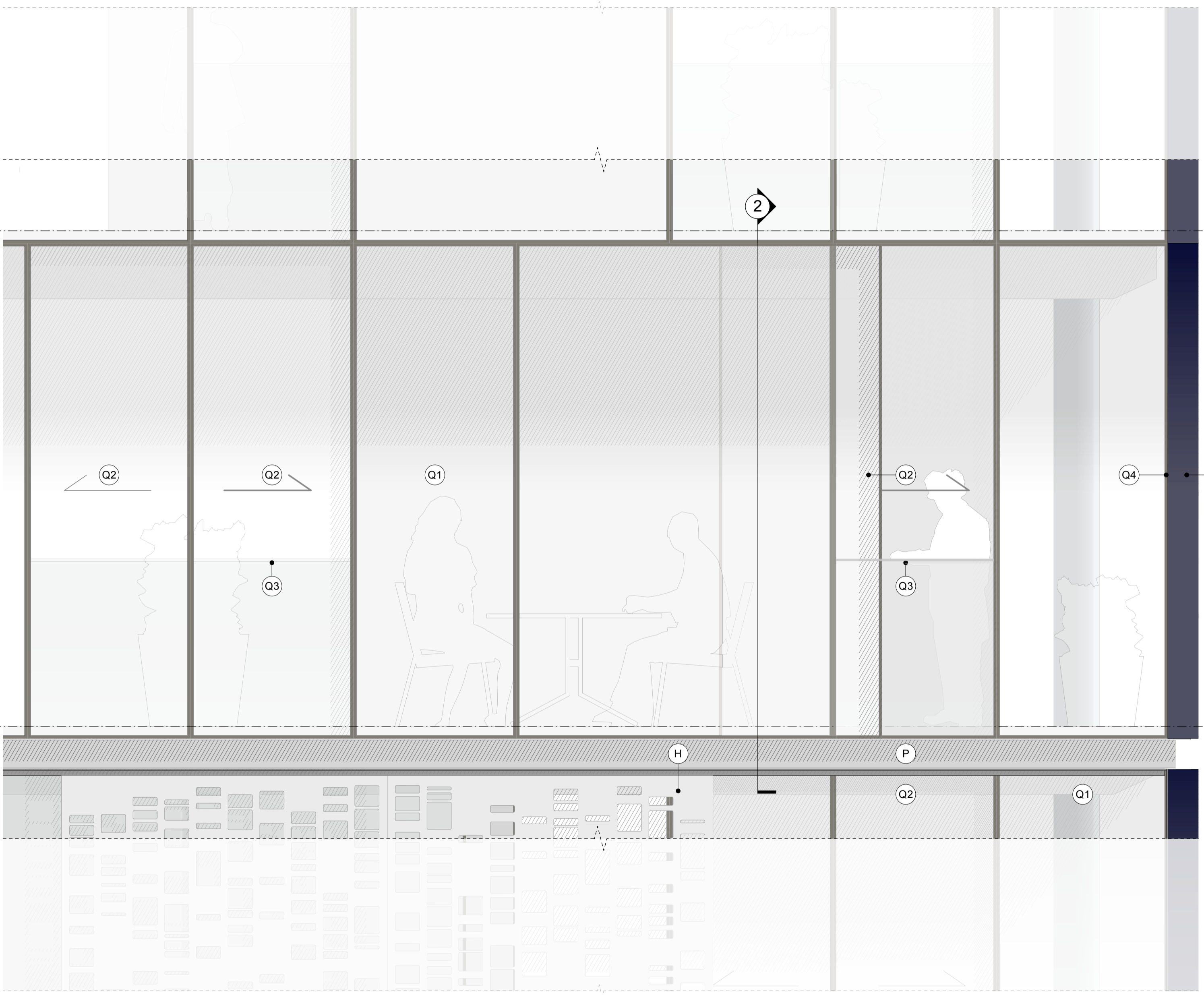
**Q**  
 UNITSISED FULL HEIGHT EXTERNALLY FRAMELESS, INTERNALLY  
 SLIM FRAMED LOW-IRON GLAZED CURTAIN WALLING SYSTEM  
 TO WINTERGARDENS WITH FIXED AND SLIDING ELEMENTS  
 INCLUDING INTERNAL CANTILEVERED GLASS BALUSTRADE  
 WITH SATIN ANODISED ALUMINIUM CAPPING

**Q1**  
 FULL HEIGHT FIXED ELEMENT

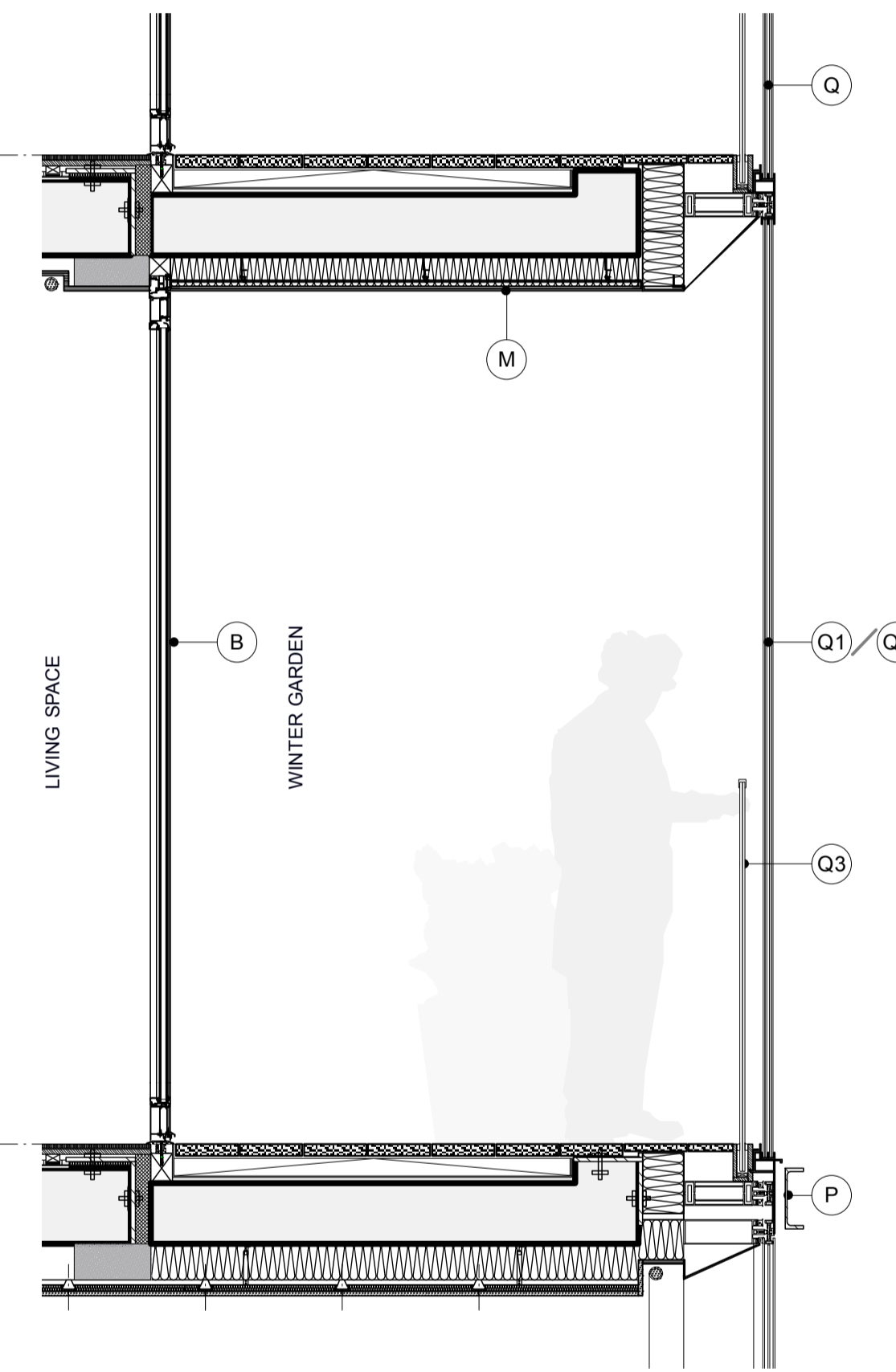
**Q2**  
 FULL HEIGHT SLIDING PANEL

**Q3**  
 CANTILEVERED CHANNEL FIXED GLASS JULIETTE  
 BALUSTRADE WITH SATIN ANODISED ALUMINIUM CAPPING

**Q4**  
 GLASS TO GLASS CORNER - NO CORNER MULLION. ON ALL  
 CORNERS OF WINTER GARDENS



**1** WINTER GARDEN ELEVATION  
 SCALE 1:20



**2** WINTER GARDEN SECTION  
 SCALE 1:20

**FACADE MATERIALS**

- A** UNITSISED FRAMELESS CURTAIN WALLING SYSTEM WITH CIRCA 200M DEEP GLASS RAINSCREEN FIXED TO OUTSIDE. RAL 5011 STEEL BLUE CERAMIC FRIT TO REAR (FACE 2) OF RAINSCREEN GLASS. GLASS REVEALS AROUND EDGES (TOP, SIDES AND SOFFITS) OF OVERALL RAINSCREEN ZONE TO MATCH
- B** UNITSISED FRAMELESS GLASS CURTAIN WALLING SYSTEM WITH EXTRA CLEAR GLASS.
- WHERE INDICATED, INCLUDES SLIM FRAME SLIDING DOOR SYSTEM WITH LEVEL THRESHOLD TO BALCONIES & WINTERGARDENS (BLUE/BLACK ANODISED UA150-2 FRAMES EXTERNALLY TO DOORS AND WINDOWS). ALSO AREAS OF ROOF GLAZING TO MATCH AS INDICATED. SOLID AREAS OF SLIM FRAME SYSTEM TO MATCH **C**
- C** UNITSISED FRAMELESS GLASS CURTAIN WALLING SYSTEM WITH EXTRA CLEAR GLASS OVER OPAQUE ELEMENTS. SILVER CERAMIC FRIT TO FACE 4
- D** UNITSISED FRAMELESS CURTAIN WALLING SYSTEM, DGU WITH EXTRA CLEAR GLASS OVER BESPOKE SILVER PATTERNED CERAMIC FRIT TO FACE 2 AND SOLID SILVER CERAMIC FRIT TO FACE 4 (BOTH TO MATCH **C**). PATTERN ON FACE 2 TO REFLECT 'DNA' DESIGN OF SOLAR SHADING SCREENS
- E** FRAMELESS OUTWARD OPENING TOP HUNG WINDOW WITH EXTRA CLEAR GLASS. TRANSOM AND FIXED GLAZED LOWER PANEL
- F** RECESSED INWARD OPENING SIDE VERTICALLY HUNG WINDOW WITH EXTERNAL GLAZED JULIETTE BALUSTRADE AND SATIN ANODISED ALUMINIUM CAPPING. REVEALS FROM RAL 5011 (STEEL BLUE) GLASS TO MATCH FINISH OF **A** (BLUE/BLACK ANODISED UA150-2 FRAMES EXTERNALLY) HEAD REVEAL FORMED WITH BLUE/BLACK ANODISED LOUVRE (UA150-2)
- G** SILVER METAL STANDING SEAM ROOF INCLUDING HIDDEN GUTTERS (SIMILAR TO THE ROOF COLOUR OF FRANCIS CRICK INSTITUTE)
- H** SATIN ANODISED ALUMINIUM (MECHANICAL/ELECTRICAL MOTORISED) SLIDING SOLAR SHADING SCREENS WITH BESPOKE 'DNA SAMPLING' PERFORATED PATTERN ON DUAL TRACK (UA NATURAL 100A)
- J** EXTERNAL VERTICALLY CANTILEVERED LOW IRON GLASS BALUSTRADE WITH SATIN ANODISED CAPPING TO BALCONIES (1200mm HIGH)
- K** INTERNAL LOW IRON GLASS JULIETTE BALUSTRADE WITH SILVER SATIN ANODISED CAPPING TO SLIDING WINDOWS
- L** FULL HEIGHT FRAMELESS CURTAIN WALLING SYSTEM WITH 1 SECTION STEEL MULLION STICKS & CLEAR LOW IRON GLASS AND ANTI-REFLECTIVE COATING. INTEGRATED FRAMELESS DOORS TO GROUND FLOOR INCLUDING AUTOMATIC ACCESS CONTROLLED SLIDING DOOR TO RESIDENTS' LOBBY WITH MATCHING GLASS. BESPOKE GLASS MANIFESTATIONS AS INDICATED. AREAS OF BACKFRIT TO MATCH **C** AS TAGGED **L1**
- M** BALCONY AND WINTERGARDEN SOFFITS: WHITE INTERLOCKED POWDERCOATED ALUMINIUM PANELS WITH HIDDEN FIXINGS
- N** GROUND FLOOR SOFFIT: SILVER BRIGHTENED ANODISED ALUMINIUM INTERLOCKING PANELS WITH HIDDEN FIXINGS - FORMING SCULPTED SOFFIT (UA NATURAL 100A)
- P** ANODISED EXTRUDED ALUMINIUM C-CHANNEL TO RECEIVE SHUTTER TRACKS WHERE APPLICABLE. VARIOUS FINISHES REQUIRED. TYPICALLY BRIGHTENED SILVER (UA NATURAL 100A) WHERE THE CHANNEL SITS BETWEEN TWO BLUE/BLACK RAINSCREEN ELEMENTS - COLOUR TO BE ANODISED UA 150-2 DARK BLUE. C-CHANNEL PROFILE ALSO VARIES. WHERE CHANNEL SITS BETWEEN TWO RAINSCREEN ELEMENTS - TO BE AN L-CHANNEL AS A CONTINUATION OF THE C-CHANNEL TOP FLANGE - REFER TO DETAILS
- Q** UNITSISED FULL HEIGHT EXTERNALLY FRAMELESS, INTERNAL SLIM FRAMED LOW-IRON GLAZED CURTAIN WALLING SYSTEM TO WINTERGARDENS WITH FIXED AND SLIDING PANELS. AREAS OF ROOF GLAZING TO MATCH AS INDICATED. ROOF WINDOW TO HAVE A WHITE DOT MATRIX CERAMIC FRIT (2-3MM) ALSO INCLUDING INTERNAL CANTILEVERED LOW IRON GLASS BALUSTRADES WITH SATIN ANODISED ALUMINIUM CAPPING (1200mm HIGH)
- R** PROJECTING BAY WITH SINGLE PIECE OF EXTRA CLEAR GLASS TO FRONT WITH BLUE/BLACK BACKFRIT TO EDGE AS INDICATED. GLASS RAINSCREEN TO SOFFIT, ROOF AND SIDES INCLUDING SOLID OPENING VENT TO MATCH **A**
- S** FRAMELESS CURTAIN WALLING SYSTEM TO STAIRCASE, TRANSLUCENT PHOTOVOLTAIC PANELS LAMINATED INTO GLAZING ON SOUTHERN FACE OF STAIRCASE ENCLOSURE (INDICATED BY HORIZONTAL HATCH). AT GROUND FLOOR, GLASS TO BE LOW IRON TO MATCH **L** (NON HATCHED AREA)
- T** METAL STAIRCASE RAL 1016 SULPHUR YELLOW
- U** CONCRETE COLUMNS WITH FINE SMOOTH VISUAL GRADE FINISH

**NOTES**

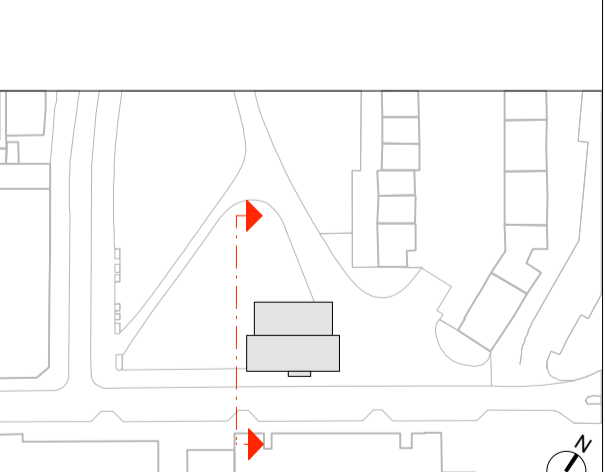
NO	DESCRIPTION	DATE
P02	PLANNING ISSUE	30.11.15
P01	FINAL PLANNING DRAFT SUBMISSION	03.11.15

REV	DESCRIPTION	BY	CHK	QA	DATE

-----  
 dRMM Ltd  
 de Rijke Nash Morgan Architects  
 -----  
 Magdalen House, 136-148 Tooley St  
 London SE3 2TU UK  
 T +44 (0)20 7803 0777  
 E mail@dRMM.co.uk  
 -----

**SITE PLAN - KEY**



**AUTHOR**  
 dRMM ARCHITECTS  
**TITLE**  
 WINTER GARDEN DETAIL

PROJECT	SCALE	SIZE
BRILL PLACE	1:20	A1
DRAWING NO	1:40	A3
372-ELE-457		REVISION
		P02