



**General Notes**

- Do not scale from this drawing. Refer to stated dimensions.
- All dimensions to be verified on site by the contractor, before proceeding, and such dimensions to be his responsibility.
- Report all drawing errors, omissions and discrepancies to Morrow + Lorraine Ltd.
- All stated areas on this drawing are approximate and to be treated as strictly indicative.
- Any Ordnance Survey mapping data in this drawing is used under license. Its use is strictly for the preparation of information for this project. Where used Ordnance Survey copyright acknowledgement must be displayed. At project completion all Ordnance Survey data supplied must be deleted and all paper copies destroyed.

| Rev | Date     | Reason For Issue      | Chk |
|-----|----------|-----------------------|-----|
| P01 | 26/06/15 | For planning approval | -   |

| LOCATION: |
|-----------|
|           |

**MORROW + LORRAINE**  
 MORROW + LORRAINE ARCHITECTS  
 27 MARGARET STREET LONDON W1W 8RY  
 T +44 (0)20 7580 8813 F +44 (0)20 7637 3328  
 INFO@MORROWLORRAINE.COM  
 WWW.MORROWLORRAINE.COM  
 MORROW + LORRAINE LTD REGISTERED IN ENGLAND NO.6802153

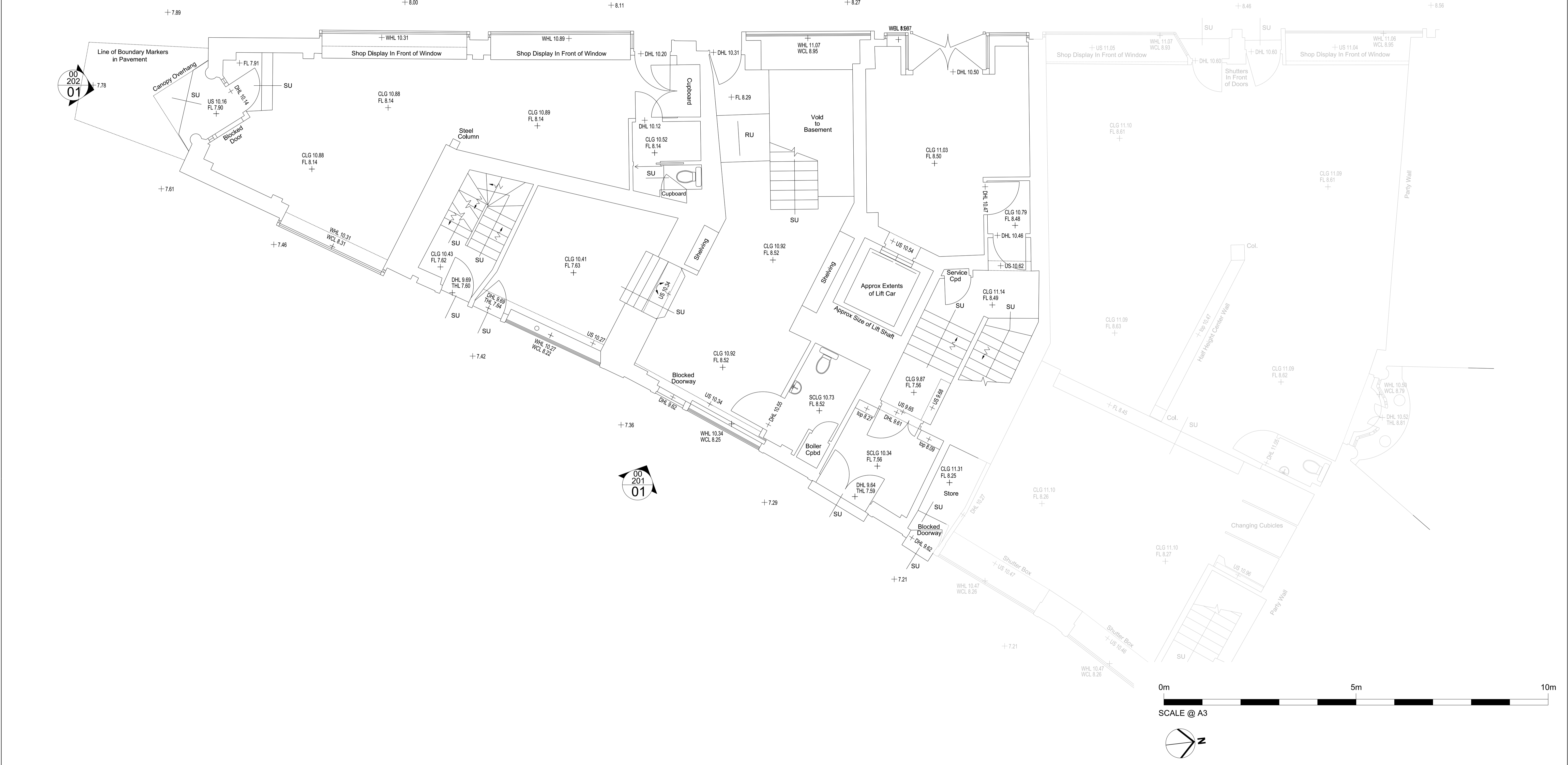
|  |                  |
|--|------------------|
| <b>JOB TITLE</b><br>ST MARTIN'S HOUSE<br>65-75 MONMOUTH STREET |                  |
| <b>CLIENT</b><br>SHAFTESBURY<br>COVENT GARDEN LTD.             |                  |
| drawn by<br>AM   | checked<br>-     |
| scale<br>1:50@A1; 1:100@A3                                     | date<br>26/06/15 |

|  |                            |
|--|----------------------------|
| <b>DRAWING TITLE</b><br>EXISTING ARRANGEMENT<br>BASEMENT FLOOR |                            |
| <b>DRAWING STATUS</b><br>PLANNING                              |                            |
| project<br>1501  | drawing number<br>(00)_100 |
| revision<br>P01  |                            |

00  
200  
01

00  
202  
01

00  
201  
01



**General Notes**

1. Do not scale from this drawing. Refer to stated dimensions.
2. All dimensions to be verified on site by the contractor, before proceeding, and such dimensions to be his responsibility.
3. Report all drawing errors, omissions and discrepancies to Morrow + Lorraine Ltd.
4. All stated areas on this drawing are approximate and to be treated as strictly indicative.
5. Any Ordnance Survey mapping data in this drawing is used under license. Its use is strictly for the preparation of information for this project. Where used Ordnance Survey copyright acknowledgement must be displayed. At project completion all Ordnance Survey data supplied must be deleted and all paper copies destroyed.

| Rev | Date     | Reason For Issue      | Chk |
|-----|----------|-----------------------|-----|
| P01 | 26/06/15 | For planning approval | -   |

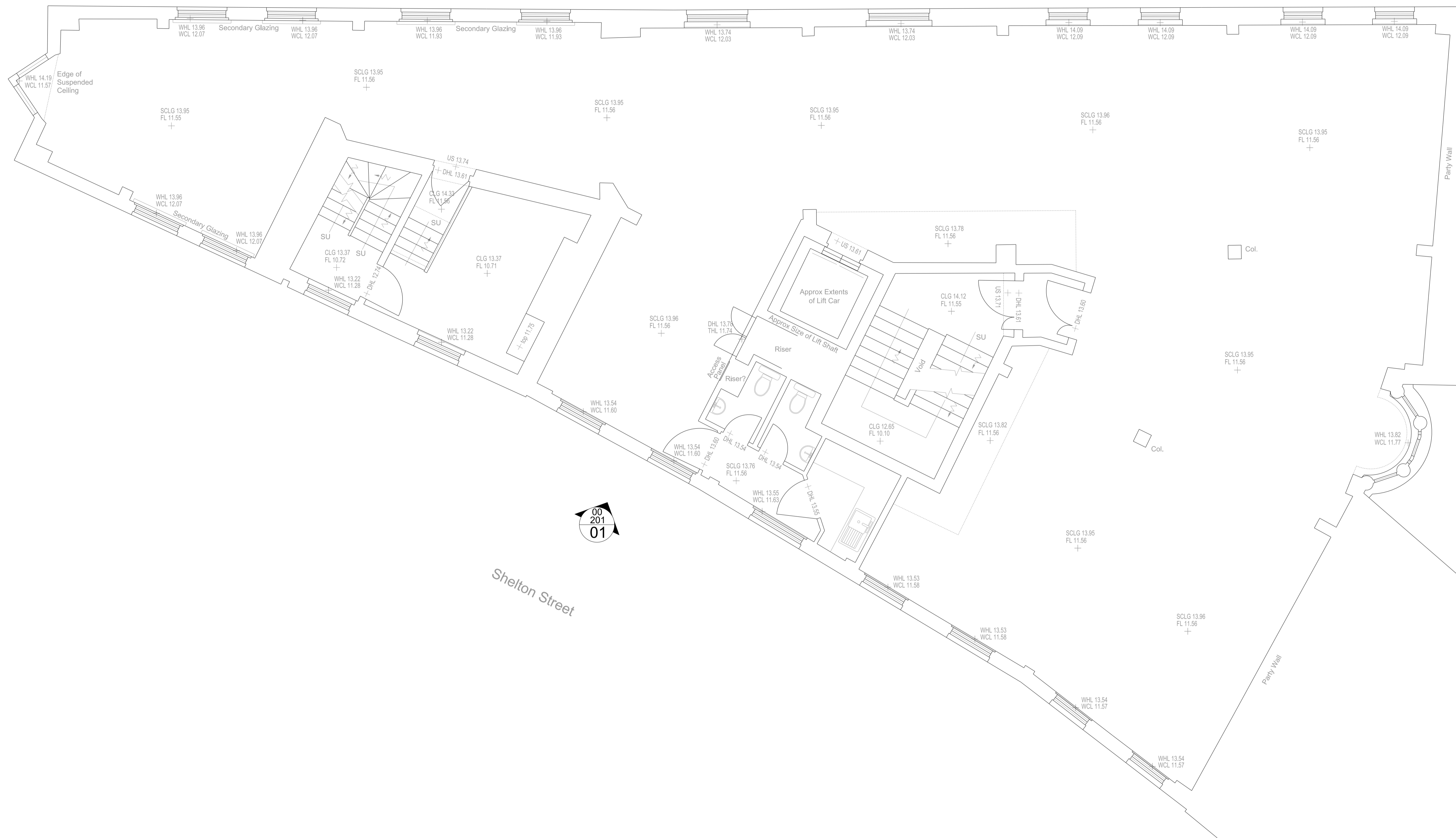
| LOCATION: |
|-----------|
|           |

**MORROW + LORRAINE**  
 MORROW+LORRAINE ARCHITECTS  
 27 MARGARET STREET LONDON W1W 8RY  
 T +44 (0)20 7580 8813 F +44 (0)20 7637 3328  
 INFO@MORROWLORRAINE.COM  
 WWW.MORROWLORRAINE.COM  
 MORROW+LORRAINE LTD REGISTERED IN ENGLAND NO.6802153

|                  |         |  |          |
|------------------|---------|--|----------|
| <b>JOB TITLE</b> |         | ST MARTIN'S HOUSE<br>65-75 MONMOUTH STREET |          |
| <b>CLIENT</b>    |         | SHAFTESBURY<br>COVENT GARDEN LTD.          |          |
| drawn by         | checked | scale                                      | date     |
| AM               | -       | 1:50@A1; 1:100@A3                          | 26/06/15 |

|                       |                |                                      |  |
|-----------------------|----------------|--------------------------------------|--|
| <b>DRAWING TITLE</b>  |                | EXISTING ARRANGEMENT<br>GROUND FLOOR |  |
| <b>DRAWING STATUS</b> |                | PLANNING                             |  |
| project               | drawing number | revision                             |  |
| 1501                  | (00)_101       | P01                                  |  |

|         |                |          |
|---------|----------------|----------|
| project | drawing number | revision |
| 1501    | (00)_101       | P01      |



00  
202  
01

00  
200  
01

00  
201  
01

00  
202  
02

**General Notes**

1. Do not scale from this drawing. Refer to stated dimensions.
2. All dimensions to be verified on site by the contractor, before proceeding, and such dimensions to be his responsibility.
3. Report all drawing errors, omissions and discrepancies to Morrow + Lorraine Ltd.
4. All stated areas on this drawing are approximate and to be treated as strictly indicative.
5. Any Ordnance Survey mapping data in this drawing is used under license. Its use is strictly for the preparation of information for this project. Where used Ordnance Survey copyright acknowledgement must be displayed. At project completion all Ordnance Survey data supplied must be deleted and all paper copies destroyed.

| Rev | Date     | Reason For Issue      | Chk |
|-----|----------|-----------------------|-----|
| P01 | 26/06/15 | For planning approval | -   |

**DRAWING TO BE READ IN CONJUNCTION WITH THE RELEVANT CONSTRUCTION PACKAGES:**

- 00 SERIES - GENERAL ARRANGMENTS
- 20 SERIES - SECONDARY ELEMENTS
- 31 SERIES - GLAZING PACKAGE
- 32 SERIES - DOOR PACKAGE
- 40 SERIES - FINISHES
- 70 SERIES - FITTINGS FIXTURES
- 90 SERIES - EXTERNAL ELEMENTS



**MORROW + LORRAINE**  
 MORROW+LORRAINE ARCHITECTS  
 27 MARGARET STREET LONDON W1W 8RY  
 T +44 (0)20 7580 8813 F +44 (0)20 7637 3328  
 INFO@MORROWLORRAINE.COM  
 WWW.MORROWLORRAINE.COM  
 MORROW+LORRAINE LTD REGISTERED IN ENGLAND NO.6802153

|                  |         |  |          |
|------------------|---------|--|----------|
| <b>JOB TITLE</b> |         | ST MARTIN'S HOUSE<br>65-75 MONMOUTH STREET |          |
| <b>CLIENT</b>    |         | SHAFTESBURY<br>COVENT GARDEN LTD.          |          |
| drawn by         | checked | scale                                      | date     |
| AM               | -       | 1:50@A1; 1:100@A3                          | 26/06/15 |

|                       |                |                                     |  |
|-----------------------|----------------|-------------------------------------|--|
| <b>DRAWING TITLE</b>  |                | EXISTING ARRANGEMENT<br>FIRST FLOOR |  |
| <b>DRAWING STATUS</b> |                | PLANNING                            |  |
| project               | drawing number | revision                            |  |
| 1501                  | (00)_102       | P01                                 |  |



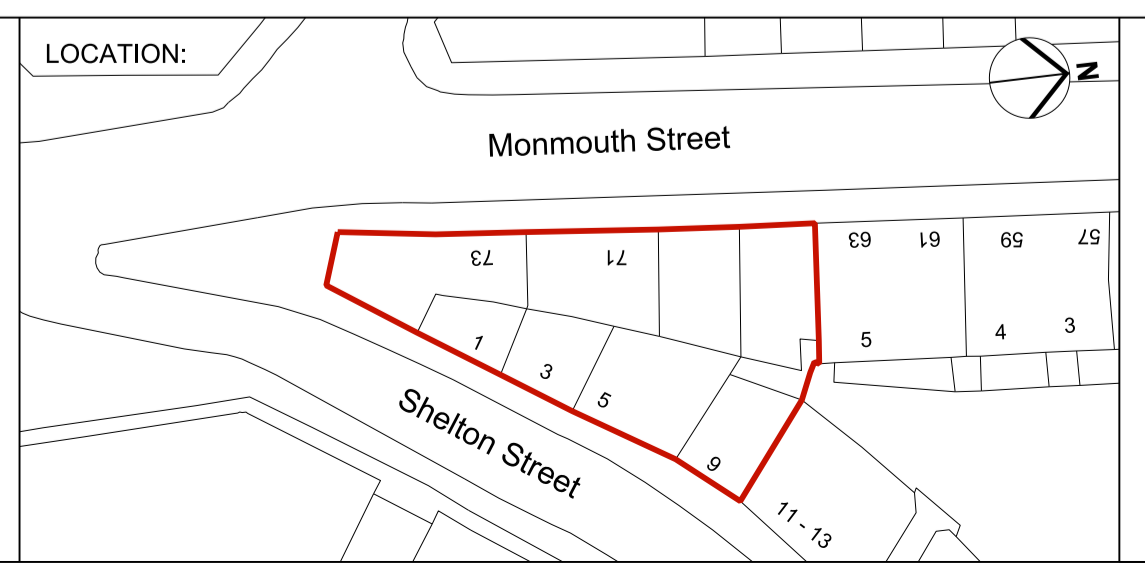
**General Notes**

1. Do not scale from this drawing. Refer to stated dimensions.
2. All dimensions to be verified on site by the contractor, before proceeding, and such dimensions to be his responsibility.
3. Report all drawing errors, omissions and discrepancies to Morrow + Lorraine Ltd.
4. All stated areas on this drawing are approximate and to be treated as strictly indicative.
5. Any Ordnance Survey mapping data in this drawing is used under license. Its use is strictly for the preparation of information for this project. Where used Ordnance Survey copyright acknowledgement must be displayed. At project completion all Ordnance Survey data supplied must be deleted and all paper copies destroyed.

| Rev | Date     | Reason For Issue      | Chk |
|-----|----------|-----------------------|-----|
| P01 | 26/06/15 | For planning approval | -   |

**DRAWING TO BE READ IN CONJUNCTION WITH THE RELEVANT CONSTRUCTION PACKAGES:**

- 00 SERIES - GENERAL ARRANGMENTS
- 20 SERIES - SECONDARY ELEMENTS
- 31 SERIES - GLAZING PACKAGE
- 32 SERIES - DOOR PACKAGE
- 40 SERIES - FINISHES
- 70 SERIES - FITTINGS FIXTURES
- 90 SERIES - EXTERNAL ELEMENTS



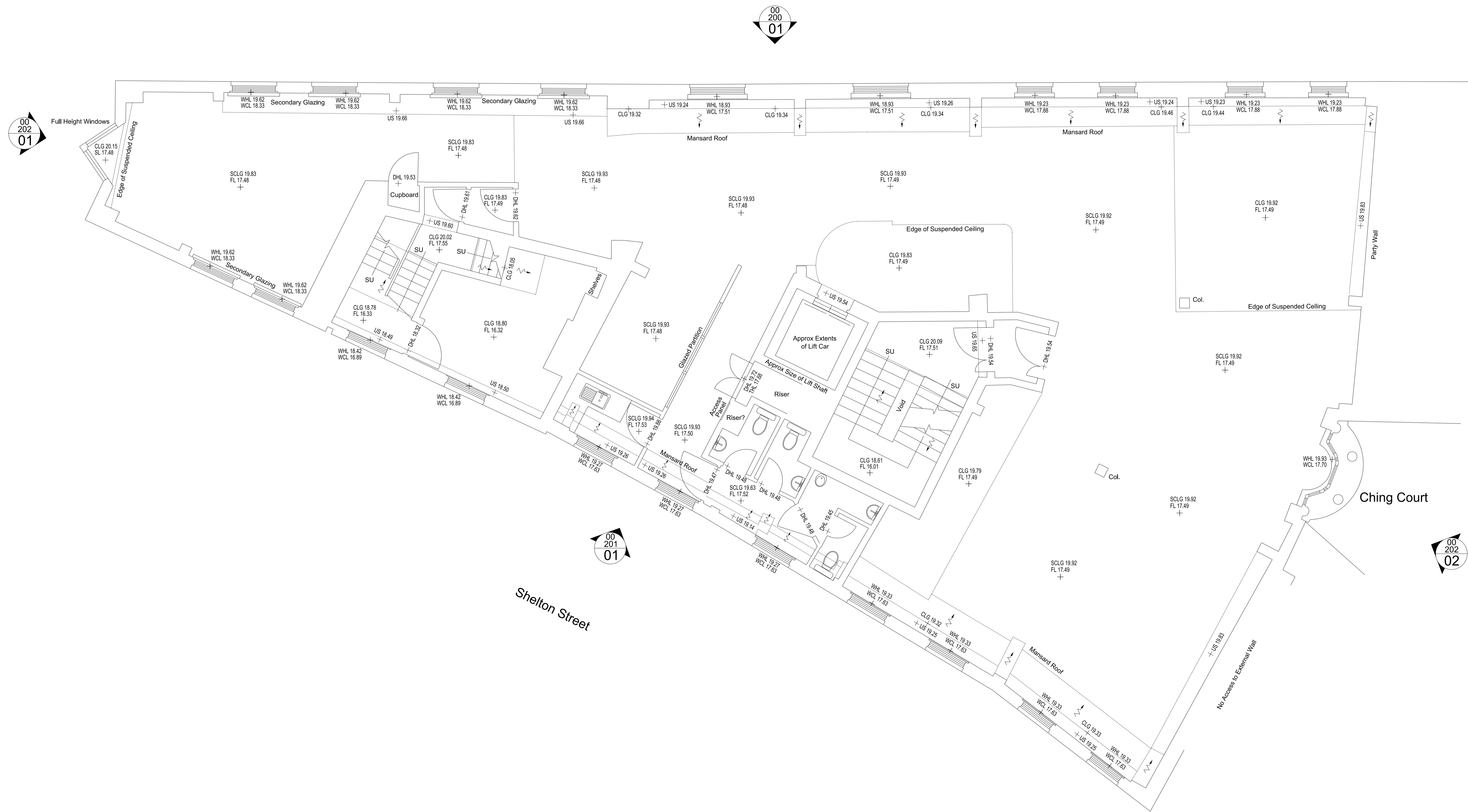
**MORROW + LORRAINE**  
 MORROW+LORRAINE ARCHITECTS  
 27 MARGARET STREET LONDON W1W 8RY  
 T +44 (0)20 7580 8813 F +44 (0)20 7637 3328  
 INFO@MORROWLORRAINE.COM  
 WWW.MORROWLORRAINE.COM  
 MORROW+LORRAINE LTD REGISTERED IN ENGLAND NO.6802153

**JOB TITLE**  
 ST MARTIN'S HOUSE  
 65-75 MONMOUTH STREET

**CLIENT**  
 SHAFTESBURY  
 COVENT GARDEN LTD.

drawn by AM checked - scale 1:50@A1; 1:100@A3 date 26/06/15

| DRAWING TITLE                        |                         | DRAWING STATUS |  |
|--------------------------------------|-------------------------|----------------|--|
| EXISTING ARRANGEMENT<br>SECOND FLOOR |                         | PLANNING       |  |
| project 1501                         | drawing number (00)_103 | revision P01   |  |



**General Notes**

1. Do not scale from this drawing. Refer to stated dimensions.
2. All dimensions to be verified on site by the contractor, before proceeding, and such dimensions to be his responsibility.
3. Report all drawing errors, omissions and discrepancies to Morrow + Lorraine Ltd.
4. All stated areas on this drawing are approximate and to be treated as strictly indicative.
5. Any Ordnance Survey mapping data in this drawing is used under license. Its use is strictly for the preparation of information for this project. Where used Ordnance Survey copyright acknowledgement must be displayed. At project completion all Ordnance Survey data supplied must be deleted and all paper copies destroyed.

| Rev | Date     | Reason For Issue      | Chk |
|-----|----------|-----------------------|-----|
| P01 | 26/06/15 | For planning approval | -   |

**DRAWING TO BE READ IN CONJUNCTION WITH THE RELEVANT CONSTRUCTION PACKAGES:**

**00 SERIES - GENERAL ARRANGMENTS**  
**20 SERIES - SECONDARY ELEMENTS**  
**31 SERIES - GLAZING PACKAGE**  
**32 SERIES - DOOR PACKAGE**  
**40 SERIES - FINISHES**  
**70 SERIES - FITTINGS FIXTURES**  
**90 SERIES - EXTERNAL ELEMENTS**



**MORROW + LORRAINE**

MORROW+LORRAINE ARCHITECTS  
 27 MARGARET STREET LONDON W1W 8RY  
 T +44 (0)20 7580 8813 F +44 (0)20 7637 3328  
 INFO@MORROWLORRAINE.COM  
 WWW.MORROWLORRAINE.COM  
 MORROW+LORRAINE LTD REGISTERED IN ENGLAND NO.6802153

**JOB TITLE**  
 ST MARTIN'S HOUSE  
 65-75 MONMOUTH STREET

**CLIENT**  
 SHAFTESBURY  
 COVENT GARDEN LTD.

drawn by AM checked - scale 1:50@A1; 1:100@A3 date 26/06/15

**DRAWING TITLE**  
 EXISTING ARRANGEMENT  
 THIRD FLOOR

**DRAWING STATUS**  
 PLANNING

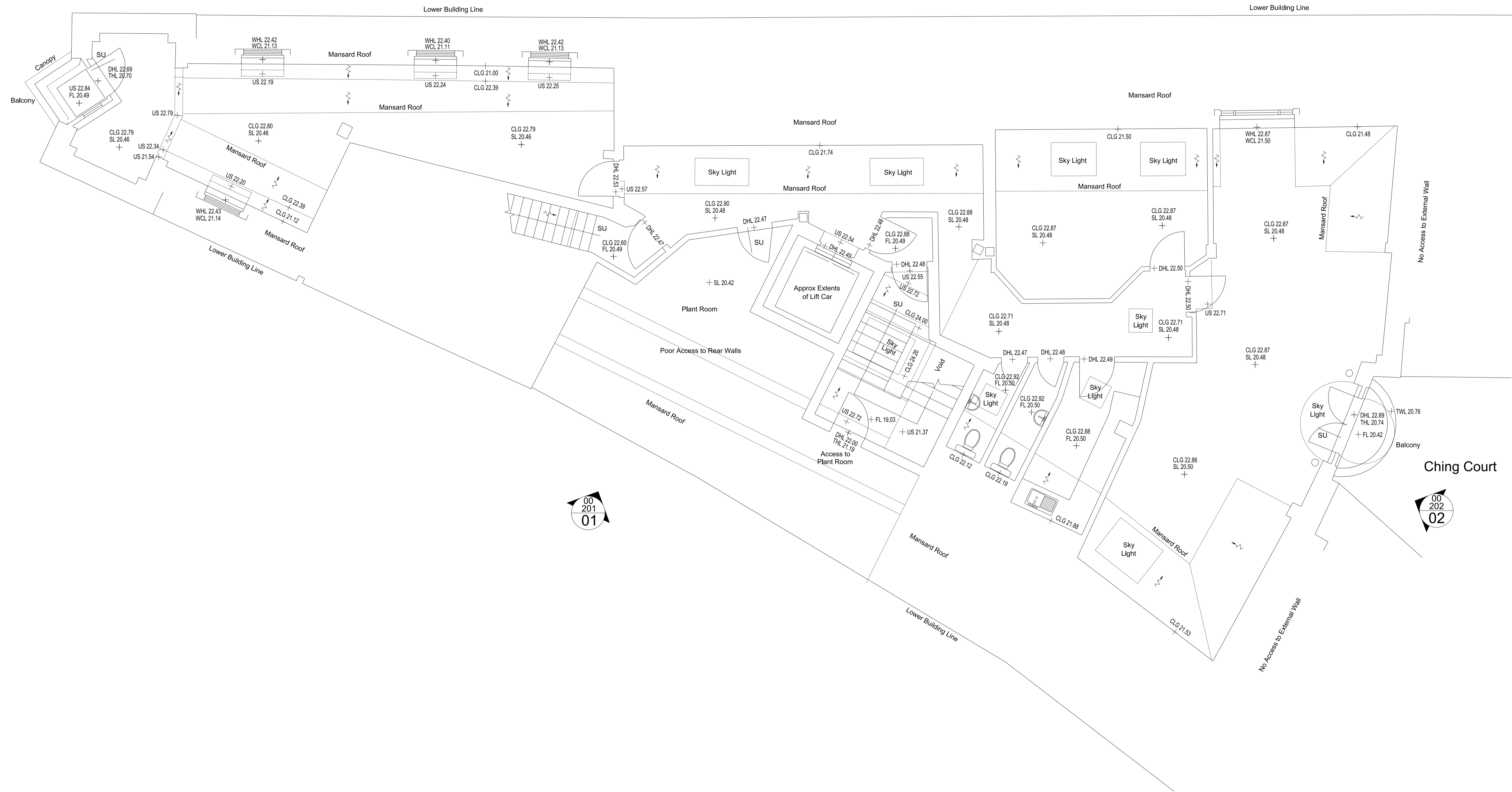
project 1501 drawing number (00)\_104 revision P01

00  
200  
01

00  
202  
01

00  
201  
01

00  
202  
02



**General Notes**

- Do not scale from this drawing. Refer to stated dimensions.
- All dimensions to be verified on site by the contractor, before proceeding, and such dimensions to be his responsibility.
- Report all drawing errors, omissions and discrepancies to Morrow + Lorraine Ltd.
- All stated areas on this drawing are approximate and to be treated as strictly indicative.
- Any Ordnance Survey mapping data in this drawing is used under license. Its use is strictly for the preparation of information for this project. Where used Ordnance Survey copyright acknowledgement must be displayed. At project completion all Ordnance Survey data supplied must be deleted and all paper copies destroyed.

| Rev | Date     | Reason For Issue      | Chk |
|-----|----------|-----------------------|-----|
| P01 | 19/06/15 | For planning approval | -   |

**DRAWING TO BE READ IN CONJUNCTION WITH THE RELEVANT CONSTRUCTION PACKAGES:**

**00 SERIES** - GENERAL ARRANGMENTS  
**20 SERIES** - SECONDARY ELEMENTS  
**31 SERIES** - GLAZING PACKAGE  
**32 SERIES** - DOOR PACKAGE  
**40 SERIES** - FINISHES  
**70 SERIES** - FITTINGS FIXTURES  
**90 SERIES** - EXTERNAL ELEMENTS



**MORROW + LORRAINE**

MORROW+LORRAINE ARCHITECTS  
 27 MARGARET STREET LONDON W1W 8RY  
 T +44 (0)20 7580 8813 F +44 (0)20 7637 3328  
 INFO@MORROWLORRAINE.COM  
 WWW.MORROWLORRAINE.COM  
 MORROW+LORRAINE LTD REGISTERED IN ENGLAND NO.6802153

**JOB TITLE**  
 ST MARTIN'S HOUSE  
 65-75 MONMOUTH STREET

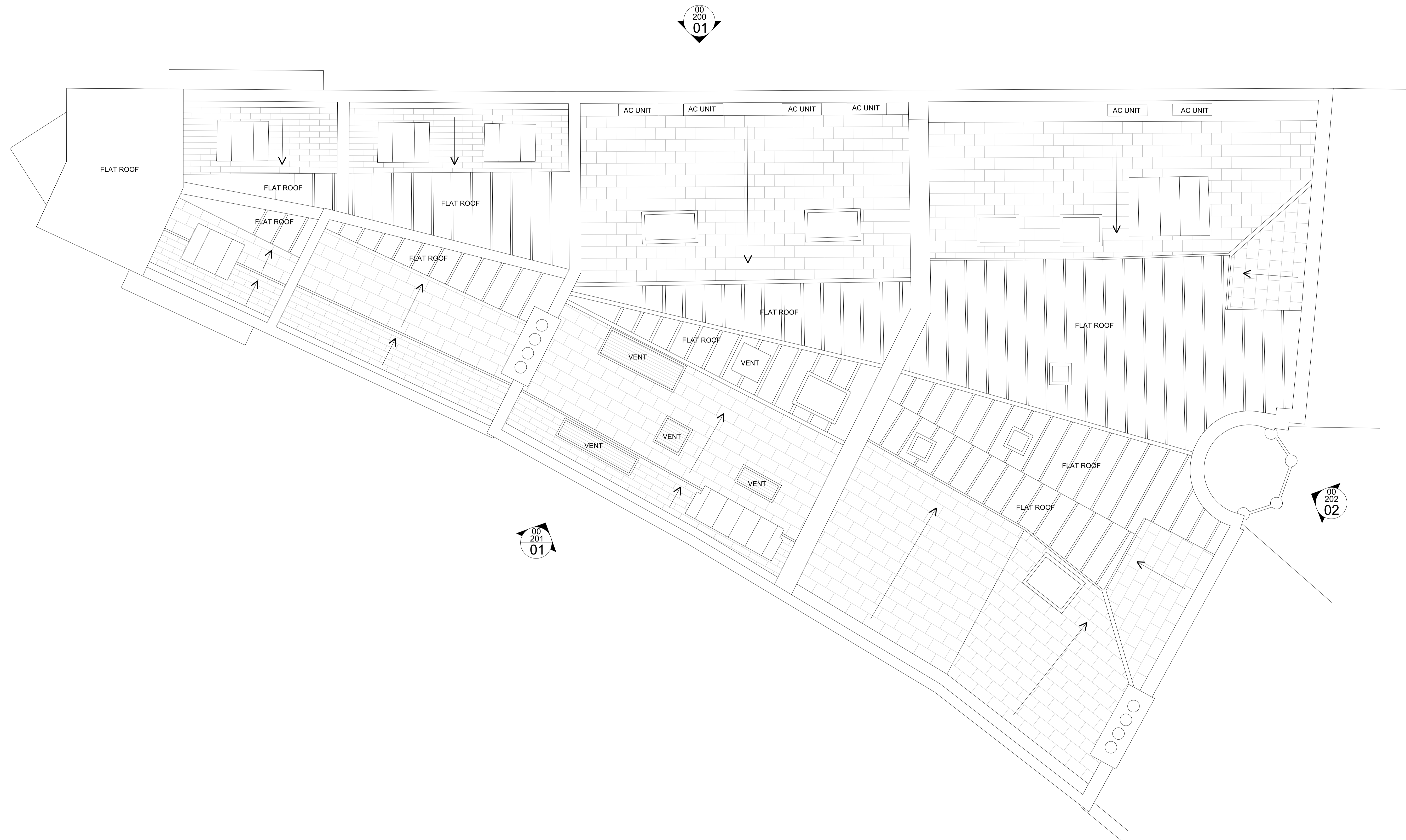
**CLIENT**  
 SHAFTESBURY  
 COVENT GARDEN LTD.

drawn by AM checked - scale 1:50@A1; 1:100@A3 date 26/06/15

**DRAWING TITLE**  
 EXISTING ARRANGEMENT  
 FOURTH FLOOR

**DRAWING STATUS**  
 PLANNING

project 1501 drawing number (00)\_105 revision P01



**General Notes**

1. Do not scale from this drawing. Refer to stated dimensions.
2. All dimensions to be verified on site by the contractor, before proceeding, and such dimensions to be his responsibility.
3. Report all drawing errors, omissions and discrepancies to Morrow + Lorraine Ltd.
4. All stated areas on this drawing are approximate and to be treated as strictly indicative.
5. Any Ordnance Survey mapping data in this drawing is used under license. Its use is strictly for the preparation of information for this project. Where used Ordnance Survey copyright acknowledgement must be displayed. At project completion all Ordnance Survey data supplied must be deleted and all paper copies destroyed.

| Rev | Date     | Reason For Issue      | Chk |
|-----|----------|-----------------------|-----|
| -   | 17/03/15 | COMMENT               | -   |
| P01 | 19/06/15 | For planning approval | -   |

**DRAWING TO BE READ IN CONJUNCTION WITH THE RELEVANT CONSTRUCTION PACKAGES:**

**00 SERIES** - GENERAL ARRANGMENTS  
**20 SERIES** - SECONDARY ELEMENTS  
**31 SERIES** - GLAZING PACKAGE  
**32 SERIES** - DOOR PACKAGE  
**40 SERIES** - FINISHES  
**70 SERIES** - FITTINGS FIXTURES  
**90 SERIES** - EXTERNAL ELEMENTS



**MORROW + LORRAINE**

MORROW+LORRAINE ARCHITECTS  
 27 MARGARET STREET LONDON W1W 8RY  
 T +44 (0)20 7580 8813 F +44 (0)20 7637 3328  
 INFO@MORROWLORRAINE.COM  
 WWW.MORROWLORRAINE.COM  
 MORROW+LORRAINE LTD REGISTERED IN ENGLAND NO.6802153

**JOB TITLE**  
 ST MARTIN'S HOUSE  
 65-75 MONMOUTH STREET

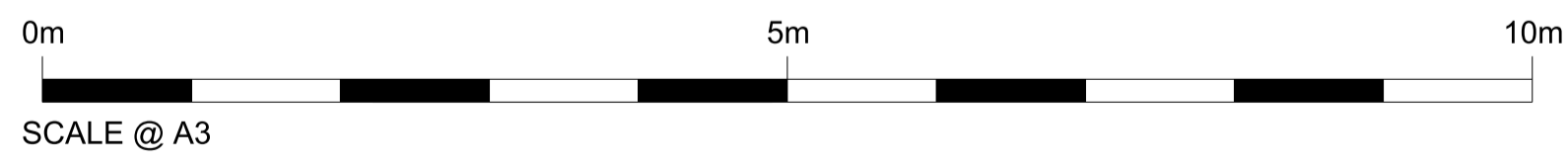
**CLIENT**  
 SHAFTESBURY  
 COVENT GARDEN LTD.

drawn by AM checked - scale 1:50@A1; 1:100@A3 date 26/06/15

**DRAWING TITLE**  
 EXISTING ARRANGEMENT  
 ROOF LEVEL

**DRAWING STATUS**  
 PLANNING

project 1501 drawing number (00)\_106 revision P01



CORRESPONDS TO CONSENTED DRAWING:  
20321-P11 Rev B

**General Notes**  
 1. Do not scale from this drawing. Refer to stated dimensions.  
 2. All dimensions to be verified on site by the contractor, before proceeding, and such dimensions to be his responsibility.  
 3. Report all drawing errors, omissions and discrepancies to Morrow + Lorraine Ltd.  
 4. All stated areas on this drawing are approximate and to be treated as strictly indicative.  
 5. Any Ordnance Survey mapping data in this drawing is used under license. Its use is strictly for the preparation of information for this project. Where used Ordnance Survey copyright acknowledgement must be displayed. At project completion all Ordnance Survey data supplied must be deleted and all paper copies destroyed.

| Rev | Date     | Reason For Issue      | Chk |
|-----|----------|-----------------------|-----|
| P01 | 26/06/15 | For planning approval | -   |

**DRAWING TO BE READ IN CONJUNCTION WITH THE RELEVANT CONSTRUCTION PACKAGES:**  
**00 SERIES - GENERAL ARRANGMENTS**  
**20 SERIES - SECONDARY ELEMENTS**  
**31 SERIES - GLAZING PACKAGE**  
**32 SERIES - DOOR PACKAGE**  
**40 SERIES - FINISHES**  
**70 SERIES - FITTINGS FIXTURES**  
**90 SERIES - EXTERNAL ELEMENTS**



**MORROW + LORRAINE**  
 MORROW+LORRAINE ARCHITECTS  
 27 MARGARET STREET LONDON W1W 8RY  
 T +44 (0)20 7580 8813 F +44 (0)20 7637 3328  
 INFO@MORROWLORRAINE.COM  
 WWW.MORROWLORRAINE.COM  
 MORROW+LORRAINE LTD REGISTERED IN ENGLAND NO.6802153

**JOB TITLE**  
 ST MARTIN'S HOUSE  
 65-75 MONMOUTH STREET

**CLIENT**  
 SHAFTESBURY  
 COVENT GARDEN LTD.

drawn by AM checked - scale 1:50@A1; 1:100@A3 date 26/06/15

**DRAWING TITLE**  
 CONSENTED ELEVATION  
 MONMOUTH STREET

**DRAWING STATUS**  
 PLANNING

project 1501 drawing number (00)\_200 revision P01



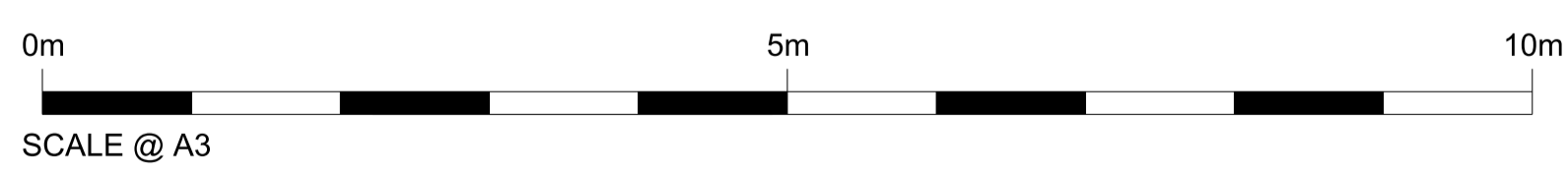
New 800x800mm kitchen duct from basement protruding at low level through central flat section of roof - not visible from below/pavement as concealed behind existing brick wall

New 650x650mm kitchen duct from basement to terminate within/behind existing false dormer with retained obscured glazing, fully concealed and hidden from view except for open top section

4no. new acoustic vents required for background ventilation to habitable rooms and for kitchen/bathroom extraction as stipulated by Building Regulations.

To be double height air bricks in matching finish to the existing surrounding brick or cowls in matching finish to render present so as to blend in.

New windows and entrance door area as per previously consented permission under ref: 2012/2909/P 8 August 2012.



CORRESPONDS TO CONSENTED DRAWING:  
20321-P12 Rev E

**General Notes**

- Do not scale from this drawing. Refer to stated dimensions.
- All dimensions to be verified on site by the contractor, before proceeding, and such dimensions to be his responsibility.
- Report all drawing errors, omissions and discrepancies to Morrow + Lorraine Ltd.
- All stated areas on this drawing are approximate and to be treated as strictly indicative.
- Any Ordnance Survey mapping data in this drawing is used under license. Its use is strictly for the preparation of information for this project. Where used Ordnance Survey copyright acknowledgement must be displayed. At project completion all Ordnance Survey data supplied must be deleted and all paper copies destroyed.

| Rev | Date     | Reason For Issue      | Chk |
|-----|----------|-----------------------|-----|
| P01 | 26/06/15 | For planning approval | -   |

**DRAWING TO BE READ IN CONJUNCTION WITH THE RELEVANT CONSTRUCTION PACKAGES:**

- 00 SERIES - GENERAL ARRANGMENTS
- 20 SERIES - SECONDARY ELEMENTS
- 31 SERIES - GLAZING PACKAGE
- 32 SERIES - DOOR PACKAGE
- 40 SERIES - FINISHES
- 70 SERIES - FITTINGS FIXTURES
- 90 SERIES - EXTERNAL ELEMENTS



**MORROW + LORRAINE**

MORROW+LORRAINE ARCHITECTS  
27 MARGARET STREET LONDON W1W 8RY  
T +44 (0)20 7580 8813 F +44 (0)20 7637 3328  
INFO@MORROWLORRAINE.COM  
WWW.MORROWLORRAINE.COM  
MORROW+LORRAINE LTD REGISTERED IN ENGLAND NO.6802153

|  |                |                                       |          |
|--|----------------|---------------------------------------|----------|
| JOB TITLE                                  |                | DRAWING TITLE                         |          |
| ST MARTIN'S HOUSE<br>65-75 MONMOUTH STREET |                | CONSENTED ELEVATION<br>SHELTON STREET |          |
| CLIENT                                     |                | DRAWING STATUS                        |          |
| SHAFTESBURY<br>COVENT GARDEN LTD.          |                | PLANNING                              |          |
| drawn by                                   | checked        | scale                                 | date     |
| AM   | -              | 1:50@A1; 1:100@A3                     | 26/06/15 |
| project                                    | drawing number | revision                              |          |
| 1501                                       | (00)_201       | P01                                   |          |



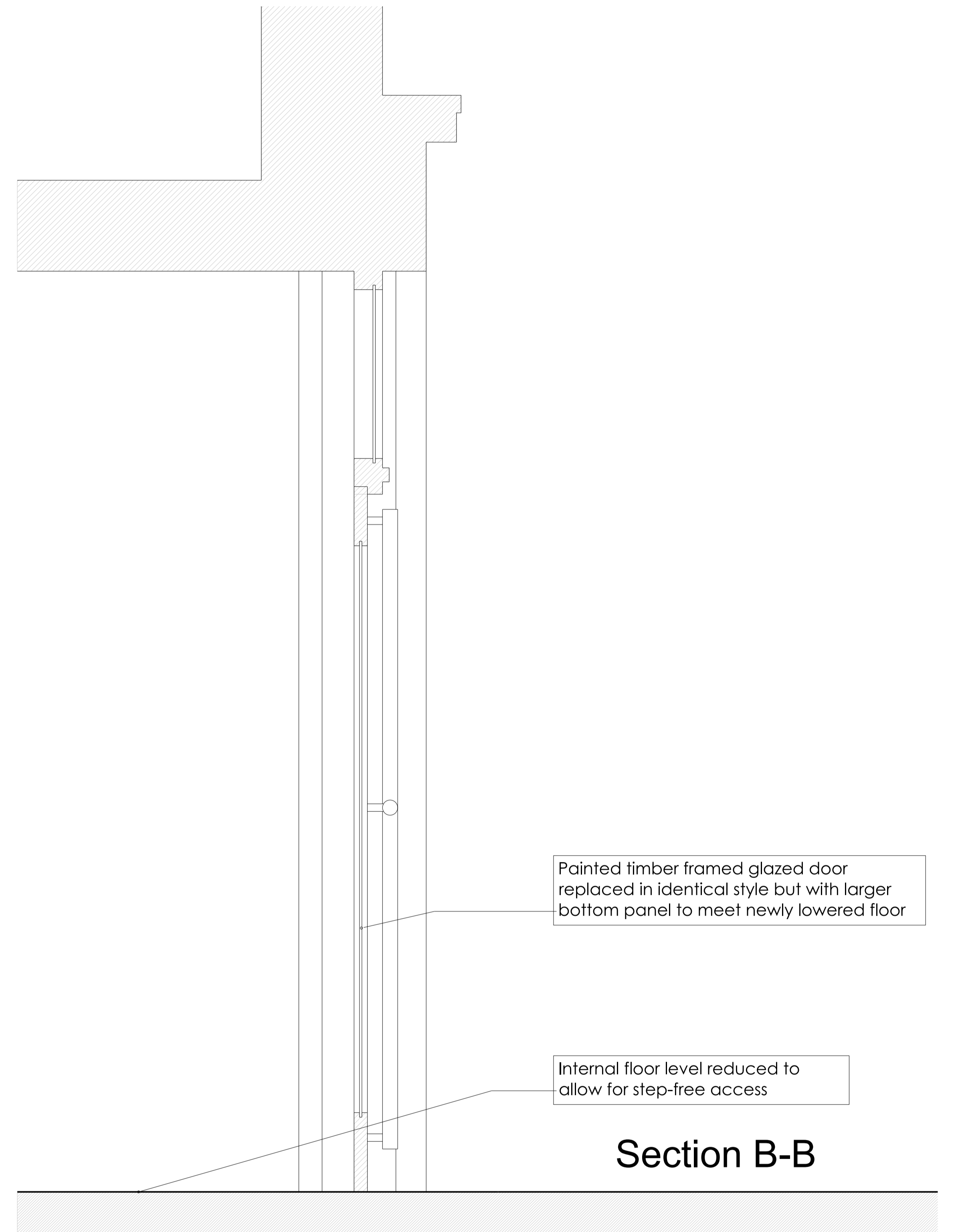
Painted timber framed glazed doors replaced with similar but lower base panels extended down to suit level access.

Internal floor level reduced to allow for step-free access

00  
300  
B  
doors to no.5

Shelton Street Elevation

2.0m  
1.0m  
0.0m  
1:20 @ A3



Painted timber framed glazed door replaced in identical style but with larger bottom panel to meet newly lowered floor

Internal floor level reduced to allow for step-free access

Section B-B

CORRESPONDS TO CONSENTED DRAWING:  
20321-P08 Rev B

**General Notes**  
 1. Do not scale from this drawing. Refer to stated dimensions.  
 2. All dimensions to be verified on site by the contractor, before proceeding, and such dimensions to be his responsibility.  
 3. Report all drawing errors, omissions and discrepancies to Morrow + Lorraine Ltd.  
 4. All stated areas on this drawing are approximate and to be treated as strictly indicative.  
 5. Any Ordnance Survey mapping data in this drawing is used under license. Its use is strictly for the preparation of information for this project. Where used Ordnance Survey copyright acknowledgement must be displayed. At project completion all Ordnance Survey data supplied must be deleted and all paper copies destroyed.

| Rev | Date     | Reason For Issue      | Chk |
|-----|----------|-----------------------|-----|
| P01 | 26/06/15 | For planning approval | -   |

**DRAWING TO BE READ IN CONJUNCTION WITH THE RELEVANT CONSTRUCTION PACKAGES:**  
 00 SERIES - GENERAL ARRANGMENTS  
 20 SERIES - SECONDARY ELEMENTS  
 31 SERIES - GLAZING PACKAGE  
 32 SERIES - DOOR PACKAGE  
 40 SERIES - FINISHES  
 70 SERIES - FITTINGS FIXTURES  
 90 SERIES - EXTERNAL ELEMENTS

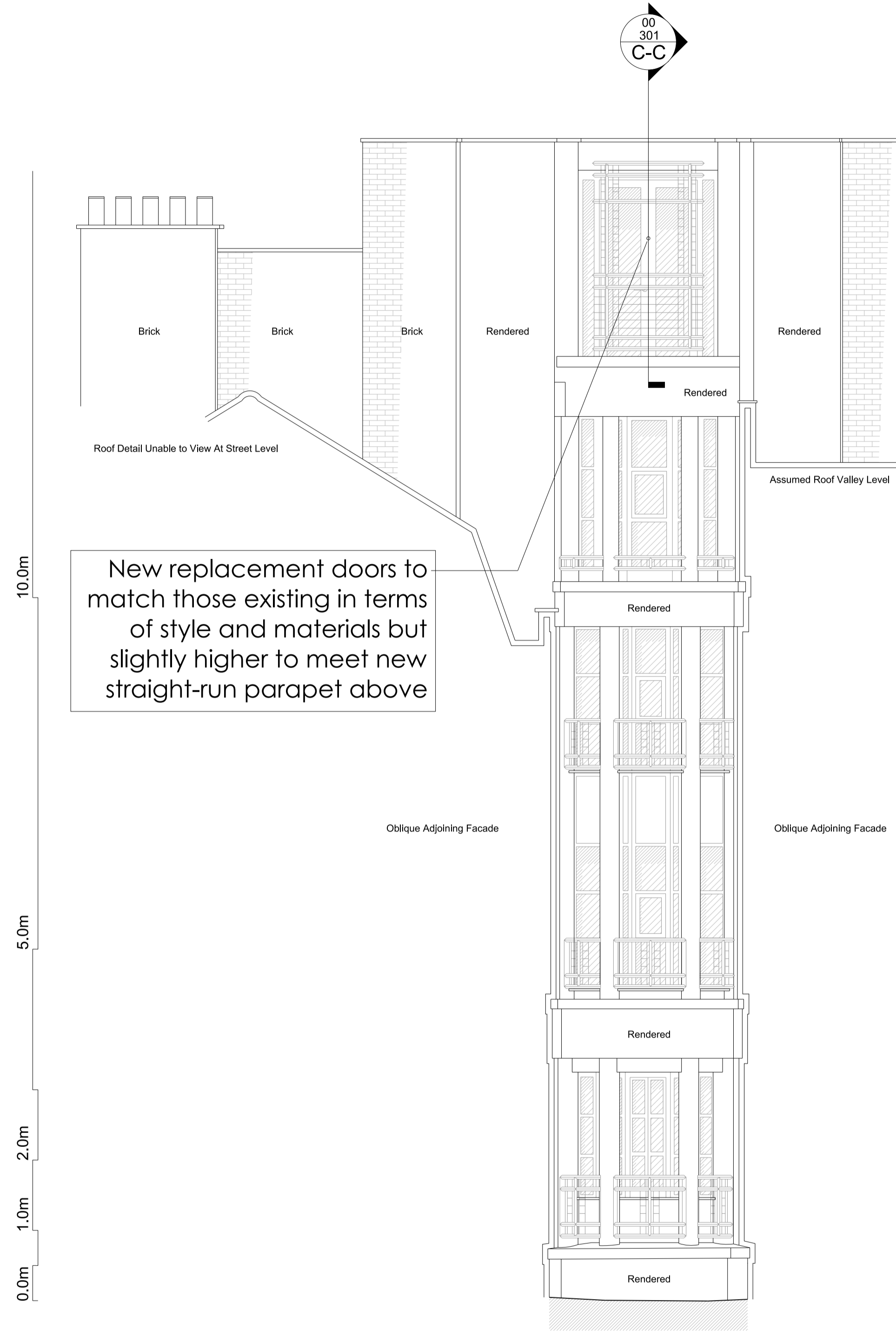


**MORROW + LORRAINE**  
 MORROW+LORRAINE ARCHITECTS  
 27 MARGARET STREET LONDON W1W 8RY  
 T +44 (0)20 7580 8813 F +44 (0)20 7637 3328  
 INFO@MORROWLORRAINE.COM  
 WWW.MORROWLORRAINE.COM  
 MORROW+LORRAINE LTD REGISTERED IN ENGLAND NO.6802153

**JOB TITLE**  
 ST MARTIN'S HOUSE  
 65-75 MONMOUTH STREET

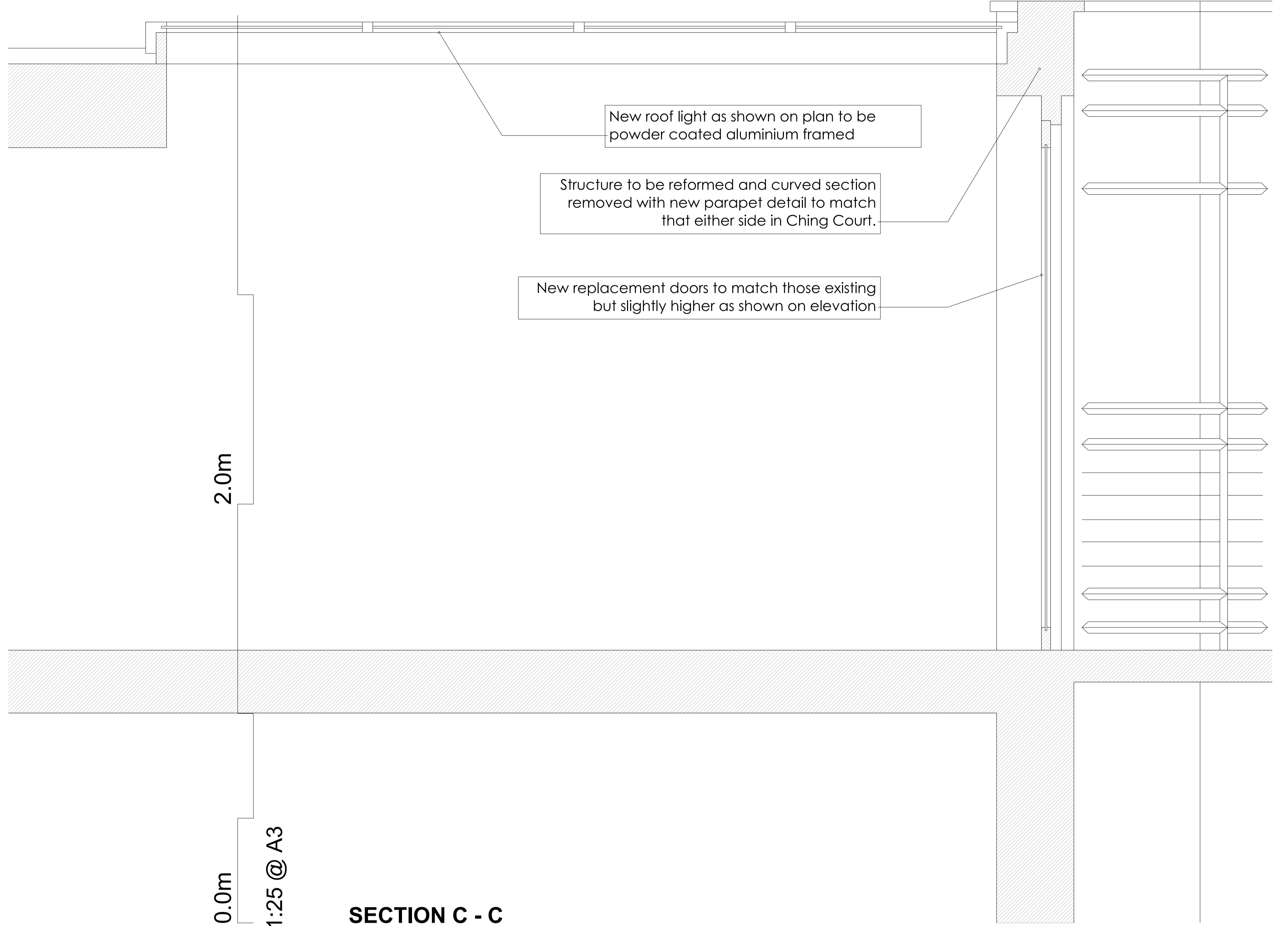
**CLIENT**  
 SHAFTESBURY  
 COVENT GARDEN LTD.

| DRAWING TITLE                              |                            | DRAWING STATUS             |                  |
|--|----------------------------|----------------------------|------------------|
| CONSENTED SECTION B<br>SHELTON STREET EXIT |                            | PLANNING                   |                  |
| drawn by<br>AM                             | checked<br>-               | scale<br>1:50@A1; 1:100@A3 | date<br>26/06/15 |
| project<br>1501                            | drawing number<br>(00)_300 | revision<br>P01            |                  |



1:100 @ A3

Ching Court Elevation



SECTION C - C

CORRESPONDS TO CONSSENTED DRAWING:  
20321-P09

**General Notes**  
 1. Do not scale from this drawing. Refer to stated dimensions.  
 2. All dimensions to be verified on site by the contractor, before proceeding, and such dimensions to be his responsibility.  
 3. Report all drawing errors, omissions and discrepancies to Morrow + Lorraine Ltd.  
 4. All stated areas on this drawing are approximate and to be treated as strictly indicative.  
 5. Any Ordnance Survey mapping data in this drawing is used under license. Its use is strictly for the preparation of information for this project. Where used Ordnance Survey copyright acknowledgement must be displayed. At project completion all Ordnance Survey data supplied must be deleted and all paper copies destroyed.

| Rev | Date     | Reason For Issue      | Chk |
|-----|----------|-----------------------|-----|
| P01 | 26/06/15 | For planning approval | -   |

**DRAWING TO BE READ IN CONJUNCTION WITH THE RELEVANT CONSTRUCTION PACKAGES:**  
 00 SERIES - GENERAL ARRANGMENTS  
 20 SERIES - SECONDARY ELEMENTS  
 31 SERIES - GLAZING PACKAGE  
 32 SERIES - DOOR PACKAGE  
 40 SERIES - FINISHES  
 70 SERIES - FITTINGS FIXTURES  
 90 SERIES - EXTERNAL ELEMENTS



**MORROW + LORRAINE**  
 MORROW+LORRAINE ARCHITECTS  
 27 MARGARET STREET LONDON W1W 8RY  
 T +44 (0)20 7580 8813 F +44 (0)20 7637 3328  
 INFO@MORROWLORRAINE.COM  
 WWW.MORROWLORRAINE.COM  
 MORROW+LORRAINE LTD REGISTERED IN ENGLAND NO.6802153

**JOB TITLE**  
 ST MARTIN'S HOUSE  
 65-75 MONMOUTH STREET

**CLIENT**  
 SHAFTESBURY  
 COVENT GARDEN LTD.

**DRAWING TITLE**  
 CONSENTED SECTION C-C  
 ROOF TERRACE CANOPY

**DRAWING STATUS**  
 PLANNING

| drawn by | checked | scale             | date     | project | drawing number | revision |
|----------|---------|-------------------|----------|---------|----------------|----------|
| AM       | -       | 1:50@A1; 1:100@A3 | 17/03/15 | 1501    | (00)_301       | P01      |