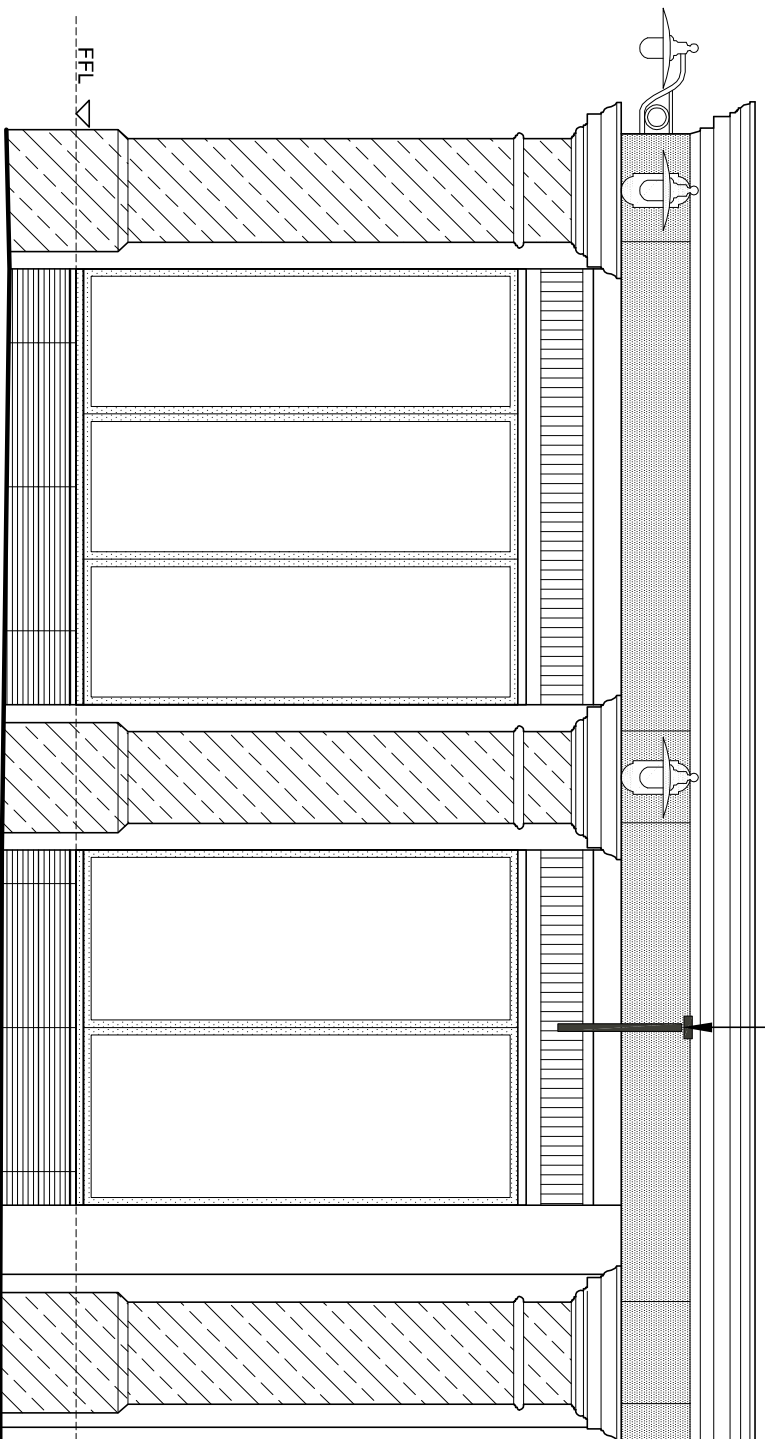




ELEVATION A CAMBRIDGE CIRCUS

Proposed 750 x 750mm externally illuminated double sided projecting sign



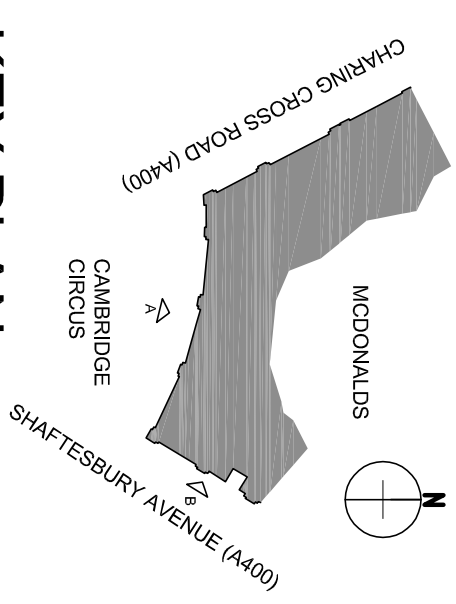
ELEVATION B SHAFTESBURY AVENUE

BUILDING SIGN SCHEDULE - ERDTS SIGNAGE (BUTTERFIELDS SIGNS)					
ADVERT REF	SIGN TYPE	QTY	SIZE (mm)	MATERIALS	HEIGHT (mm) ABOVE GROUND
Projecting Sign	1	750W x 50D x 750H	RAL 6015 Green aluminum face panels with yellow acrylic "Golden Arch" symbol.	Refer to Elevations	N/A
					480
					Externally lit (STATIC - Max. 600cd/m ²)

Proposed 750 x 750mm externally illuminated double sided projecting sign



Notes:
All drawings to be read in conjunction with all other drawings as noted on issue sheet.



KEY PLAN 1:500

REV.	DATE	DESCRIPTION	DRAWING RESPONSE	BY	CHECKED
B	14.12.15	Sign illumination updated.		NCC	
A	11.11.15	PLANNING ISSUE		NCC	

GENERAL NOTES:
All works are to be undertaken in accordance with the Building Regulations and the latest British Standards. All proprietary materials and products are to be used strictly in accordance with the manufacturer's recommendations. All dimensions are to be checked on site prior to construction. All work is to be completed in accordance with the Building Regulations (Design Management) Regulations 2015.

PROPOSED DEVELOPMENT AT
Leon de Bruxelles
Cambridge Circus, LONDON

STORE No. :-
NB8253
ST1427

ON BEHALF OF :-
McDonald's Restaurants Ltd

DRAWING TITLE :-
Proposed Projecting Sign
Elevations

DESIGNED BY Scurr Architects
CHECKED BY Scurr Architects
DATE 11/11/15
DRAWING No. 6743-PL-011
REV. No. B

© Copyright McDonald's Restaurants & Scurr Architects