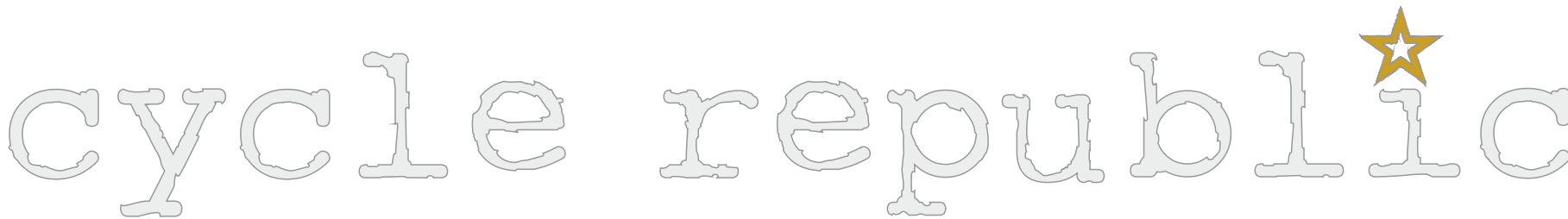
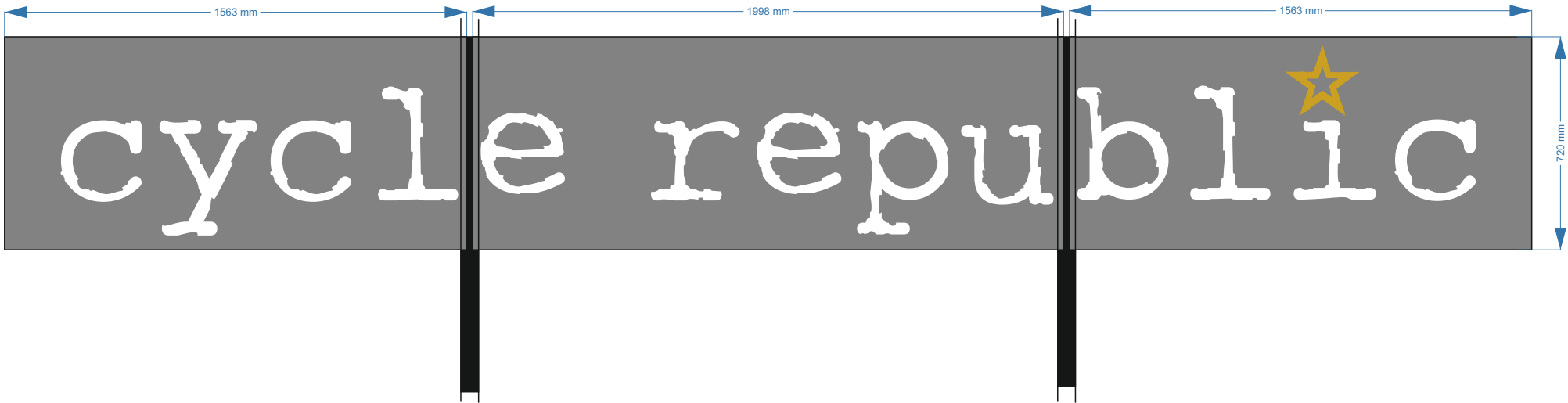


Sign A
Scale 1:20

logo graphic setup in accordance with survey dimensions.



10mm clear px letters with 3mm 050, flood coated to face, letters cut and cleaned, not polished.
(apply printed translucent vinyl to face of star, illuminate PMS 7753).
clear high bond tape to cover rear of letters, bond to glass
*** use



rev cut grey vinyl mactac 9889-17 backed with blockout film,
Stencil cut logo rev applied to glass. back the vinyl up with
3M diffuser film 3639-70 so letters only illuminate..

-2mm offset applied to lettering so vinyl
sits inside dimensions of acrylic letters.



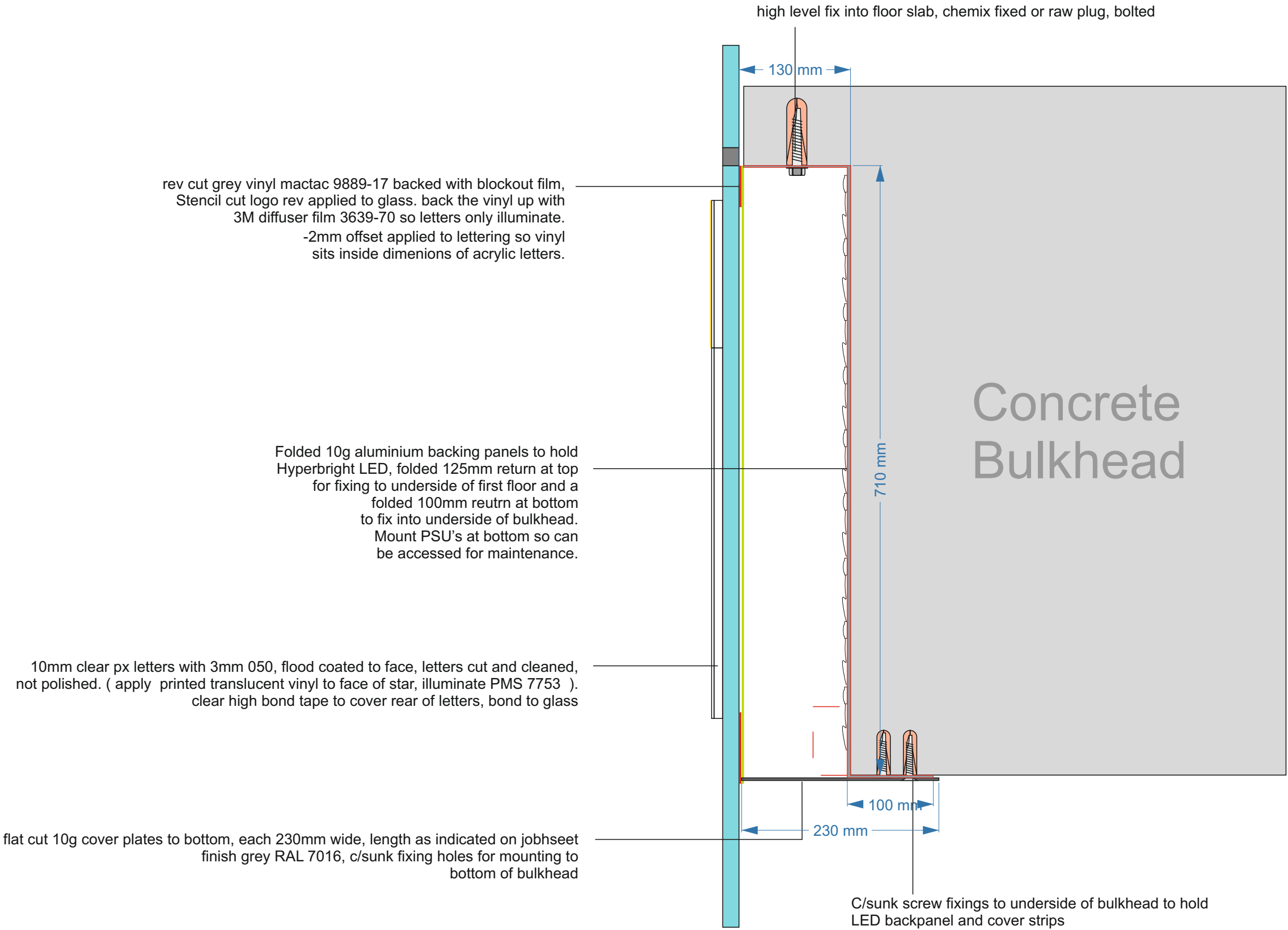
PROPOSED



EXISTING

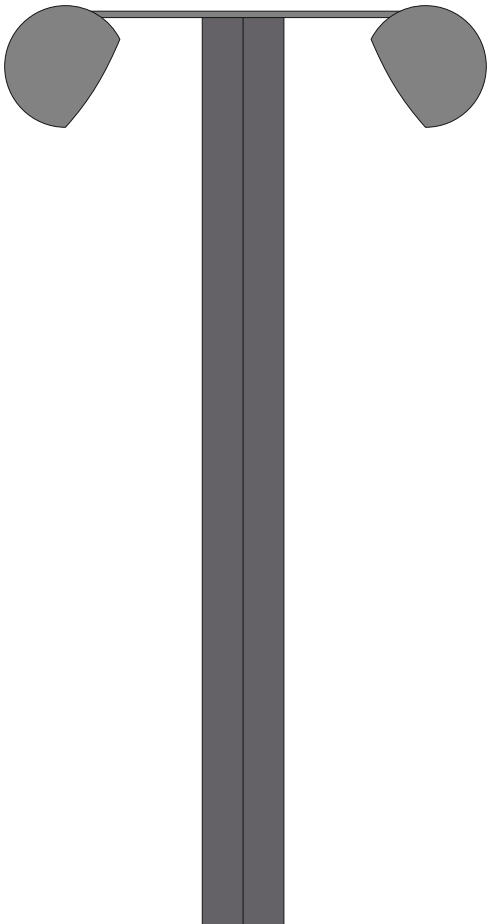


Sign A
Scale 1:5



FILE EXT.	\\A-Z Projects\CYCLE REPUBLIC\CYCLE REPUBLIC 023_BLOOMSBURY_REV 04	DWG No.	CYCLE REPUBLIC 023_BLOOMSBURY_REV 04	REVISIONS: REV_00_INITIAL PRESENTATION REV_01_OPTIONS AS REQUESTED REV_02_OPTIONS AS REQUESTED REV_03_OPTION 1 APPROVED REV_04_AS PER PLANNING RESTRICTION	DRAWING APPROVAL:
CLIENT	CYCLE REPUBLIC	DATE	08-10-15		APPROVED BY:
ADDRESS	BLOOMSBURY	JOB No.	#####		APPROVED BY:
DRAWN BY	J.KING	SCALE	1:20 / 1:10 @ A3		

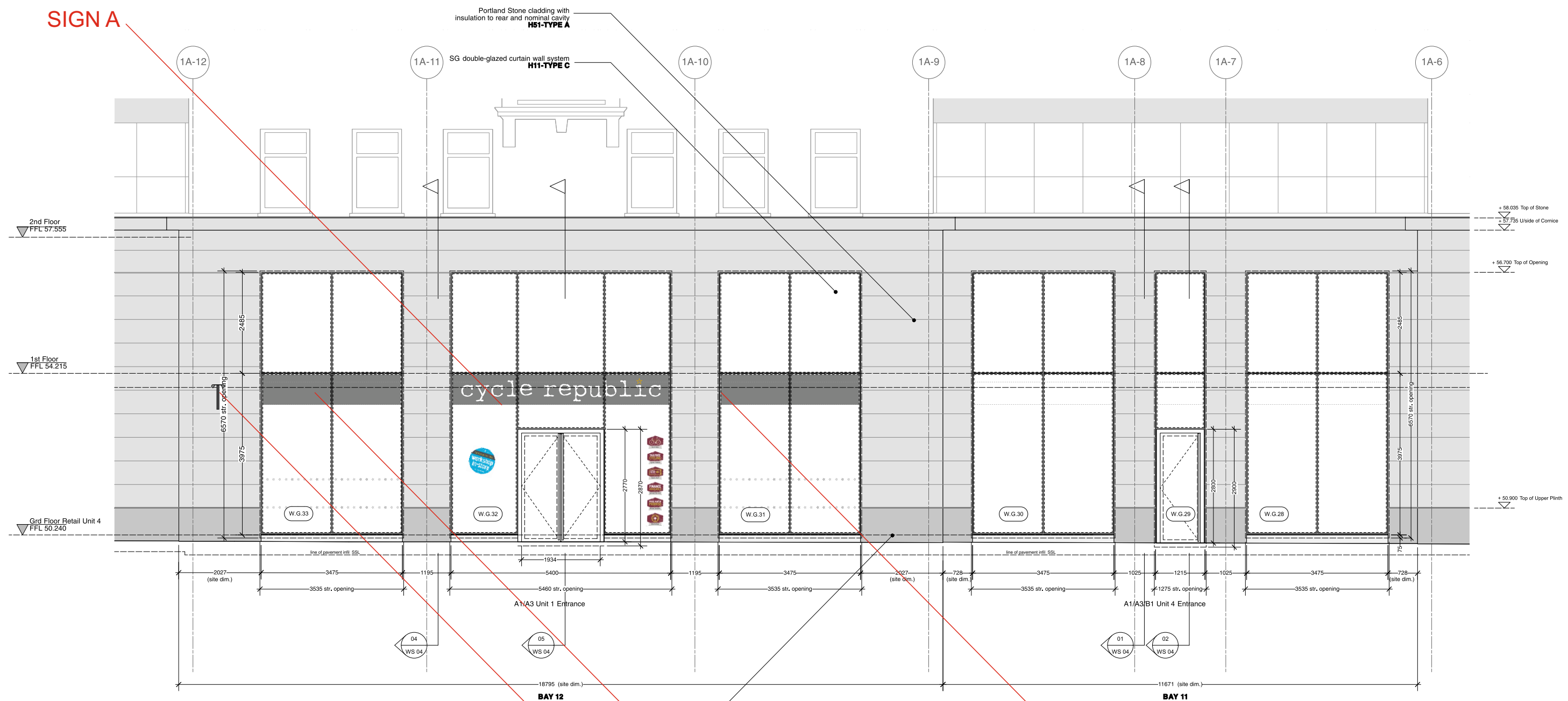




Sign B
1No double sided projecting signs comprising
2No 14g folded aluminium panels 900 x 600mm with 28mm returns to 3 sides only
(*open to LH side to sleeve a 50 x 50 angle frame
powder coated grey Ral 7016 with white & gold vinyl logo applied to each side
Ecolux trough lights to top painted to match Ral 7016
scale 1:10

FILE EXT.	\\A-Z Projects\CYCLE REPUBLIC\CYCLE REPUBLIC 023_BLOOMSBURY_REV 04	DWG No.	CYCLE REPUBLIC 023_BLOOMSBURY_REV 04	REVISIONS: REV_00_INITIAL PRESENTATION REV_01_OPTIONS AS REQUESTED REV_02_OPTIONS AS REQUESTED REV_03_OPTION 1 APPROVED REV_04_AS PER PLANNING RESTRICTION	DRAWING APPROVAL:
CLIENT	CYCLE REPUBLIC	DATE	08-10-15		APPROVED BY:
ADDRESS	BLOOMSBURY	JOB No.	#####		APPROVED BY:
DRAWN BY	J.KING	SCALE	1:10 @ A3		





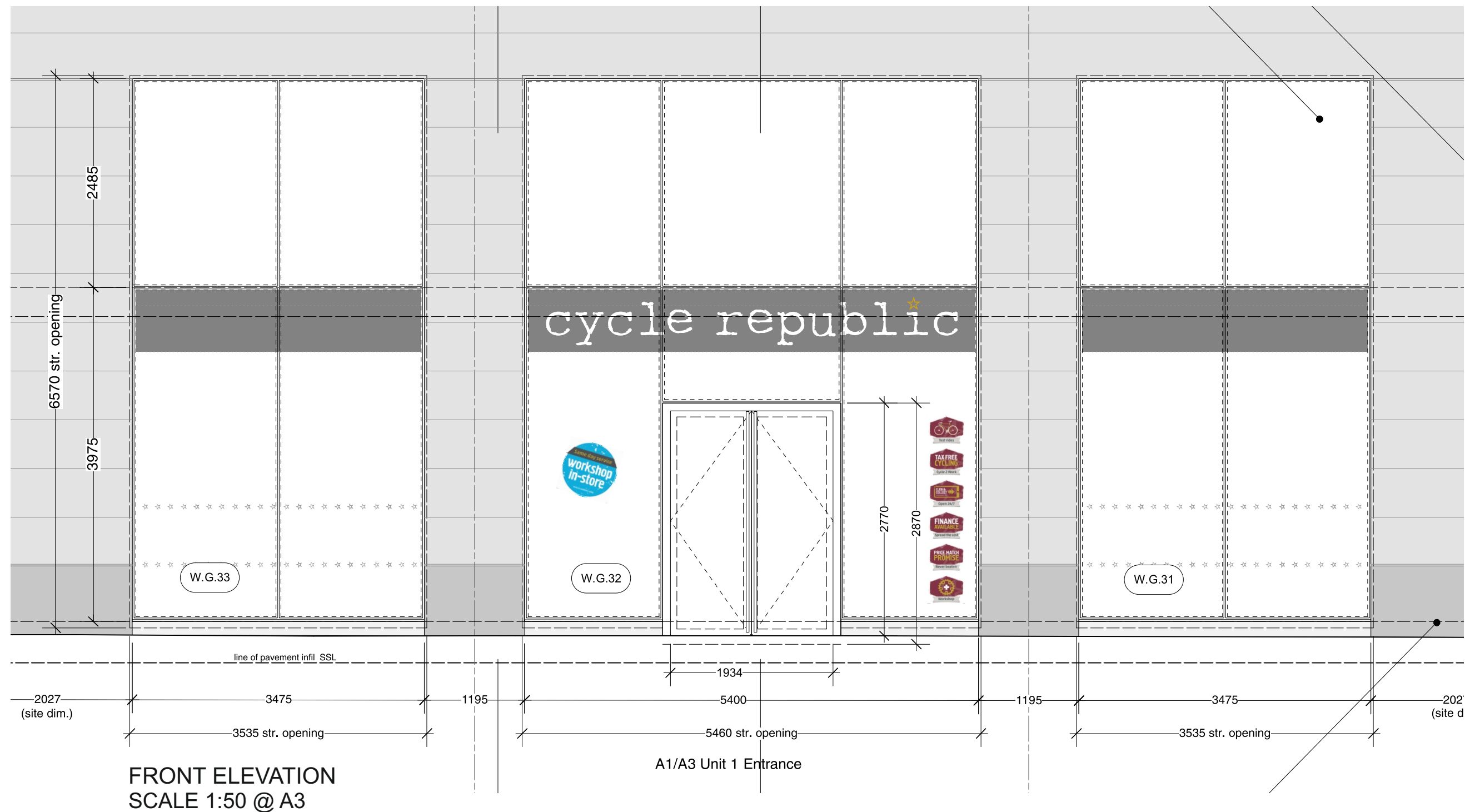
FRONT ELEVATION
SCALE 1:100 @ A3

Portland Roach stone plinth with insulation to rear and nominal cavity **H51-TYPE B**

GREY VINYL APPLIED TO REAR OF GLAZING

GREY VINYL APPLIED TO REAR OF GLAZING

SIGN B



FILE EXT.	IA-Z Projects\CYCLE REPUBLIC\CYCLE REPUBLIC 023_BLOOMSBURY_REV 04	DWG No.	CYCLE REPUBLIC 023_BLOOMSBURY_REV 04	REVISIONS: REV_00_INITIAL PRESENTATION REV_01_OPTIONS AS REQUESTED REV_02_OPTIONS AS REQUESTED REV_03_OPTION 1 APPROVED REV_04_AS PER PLANNING RESTRICTION	DRAWING APPROVAL:
CLIENT	CYCLE REPUBLIC	DATE	08-10-15		APPROVED BY:
ADDRESS	BLOOMSBURY	JOB No.	#####		APPROVED BY:
DRAWN BY	J.KING	SCALE	1:50 @ A3		