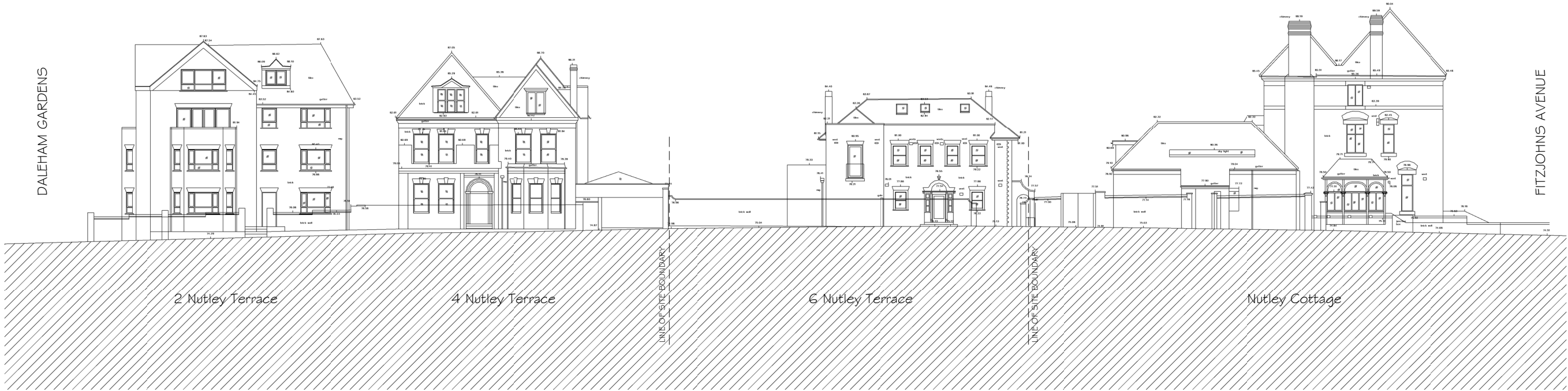
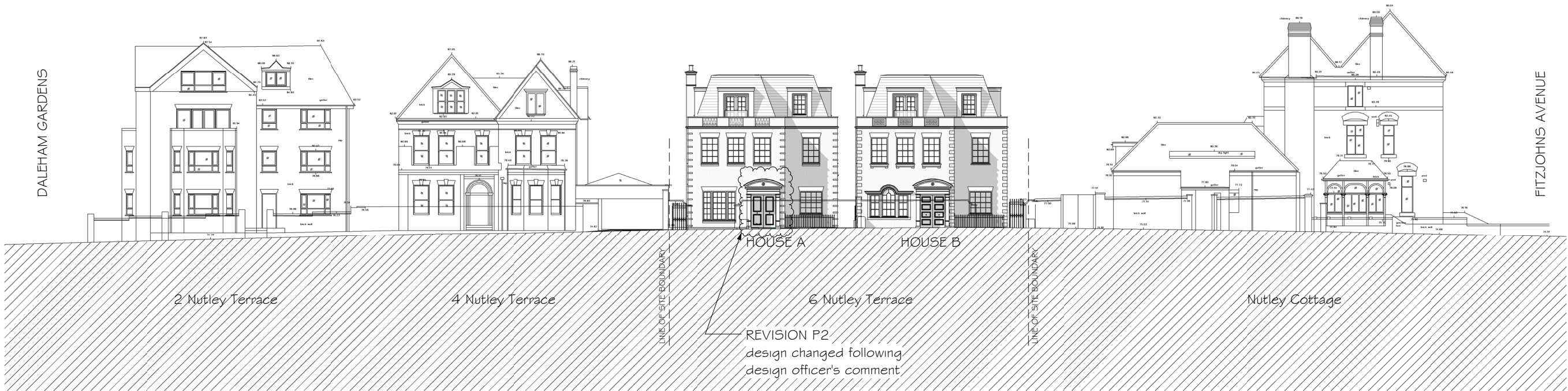


General notes:
 This drawing is copyright of KSR architects. The drawings must be read in conjunction with specifications and all other relevant documentation and drawings.
 KSR Architects accept no liability for any expense, loss or damage of whatsoever nature and however arising from any variation made to this drawing or in the execution of the work to which it relates which has not been referred to them and their approval obtained.
 Check all dimensions on site prior to carrying out any works.

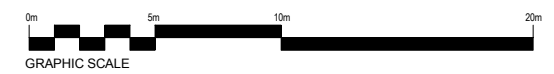
Notes/Legends



EXISTING STREET (NORTH) ELEVATION



PROPOSED STREET (NORTH) ELEVATION



P2 Entrance canopy design change (House A) 20.07.12 SHY RS
 P1 Planning Application Submission 08.05.12 SHY RS

Rev: Issues: 08.05.12 SHY RS

© KSR architects

Stamp: **PLANNING**

Key Plan:



KSR architects
 14 Greenlands Street
 London
 NW1 2ND
 t +44 (0)20 7692 5000
 f +44 (0)20 7692 5050
 www.ksr-architects.com

Project:
6 NUTLEY TERRACE
 London NW3 5BX

Title:
STREET ELEVATIONS

Date: MAY 2012 Drawn By: SHY Check/ed: RS

Scale: 1 : 150 @A1 / 1 : 300 @A3

Project Ref:	Drawing No:	Revision:
NUT	NUT-015	P2