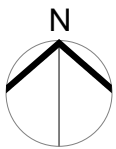


Ordnance Survey, (c) Crown Copyright 2011. All rights reserved. Licence number 100020449



1:1250 @ A4

<p>General notes:</p> <p>This drawing is copyright of KSR architects. The drawings must be read in conjunction with specifications and all other relevant documentation and drawings. KSR architects accept no liability for any expense, loss or damage of whatsoever nature and however arising from any variation made to this drawing or in the execution of the work to which it relates which has not been referred to them and their approval obtained. All technical compliance and statutory approvals to be obtained by a directly appointed Russian architect. Check all dimensions on site prior to carrying out any works.</p>		<p>KSR architects 14 Greenland Street London NW1 0ND</p> <p>t: + 44 (0)20 7692 5000 f: + 44 (0)20 7692 5050 www.ksr-architects.com</p>										
		<p>Project:</p> <p>6 NUTLEY TERRACE London NW3 5BX</p>		<p>Title:</p> <p>LOCATION PLAN</p>								
<p>PLANNING</p>		<p>Rev</p>	<p>Notes</p>	<p>dd mm yy</p>	<p>By</p>	<p>Crkd</p>	<p>Date: SEPT 2011</p>	<p>Drawn By: SHY</p>	<p>Checked: SHY</p>	<p>Project Ref:</p> <p>NUT</p>	<p>Drawing No:</p> <p>NUT-L01</p>	<p>Revision:</p>
		<p>© KSR architects</p>				<p>Scale: 1:1250 @A4</p>						