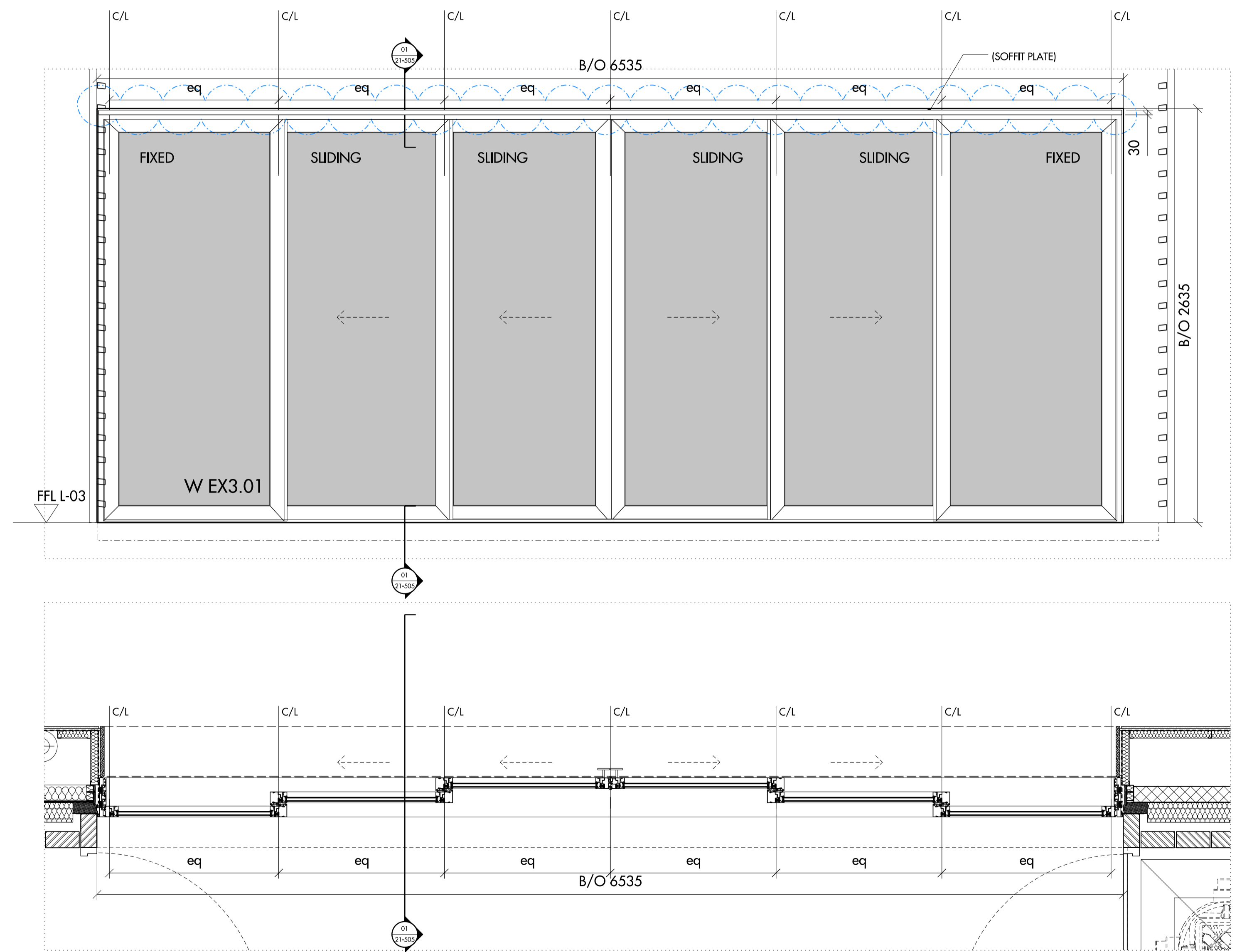
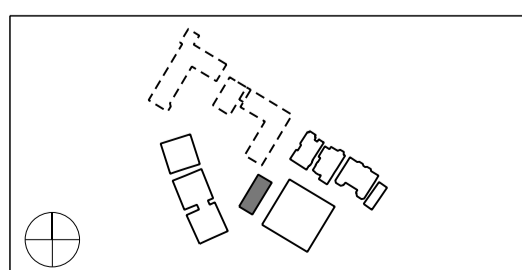


01 WIN - 320
W.E.X2.05



01 WIN - 321
W.EX3.01



Do not scale from this drawing. Use figured dimensions only. Figured dimensions are in millimetres. All levels are in metres. All dimensions and levels shall be verified on site before proceeding with works. Detailed site survey to be carried out to verify positions and level relationships with site features and ordnance survey. Boundaries are indicative only and are to be verified by others. The architect must be notified of any discrepancy. Where building components are described in the specification as 'descriptive', then 'construction' information relating to those components on this drawing represent design intent only.

REV	DATE	DESCRIPTION	CKD	REV	DATE	DESCRIPTION	CKD
T1	24.07.2015	ISSUED FOR INFORMATION(PRE-CONSTRUCTION)	NR				
T2	05.08.2015	UPDATED FOR COORDINATION(WIN-320 WIN-321)	NR				
T3	13.08.2015	UPDATED FOR INFORMATION(WIN-320 WIN-321)	NR				
C1	18.09.2015	UPDATED FOR CONSTRUCTION	NR				

NOTES:
For technical requirements refer to window specification:
809_10_WIN_Window systems
To be read in conjunction with:
809_03_06_150 series setting out drawings
809_03_21 series drawings
809_03_10_Block E_window schedule

Allies and Morrison
85 Southwark Street
London SE1 0HX
020 7921 0100
020 7921 0101
info@alliesandmorrison.co.uk
A&M JOB NO: 809

KIDDERPORE AVENUE : BLOCK E
WINDOW TYPES-SHEET 2
EXTERNAL WALLS
809_03_21_401
SCALE 1:20 @A1 1:40@A3