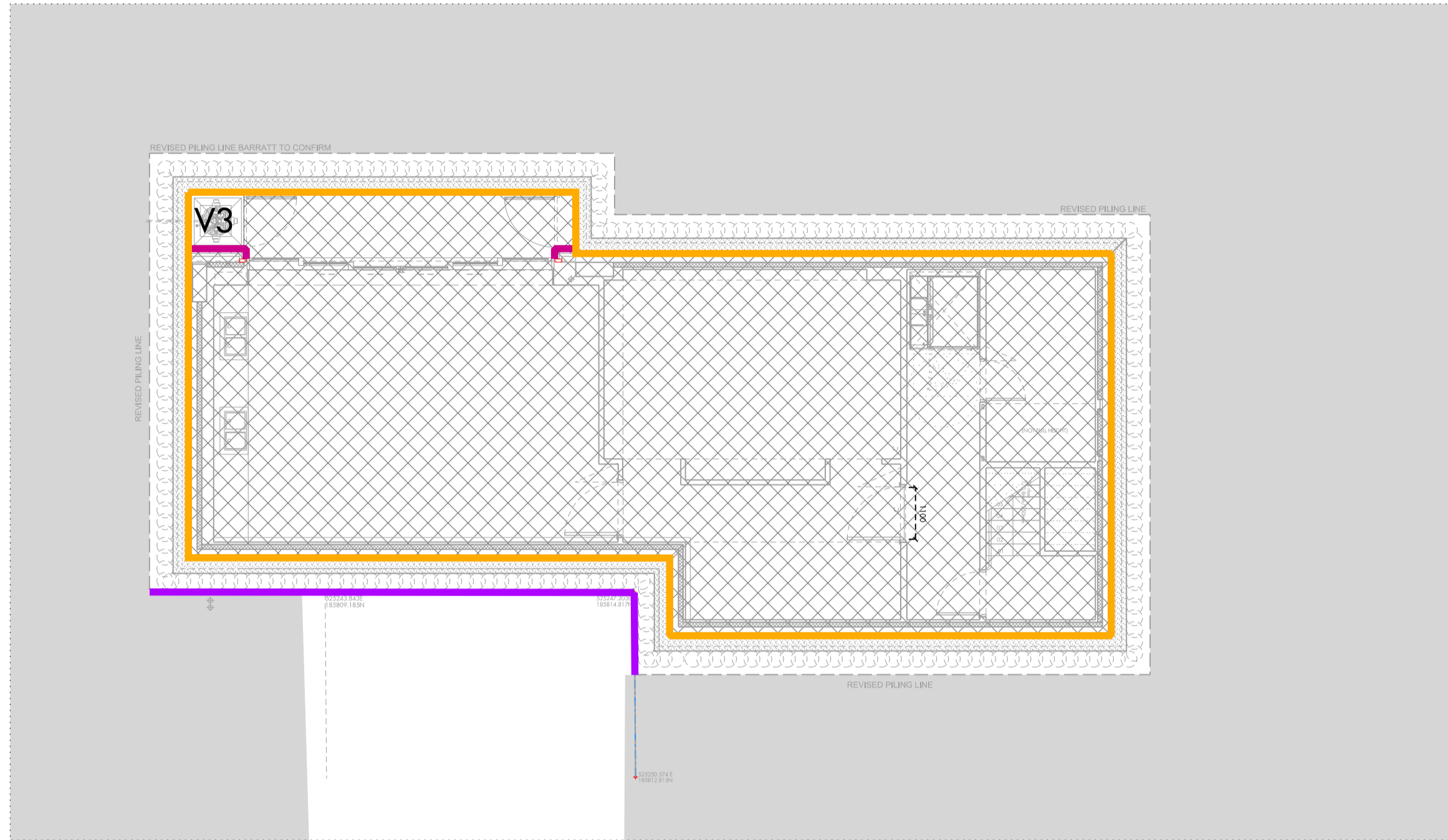


**NOTES:**  
 To be read in conjunction with:  
 809\_03\_06 series GA drawings  
 809\_03\_21\_100 external wall scope  
 809\_03\_06\_150 series setting out drawings  
 809\_03\_21 series external wall drawings  
 809\_03\_10\_01\_Block\_E\_window schedule

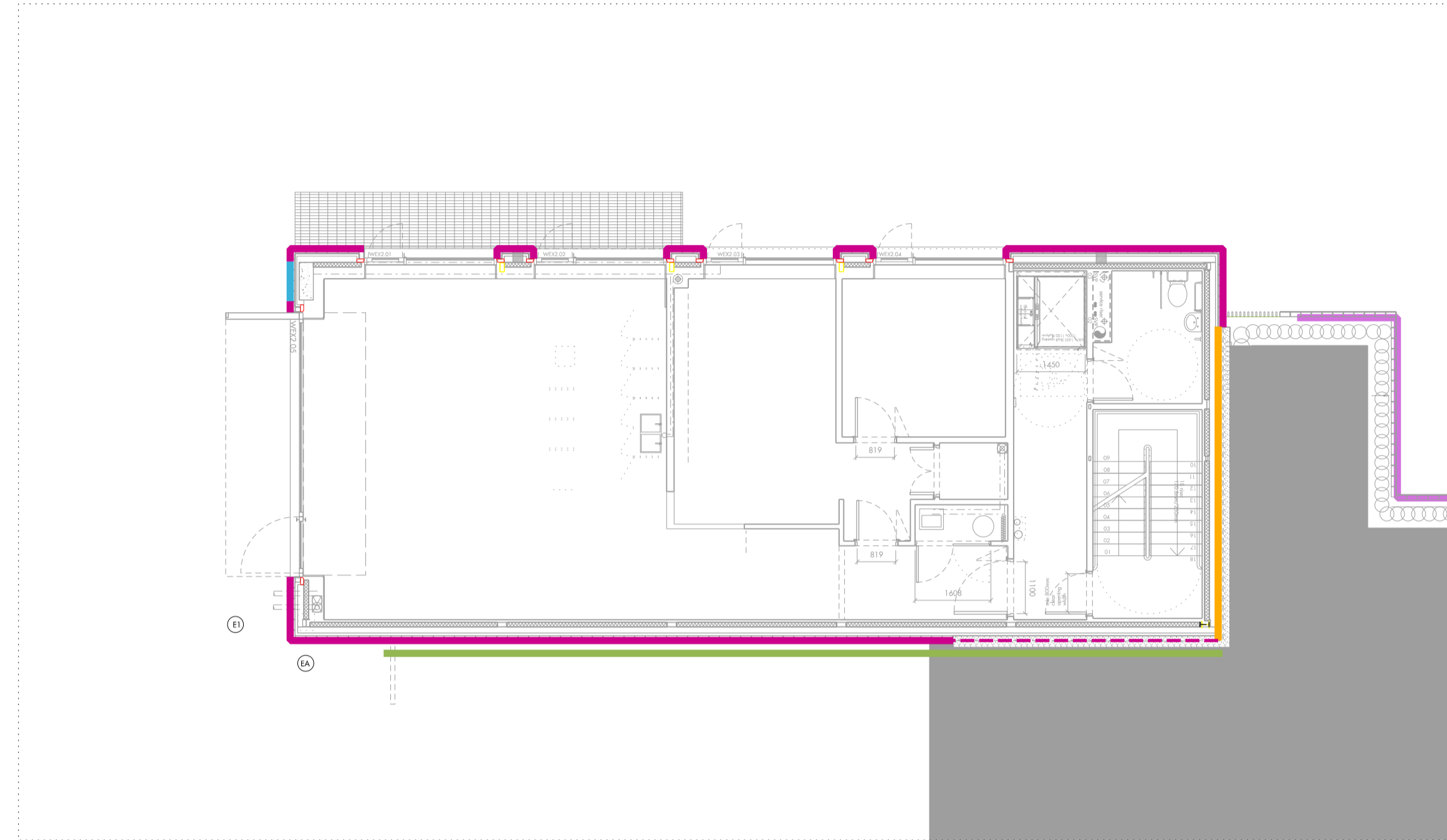
For technical requirements refer to specification:  
 809\_20\_EWS\_External wall system

Refer to structural engineer's drawings and specification for all masonry support and restraint such as masonry angles, brick ties, wall starters, reinforcement, lintels etc.

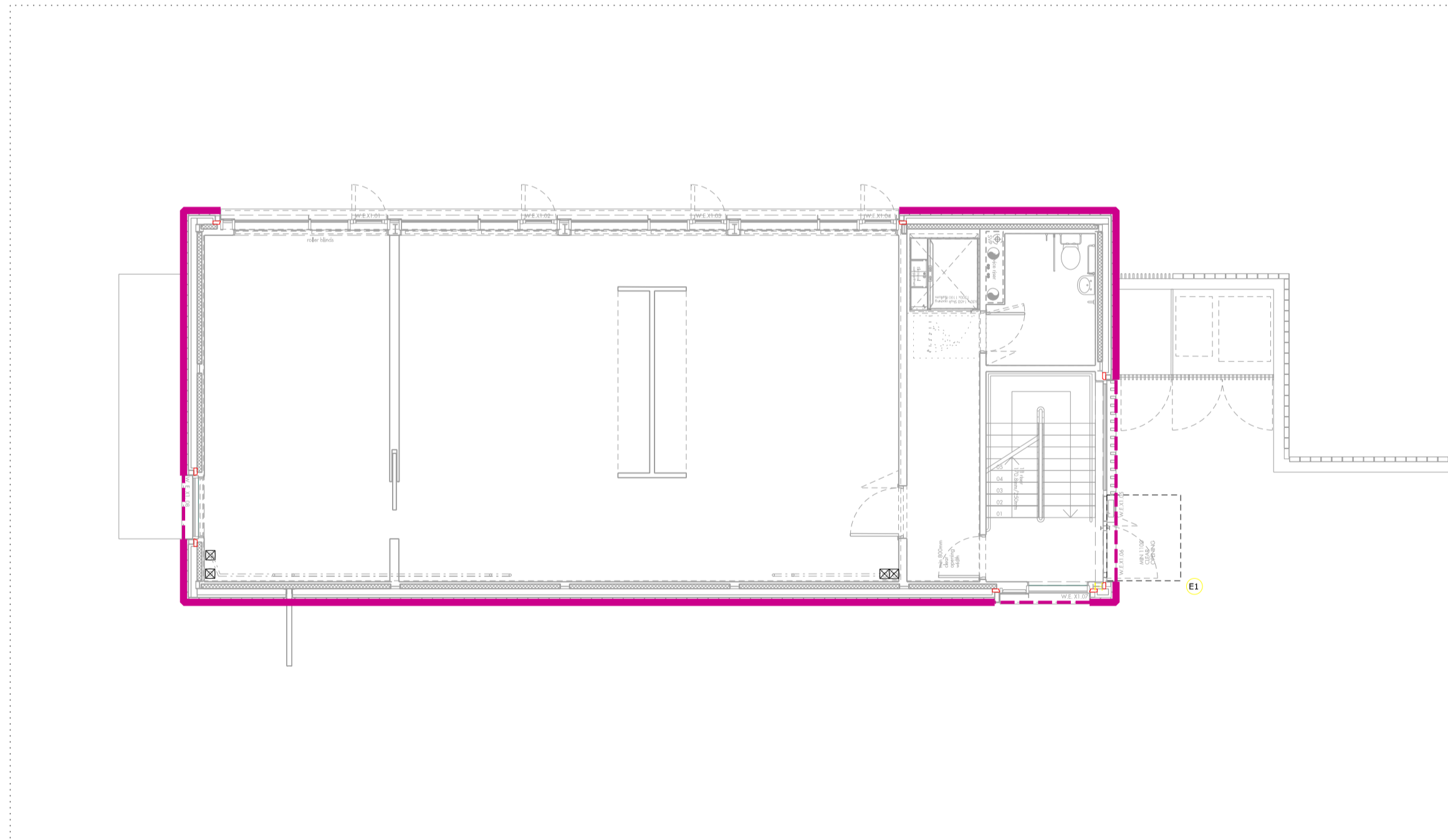
X = MINUS LEVEL FOR WINDOW REFS (eg. X1 = Site level -01)



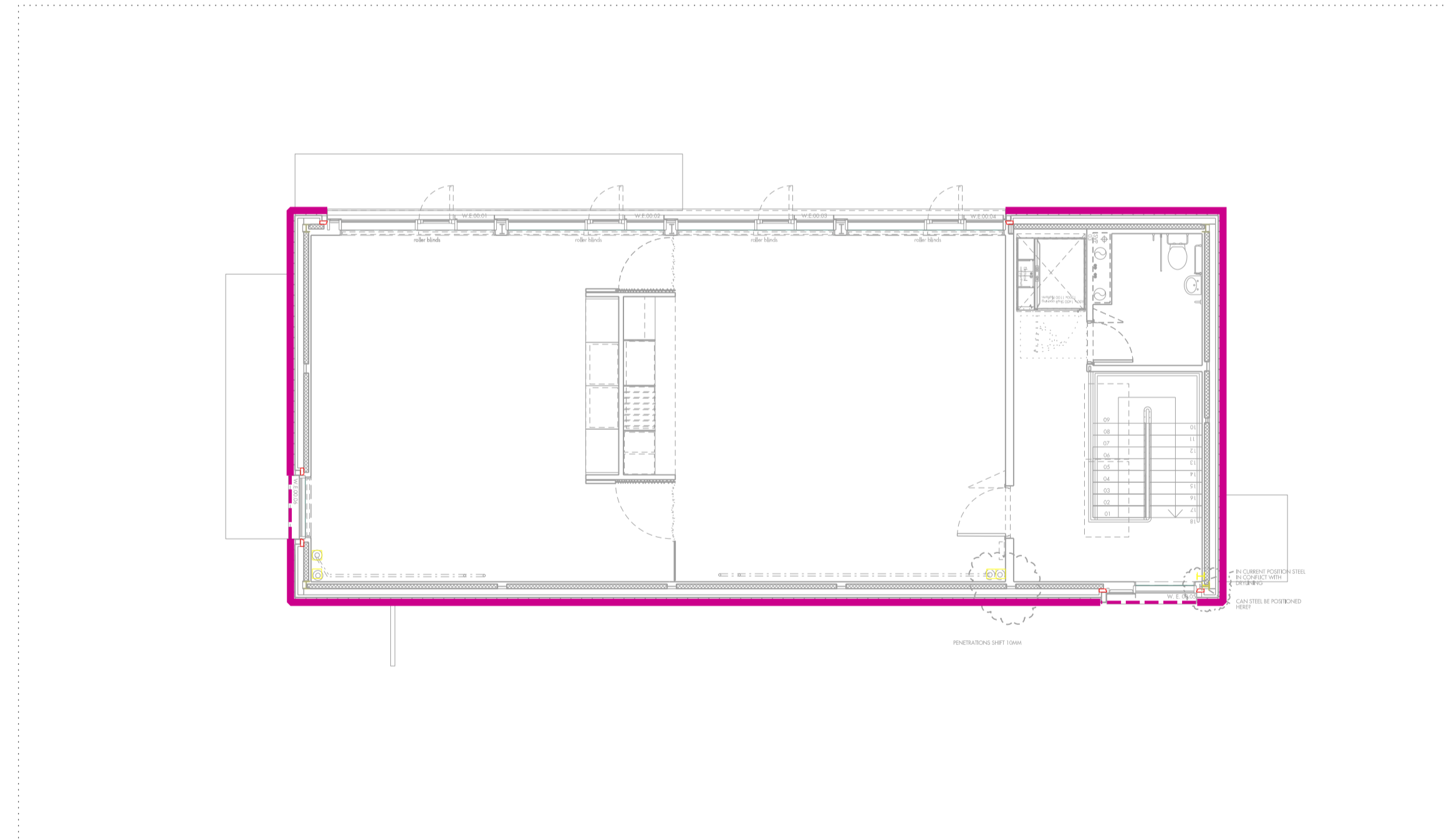
01 BASEMENT LEVEL  
 [SITE LEVEL -03]



02 GROUND FLOOR PLAN  
 [SITE LEVEL -02]



03 FIRST FLOOR PLAN  
 [SITE LEVEL -01]



04 SECOND FLOOR PLAN  
 [SITE LEVEL -00]

**KEY:**

**EXTERNAL WALL SYSTEM**

- EWS - 300 (dotted - above)
- EWS - 301
- EWS - 302
- EWS - 303

**WATERPROOFING SYSTEM**

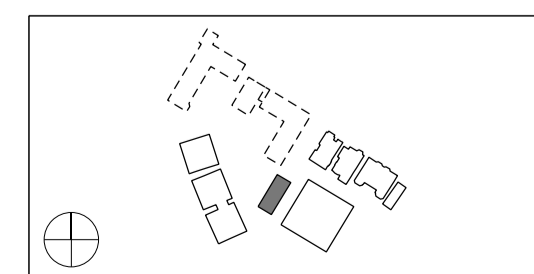
- BGW - 300
- BGW - 301
- BGW - 303

CAVITY DRAINAGE SYSTEM

V3 PUMP SYSTEM

**MASONRY SUPPORT**  
 Refer to Structural Engineer's drawings and specifications for details

MJ Movement joint



Do not scale from this drawing. Use figured dimensions only. Figured dimensions are in millimetres. All levels are in metres. All dimensions and levels shall be verified on site before proceeding with works. Detailed site survey to be carried out to verify positions and level relationships with site features and ordnance survey. Boundaries are indicative only and are to be verified by others. The architect must be notified of any discrepancy. Where building components are described in the specification as 'descriptive', then 'construction' information relating to those components on this drawing represent design intent only.

REV	DATE	DESCRIPTION	CKD	REV	DATE	DESCRIPTION	CKD
TI	31.07.2015	ISSUED FOR INFORMATION (PRE-CONSTRUCTION)	NR				
CI	18.09.2015	ISSUED FOR CONSTRUCTION	NR				

Alles and Morrison  
 85 Southwark Street  
 London SE1 0HX  
 020 7921 0100  
 020 7921 0101  
 info@allesandmorrison.co.uk

telephone  
 facsimile  
 email

A&M JOB NO: 809

KIDDERPORE AVENUE  
 BLOCK E : EXTERNAL WALL PLAN  
 EXTERNAL WALL SCOPE  
 & BELOW GROUND WATERPROOFING  
 809\_03\_21\_100

SCALE 1:100@A1 1:200@A3

C1  
 Revision