

Dexter Moren Associates
for
West London Mission Circuit
of the Methodist church (WLM)

King's Cross Methodist Church

design & access statement

London Borough of Camden
December 2015

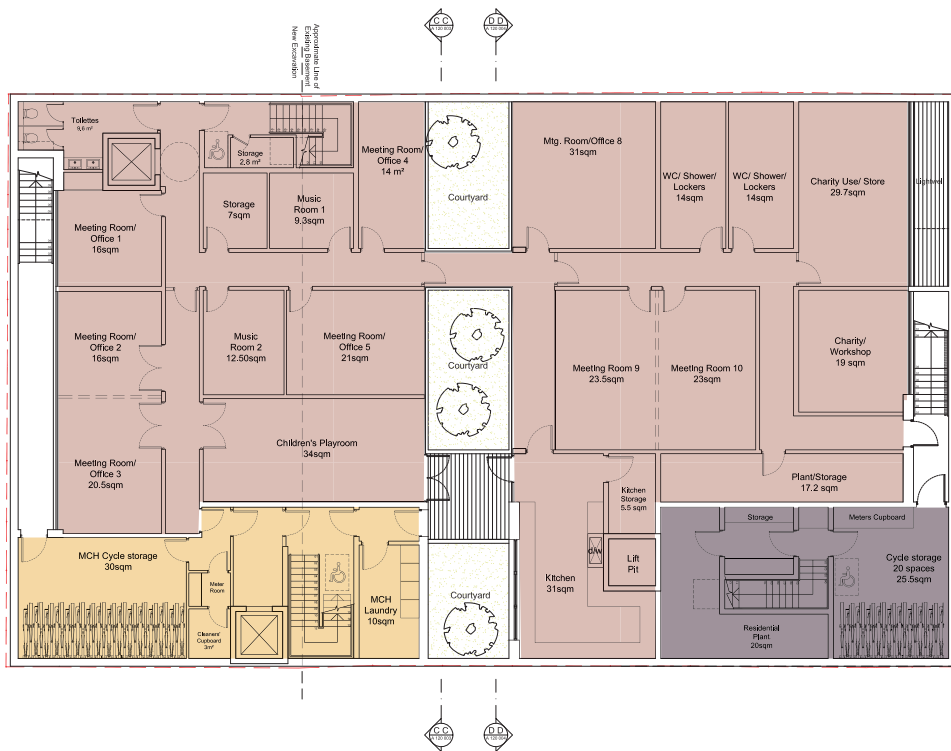
part 03 of 04



06h proposed floorplans

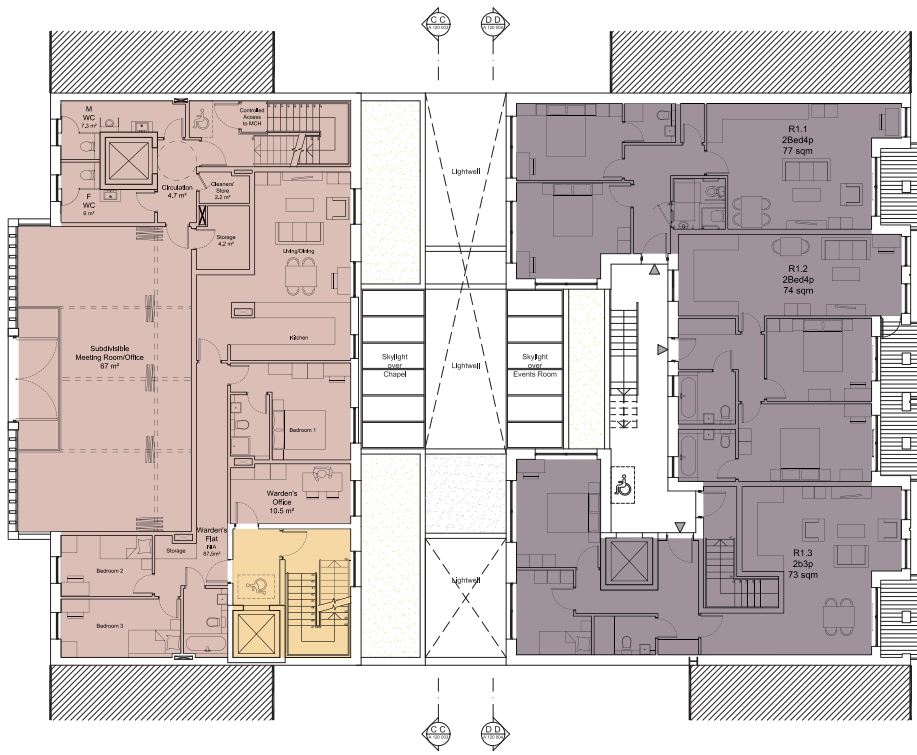


- MCH
- Church / Charity
- Private Housing

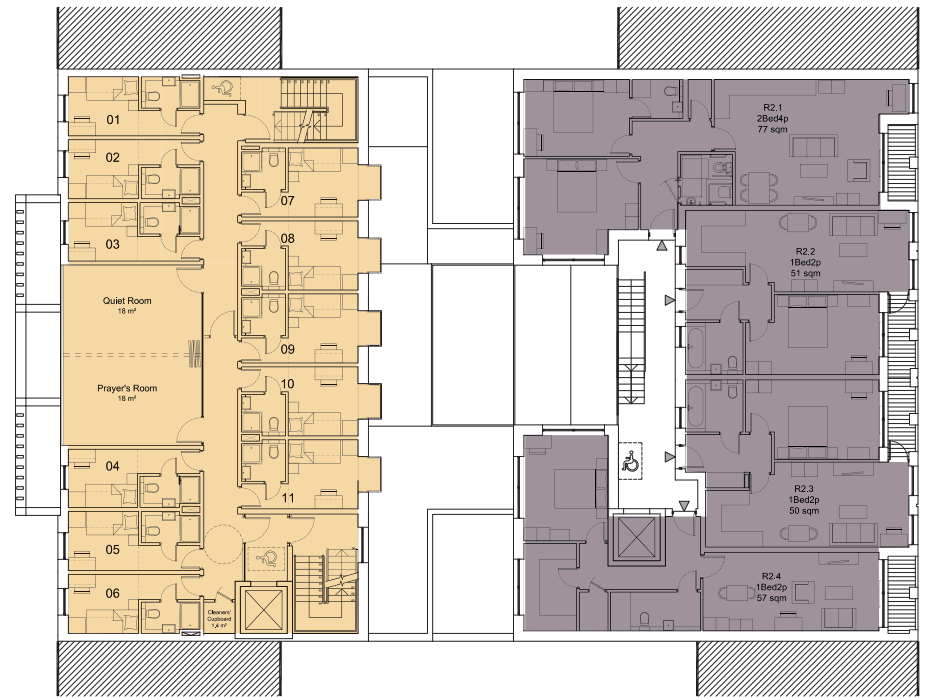
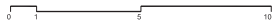




- MCH
- Church / Charity
- Private Housing



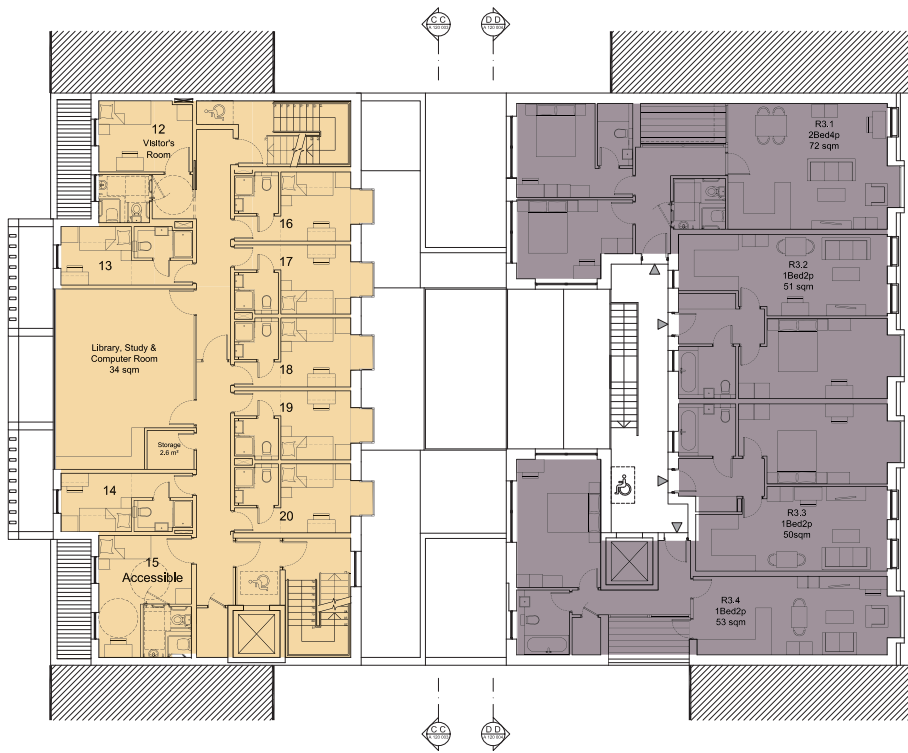
First Floor
 Scale 1:200 @A3
 1:100 @A1



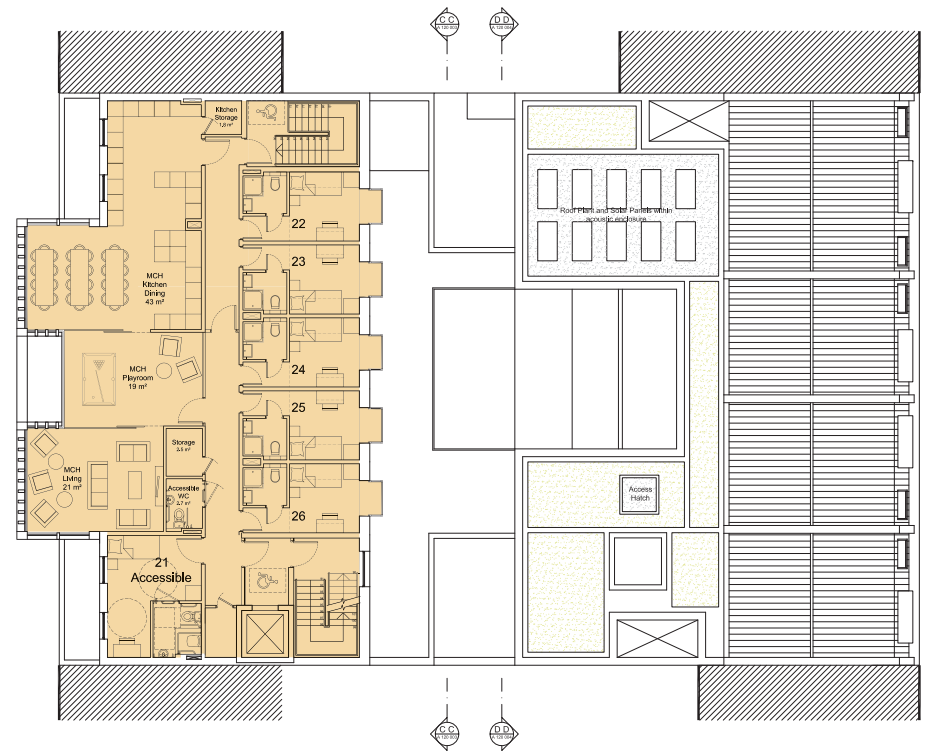
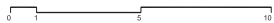
Second Floor
 Scale 1:200 @A3
 1:100 @A1



- MCH
- Church / Charity
- Private Housing



Third Floor
 Scale 1:200 @A3
 1:100 @A1



Fourth Floor
 Scale 1:200 @A3
 1:100 @A1

King's Cross Methodist Church

Proposed Gross Internal Areas (GIA)

Level	Church	MCH	Residential	Total
Basement				
Area (m ²)	489	83	70	642
Ground Floor				
Area (m ²)	540	51	50	641
First Floor				
Area (m ²)	234	13	239	486
Second Floor				
Area (m ²)	-	237	240	477
Third Floor				
Area (m ²)	-	223	247	470
Fourth Floor				
Area (m ²)	-	237	-	237
Total GIA m²	1263	844	846	2953 m²

King's Cross Methodist Church

Overall GEA Schedule.

Level	Church	MCH	Residential	Total
Basement				
Area (m ²)	518	90	75	683
Ground Floor				
Area (m ²)	575	55	56	686
First Floor				
Area (m ²)	257.5	13.5	278	549
Second Floor				
Area (m ²)	-	261.5	279.5	541
Third Floor				
Area (m ²)	-	245.5	282	527.5
Fourth Floor				
Area (m ²)	-	261	-	261
Total GEA	1350.5 m²	926.5 m²	970.5 m²	3247.5 m²

King's Cross Methodist Church

Existing Gross Internal Areas (GIA)

Level	Church/MCH
Basement	
Area (m ²)	305
Ground Floor	
Area (m ²)	503
First Floor	
Area (m ²)	522
Second Floor	
Area (m ²)	258
Total Existing	
GIA m ²	1588

Residential Accommodation

Net Internal Areas (NIA) &
Unit Schedule for 1st - 3rd floors

Level				
First Floor	R1.1	R1.2	R1.3	
Area (m ²)	77	74	73	
Unit Type	2b/4p*	2b/4p	2b/3p	
Amenity(m ²)	4.5	8	4.5	
Second Floor	R2.1	R2.2	R2.3	R2.4
Area (m ²)	77	51	50	57
Unit Size	2b/4p*	1b/2p	1b/2p	1b/2p
Amenity(m ²)	3.5	3.5	3.5	3.5
Third Floor	R3.1	R3.2	R3.3	R3.4
Area (m ²)	72	51	50	53
Unit Size	2b/4p*	1b/2p	1b/2p	1b/2p
Amenity(m ²)	5	-	-	5

* Convertible to Wheelchair Accessible Units

** All units designed to Lifetime Homes Standards

Unit mix	
2b/4p	4
2b/3p	1
1b/2p	6

Total Units	11
Total NIA	685 m²

* 45% of 2 bedroom units complying with LBC priority target of 40%

06i accommodation & area schedules