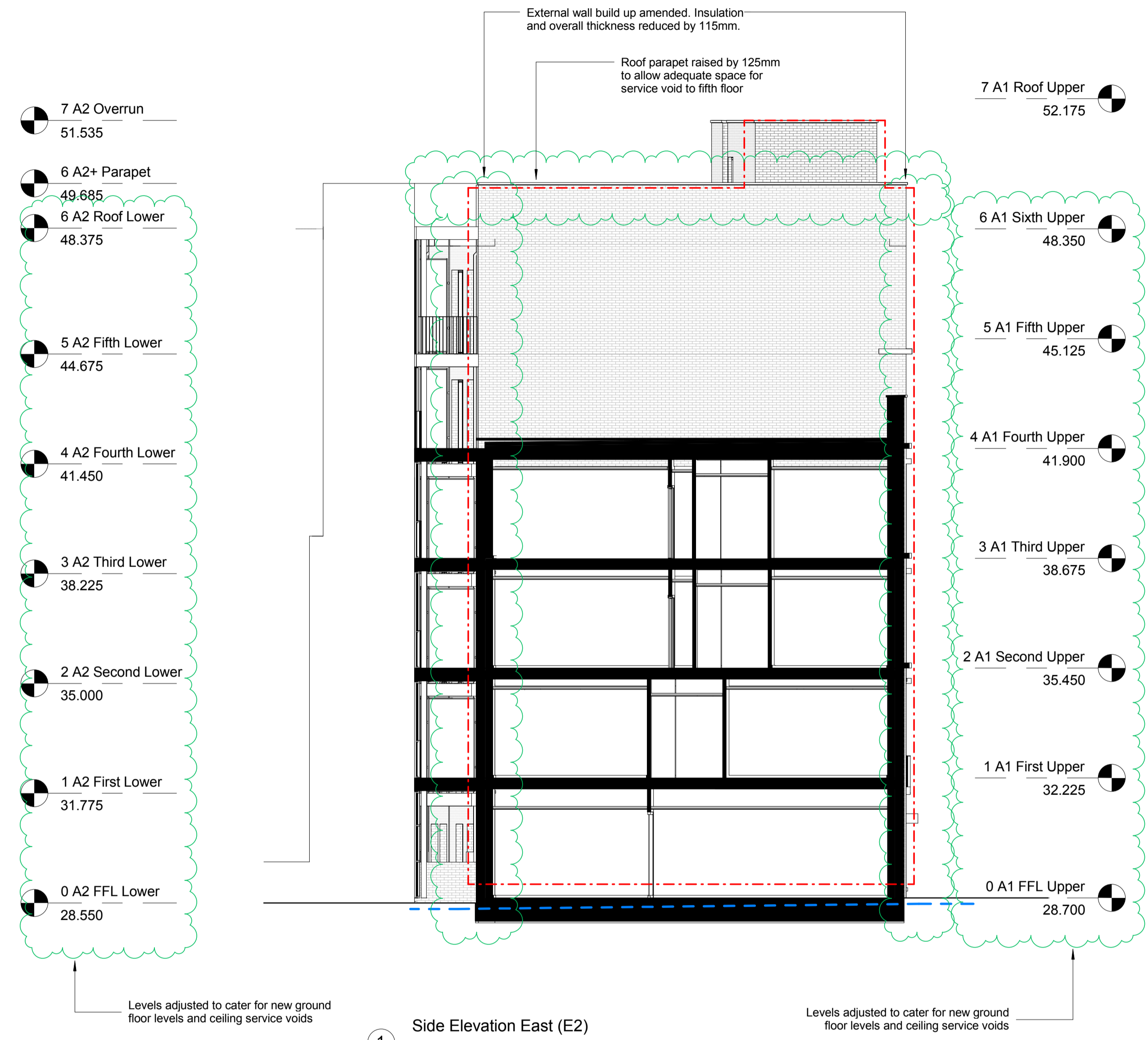
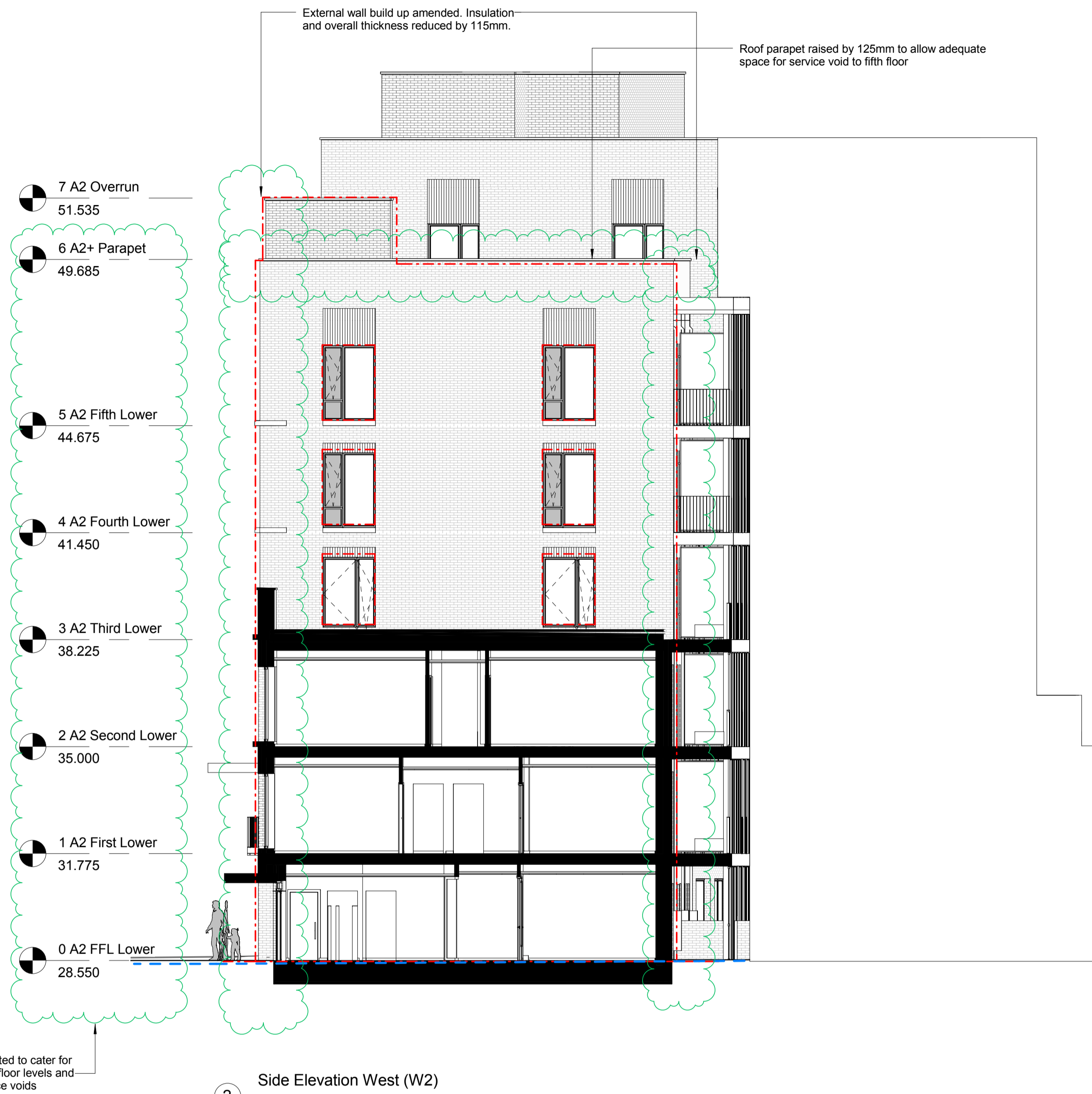


- Contract value engineered proposal
- - - Proposal approved Aug 2014
- - - Existing site level
- Existing buildings

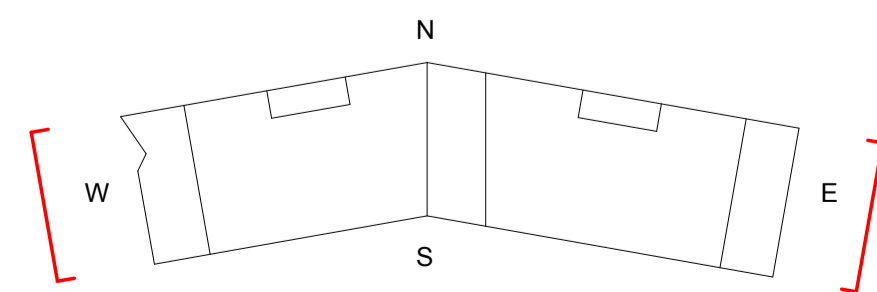


Plot A Material Specification

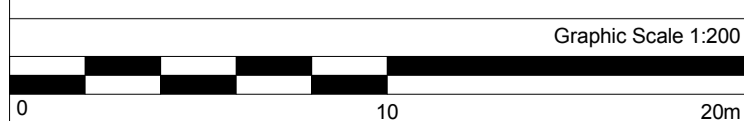
- 01 Brick type used throughout building (except as noted below). Janinhof - 8C - laid unless where indicated stretcher bond. Mortar & pointed as sample panel.
- 02 Bricks to North elevation below second floor stone band to be: Janinhof Clinker - 10C - laid with alternate course expressed by 25mm max (ribbed texture).
- 03 Stair cores and lift over runs/roof access elements expressed with Janinhof 8C - laid with alternate course expressed by 25mm max (ribbed texture).
- 04 Vertical stretcher bond to window heads.
- 05 Terrace walls to be: Janinhof - 8C - laid as garden wall band (note headers not to be left open as this provides child climbing opportunity).
- 07 Stone work to cantilevered canopy to be reconstituted stone / GRC canopy. Colour - light grey as sample.
- 08 Cantilevered reconstituted stone / GRC canopy with recessed ventilation to maisonette entrances. Colour - light grey as sample.
- 09 Balcony ledge to be wet cast concrete / reconstituted stone / GRC. Colour - light grey as sample.
- 10 Window base, forming recessed seat - reconstituted stone / GRC. Colour - light grey as sample.
- 11 Stone banding to be - wet cast concrete / reconstituted stone / GRC. Colour - light grey as sample.
- 09 Stone banding to balcony to be - wet cast concrete / reconstituted stone / GRC. Colour - light grey as sample.
- 14 Clear glazed communal entrance door, with full height glazed window above. Door set to be PAS 24 Approved. Colour as approved sample.
- 15 High quality lighting to communal entrance areas.
- 16 Slip resistant decorative tile, pattern A to communal entrance floor and walls. The pattern extends to extent of overhead canopy externally.
- 18 Slip resistant decorative tile, pattern B to maisonette entrance threshold. Tile pattern extends externally, to extent of overhead canopy.
- 19 Refuse door - Perforated doors to window RAL colour
- 20 Solid core private entrance door, with clear glazed side light. Door set to be PAS 24 Approved. Colour as approved sample.
- 21 Clear glazed communal entrance door to garden, with clear glazed side panel. Door set to be PAS 24 Approved. Colour as approved sample.
- 22 Clear glazed window with solid side opening to match frame. Frame and opening side panel. Colour as approved sample.
- 23 Clear glazed balcony door. Colour as approved sample.
- 24 Window frame set back in window reveal, minimum set back 225mm.
- 25 Polyester powder coated steel section ballustrade. Colour to match window frames. Random ballustrade spacing.
- 26 Polyester powder coated steel section ballustrade. Colour Anthracite RAL 7016. Consistent ballustrade spacing.
- 27 Framed fixed thermowood timber slatted screens, finish stained black
- 29 Clear glazed window with recessed brickwork side panel.
- 30 Solid doors to stair core roof access.

Notes
Check this drawing is the latest revision.
Do not scale from this drawing.
Do not use the information on this drawing without checking all dimensions on site.
Do not use any areas indicated for either valuation, purchase, sale or any other form of legally binding contract.
Do not reproduce any part of this drawing without prior written consent.

- Habitat boxes Plot A**
- Sparrow boxes 16 no.
 - Swift boxes 4 no.
 - Black Redstart boxes 2 no.
 - Bat boxes 5 no.
- Plot A total: 27 no.**



NOTE: Box locations and specification as per ER's



Rev	Date	Description	Drawn	Checked
D	03.12.15	Added back material information	CD	IC
C	10.07.15	Update of bird / bat box locations on planning drawings	IC	CD
B	12.06.15	Update of drawing drawings to reflect the Contract Value Engineer Schedule	AP	EB
A	02.09.14	All information shown is in line with Stage E Tender drawings. Revision clouds indicate changes from previously approved planning drawings.	HB	



Project	Agar Grove Block A		
Client	Hill Partnership Ltd for Camden Council		
Dwg Title	Plot A - Side Elevations E2 & W2		
Dwg no.	1423_DWG_PL_A_00_253	Revision	D
Scale	1 : 100 @ A1	Date	Dec 2015
Drawn by	AP	Checked by	EB

FOR PLANNING