

NOTES:
 1. THIS DRAWING NOT TO BE SCALED. FIGURED DIMENSIONS ONLY TO BE TAKEN.
 2. SHOULD ANY DISCREPANCIES BE FOUND WITH THIS DRAWING, PLEASE INFORM THIS OFFICE.
 3. COPYRIGHT OF THIS DRAWING IS OWNED BY JMARCHITECTS.
 4. THIS DRAWING SHOULD BE READ IN CONJUNCTION WITH THE PROJECT HEALTH & SAFETY FILE AND ANY TASK BASED METHOD STATEMENTS



Notes:

Read in conjunction with service consultants drawings and specification and refer to all other relevant documentation

See W.C. layout drawings for setting out of W.C. ceilings

Smoke detectors and PIR's not shown - see services consultants drawings.

THIS DRAWING SUPERSEDES DRAWING L(00)115

Key:

- New bulkhead or plasterboard suspended ceiling. Height as specified. Where not specified, floor to ceiling height to be as great as possible.
- Plasterboard lining to structural concrete ceiling including beams.
- Assumed beam positions.

Notes:

Read in conjunction with service consultants drawings and specification and refer to all other relevant documentation

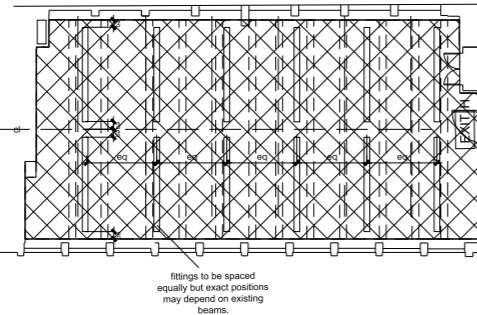
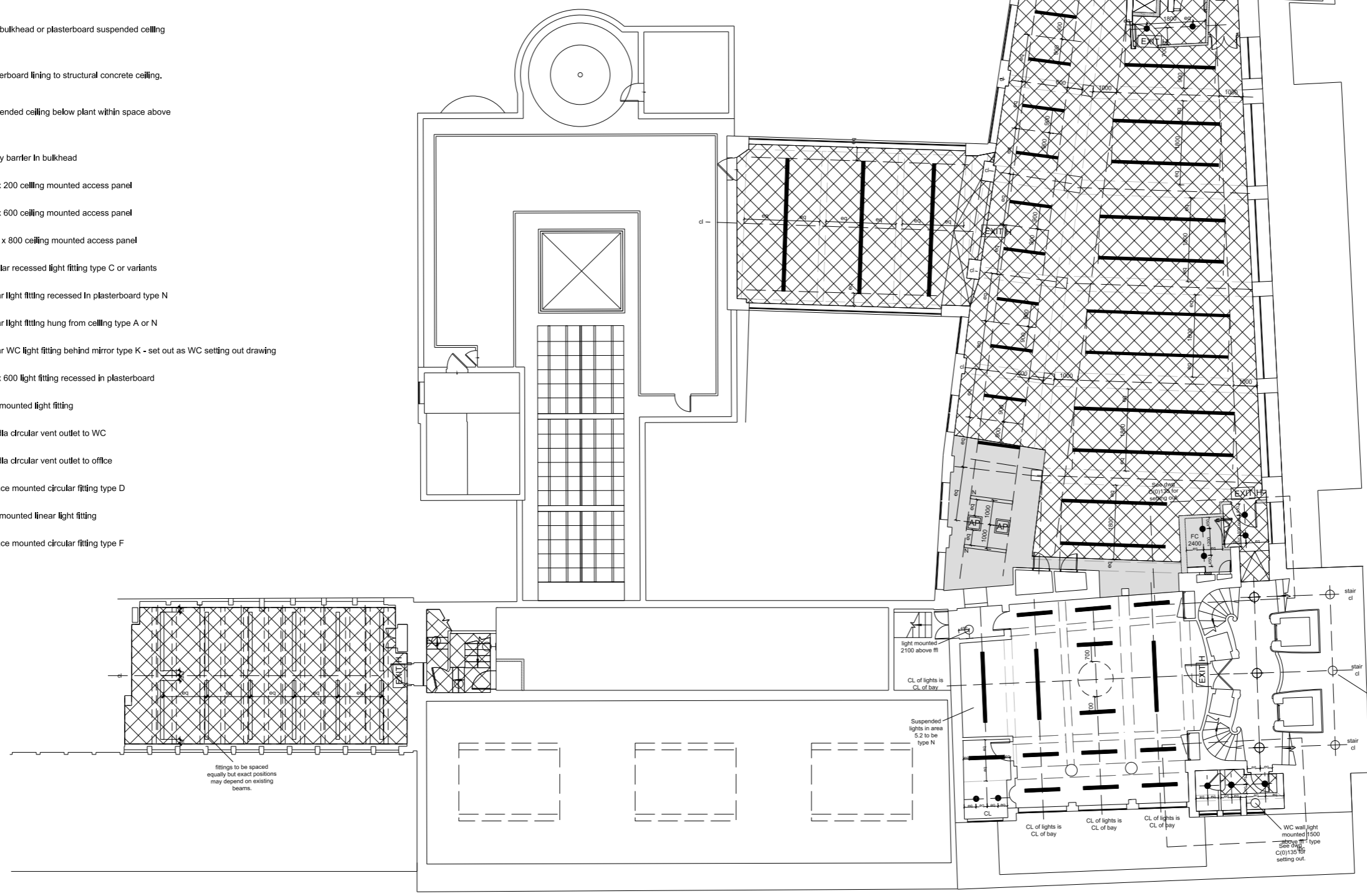
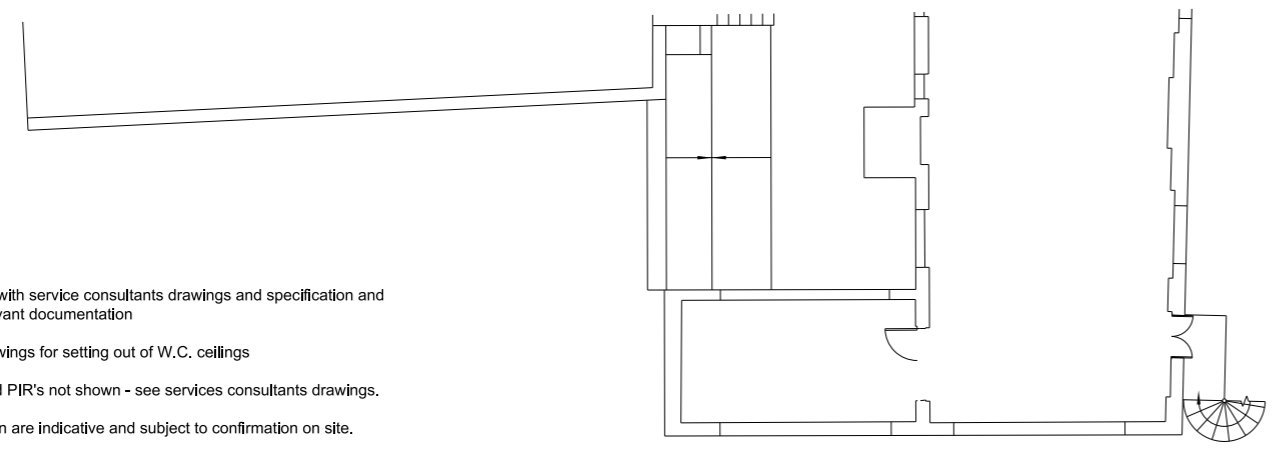
See W.C. layout drawings for setting out of W.C. ceilings

Smoke detectors and PIR's not shown - see services consultants drawings.

Ceiling heights shown are indicative and subject to confirmation on site.

Key:

- New bulkhead or plasterboard suspended ceiling
- Plasterboard lining to structural concrete ceiling.
- Suspended ceiling below plant within space above
- Cavity barrier in bulkhead
- 200 x 200 ceiling mounted access panel
- 600 x 600 ceiling mounted access panel
- 1200 x 800 ceiling mounted access panel
- Circular recessed light fitting type C or variants
- Linear light fitting recessed in plasterboard type N
- Linear light fitting hung from ceiling type A or N
- Linear WC light fitting behind mirror type K - set out as WC setting out drawing
- 600 x 600 light fitting recessed in plasterboard
- Wall mounted light fitting
- 200 dia circular vent outlet to WC
- 400 dia circular vent outlet to office
- Surface mounted circular fitting type D
- Wall mounted linear light fitting
- Surface mounted circular fitting type F



REV.	DESCRIPTION	DATE	DRN BY	CHK BY
C3	Final construction issue	22.07.15	AM	MB
C2	General design development changes & setting out of light fittings	11.06.15	AM	MB
T1	Tender issue	22.01.15	AR	AM

PROJECT
Heals Refurbishment Phase 2

TITLE
Phase 2B Fifth Floor Reflected Ceiling Plan

CLIENT
Threadneedle Property Investments Ltd

JOB No. 5354 DRAWING No. L(00)215 REVISION C2

SCALE 1:200 @ A3 DRAWN BY AR CHECKED BY AM

STATUS DATE 22/07/15

CONSTRUCTION

2nd Floor
 Threeways House
 40-44 Capstone Street
 London
 W1W 5DW

T: 0207 580 5330
 F: 0207 436 5348
 Ion@jmachitects.net
 www.jmachitects.net