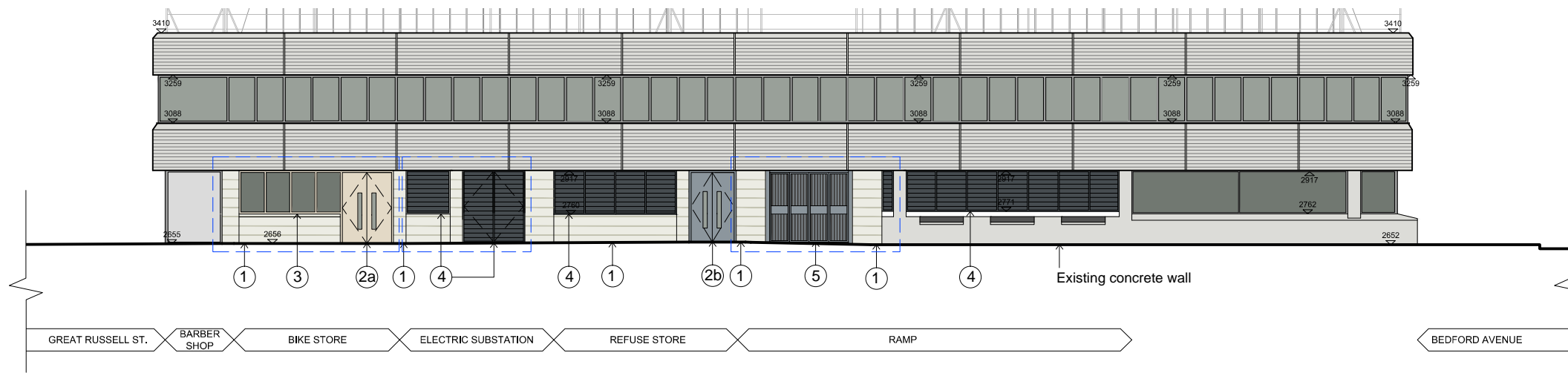
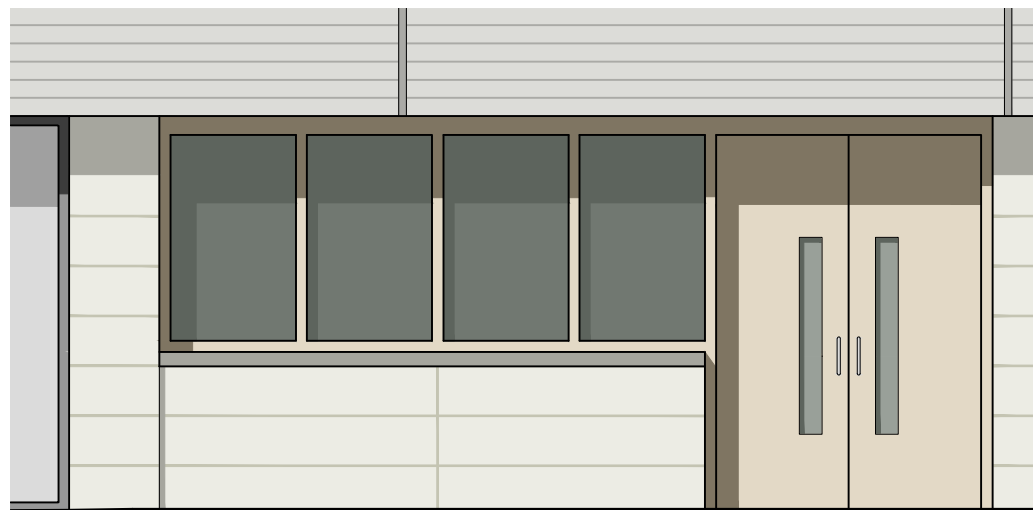


North East Elevation: Adeline Place scale 1:200

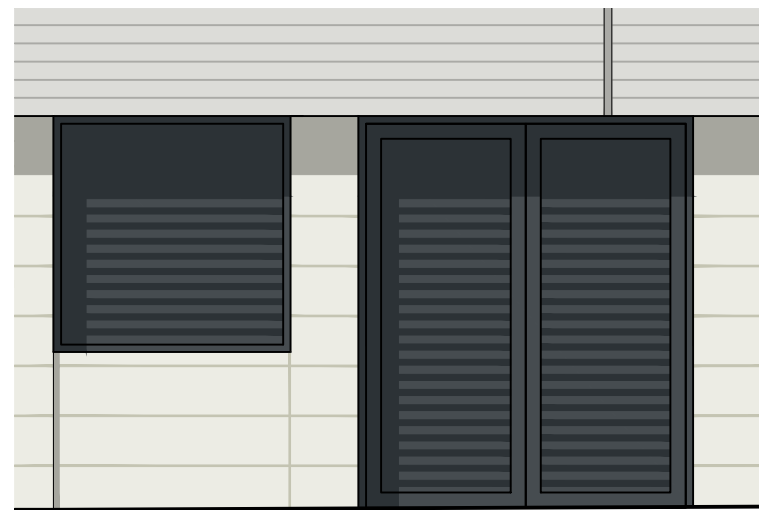


- MATERIAL KEY**
- ① Equitone (tectiva) fibre cement cladding panels or similar - colour T10 Linen.
 - ② Steel doorset with vision panel.
2a: Colour cream RAL 1015
2b: Colour light grey RAL 7001
 - ③ Aluminium framed window with frosted glass. Frame colour cream RAL 1015
 - ④ Ventilation louvre panel and door. Frame dark grey RAL 7016
 - ⑤ Bifolding metal security gates to ramp. Colour light grey RAL 7001

Bike Store Elevation scale 1:50



Electric Substation Elevation scale 1:50

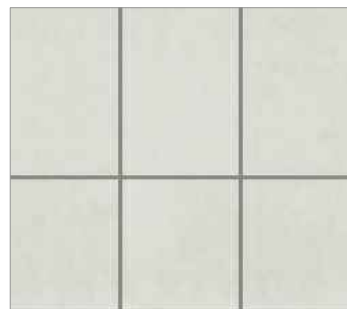


Ramp Entrance Gate Elevation scale 1:50



Branding for ramp entrance gate shown indicatively.

- ① Equitone (tectiva) fibre cement cladding panels or similar - colour T10 Linen.



- ② Steel doorset with vision panel.



- ④ Ventilation louvre panel and door. Colour dark grey RAL 7016



- ⑤ Bifolding metal security gates to ramp. Colour light grey RAL 7001



Example of gate to the service ramp.

Fibre cement cladding to be used to mirror the proportion of the banding on the facade of the hotel building opposite, with a similar colour used.

<table border="1"> <thead> <tr> <th>Rev</th> <th>Date</th> <th>Version Description</th> <th>Dm</th> <th>Chk</th> </tr> </thead> <tbody> <tr> <td>P1</td> <td>10.12.15</td> <td>Colours amended.</td> <td>EN</td> <td>JN</td> </tr> </tbody> </table>	Rev	Date	Version Description	Dm	Chk	P1	10.12.15	Colours amended.	EN	JN	<p>SAFETY, HEALTH AND ENVIRONMENTAL INFORMATION</p> <p>In addition to the hazards/risks normally associated with the types of work detailed on this drawing, refer to Designers Risk Assessment, note the following:</p> <p>It is assumed that all works will be carried out by a competent contractor working, where appropriate, to an approved method statement</p> <p>Use Dimensions - DO NOT SCALE</p> <p>Contractors Must Verify All Dimensions On Site Before Starting Work</p> <p>This Drawing is Copyright</p>	<p>Client Logo</p>	<p>dmwr Architects</p> <p>DMWR Architects Limited 16-18 Hatton Garden London EC1N 8AT</p> <p>t 0207 870 3779 e mail@dmwr.co.uk www.dmw.co.uk</p>	<p>Client Criterion Capital</p> <p>Project Name 112A Great Russell Street London, WC1B 3NP</p> <p>Drawing Title PROPOSED ELEVATIONS: North East Elevation</p>	<p>Drawing Status Planning Issue</p> <p>Drawing Details SFILES S04ATES</p> <table border="1"> <tr> <td>Drawn By EN</td> <td>Drawn Date 12/15</td> <td>Checked By JN</td> </tr> </table> <p>Drawing Number DMWR/A3/3233/PL-00300</p>	Drawn By EN	Drawn Date 12/15	Checked By JN	<p>North</p> <p>DMWR Job No. 3233</p> <p>Scale @ A3 1:100</p> <p>Revision P1</p>
Rev	Date	Version Description	Dm	Chk															
P1	10.12.15	Colours amended.	EN	JN															
Drawn By EN	Drawn Date 12/15	Checked By JN																	