

Surface mounted linear lights  
to be removed

Later internal plasterboard partitions  
to be removed and original room  
layouts reinstated

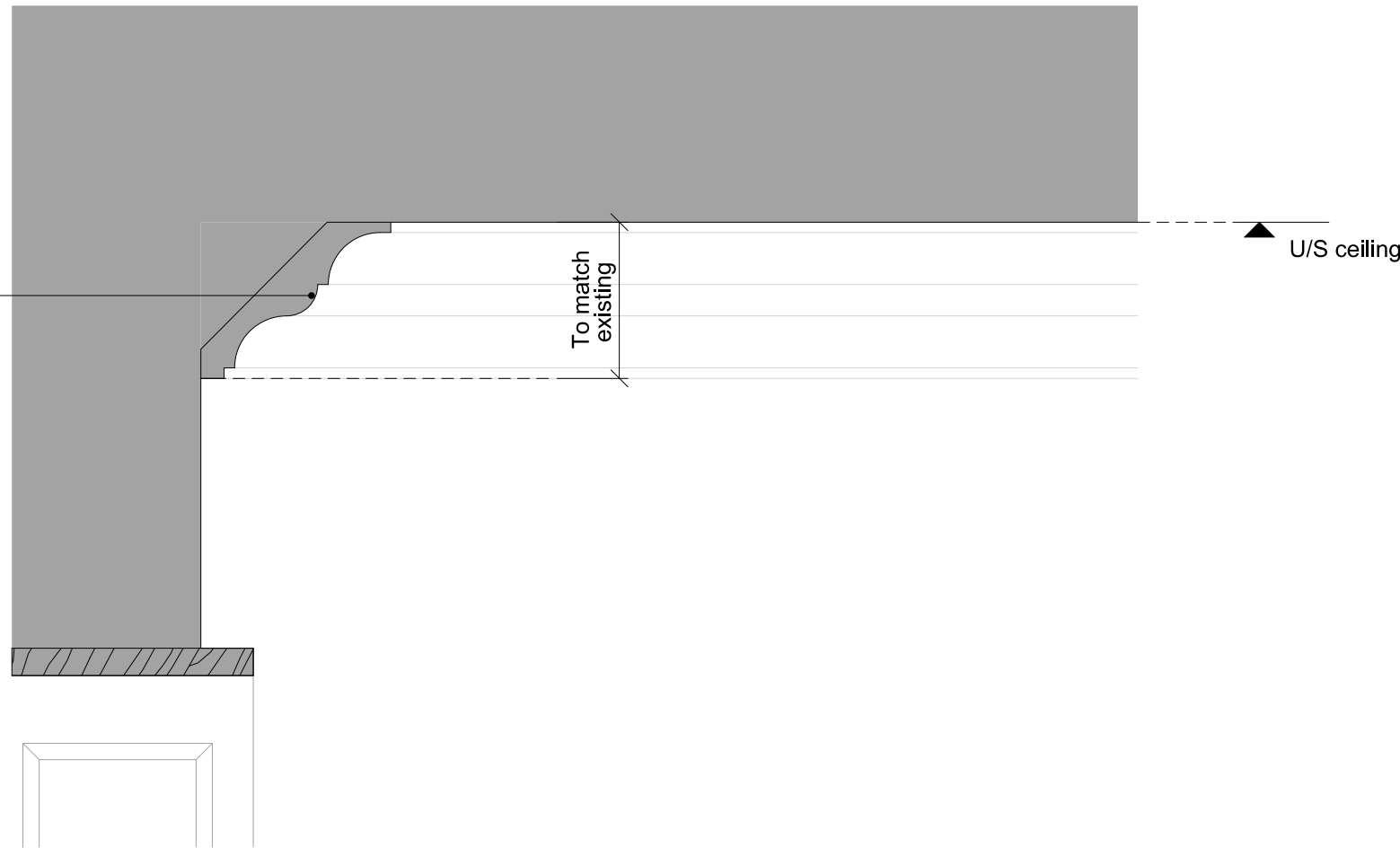
Internal linings in very poor condition  
generally with surface mounted  
conduits - finishes to be stripped  
back to original lath and plasterwork  
where possible following further site  
investigation and survey



PL-A  
018-13 No. 26 Denmark Street  
Existing internal room view showing typical coricing NTS

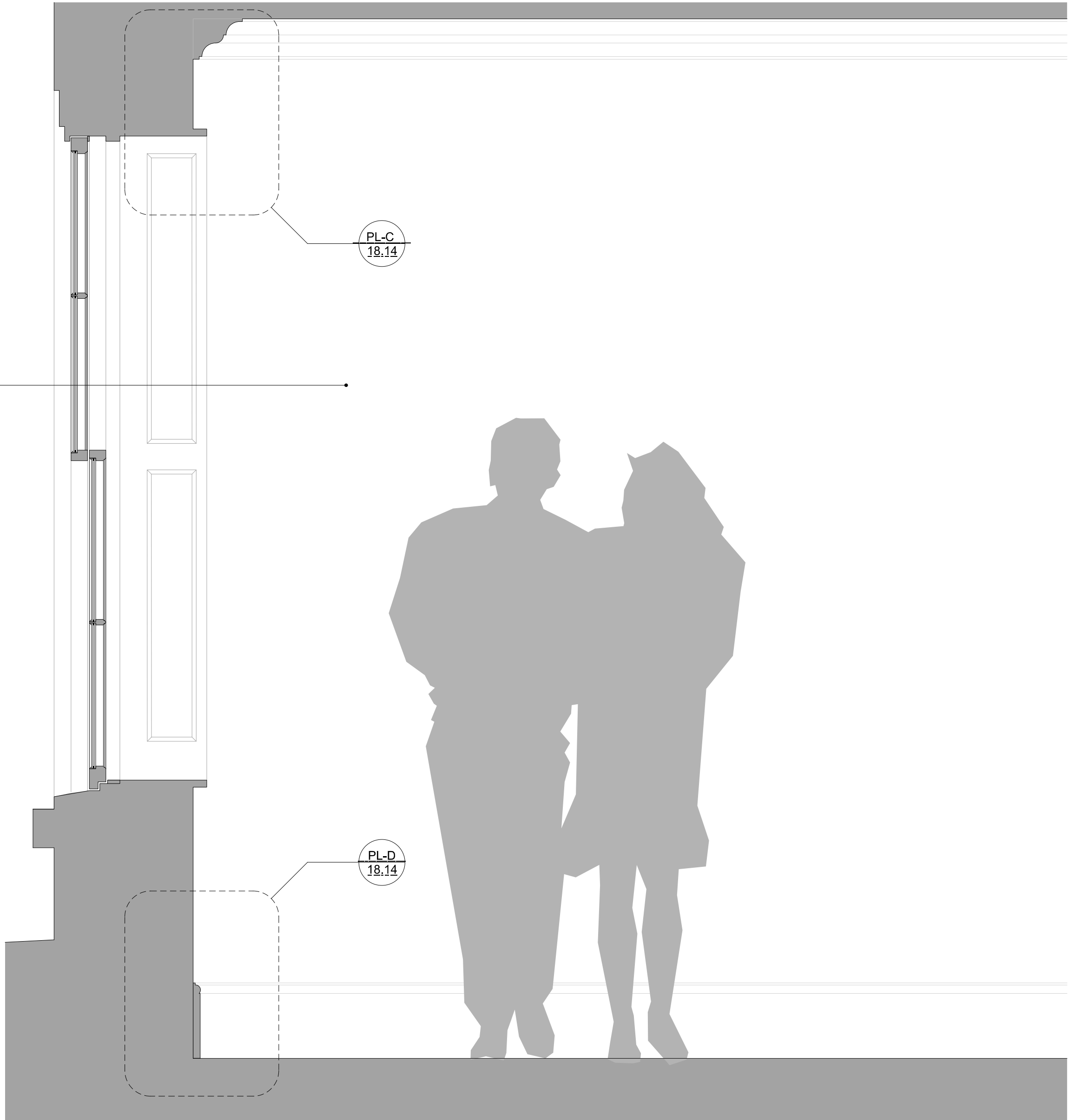
Existing plaster corinices to be  
retained and refurbished  
New lime plaster corinices with  
matching profile where  
missing/damaged

Later casement windows and  
surrounds to be removed



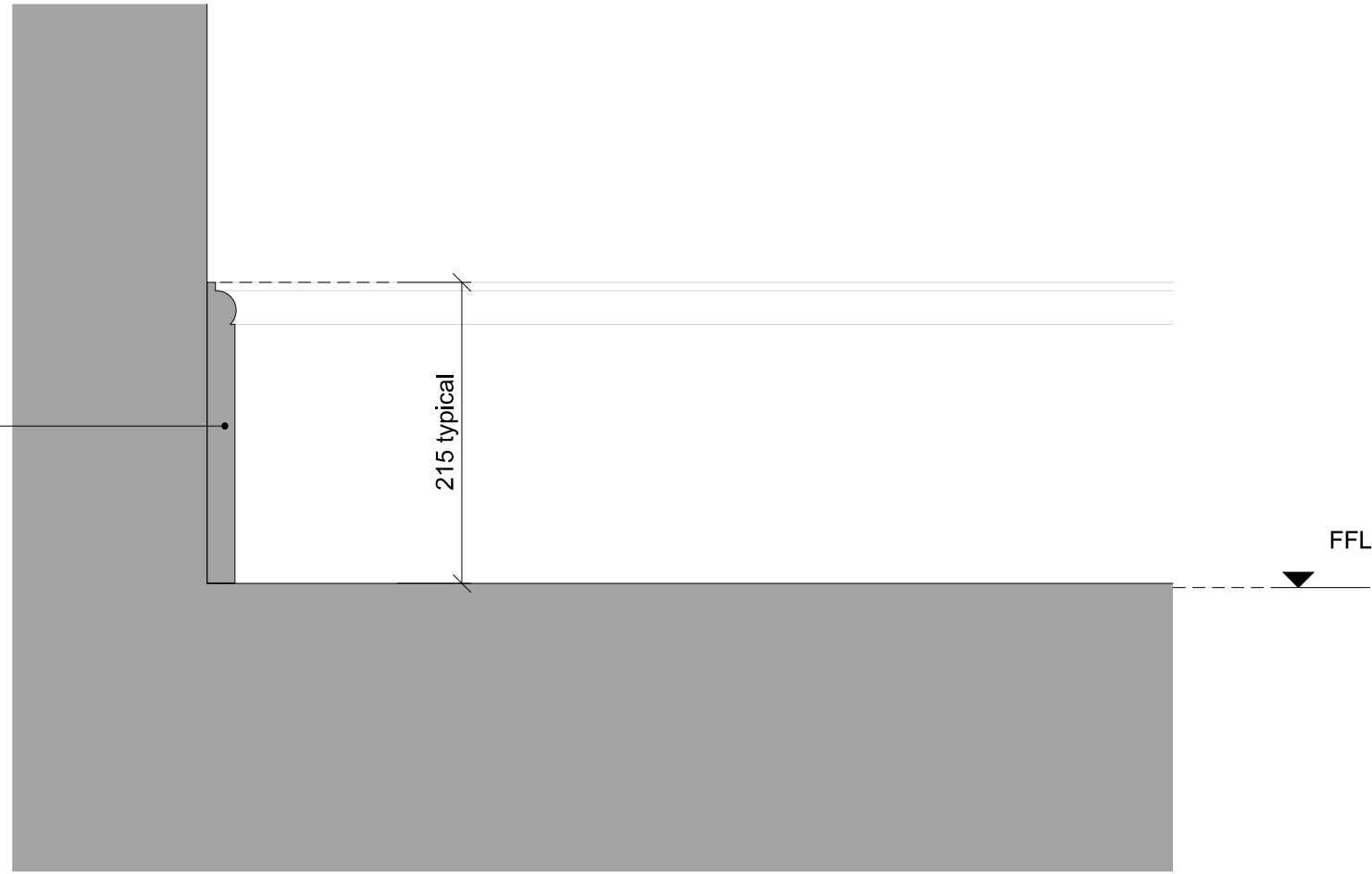
PL-C  
018-14 No. 26 Denmark Street  
Proposed typical internal ceiling cornice detail section 1:5

Existing lath and plaster refurbished  
where possible, new lime plaster on  
new laths to match where required



PL-B  
018-13 No. 26 Denmark Street  
Proposed typical internal room section 1:10

New profiled timber skirtings  
throughout



PL-D  
018-14 No. 26 Denmark Street  
Proposed typical skirting detail section 1:5

Existing timber floorboards  
carefully lifted and relaid  
following upgrade works.  
New floorboards to match  
where required

New high density joist strips

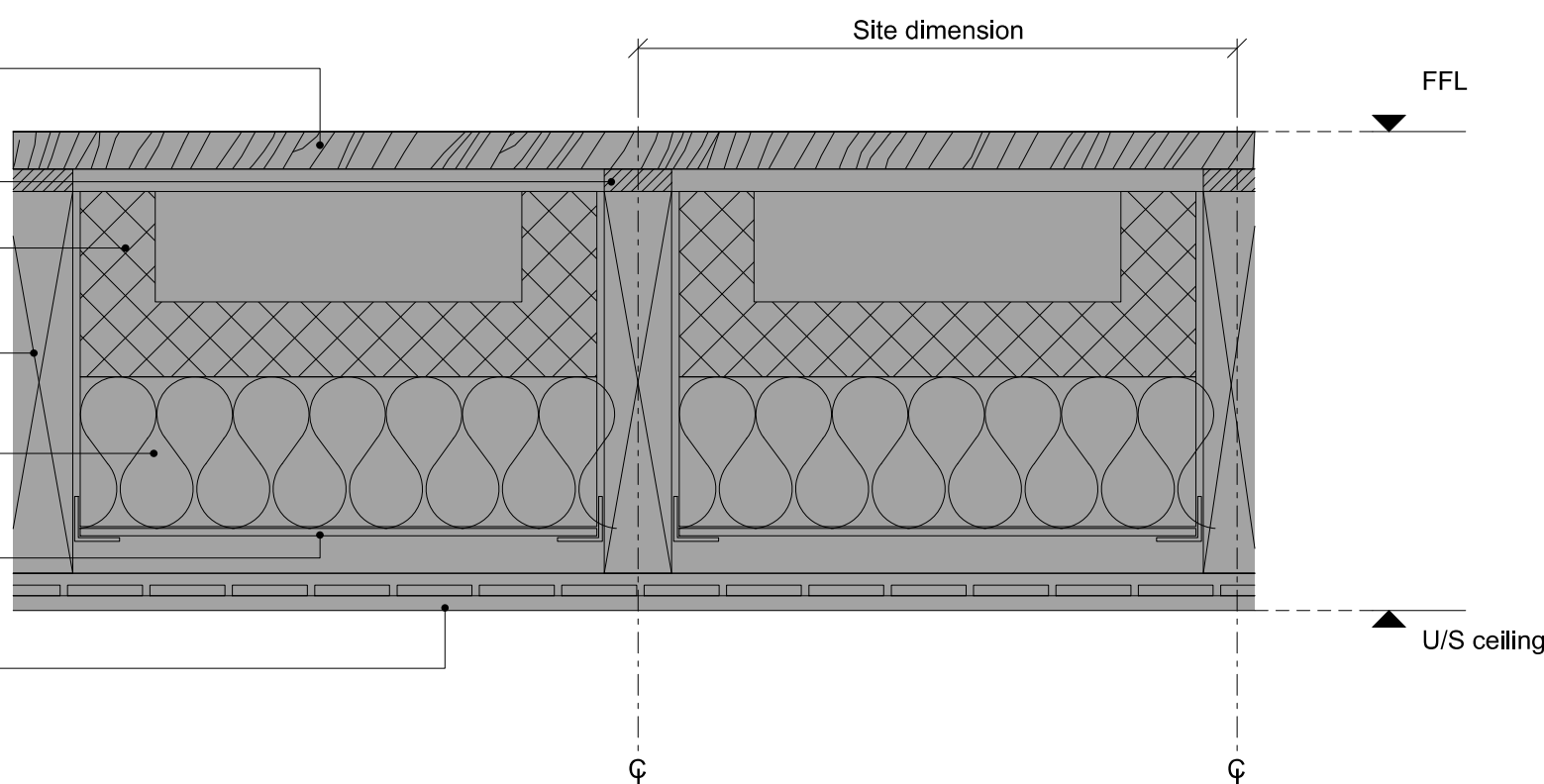
New acoustic insulation -  
Corofill LFS or similar

Existing timber joists, strengthened  
as recommended by Structural  
Engineer

New fire-rated insulation -  
Corofill CF or similar

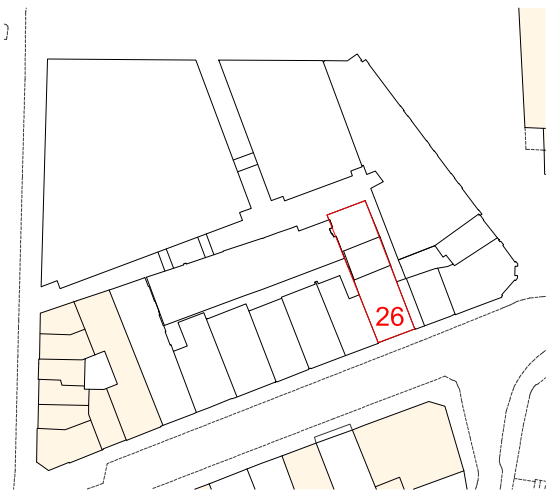
New galvanised steel carrier  
brackets and supports

Existing lath and plaster left in  
situ. Surface damage to be  
repaired where possible, new  
lime plaster on new laths to  
match where required



PL-E  
018-14 No. 26 Denmark Street  
Proposed typical fire compartmentation detail between floors 1:5

Notes: All internal furniture layouts are indicative only.



P6	04.12.15	Changes as clouded Issued for Planning
P5	11.11.15	Changes as clouded Draft MMA Pack
P4	25.09.15	Changes as clouded Draft MMA Pack
-	14.12.12	Issued for Planning

## FOR PLANNING

Revision:

ORMS

Architecture  
Design

1 Pine Street London EC1R 0JH  
T 0207 833 8533 F 0207 837 7575  
E orms@orms.co.uk

Project ST GILES CIRCUS

Drawing title No. 26 Denmark Street  
Typical internal finish details

Scale 1:5/1:10 @ A1 Drwg. No.

Date August '12 1793PL018-14 Rev. P6

Status ☒ For information ☐ For tender ☐ For construction

Do not scale. All dimensions to be confirmed on site.  
Information contained in this drawing is the sole copyright of ORMS Designers & Architects Ltd.  
and is not to be reproduced without permission.