

Information contained within this drawing is the sole copyright of HDDA Ltd, and is not to be reproduced without express permission. No implied licence exists. This drawing not to be used for land transfer or valuation purposes. Do not scale from this drawing. All dimensions & levels are to be checked on site by the contractor. Issued for purposes indicated only. Drawing errors and omissions to be reported to the architect.

Notes

1. Drawing shows design intent only by HD.
2. Detailed canopy design by specialist.
3. Structural integration and interactions to be designed and coordinated by the specialist, structural engineer and coordinated with shopfront specialist.
4. All dims are approximate and need to be checked and confirmed on site.
5. Light fittings, type, location and specification to be designed by lighting specialist.
6. Text content, type, logo, colour and any additional requirements to be designed and coordinated by branding specialist.



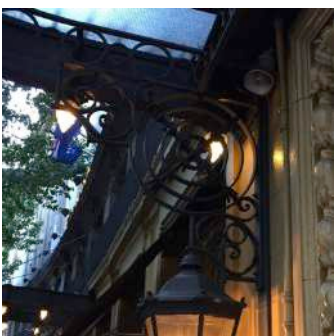
A Detail A  
Fluted architrave moulding - first floor chapel window



B Detail B  
Flower motif - first floor chapel window cornice



C Detail C  
Proposed wall lantern with integrated mini spot lights



D Detail D  
Proposed decorative side canopy support

P1	01/12/15	Issued for planning
C1	16/10/15	Issued for Construction (canopy extended to 1.2m, text above canopy removed)
I1	29/09/15	Issued for Information

Revisions

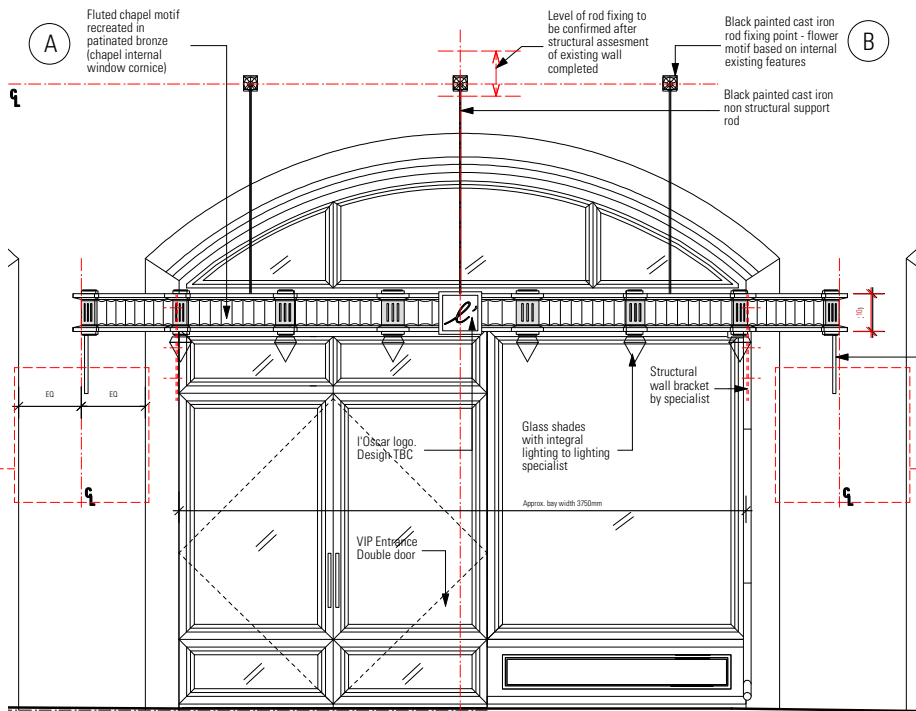
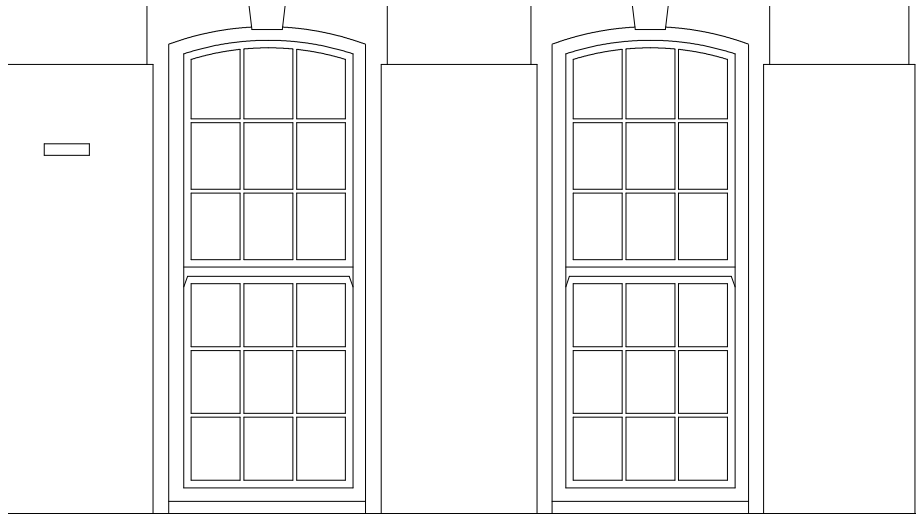
PLANNING

**HARPER  
DOWNIE**  
CREATIVE  
ARCHITECTURE

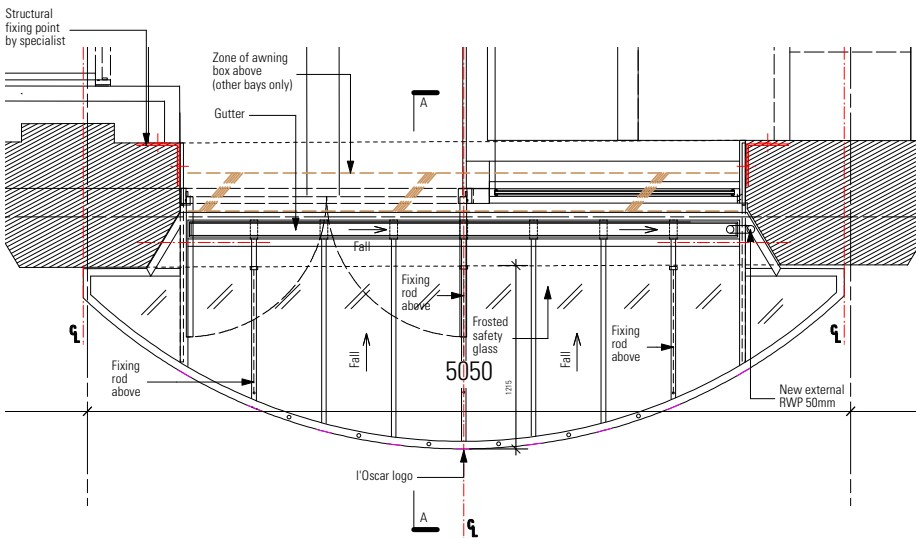
Gate House  
1 St John's Square  
London EC1M 4DH  
T +44 20 7490 7674  
studio@harperdownie.com  
www.harperdownie.com

Client	Havza Ltd		
Project	2-6 Southampton Row		
Drawing Title	Design Intent for Entrance Canopy VIP Entrance Catton Street		
Status	Planning	Drawn IG	Checked MM
Scale	A1 - 1:25, A3 - 1:50	Date	Sept 2015
Drwg. No.	586EW102	Revision	P1

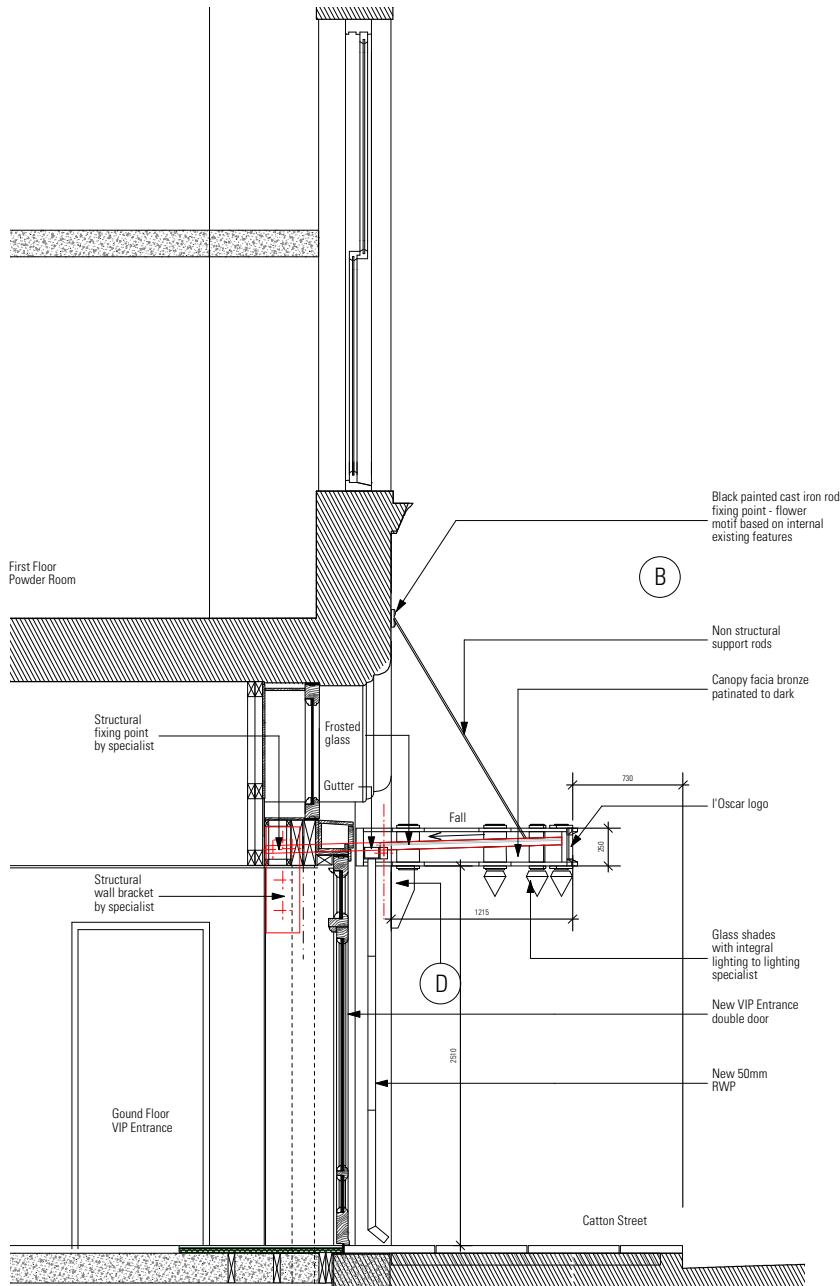
VIP Entrance  
Catton Street



1 Elevation  
1:25@A1, 1:50@A3



3 Plan View Ground Floor  
1:25@A1, 1:50@A3



2 Section A-A  
1:25@A1, 1:50@A3



Photo 01  
Existing Entrance