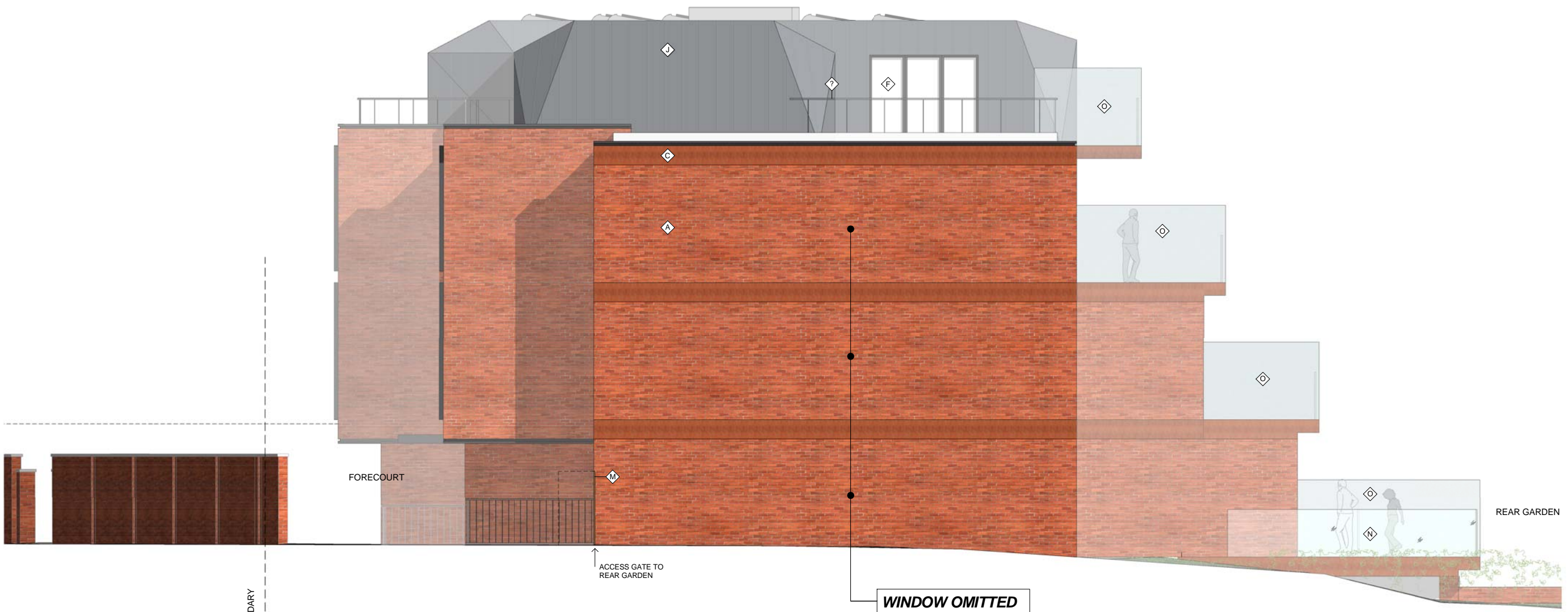


General notes:
 This drawing is copyright of KSR architects. This drawing must be read in conjunction with the Designer's Risk Assessment, specification and all other relevant documentation and drawings. KSR architects accept no liability for any expense, loss or damage of whatsoever nature and however arising from any variation made to this drawing or in the execution of the work to which it relates which has not been referred to them and their approval obtained.
 Do not scale from this drawing or the digital data, only figured dimensions are to be used. For Planning refer to linear scale. Check all dimensions on site prior to carrying out any works - advise any discrepancy

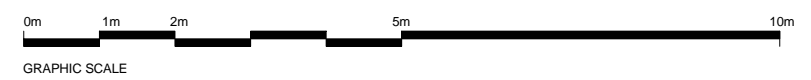
Notes/Legends

KEYNOTE (MATERIAL REFERENCE)

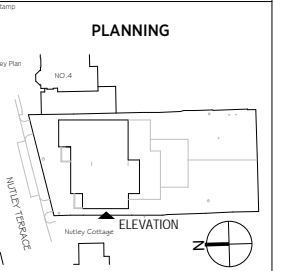
- A FAIR FACE BRICKWORK1
- B FAIR FACE BRICKWORK2
- C CAST STONE DETAILS
- D BRICK WALLING
- E INSULATED METAL SPANDRELS
- F DOUBLE GLAZED WINDOW SYSTEM
- G DOUBLE GLAZED DOOR SYSTEM
- H CAR LIFT DOOR
- J METAL ROOFING
- K METAL COPING AND EDGE DETAILS
- L POWDER COATED METAL RAILING
- M TIMBER GATE/FENCE
- N GLASS BALUSTRADES
- O TRANSLUCENT GLASS PRIVACY SCREEN



PROPOSED SIDE (WEST) ELEVATION



A Revised Planning Submission		18/04/25	KA	RS
Rev	Notes	08/04/25	By	CRH



KSRARCHITECTS
 KSR Architects LLP
 14 Grosvenor Street
 London W1R 0ND
 info@ksrarchitects.com
 t +44 (0)20 7492 5000
 www.ksrarchitects.com

Project:
6 NUTLEY TERRACE, NW3 5BX

Title:
PROPOSED SIDE (WEST) ELEVATION

Date:	APRIL 2025	Drawn By:	KA	Checked:	RS
Scale:	1:50 @ A1 / 1:100 @ A3				

Project Ref:	Drawing No:	Revision:
NUT2	NUT2 - 303	A

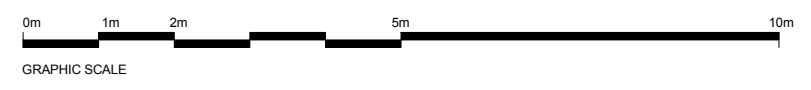


Nutley Cottage

No 6

No 4

PROPOSED REAR (SOUTH) ELEVATION

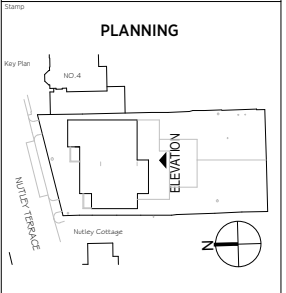


General notes:
 This drawing is copyright of KSR architects. This drawing must be read in conjunction with the Designer's Risk Assessment, specification and all other relevant documentation and drawings. KSR architects accept no liability for any expense, loss or damage of whatsoever nature and however arising from any variation made to this drawing or in the execution of the work to which it relates which has not been referred to them and their approval obtained.
 Do not scale from this drawing or the digital data, only figured dimensions are to be used. For Planning refer to linear scale. Check all dimensions on site prior to carrying out any works - advise any discrepancy

Notes/Legends

- KEYNOTE (MATERIAL REFERENCE)**
- A FAIR FACE BRICKWORK1
 - B FAIR FACE BRICKWORK2
 - C CAST STONE DETAILS
 - D BRICK WALLING
 - E INSULATED METAL SPANDRLS
 - F DOUBLE GLAZED WINDOW SYSTEM
 - G DOUBLE GLAZED DOOR SYSTEM
 - H CAR LIFT DOOR
 - J METAL ROOFING
 - K METAL COPING AND EDGE DETAILS
 - L POWDER COATED METAL RAILING
 - M TIMBER GATE/FENCE
 - N GLASS BALUSTRADES
 - O TRANSLUCENT GLASS PRIVACY SCREEN

Rev	Notes	08/04/20	By	Chd
-----	-------	----------	----	-----



KSRARCHITECTS
 KSR Architects LLP
 14 Goswell Street
 London EC1M 6DD
 info@ksrarchitects.com
 t +44 (0)20 7482 5000
 www.ksrarchitects.com

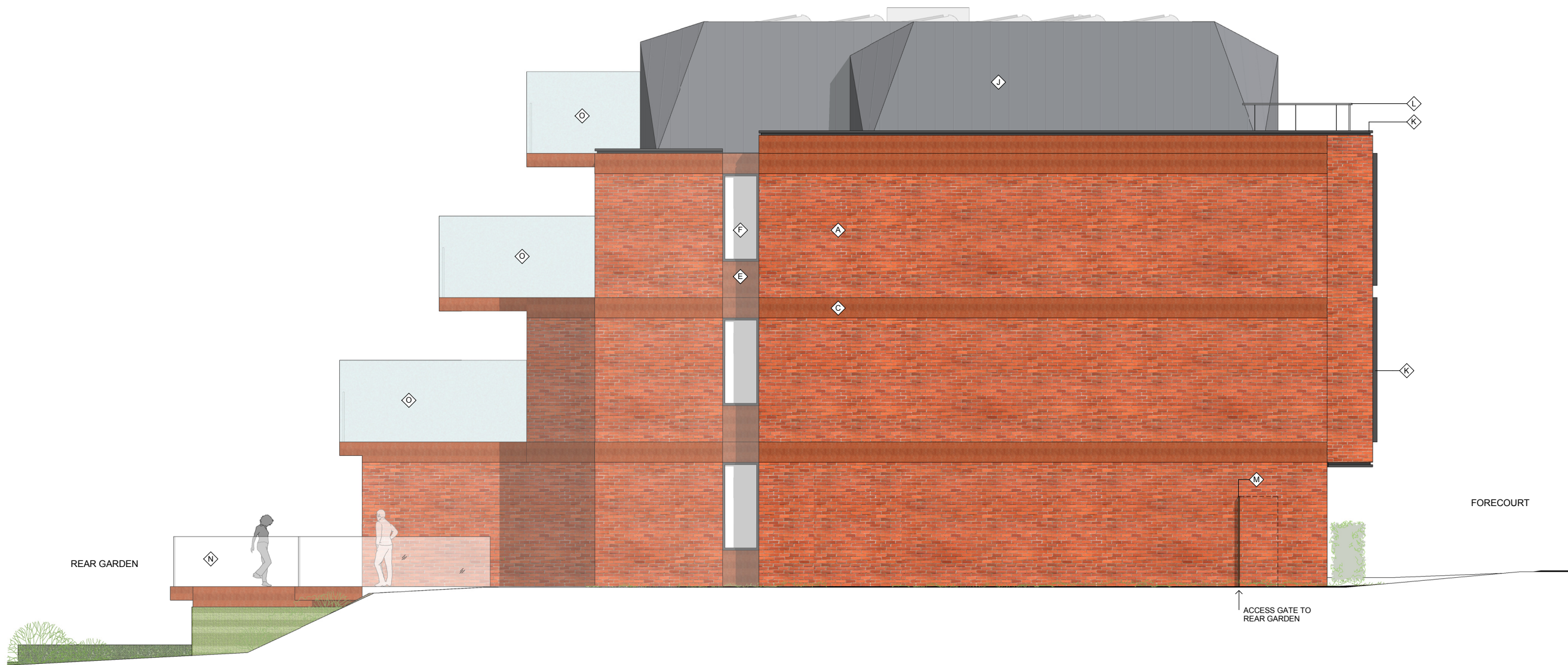
Project:
6 NUTLEY TERRACE, NW3 5BX

Title:
PROPOSED REAR (SOUTH) ELEVATION

Date:	APRIL 2020	Drawn By:	KA	Checked:	RS
-------	------------	-----------	----	----------	----

Scale:	1:50 @ A1 / 1:100 @ A3
--------	------------------------

Project Ref:	NUT2	Drawing No:	NUT2 - 304	Revision:	
--------------	------	-------------	------------	-----------	--



REAR GARDEN

FORECOURT

ACCESS GATE TO REAR GARDEN

PROPOSED SIDE (EAST) ELEVATION



General notes:
 This drawing is copyright of KSR architects. This drawing must be read in conjunction with the Designer's Risk Assessment, specification and all other relevant documentation and drawings. KSR architects accept no liability for any expense, loss or damage of whatsoever nature and however arising from any variation made to this drawing or in the execution of the work to which it relates which has not been referred to them and their approval obtained.
 Do not scale from this drawing or the digital data, only figured dimensions are to be used. For Planning refer to linear scale. Check all dimensions on site prior to carrying out any works - advice any discrepancy

Notes/Legends

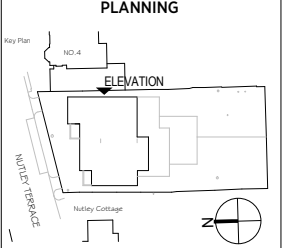
KEYNOTE (MATERIAL REFERENCE)

- A FAIR FACE BRICKWORK1
- B FAIR FACE BRICKWORK2
- C CAST STONE DETAILS
- D BRICK WALLING
- E INSULATED METAL SPANDRALS
- F DOUBLE GLAZED WINDOW SYSTEM
- G DOUBLE GLAZED DOOR SYSTEM
- H CAR LIFT DOOR
- J METAL ROOFING
- K METAL COPING AND EDGE DETAILS
- L POWDER COATED METAL RAILING
- M TIMBER GATE/FENCE
- N GLASS BALUSTRADES
- O TRANSLUCENT GLASS PRIVACY SCREEN

Rev. Notes: 06/04/2018 JY/RS/CLD

© KSR architects

Stamp



KSRARCHITECTS
 KSR Architects LLP
 14 Grosvenor Street
 London W1R 0ND
 info@ksrarchitects.com
 t +44 (0)20 7492 5000
 www.ksrarchitects.com

Project: 6 NUTLEY TERRACE, NW3 5BX

Title: PROPOSED SIDE (EAST) ELEVATION

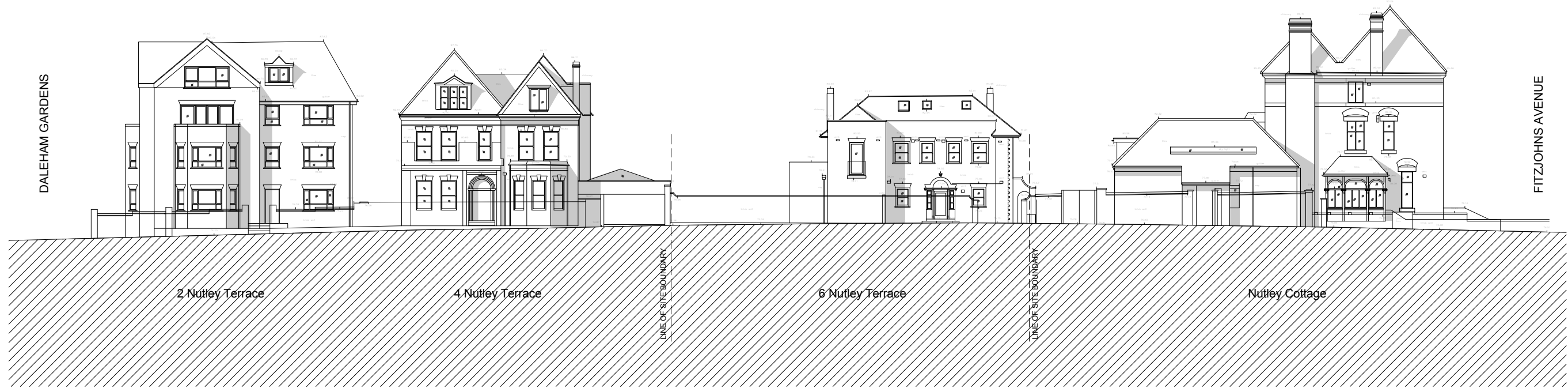
Date: APRIL 2018 Drawn By: KA Checked: RS

Scale: 1:50 @ A1 / 1:100 @ A3

Project Ref: NUT2 Drawing No: NUT2 - 305 Revision:

DALEHAM GARDENS

FITZJOHNS AVENUE



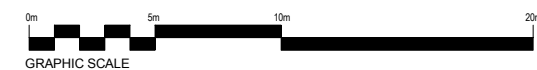
EXISTING STREET (NORTH) ELEVATION

DALEHAM GARDENS

FITZJOHNS AVENUE



PROPOSED STREET (NORTH) ELEVATION



General notes:
 This drawing is copyright of KSR architects. This drawing must be read in conjunction with the Designer's Risk Assessment, specification and all other relevant documentation and drawings. KSR architects accept no liability for any expense, loss or damage of whatsoever nature and however arising from any variation made to this drawing or in the execution of the work to which it relates which has not been referred to them and their approval obtained.
 Do not scale from this drawing or the digital data, only figured dimensions are to be used. For Planning refer to linear scale. Check all dimensions on site prior to carrying out any works - advise any discrepancy

Notes/Legends

Rev. Notes

© KSR architects

Planning

Key Plan

KSRARCHITECTS
 KSR Architects LLP
 14 Grosvenor Street
 London W1T 0ND
 info@ksrarchitects.com
 T +44 (0)20 7492 5000
 www.ksrarchitects.com

6 NUTLEY TERRACE, NW3 5BX

STREET ELEVATIONS

Date: APRIL 2016 Drawn By: SSP Checked: RS

Scale: 1:50 @ A1 / 1:100 @ A2

Project Ref: NUT2 Drawing No: NUT2 - 315