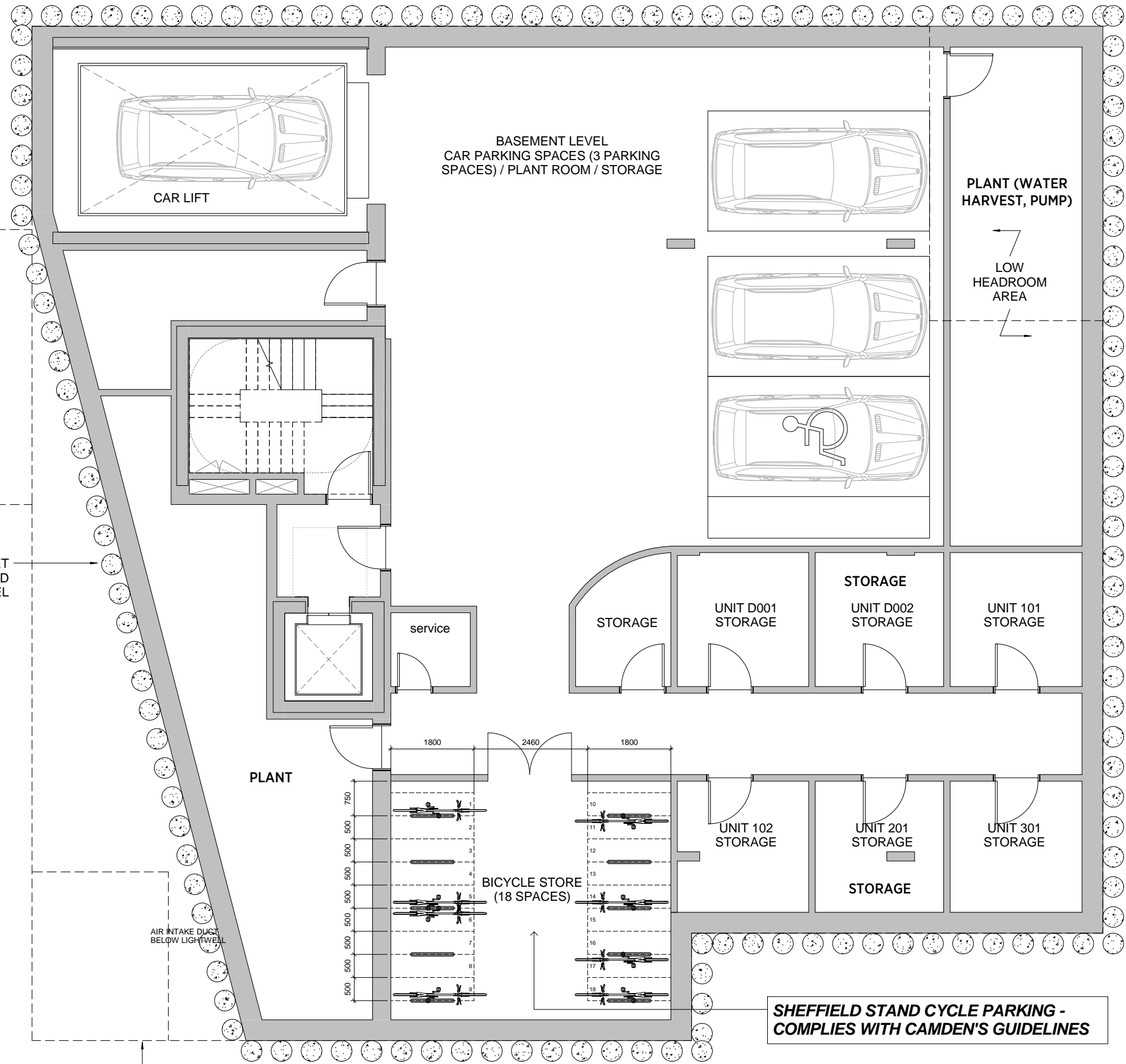


LINE OF SITE BOUNDARY



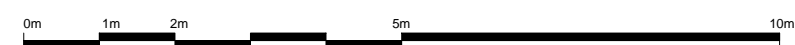
BASEMENT OFFSET FROM UNDERGROUND NATIONAL RAIL TUNNEL

AIR INTAKE DUCT BELOW LIGHTWELL

HOUSE ABOVE SHOWN IN DASHED LINE

SHEFFIELD STAND CYCLE PARKING - COMPLIES WITH CAMDEN'S GUIDELINES

PROPOSED BASEMENT PLAN



GRAPHIC SCALE

General notes:
 This drawing is copyright of KSR architects. This drawing must be read in conjunction with the Designer's Risk Assessment, specification and all other relevant documentation and drawings. KSR architects accept no liability for any expense, loss or damage of whatsoever nature and however arising from any variation made to this drawing or in the execution of the work to which it relates which has not been referred to them and their approval obtained.
 Do not scale from this drawing or the digital data, only figured dimensions are to be used. For Planning refer to linear scale. Check all dimensions on site prior to carrying out any works - advise any discrepancy.

Notes/Legends

Rev	Notes	08/04/20	By	KA	Chkd
-----	-------	----------	----	----	------

© KSR architects

Stamp

PLANNING

Key Plan



KSRARCHITECTS
 KSR Architects LLP
 14 Goswell Street
 London EC1M 6DD
 info@ksrarchitects.com
 t +44 (0)20 7882 5000
 www.ksrarchitects.com

Project: 6 NUTLEY TERRACE, NW3 5BX

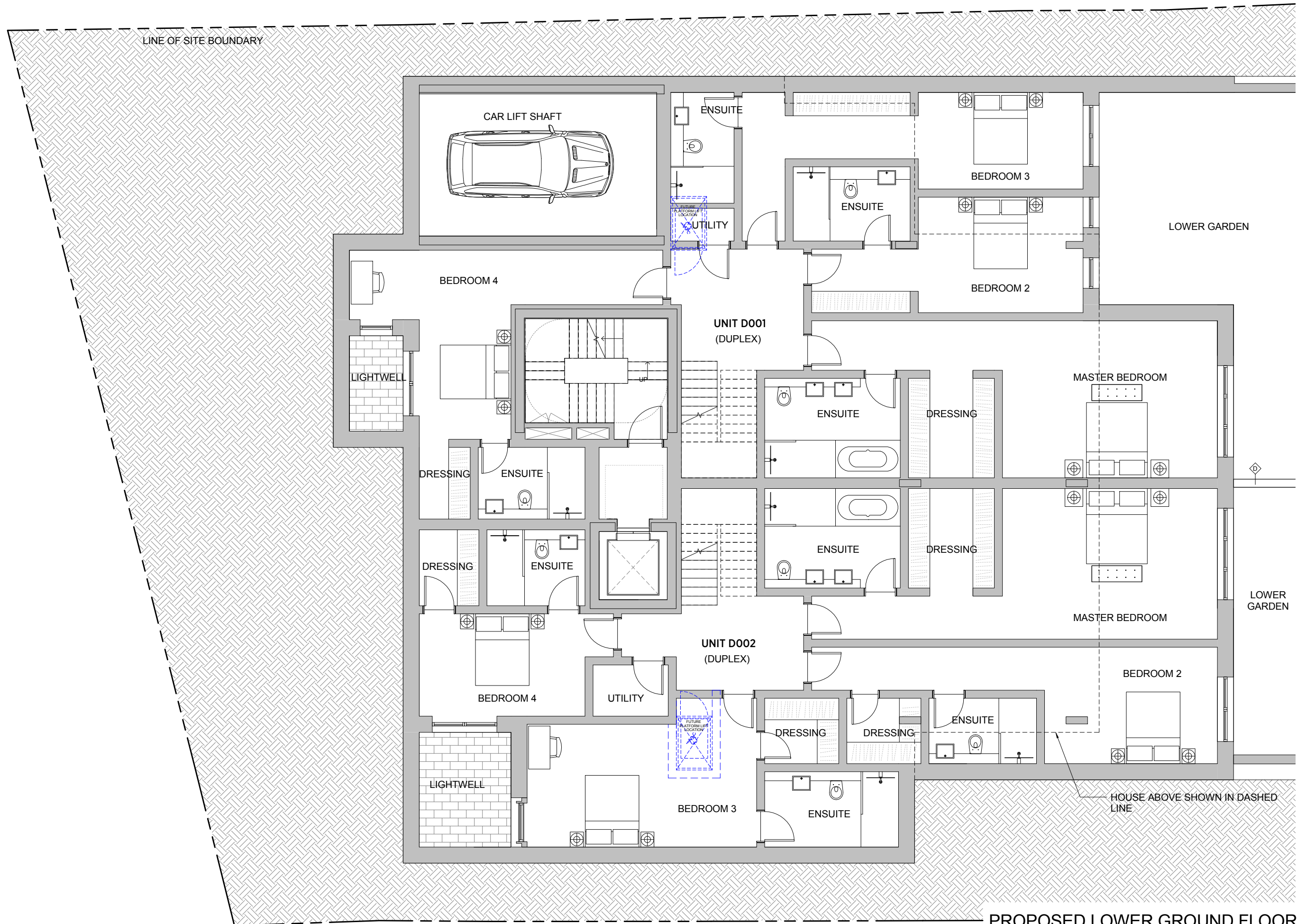
Title: PROPOSED BASEMENT PLAN

Date:	APRIL 2020	Drawn By:	KA	Checked:	RS
-------	------------	-----------	----	----------	----

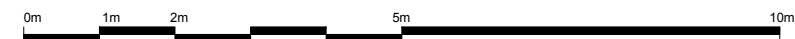
Scale: 1:50 @ A1 / 1:100 @ A3

Project Ref:	NUT2	Drawing No:	NUT2 - 101	Revision:	A
--------------	------	-------------	------------	-----------	---

LINE OF SITE BOUNDARY



PROPOSED LOWER GROUND FLOOR



GRAPHIC SCALE

General notes:
 This drawing is copyright of KSR architects. This drawing must be read in conjunction with the Designer's Risk Assessment, specification and all other relevant documentation and drawings. KSR architects accept no liability for any expense, loss or damage of whatsoever nature and however arising from any variation made to this drawing or in the execution of the work to which it relates which has not been referred to them and their approval obtained.
 Do not scale from this drawing or the digital data, only figured dimensions are to be used. For Planning refer to linear scale. Check all dimensions on site prior to carrying out any works - advise any discrepancy.

Notes/Legends

No.	Notes	DATE	BY	CHKD
1	ISSUED FOR PLANNING			

PLANNING

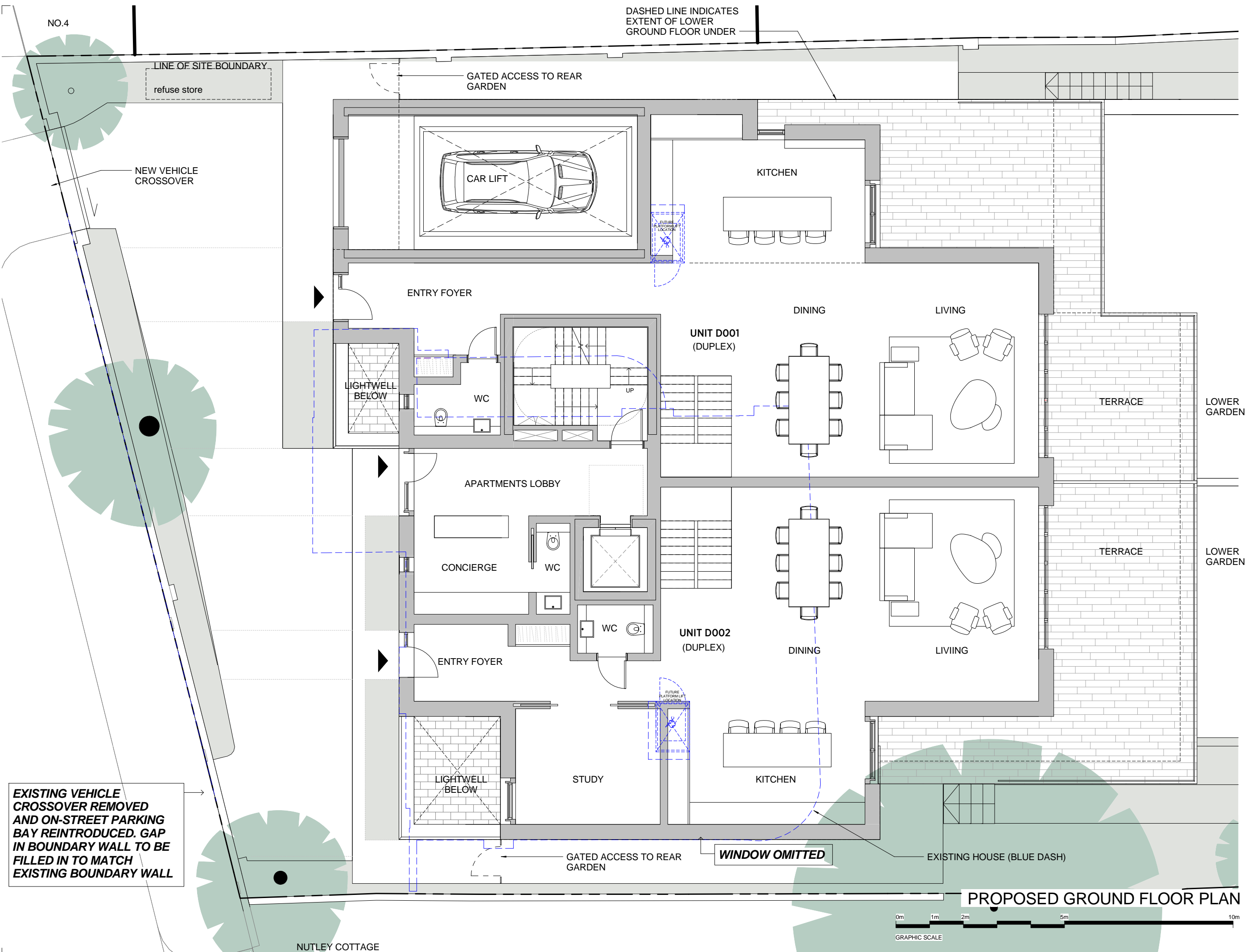


KSRARCHITECTS
 KSR Architects LLP
 14 Goswell Street
 London EC1A 7DU
 T +44 (0)20 7482 5000
 www.ksararchitects.com

6 NUTLEY TERRACE, NW3 5BX

PROPOSED LOWER GROUND FLOOR PLAN

Date:	APRIL 2015	Drawn By:	KA	Checked:	RS
Scale:	1:50 @ A1 / 1:100 @ A3				
Project Ref:	NUT2	Drawing No:	NUT2 - 102	Revision:	



EXISTING VEHICLE CROSSOVER REMOVED AND ON-STREET PARKING BAY REINTRODUCED. GAP IN BOUNDARY WALL TO BE FILLED IN TO MATCH EXISTING BOUNDARY WALL

General notes:
 This drawing is copyright of KSR architects. This drawing must be read in conjunction with the Designer's Risk Assessment, specification and all other relevant documentation and drawings. KSR architects accept no liability for any expense, loss or damage of whatsoever nature and however arising from any variation made to this drawing or in the execution of the work to which it relates which has not been referred to them and their approval obtained.
 Do not scale from this drawing or the digital data, only figured dimensions are to be used. For Planning refer to linear scale. Check all dimensions on site prior to carrying out any works - advise any discrepancy.

Notes/Legends

A - Revised Planning Submission		18/04/25	KA	RS
Rev	Notes	08/04/25	By	Chd

© KSR architects
PLANNING



KSRARCHITECTS
 KSR Architects LLP
 14 Grosvenor Street
 London W1R 0ND
 T +44 (0)20 7882 0000
 email@ksrarchitects.com
 www.ksrarchitects.com

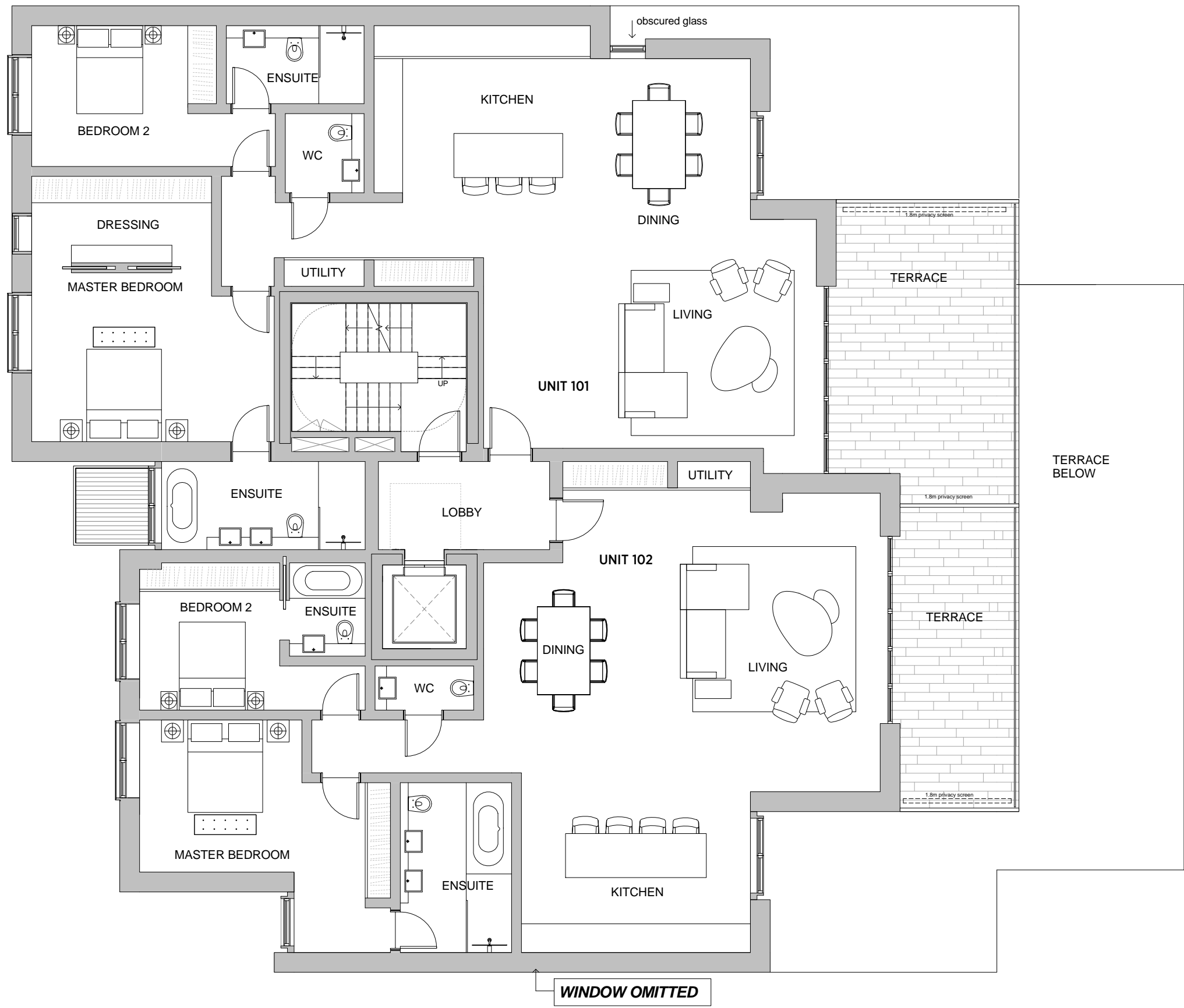
Project:
6 NUTLEY TERRACE, NW3 5BX

Title:
PROPOSED GROUND FLOOR PLAN

Date:	APRIL 2025	Drawn By:	KA	Checked:	RS
Scale:	1:50 @ A1 / 1:100 @ A3				

Project Ref:	Drawing No:	Revision:
NUT2	NUT2 - 103	A

PROPOSED GROUND FLOOR PLAN



General notes:
 This drawing is copyright of KSR architects. This drawing must be read in conjunction with the Designer's Risk Assessment, specification and all other relevant documentation and drawings. KSR architects accept no liability for any expense, loss or damage of whatsoever nature and however arising from any variation made to this drawing or in the execution of the work to which it relates which has not been referred to them and their approval obtained.
 Do not scale from this drawing or the digital data, only figured dimensions are to be used. For Planning refer to linear scale. Check all dimensions on site prior to carrying out any works - advise any discrepancy

Notes/Legends

Rev.	Notes	19/04/15	KA	RS
1		04/04/15	RS	CHD

© KSR architects

PLANNING

Key Plan

KSRARCHITECTS
 KSR Architects LLP
 14 Grosvenor Street
 London W1T 0ND
 info@ksrarchitects.com
 t +44 (0)20 7492 5000
 www.ksrarchitects.com

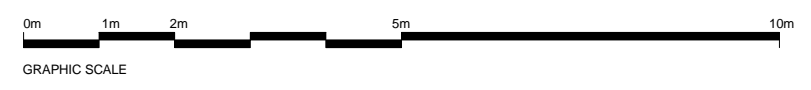
Project:
6 NUTLEY TERRACE, NW3 5BX

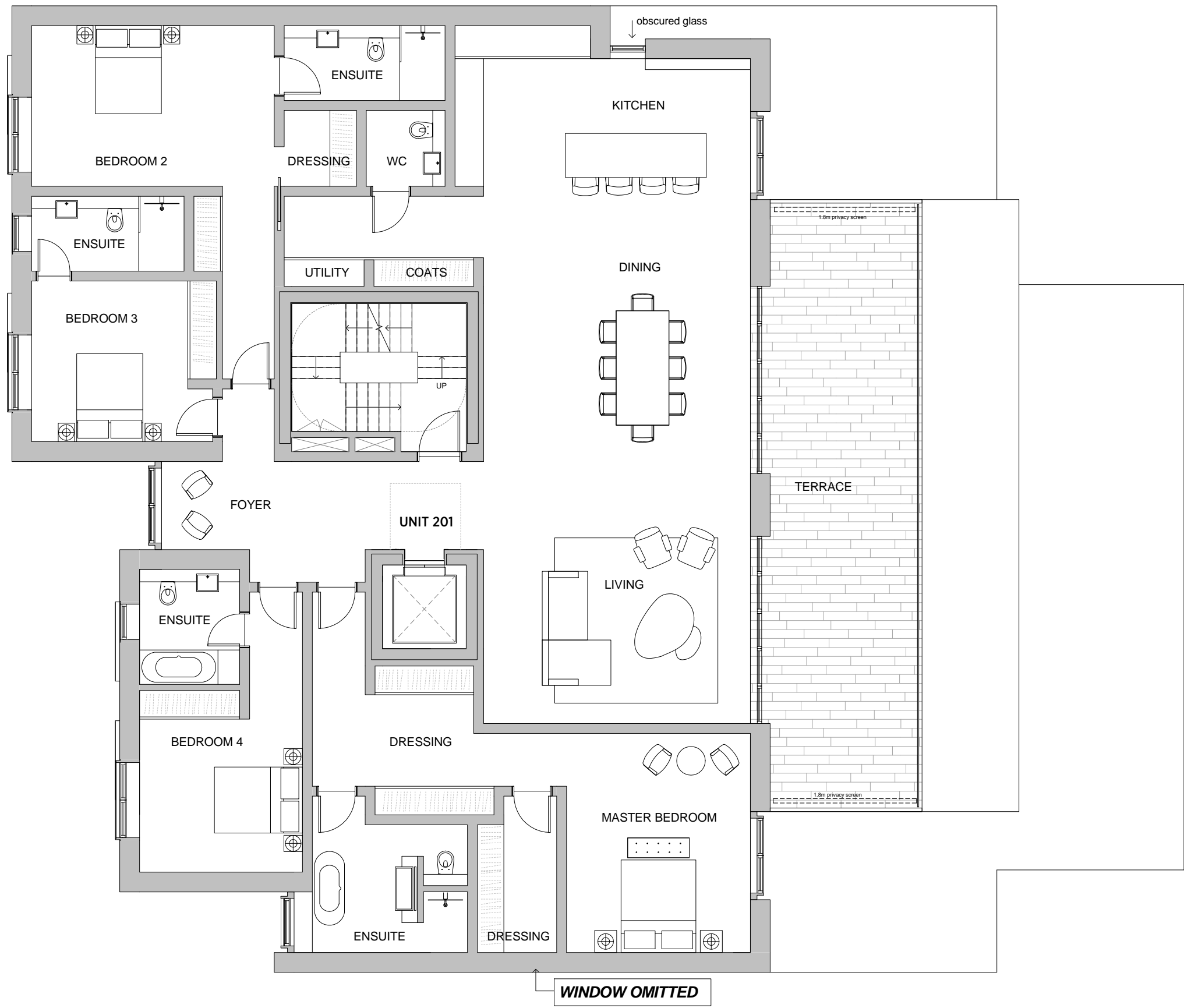
Title:
PROPOSED FIRST FLOOR PLAN

Date:	APRIL 2015	Drawn By:	KA	Checked:	RS
Scale:	1:50 @ A1 / 1:100 @ A3				

Project Ref:	Drawing No:	Revision:
NUT2	NUT2 - 104	A

PROPOSED FIRST FLOOR PLAN





General notes:
 This drawing is copyright of KSR architects. This drawing must be read in conjunction with the Designer's Risk Assessment, specification and all other relevant documentation and drawings. KSR architects accept no liability for any expense, loss or damage of whatsoever nature and however arising from any variation made to this drawing or in the execution of the work to which it relates which has not been referred to them and their approval obtained.
 Do not scale from this drawing or the digital data, only figured dimensions are to be used. For Planning refer to linear scale. Check all dimensions on site prior to carrying out any works - advise any discrepancy

Notes/Legends

A Revised Planning Submission 19/04/15 KA RS

Rev. Notes: 04/04/15 JJ By: CHD

© KSR architects

Stamp: **PLANNING**

Key Plan:



KSRARCHITECTS
 KSR Architects LLP
 14 Grosvenor Street
 London W1T 0ND
 info@ksrarchitects.com
 t +44 (0)20 7492 5000
 www.ksrarchitects.com

Project: **6 NUTLEY TERRACE, NW3 5BX**

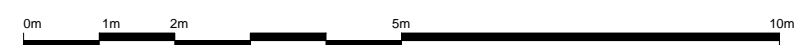
Title: **PROPOSED SECOND FLOOR PLAN**

Date: APRIL 2015 Drawn By: KA Checked: RS

Scale: 1:50 @ A1 / 1:100 @ A3

Project Ref: **NUT2** Drawing No: **NUT2 - 105** Revision: **A**

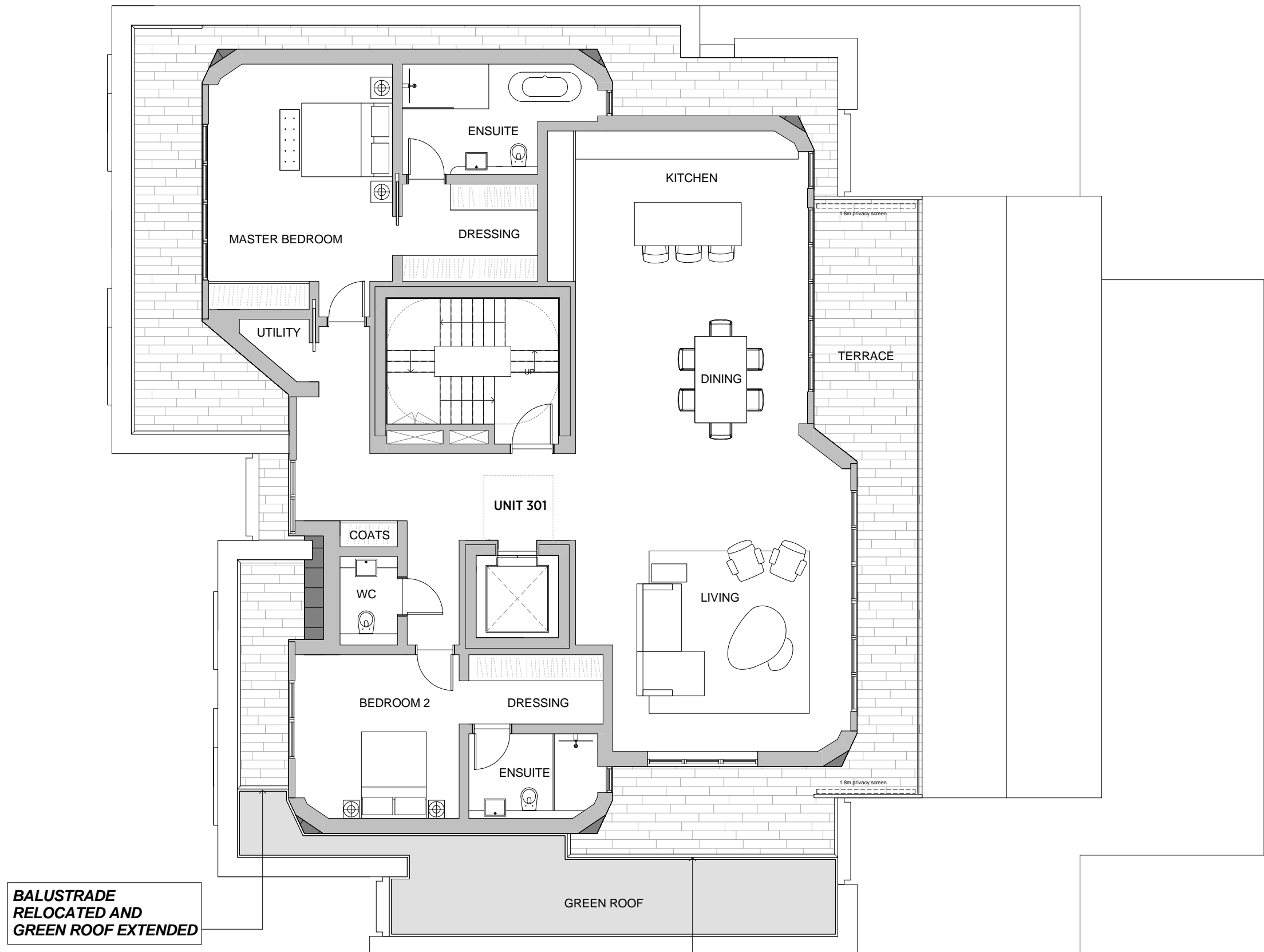
PROPOSED SECOND FLOOR PLAN



GRAPHIC SCALE

General notes:
 This drawing is copyright of KSR architects. This drawing must be read in conjunction with the Designer's Risk Assessment, specification and all other relevant documentation and drawings. KSR architects accept no liability for any expense, loss or damage of whatsoever nature and however arising from any variation made to this drawing or in the execution of the work to which it relates which has not been referred to them and their approval obtained.
 Do not scale from this drawing or the digital data, only figured dimensions are to be used. For Planning refer to linear scale. Check all dimensions on site prior to carrying out any works - advise any discrepancy

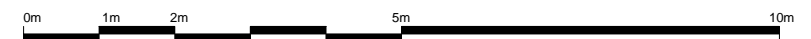
Notes/Legends



**BALUSTRADE
 RELOCATED AND
 GREEN ROOF EXTENDED**

BALUSTRADE

PROPOSED THIRD FLOOR PLAN



GRAPHIC SCALE

Rev	Notes	19/06/15	KA	RS
1		04/04/16	RS	CHD

© KSR architects
 Stamp
PLANNING



KSRARCHITECTS
 KSR Architects LLP
 14 Grosvenor Street
 London W1T 0ND
 info@ksrarchitects.com
 t +44 (0)20 7482 5000
 www.ksrarchitects.com

Project:
6 NUTLEY TERRACE, NW3 5BX

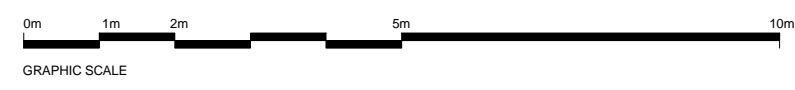
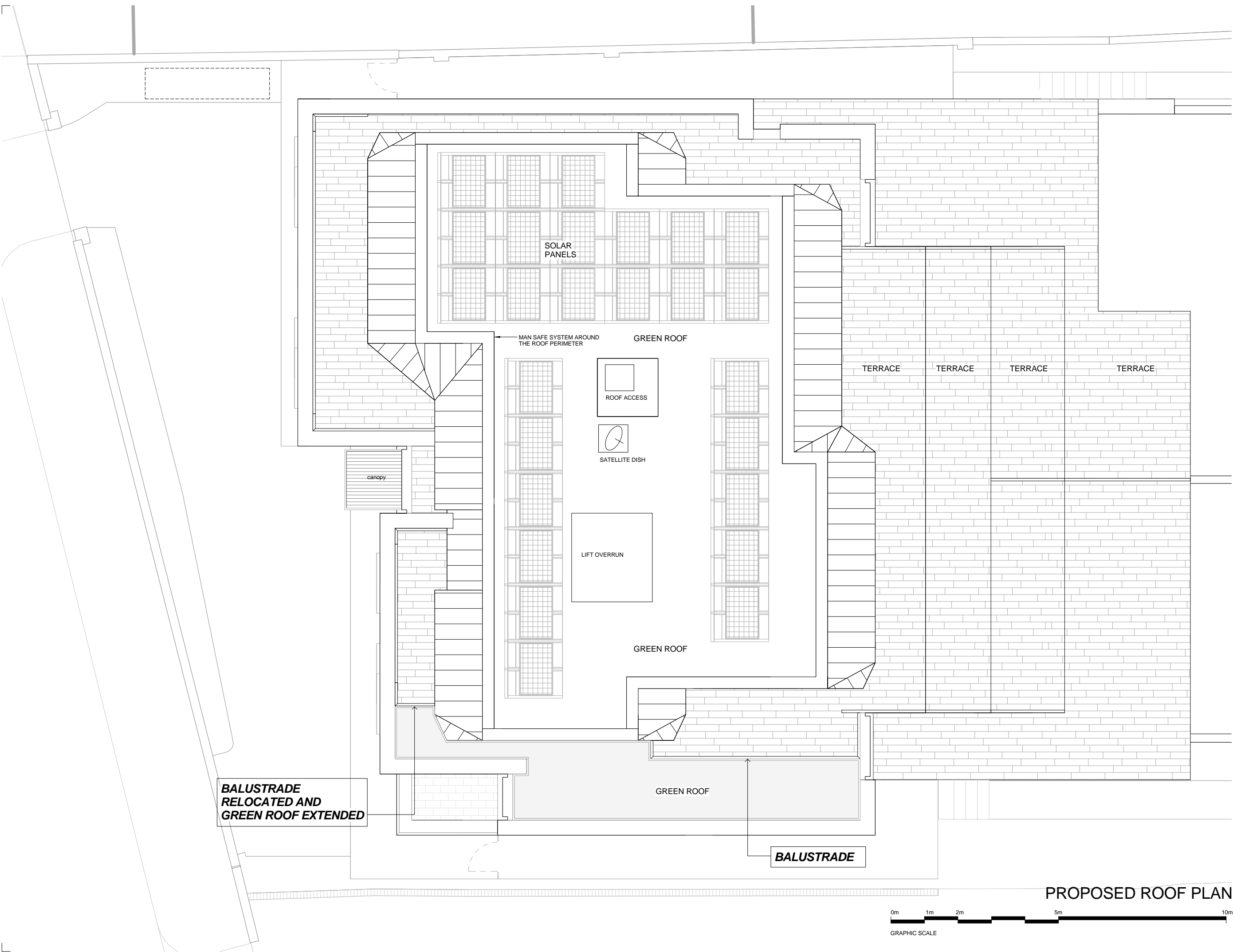
Title:
PROPOSED THIRD FLOOR PLAN

Date:	APRIL 2016	Drawn By:	KA	Checked:	RS
Scale:	1:50 @ A1 / 1:100 @ A3				

Project Ref:	Drawing No:	Revision:
NUT2	NUT2 - 106	A

General notes:
 This drawing is copyright of KSR architects. This drawing must be read in conjunction with the Designer's Risk Assessment, specification and all other relevant documentation and drawings. KSR architects accept no liability for any expense, loss or damage of whatsoever nature and however arising from any variation made to this drawing or in the execution of the work to which it relates which has not been referred to them and their approval obtained.
 Do not scale from this drawing or the digital data, only figured dimensions are to be used. For Planning refer to linear scale. Check all dimensions on site prior to carrying out any works - advise any discrepancy

Notes/Legends



PROPOSED ROOF PLAN

A Revised Planning Submission		19/04/15	KA	RS
Rev.	Notes	08/04/15	By	Check

© KSR architects
 Stamp

PLANNING



KSRARCHITECTS
 KSR Architects LLP
 14 Grosvenor Street
 London W1R 0ND
 info@ksrarchitects.com
 t +44 (0)20 7492 5000
 www.ksrarchitects.com

Project:
6 NUTLEY TERRACE, NW3 5BX

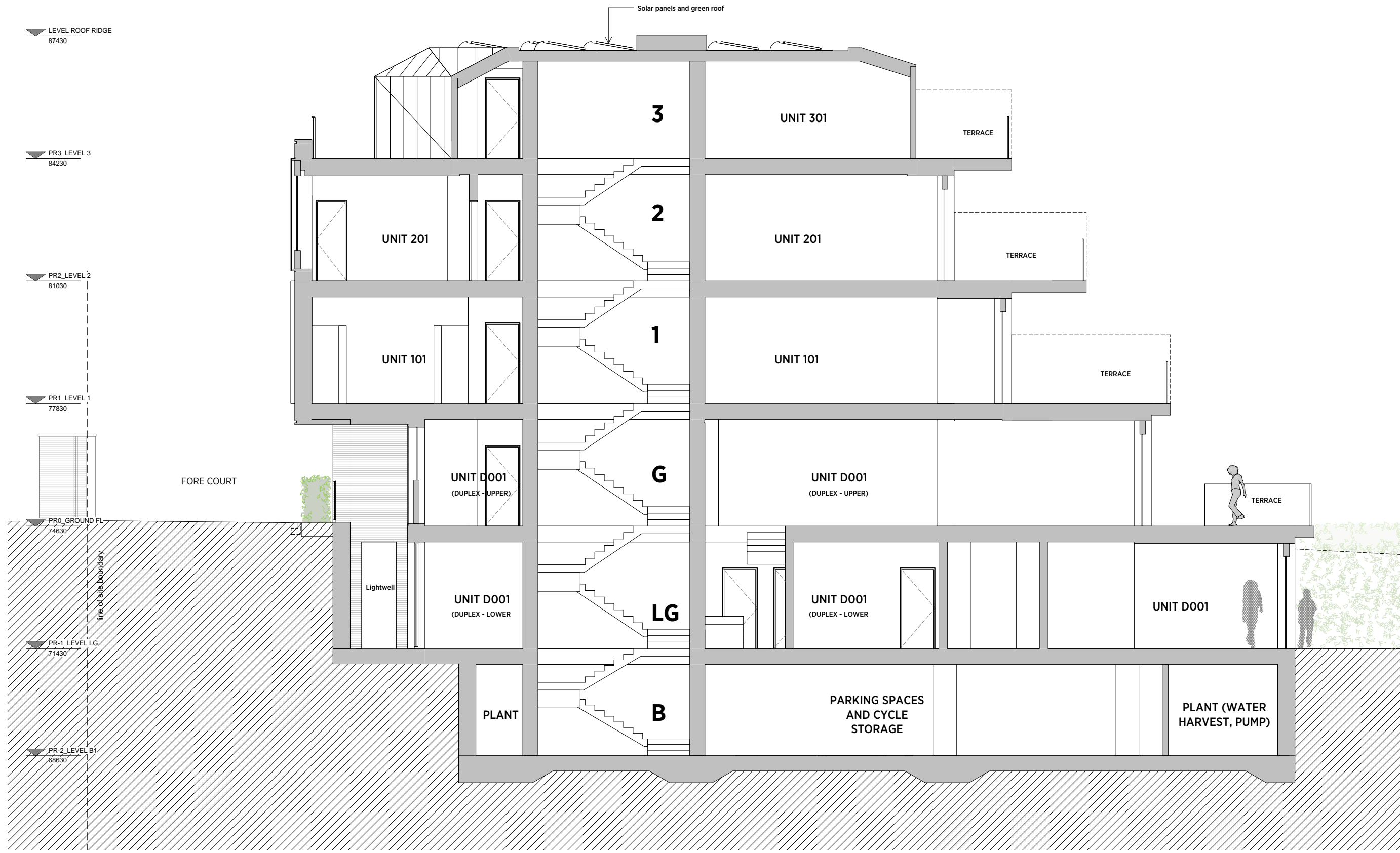
Title:
PROPOSED ROOF PLAN

Date:	APRIL 2015	Drawn By:	KA	Checked:	RS
Scale:	1:50 @ A1 / 1:100 @ A3				

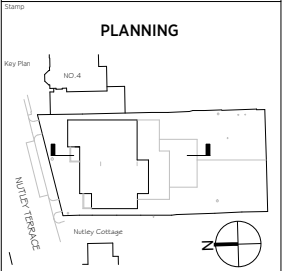
Project Ref:	Drawing No:	Revision:
NUT2	NUT2 - 107	A

General notes:
 This drawing is copyright of KSR architects. This drawing must be read in conjunction with the Designer's Risk Assessment, specification and all other relevant documentation and drawings. KSR architects accept no liability for any expense, loss or damage of whatsoever nature and however arising from any variation made to this drawing or in the execution of the work to which it relates which has not been referred to them and their approval obtained.
 Do not scale from this drawing or the digital data, only figured dimensions are to be used. For Planning refer to linear scale. Check all dimensions on site prior to carrying out any works - advise any discrepancy.

Notes/Legends



Rev	Notes	By	Chk



KSRARCHITECTS
 KSR Architects LLP
 14 Goswell Street
 London EC2A 4DF
 T +44 (0)20 7882 5000
 info@ksrarchitects.com
 www.ksrarchitects.com

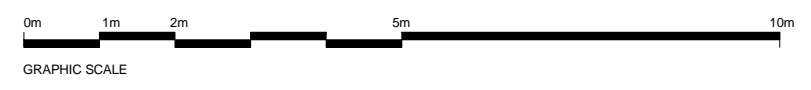
Project:
6 NUTLEY TERRACE, NW3 5BX

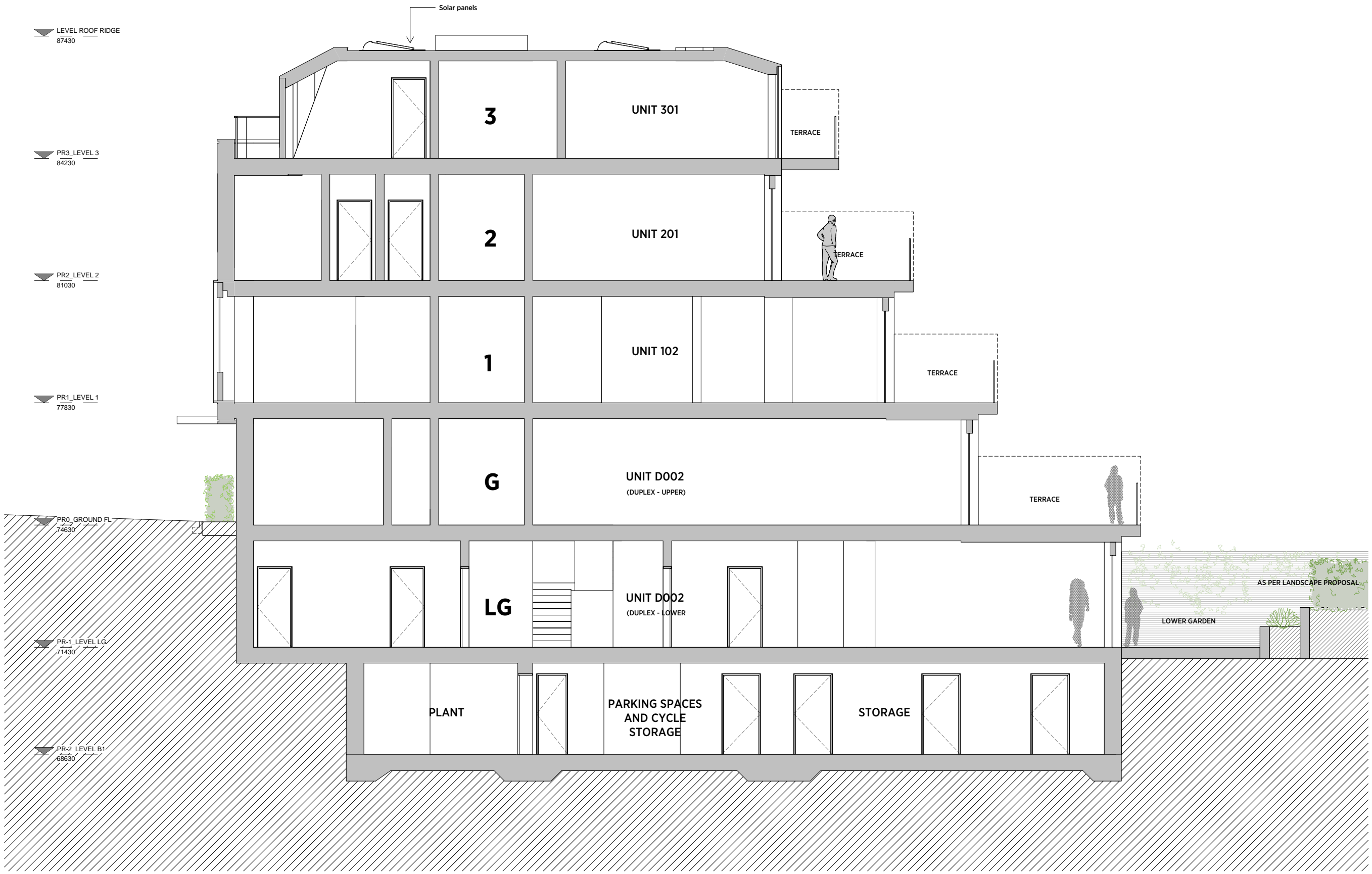
Title:
PROPOSED SECTION AA

Date:	APRIL 2015	Drawn By:	KA	Checked:	RS
Scale:	1:50 @ A1 / 1:100 @ A3				

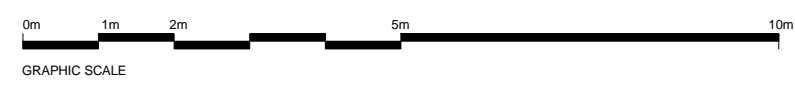
Project Ref:	Drawing No:	Revision:
NUT2	NUT2 - 201	

PROPOSED SECTION AA





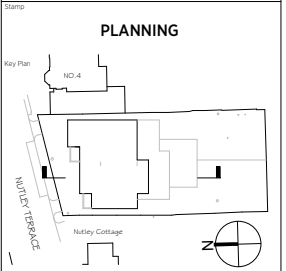
PROPOSED SECTION BB



General notes:
 This drawing is copyright of KSR architects. This drawing must be read in conjunction with the Designer's Risk Assessment, specification and all other relevant documentation and drawings. KSR architects accept no liability for any expense, loss or damage of whatsoever nature and however arising from any variation made to this drawing or in the execution of the work to which it relates which has not been referred to them and their approval obtained.
 Do not scale from this drawing or the digital data, only figured dimensions are to be used. For Planning refer to linear scale. Check all dimensions on site prior to carrying out any works - advice any discrepancy

Notes/Legends

No.	Notes	DATE	BY	CHKD



KSRARCHITECTS
 KSR Architects LLP
 14 Goswell Street
 London EC2A 4DF
 T +44 (0)20 7882 5000
 info@ksrarchitects.com
 www.ksrarchitects.com

Project
6 NUTLEY TERRACE, NW3 5BX

Title
PROPOSED SECTION BB

Date	APRIL 2018	Drawn By	KA	Checked	RS
Scale	1:50 @ A1 / 1:100 @ A3				

Project Ref	Drawing No	Revision
NUT2	NUT2 - 202	

General notes:
 This drawing is copyright of KSR architects. This drawing must be read in conjunction with the Designer's Risk Assessment, specification and all other relevant documentation and drawings. KSR architects accept no liability for any expense, loss or damage of whatsoever nature and however arising from any variation made to this drawing or in the execution of the work to which it relates which has not been referred to them and their approval obtained.
 Do not scale from this drawing or the digital data, only figured dimensions are to be used. For Planning refer to linear scale. Check all dimensions on site prior to carrying out any works - advise any discrepancy

Notes/Legends



No 2

No 4

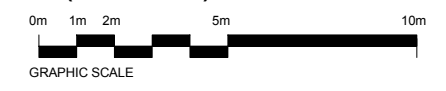
No 6

Nutley Cottage

LINE OF SITE BOUNDARY

LINE OF SITE BOUNDARY

PROPOSED STREET (NORTH) ELEVATION



Rev	Notes	04/04/2018	JK	CHD
-----	-------	------------	----	-----

© KSR architects

Stamp
PLANNING

Key Plan

KSRARCHITECTS
 KSR Architects LLP
 14 Goswell Street London EC2A 4DF
 T +44 (0)20 7492 5000
 email@ksrarchitects.com
 www.ksrarchitects.com

Project:
6 NUTLEY TERRACE, NW3 5BX

Title:
PROPOSED FRONT (NORTH) STREET ELEVATION

Date:	APRIL 2018	Drawn By:	KA	Checked:	SHY
-------	------------	-----------	----	----------	-----

Scale:	1:500 @ A1 / 1:200 @ A3
--------	-------------------------

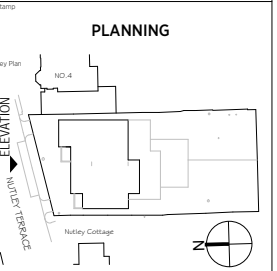
Project Ref:	NUT2	Drawing No:	NUT2 - 300	Revision:	
--------------	------	-------------	------------	-----------	--

General notes:
 This drawing is copyright of KSR architects. This drawing must be read in conjunction with the Designer's Risk Assessment, specification and all other relevant documentation and drawings. KSR architects accept no liability for any expense, loss or damage of whatsoever nature and however arising from any variation made to this drawing or in the execution of the work to which it relates which has not been referred to them and their approval obtained.
 Do not scale from this drawing or the digital data, only figured dimensions are to be used. For Planning refer to linear scale. Check all dimensions on site prior to carrying out any works - advise any discrepancy

Notes/Legends



A Revised Planning Submission 19/04/15 KA RS
 No. Notes 04/04/15 By: CAJ



KSRARCHITECTS
 KSR Architects LLP
 14 Goswell Street
 London EC1R 4DU
 info@ksrarchitects.com
 t +44 (0)20 7682 5000
 www.ksrarchitects.com

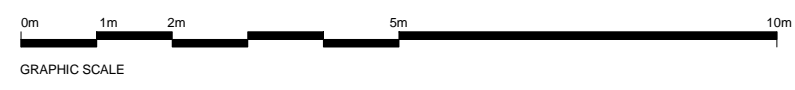
Project:
6 NUTLEY TERRACE, NW3 5BX

Title:
BOUNDARY WALL TREATMENT

Date: APRIL 2015 Drawn By: KA Checked: RS
 Scale: 1:50 @ A1 / 1:100 @ A3

Project Ref: **NUT2** Drawing No: **NUT2 - 301** Revision: **A**

BOUNDARY WALL TREATMENT



General notes:
 This drawing is copyright of KSR architects. This drawing must be read in conjunction with the Designer's Risk Assessment, specification and all other relevant documentation and drawings. KSR architects accept no liability for any expense, loss or damage of whatsoever nature and however arising from any variation made to this drawing or in the execution of the work to which it relates which has not been referred to them and their approval obtained.
 Do not scale from this drawing or the digital data, only figured dimensions are to be used. For Planning refer to linear scale. Check all dimensions on site prior to carrying out any works - advise any discrepancy

Notes/Legends

KEYNOTE (MATERIAL REFERENCE)

- A FAIR FACE BRICKWORK1
- B FAIR FACE BRICKWORK2
- C CAST STONE DETAILS
- D BRICK WALLING
- E INSULATED METAL SPANDRALS
- F DOUBLE GLAZED WINDOW SYSTEM
- G DOUBLE GLAZED DOOR SYSTEM
- H CAR LIFT DOOR
- J METAL ROOFING
- K METAL COPING AND EDGE DETAILS
- L POWDER COATED METAL RAILING
- M TIMBER GATE/FENCE
- N GLASS BALUSTRADES
- O TRANSLUCENT GLASS PRIVACY SCREEN

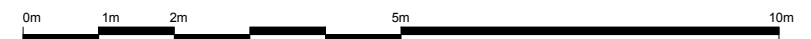


LINE OF SITE BOUNDARY

No 6

LINE OF SITE BOUNDARY

PROPOSED STREET (NORTH) ELEVATION



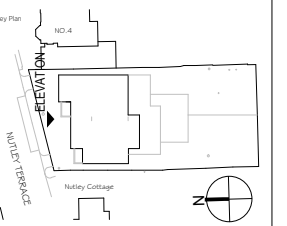
GRAPHIC SCALE

Rev	Notes	date	By	Chk

© KSR architects

Stamp

PLANNING



KSRARCHITECTS
 KSR Architects LLP
 14 Goswell Street
 London EC2A 4DF
 Tel: +44 (0)20 7882 5000
 Email: info@ksrarchitects.com
 Website: www.ksrarchitects.com

Project:
6 NUTLEY TERRACE, NW3 5BX

Title:
PROPOSED FRONT (NORTH) ELEVATION

Date:	APRIL 2018	Drawn By:	KA	Checked:	RS
Scale:	1:50 @ A1 / 1:100 @ A3				

Project Ref:	Drawing No:	Revision:
NUT2	NUT2 - 302	