

# Camden Core Strategy 2010-2025

## Local Development Framework



If you would like this document in large print or Braille, or in another language, please contact 020 7974 5615

Find out more about this document and the LDF by visiting [camden.gov.uk/ldf](http://camden.gov.uk/ldf) or by calling the LDF hotline 020 7974 5615/2043.

Forward Planning  
London Borough of Camden  
Town Hall Extension  
Argyle Street  
London WC1H 8EQ

Published November 2010.

Camden's Local Development Framework. Core Strategy 2010.

## CS14. Promoting high quality places and conserving our heritage

- 14.1 Camden does not have a single built character but is made up of many diverse areas, each with their own identity. The southern part of the borough, which forms part of Central London, is characterised by a high density built environment and complex mix of uses. The central part of the borough contains several town centres surrounded by areas of medium-density housing and some employment uses. The north of the borough is predominantly residential of a lower density with substantial open space at Hampstead Heath. Throughout the borough there are examples of Camden's unique architectural heritage, with many high quality buildings and places, old and new. This is reflected in our large number of conservation areas and listed buildings, which have been recognised for their special architectural or historic interest.
- 14.2 Our overall strategy is to sustainably manage growth in Camden so it meets our needs for homes, jobs and services in a way that conserves and enhances the features that make the borough such an attractive place to live, work and visit. Policy CS14 plays a key part in achieving this by setting out our approach to conserving and, where possible, enhancing our heritage and valued places, and to ensuring that development is of the highest standard and reflects, and where possible improves, its local area. Policy CS13 above and policy DP22 in Camden Development Policies set out our approach to ensuring that design in the borough is sustainable and that schemes include measures to minimise the effects of, and adapt to, climate change.

### CS POLICY

#### CS14 – Promoting high quality places and conserving our heritage

The Council will ensure that Camden's places and buildings are attractive, safe and easy to use by:

- a) requiring development of the highest standard of design that respects local context and character;
- b) preserving and enhancing Camden's rich and diverse heritage assets and their settings, including conservation areas, listed buildings, archaeological remains, scheduled ancient monuments and historic parks and gardens;
- c) promoting high quality landscaping and works to streets and public spaces;
- d) seeking the highest standards of access in all buildings and places and requiring schemes to be designed to be inclusive and accessible;
- e) protecting important views of St Paul's Cathedral and the Palace of Westminster from sites inside and outside the borough and protecting important local views.

#### Excellence in design

- 14.3 Camden has many special and unique places and historic and modern buildings of the highest quality. As well as preserving this rich heritage, we should also be contributing to it by making sure that we create buildings of equally high quality that will be appreciated by future generations. The design of the places and buildings that make up our local environment affects us all and our quality of life. High quality design is visually interesting and attractive but it is not just about what things look like. Good design makes places that put people first, are welcoming, feel safe and are enjoyable and easy to use for everyone, whether they are living in, working in or just passing through the borough.

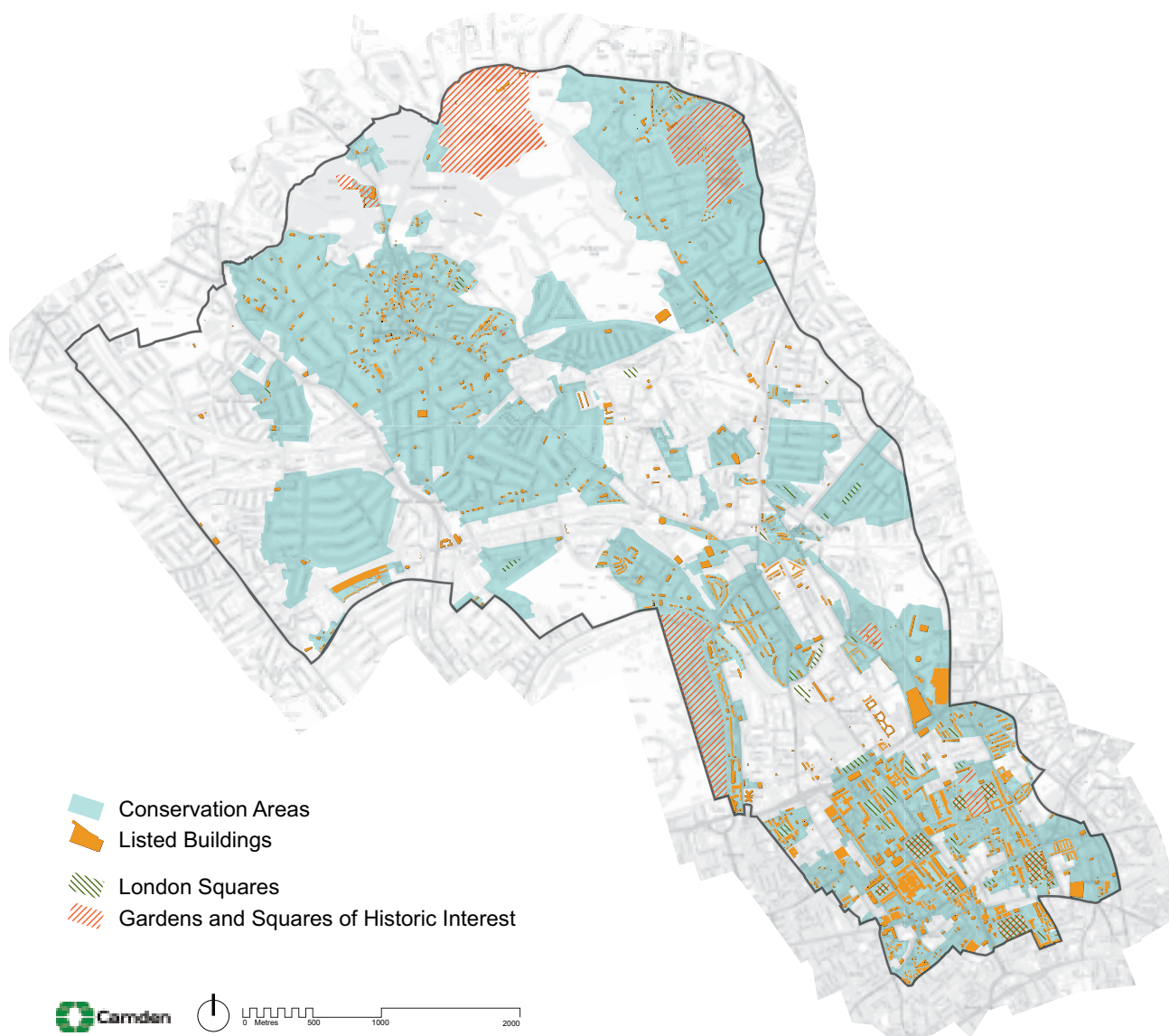


- 14.4 Development schemes should improve the quality of buildings, landscaping and the street environment and, through this, improve the experience of the borough for residents and visitors. The Council will therefore insist on high quality design throughout the borough. In accordance with government guidance in Planning Policy Statement (PPS) 1 – *Delivering Sustainable Development* we will not accept design that is considered inappropriate to its context or which fails to take opportunities to improve the character and quality of an area and the way it functions. Please see Camden Development Policies (policy DP24) for more detailed guidance on our approach to the design of new development and alterations and extensions. When assessing design, we will also take into account government/CABE guidance *By Design – Urban Design in the planning system: towards better practice* and our own Camden Planning Guidance supplementary document.
- 14.5 The Council is working with its partners to promote and celebrate excellence in design and improve public buildings, landscaping and the street environment; for example through the Camden Design Initiative, which seeks to improve public space and the built environment and encourage involvement, awareness and understanding of good design, including the bi-annual Camden Design Awards, which recognise high quality and innovative designs.
- 14.6 Good design is safe and accessible, and responds flexibly to the needs of its users. It creates buildings that have minimal negative impact on the environment, during construction and beyond. The construction and use of buildings currently accounts for around half of national carbon emissions and it is therefore vital that new and redeveloped buildings are designed to have a beneficial impact on their environment. See CS13 – *Tackling climate change through promoting higher environmental standards* and CS17 – *Making Camden a safer place* for our approach to these matters.
- 14.7 High quality design also takes account of its surroundings and what is distinctive and valued about the local area. Camden is made up of a diversity of areas, each with their own distinctive character, created by many elements such as architectural style and layout, social and economic history, landscaping and mix of uses – as summarised in the description of Camden’s character below. As Camden is a densely built-up borough where most development involves the replacement, extension or conversion of existing buildings, taking account of context and local character is particularly important. The Council will therefore expect the design of buildings and places to respond to the local area and its defining characteristics and reinforce or, if appropriate, create local distinctiveness.
- 14.8 While tall buildings offer the opportunity for intensive use, their siting and design should be carefully considered in order to not detract from the nature of surrounding places and the quality of life for those living and working around them. Applications for tall buildings will be assessed against policy CS14 and policies DP24 – *Securing high quality design* and DP25 – *Conserving Camden’s heritage* in Camden Development Policies, along with the full range of policies on mixed use, sustainability, amenity and microclimate. and other relevant policies. Effect on views, impact on local microclimate and provision of communal and private amenity space will also be important considerations.

## Camden's heritage

- 14.9 Camden has a rich architectural heritage with many special places and buildings from throughout Camden's history (see map 6). 39 areas, covering much of the borough, are designated as conservation areas, recognising their special architectural or historic interest and their character and appearance. We have prepared conservation area statements, appraisals and management strategies that provide further guidance on the character of these areas. We will take these documents into account as material considerations when we assess applications for planning permission and conservation area consent in these areas.
- 14.10 Over 5,600 buildings and structures in Camden are nationally listed for their special historical or architectural interest, and 53 of the borough's squares are protected by the London Squares Preservation Act 1931. In addition, 14 open spaces in Camden are on English Heritage's Register of Parks and Gardens of Special Historic Interest. The Council will consult with English Heritage over proposals affecting these parks and gardens. We also encourage the restoration and management of Parks and Gardens of Special Historic Interest and London Squares to enhance their value. Camden also has a generally well-preserved archaeological heritage, with 13 identified archaeological priority areas, although this can be vulnerable to modern development and land use.

### Map 6: Heritage



This map is based on Ordnance Survey Material with the permission of Ordnance Survey on behalf of the Controller of Her Majesty's Stationery Office ©. Unauthorised reproduction infringes Crown copyright and may lead to prosecution or civil proceedings. Licence number LA100019728, year 2010.

- 14.11 We have a responsibility to preserve and, where possible, enhance our heritage of important areas and buildings. Policy DP25 in Camden Development Policies provides more detailed guidance on the Council's approach to protecting and enriching the range of features that make up our built heritage.
- 14.12 Architectural detail, materials, colour and structures such as walls can make a significant contribution to the appearance of an area, but can often be altered without the need for planning permission. Cumulatively, many minor building works can gradually erode the quality of an area and undermine the quality of conservation areas. We will therefore make use of 'Article 4 Directions' in appropriate locations to bring some minor works under planning control. We are intending to introduce such measures in the conservation areas of Belsize, Hampstead, and Swiss Cottage, where loss of historic character through cumulative change is apparent. Primrose Hill conservation area already benefits from a comprehensive Article 4 Direction, which has helped to retain its high quality historic character.

### **Landscaping and public realm**

- 14.13 The quality of our streets and public spaces affects the quality of all our lives. We enjoy being in and passing through attractive, clean and well-maintained places, but are discouraged from walking in and through areas with a poor environment. An enhanced public realm should integrate transport and land use, contribute to improved walking and cycling environments, respect and reinforce local identity and character, attract people to the area and encourage the use of streets and public spaces to create diverse, vibrant and lively places.
- 14.14 The Council is committed to improving Camden's streets and public spaces and has carried out many improvement schemes with many more ongoing and planned. We have produced a Camden Streetscape Design Manual to raise the standard of street works throughout the borough. This sets standards for our own works and provides guidance for other agencies. It encourages respect for local character and promotes high quality, clutter-free design to make streets and public places that are safe and easy to use for all.
- 14.15 A number of studies on streets and spaces have been produced, particularly for the south of the borough (e.g. Bloomsbury, King's Cross and St Giles/Tottenham Court Road). These have been commissioned and funded by a range of organisations (including TfL, LDA, Design for London and UCL) sometimes in partnership with the Council. It is procedurally difficult for the Council to adopt these non-statutory documents as formal planning or other guidance. We will therefore look to draw on the best of this work to create a long-term vision for these areas, emphasising local character and providing a high quality environment for walking, which is formally agreed by the Council.
- 14.16 In order to improve the environment for walking in the borough, Camden is committed to the 'Legible London' concept which aims to improve how easily pedestrians can understand the layout of the capital and find their way around by introducing clear and consistent signage and maps. The programme has begun in Covent Garden and Bloomsbury, and future schemes are anticipated around the borough. Camden has also established a 'Place Shaping Board' to consider the most appropriate ways to shape the services, facilities, infrastructure and public realm to meet the needs of current and future populations (see section 4 – *Delivering and Monitoring the Core Strategy*).
- 14.17 Further information on measures being taken by the Council and its partners to improve the quality of our streets and public places is included in CS2 – *Growth areas*, CS8 – *Promoting Camden's centres and shops*, CS11 – *Promoting sustainable and efficient travel*, CS15 – *Protecting and improving our parks and open spaces and encouraging biodiversity*, and CS17 – *Making Camden a safer place*.
- 14.18 High quality landscaping plays an important role in the attractiveness and character of our surroundings. It can improve the setting of buildings, bring trees and other greenery into built-up areas to relieve the hard landscaping and provide shade, and provide habitats for wildlife. The Council will expect development schemes to provide a high standard of landscaping and boundary features, such as walls and fences. We will encourage appropriate use of landscaping in the form of 'green roofs', 'brown roofs' and 'green walls' which have a number of environmental benefits (e.g. in providing wildlife habitats, in helping to cool and insulate buildings and in retaining water, helping to

reduce flooding), as well as being visually attractive. More detail on our approach to landscaping is set out in the Council's Camden Planning Guidance supplementary document and policy DP22 in Camden Development Policies.

### Access

- 14.19 Good access benefits everyone. However, many people are disadvantaged by poor access to facilities and vulnerable and disadvantaged groups, such as the elderly and disabled people, can be particularly affected. Poor access can be caused by difficulties in reaching facilities or by difficulties in using the facilities themselves. The Council requires new buildings and spaces to be inclusive and accessible to all. As accessibility is influenced by perceptions as well as physical factors, buildings should also be designed to appear, as well as be, fully accessible. The Council will require Design and Access Statements for developments to show how the principles of inclusive design, ensuring access for all, have been integrated into the proposed development, and how inclusion will be maintained and managed.
- 14.20 Making roads and pavements and the spaces between buildings fully accessible is as important as making the buildings themselves accessible. The Council will seek improvements for all pedestrians to ensure good quality access and circulation arrangements, including improvement to existing routes and footways. The Camden Streetscape Design Manual and our Camden Planning Guidance supplementary document provide more detailed guidance on this issue.

### Views

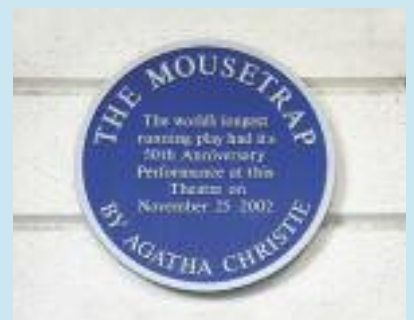
- 14.21 A number of London's most famous and valued views originate in, or extend into, Camden. These are:
- views of St Paul's Cathedral from Kenwood, Parliament Hill and Primrose Hill;
  - views of the Palace of Westminster from Primrose and Parliament Hills; and
  - background views of St Paul's from Greenwich and Blackheath.
- 14.22 The Council will protect these views in accordance with London-wide policy and will resist proposals that would harm them. Where existing buildings that affect a view are redeveloped it is expected that any replacement building will be of a height that does not harm the view. The current framework for protecting these views is set by the London Plan (policies 4B.16 – 4B.18) and the Mayor's London View Management Framework supplementary planning guidance.
- 14.23 The Council will also consider the impact of a scheme, in terms of the townscape, landscape and skyline, on the whole extent of a view ('panorama'), not just the area in the view corridor. Developments should not detract from the panorama as a whole and should fit in with the prevailing pattern of buildings and spaces. They should seek to avoid buildings that tightly define the edges of the viewing corridors and not create a crowding effect around the landmark.
- 14.24 The Council will also seek to protect locally important views that contribute to the interest and character of the borough. These may include:
- views of and from large public parks and open spaces, such as Hampstead Heath, Kenwood Estate, Primrose Hill and Regent's Park, including panoramic views, as well as views of London Squares and historic parks and gardens;
  - views relating to Regent's Canal;
  - views into and from conservation areas; and
  - views of listed and landmark buildings and monuments and statutes (for example, Centrepoint, St Stephen's, Rosslyn Hill and St George's, Bloomsbury).
- 14.25 We will seek to ensure that development is compatible with such views in terms of setting, scale and massing and will resist proposals that we consider would cause harm to them. Development will not generally be acceptable if it obstructs important views or skylines, appears too close or too high in relation to a landmark or impairs outlines that form part of the view. Further guidance on important local views is set out in our supplementary planning documents, for example in individual conservation area statements, appraisals and management strategies and the Planning Framework for the Tottenham Court Road Station and St Giles High Street Area.

## Camden's character

Camden is characterised by a great richness and variety in its built and natural environment, with a valuable heritage of local, national and international significance. The following section describes the places, buildings and features that give Camden its distinctive character.

**The southern part of the borough** is where most of Camden's future growth will take place. It forms part of Central London and has a richly varied and dense character. The planned Georgian streets and squares (e.g. Bedford, Russell, Fitzroy) of Bloomsbury are evidence of the early expansion of London in a form that was architecturally groundbreaking. Modest mews developments to the rear of the terraces contrast in scale and are a particularly characteristic type here and elsewhere in the borough. Regents Park and Nash's 1820s residential development sit at the south western boundary of the borough, contrasting with the earlier Georgian developments in the area.

King's Cross and Euston are parts of the borough that are expected to experience the most change and development over the next fifteen years. Railways have had a significant impact on the appearance of the borough from the 19th century to the present day. These brought monumental architecture and inward migration to the borough and their viaducts, cuttings, tunnels and buildings still affect the shape of development in many parts of Camden, in particular to the north of Euston Road. King's Cross was the largest station in England when it opened and is the earliest great London terminus still intact in its original form. St Pancras (by George Gilbert Scott), now the new London terminus for Eurostar, can claim to be Britain's most impressive station in terms of both architecture and engineering and the station's dramatic roof line forms an important local landmark. Euston station, its ancillary accommodation and railway lines have a major impact on the nature of its surroundings and its future redevelopment will create opportunities to improve the local environment and links between neighbouring areas.







The Inns of Court were some of the earliest establishments in the southern part of the borough. The historic buildings, courtyards and squares of Lincoln's Inn and Gray's Inn give a distinctive atmosphere to this part of Camden, and create oases away from surrounding busy roads. Camden's Central London area also contains Seven Dials with its unusual star-shaped street layout and sundial pillar and the brick, semi-industrial buildings and intimate spaces of Hatton Garden, which were developed in the 19th century to house the workshops and offices of the jewellery trade. The area remains an internationally significant jewellery quarter.

Camden is home to a large number of further education establishments and most are located in the southern part of the borough, including the University of London, London School of Tropical Medicine, Central St Martin's College of Art and Design and the Royal Academy of Dramatic Art. These play a significant role in shaping the character and appearance of this part of the borough. The south of the borough also houses a number of nationally important hospitals and medical research institutions, including Great Ormond Street Hospital, the National Hospital for Neurology and Neurosurgery and the Wellcome Trust.



The town centres of Camden Town, Kentish Town and Kilburn High Road are key elements in **the central part of the borough**. These centres developed in a piecemeal fashion along historic routes into London. They are now marked by continuous, close grained development with commercial units at ground floor level on either side of the road, with terraced housing of a similar density on the streets to the east and west, and little open space. Buildings types are generally consistent in appearance, and public houses are frequent landmarks, which echo the original inns and travellers rests along the historic routes. There is a narrow range of scale and height, and dwellings usually have small gardens to front and rear. Camden Town is strongly characterised by its markets and entertainment. These create a strong draw for tourists and influence the style and appearance of development, which is in many cases colourful and individual.

The areas between these major roads and town centres are characterised by speculative, residential development from the mid to late 19th century for the then new middle classes. These show a variety of distinctive architectural forms and scales, with detached and semi-detached houses in classical Italianate form in Belsize and an eclectic variety of styles including neo-Gothic, Queen Anne, Domestic Revival, Arts & Crafts in Fitzjohns/Netherhall, Redington/Frognaal and South Hampstead/Swiss Cottage. Gospel Oak, West Hampstead and the southern parts of Dartmouth Park were developed to a higher density with terraced houses, smaller gardens and have a more urban feel than Camden's other residential areas.

Social housing schemes are also an important element in the borough's built environment. St Andrews House on Saffron Hill is the oldest surviving public housing block in London whilst early 20th century examples include the London County Council's Bourne Estate on Leather Lane. The LLC's Ossulston Estate is considered the most important inner-city estate of the inter-war period. Post-war examples illustrate an architecturally ambitious programme of housing schemes by Camden Council following its creation in 1965, many of which are listed. The characteristic form was a megastructure of stepped terraces. This low rise, high density approach reflected traditional terraced housing, but provided light, privacy and private open space for all levels of accommodation. Examples are Brunswick Centre, and the estates of Fleet Road, Alexandra Road, Maiden Lane and Highgate New Town.

The Regent's Canal runs through the centre of the borough. Although it is often hidden from surrounding areas, it provides an area of nature conservation interest and amenity space along its course through King's Cross and Camden Town to Regent's Park.

**The northern part of the borough** benefits from the presence of the large open space of Hampstead Heath, which provides amenity and leisure space, a verdant setting to the surrounding development and famous views across London. Hampstead and Highgate are derived from medieval hamlets and have clearly defined village centres which reflect their origins. They have a variety of building types from cottages and terraces to detached houses and grand residences, with a generally densely packed, high quality urban grain of a range of styles, scales and ages. Both areas contain many high quality, architect-designed houses from the 19th and 20th centuries, many of which have become important parts of the local heritage and are listed for their national significance.



### Key evidence and references

- Conservation Area Statements/Appraisals/Management Strategies; London Borough of Camden; various dates
- Camden Walking Plan Second Edition 2006
- Camden Streetscape Design Manual 2005
- Planning Policy Guidance 16 – Archaeology and planning; DETR; 1990
- Conservation Principles, Policies and Guidance, English Heritage, 2008
- By Design: Urban Design in the Planning System – Towards Better Practice; DETR/CABE; 2000
- Planning Policy Statement 1 – Delivering Sustainable Development; ODPM; 2005
- Planning Policy Statement 5 – Planning for the Historic Environment; CLG; 2010
- Planning Policy Guidance 15 – Planning and the Historic Environment; DoE; 1994
- The London Plan (consolidated with Alterations since 2004); Mayor of London; 2008
- London View Management Framework Supplementary Planning Guidance; Mayor of London; 2007
- Sustainable design, climate change and the built environment; CABE Briefing; 2007
- Easy Access to Historic Buildings, English Heritage, 2004
- Easy Access to Historic Landscapes, English Heritage, 2005
- Seeing History in the View: Methodology for assessing the heritage value within views, English Heritage, 2008
- Guidance on Tall Buildings, English Heritage/CABE, 2007



# Camden Development Policies 2010-2025

## Local Development Framework



**If you would like this document in large print  
or Braille, or in another language, please  
contact 020 7974 5615**

Find out more about this document and the LDF by visiting [camden.gov.uk/ldf](http://camden.gov.uk/ldf)  
or by calling the LDF hotline 020 7974 5615/2043.

Forward Planning  
London Borough of Camden  
Town Hall Extension  
Argyle Street  
London WC1H 8EQ

Published November 2010.

Camden's Local Development Framework. Development Policies.

## DP20. Movement of goods and materials

- 20.1 Transport of goods and materials is essential to the economy, but if not managed sustainably it can be harmful to the environment, and cause congestion. As a dense, urban inner London borough the movement of goods in Camden can have particularly strong impacts in terms of traffic movement, noise and air pollution and, in some circumstances, impact on the quality of life of residents. Core Strategy Policy CS11 – Sustainable and efficient travel states that the Council will seek to minimise the movement of goods and materials by road, encourage the use of more sustainable modes of freight movement, and to minimise the impact of the movement of goods and materials on local amenity, traffic and the environment.
- 20.2 Policy DP20 builds on this by setting out the Council's requirements for new developments in relation to the movement of goods and materials both during construction and when in operation. It should be read in conjunction with policy DP16 – Development and transport implications and Core Strategy policy CS11.

### DP POLICY

#### DP20 – Movement of goods and materials

##### Minimising the movement of goods and materials by road

In order to minimise the movement of goods and materials by road the Council will:

- a) expect development that would generate significant movement of goods or materials both during construction and in operation to minimise the movement of goods and materials by road, and consider the use of more sustainable alternatives such as rail and canal links;
- b) promote the development and use of freight consolidation facilities and other initiatives with potential to reduce the impact of goods vehicles, and encourage the use of cycle courier services for local deliveries; and
- c) seek to promote and protect facilities for the movement of goods by rail and water, including facilities for transfer between road, rail and canal.

##### Minimising the impact of the movement of goods and materials by road

The Council will expect development that would generate significant movement of goods or materials by road, both during construction and in operation, to:

- d) be located close to the Transport for London Road Network or other Major Roads;
- e) avoid any additional need for movement of vehicles over 7.5 tonnes in predominantly residential areas;
- f) accommodate goods vehicles on site; and
- g) seek opportunities to minimise disruption for local communities through effective management, including through the optimisation of collection and delivery timings and the use of low emission vehicles for deliveries.



## **Minimising the movement of goods and materials by road**

### **Movement of goods by rail and water**

- 20.3 The Council recognises the problems that are caused by long distance movement of goods by road, and the potential advantages of using rail and water as an alternative. The North London Line, the Gospel Oak to Barking Line and the West Coast Mainline are already used for significant volumes of rail freight. The Regent's Canal provides the potential for more sustainable, lower impact water borne movement of freight. It is the only navigable waterway in Camden, and is not currently used for any significant volume of freight movement.
- 20.4 Per tonne carried, rail freight produces nearly 90% fewer emissions than HGVs (London Rail Freight Strategy 2007). No equivalent figures are available for canal freight, but canal movement has minimal social and environmental costs compared with the noise/vibration, air pollution and visual intrusion that can be created by heavy goods vehicles.
- 20.5 Regent's Canal is thought to be an economically viable route for some freight movements, notably the removal of demolition waste from canal-side sites. The Council will expect new developments along or close to the Canal to consider its use for the movement of goods and materials, and to contribute to the improvement of the Canal towpath, where appropriate. Developers should also make the most of opportunities to use rail links to move goods and materials.
- 20.6 We will protect the existing aggregate handling facility at King's Cross, which is a modern facility re-engineered in association with works for the Channel Tunnel Rail Link. We will also protect other track-side and canal-side sites that are brought forward for transfer use or processing rail and canal freight if their benefits outweigh any harm.

### **Efficient freight movement**

- 20.7 The Camden Core Strategy promotes the use of freight consolidation as a key measure in reducing the number of trips made by goods vehicles, and indicates that there may be potential for a freight consolidation facility serving Camden's Central London Area (Core Strategy paragraph 11.23). The Council will expect developments to take advantage of existing freight consolidation facilities for service deliveries, where they exist. The Council will support proposals for freight consolidation facilities, subject to the other policy measures set out in our Local Development Framework.
- 20.8 As part of its approach to minimising road freight, the Council will discourage frequent deliveries of biomass fuel associated the sustainability and renewable energy requirements set out in policy DP22 and Core Strategy policy CS13 and in relation to climate change and sustainable design and construction. Paragraph 32.6 below addresses the air quality impacts associated with the burning of biomass fuel.



### Cycle freight

- 20.8 The Council will promote the use of cycle-freight as an extension to cycle courier services by encouraging developers to make provision for cycle freight as part of Delivery and Servicing Management Plans. This provides the potential to manage deliveries in a way that is zero carbon, has little or no noise or air pollution implications, and has a minimal impact on congestion.

### Minimising the impact of the movement of goods and materials by road

- 20.9 Goods vehicles, particularly heavy goods vehicles, can have negative impacts on local amenity and traffic movement in certain areas. Examples are areas suffering from poor air quality, areas where many delivery points are located close together (such as town centres), residential areas and narrow roads. Goods vehicles manoeuvring, loading and unloading add to pollution, and may cause obstructions and congestion, inconvenience and danger to pedestrians and other road users, and damage to pavements. The Council actively encourages a number of measures with potential to mitigate these impacts.

### Moving goods and materials on appropriate roads

- 20.10 Policy DP21 – *Development connecting to the highway network* seeks to guide all forms of transport to the appropriate parts of Camden’s road hierarchy. The roads considered to be most suitable for use by lorries and other heavy goods vehicles are those in the Transport for London Road Network and others designated as Major Roads. It will not usually be possible for development to directly access or be loaded from the Transport for London Road Network, but new development that will be served by heavy goods vehicles should be located to minimise the use of district and local roads for the movement of goods, particularly roads which provide primarily for access to residential properties.
- 20.11 The majority of service trips in central and inner London are made by freight vehicles of less than 7.5 tonnes gross vehicle weight, and this is the maximum size of vehicle that should be accommodated in residential areas on a daily basis. A number of weight limits have been introduced across largely residential parts of the borough, the largest of which covers an area between Camden Road and Kentish Town Road, and between Fortess Road and Highgate Road, extending up to Highgate. In this area, goods vehicles exceeding 7.5 tonnes are not permitted except for access.



### **Accommodating goods vehicles on site**

- 20.12 The impact of goods vehicles can be reduced where a loading and unloading bay is included within a development, particularly where the bay can be enclosed. Developments that will need to be serviced by vehicles other than bicycles or cars should incorporate space within the site for goods vehicles wherever it is feasible to do so. The space required for service vehicles is set out in the Council's Parking Standards at Appendix 2.

### **Construction management plans**

- 20.13 Where appropriate, the Council will ensure that applicants provide Construction Management Plans to demonstrate how a development will minimise impacts from the movement of goods and materials during the construction process. Construction Management Plans should deal with the hours of site activity; pick-up and delivery times for materials and equipment; limits on construction vehicle size; trip numbers and routes; the safety of road users during construction; and any temporary use of the highway for siting of construction plant. They should also deal with any temporary disruption or severance of highway links needed during the development process, as well as any other relevant measures needed to manage the construction phase.
- 20.14 Our Camden Planning Guidance supplementary document sets out further details regarding the Council's requirements for Construction Management Plans. See also policy DP26 for information regarding the Council's approach to managing the impact of the construction process on local amenity.

### **Effective management of servicing and deliveries**

- 20.15 The Council will seek Delivery and Servicing Management Plans for developments that are likely to generate a significant need for the movement of goods and materials when occupied, in order to ensure that potential impacts are minimised.
- 20.16 The way that trips are managed will influence their impact on local communities, traffic movement and the environment. Delivery timings can also have a significant influence on the impact of goods movement, both on the highway network (including site specific and cumulative impacts), and on residential amenity from deliveries made out of working hours. The Council will therefore ensure that delivery timings are managed to optimal effect through the use of Delivery and Servicing Management Plans. We will also control the impact of goods vehicles through waiting and loading restrictions.
- 20.17 The Council will promote the use of quiet and low-pollution vehicles such as electric vehicles by encouraging developers to make provision for the use of such vehicles as part of Delivery and Servicing Management Plans. Low emission vehicles can significantly reduce noise and air pollution, and therefore offer the opportunities for necessary freight trips to be undertaken using vehicles that have a much lower impacts than standard freight vehicles.
- 20.18 Our Camden Planning Guidance supplementary document sets out further details regarding the Council's requirements for Delivery and Servicing Management Plans.

#### **Key evidence and references**

- Camden Local Implementation Plan (LIP) 2005/06 – 2010/11
- Camden Green Transport Strategy 2008 – 2012
- The London Plan (consolidated with Alterations since 2004); Mayor of London; 2008
- Planning Policy Guidance (PPG) 13: Transport; ODPM; 2001
- West London Canal Network Study – Phase 1 & 2: Developing Water Borne Freight on the West London Canal Network; Transport for London/ British Waterways London; September 2005

## DP21. Development connecting to the highway network

- 21.1 Core Strategy policy CS11 states that the Council will ensure that growth and development has regard to Camden's road hierarchy and does not cause harm to the management of the road network. Policy DP21 sets out the Council's expectations for development linking directly to the highway network, and also to the Council's own highway management works. The term highway includes all footpaths and cycleways in the borough (including those not alongside roads) that are managed by the Council or Transport for London as Highway Authority. Policy DP21 should be read in conjunction with policies DP16, DP17 and DP19 and Core Strategy policy CS11.
- 21.2 The Council has a duty to provide for the efficient movement of vehicles and pedestrians on the road network. We do this by enabling and promoting walking, cycling and public transport, which have potential to limit the pressure on existing network capacity and allow the best use to be made of existing road space. The balance struck between different users on each link in the network will depend on the link's character and its role in the road network. To enable the network to operate efficiently and safely, connections from new developments need to reflect the nature of the link that they connect to.

### DP POLICY

#### DP21 – Development connecting to the highway network

The Council will expect developments connecting to the highway network to:

- a) ensure the use of the most appropriate roads by each form of transport and purpose of journey, in accordance with Camden's road hierarchy;
  - b) avoid direct vehicular access to the Transport for London Road Network (TLRN) and other Major Roads; and
  - c) avoid the use of local roads by through traffic.
- The Council will expect works affecting highways to:
- d) avoid disruption to the highway network and its function, particularly use of appropriate routes by emergency vehicles;
  - e) avoid harm to on-street parking conditions or require detrimental amendment to Controlled Parking Zones;
  - f) ensure adequate sightlines for vehicles leaving the site;
  - g) address the needs of wheelchair users and other people with mobility difficulties, people with sight impairments, children, elderly people and other vulnerable users;
  - h) avoid causing harm to highway safety or hinder pedestrian movement and avoid unnecessary street clutter;
  - i) contribute to the creation of high quality streets and public spaces; and
  - j) repair any construction damage to transport infrastructure or landscaping and reinstate all affected transport network links and road and footway surfaces following development.

Where development will be connected to the highway network, the Council will require all new public highways to be constructed to a standard it considers to be appropriate for adoption, and expect the routes to be adopted, owned and managed by the relevant Highway Authority.

- 21.3 The Council has prepared a Road Network Management Plan, which sets out how it will manage the use of streets and street spaces and the considerations it will apply when designing and laying out street spaces and controlling traffic flows. This helps the Council to fulfil its network management duty, under which we aim to provide for efficient movement of vehicles and pedestrians and to reduce disruption and congestion.

- 21.4 The main routes in Camden’s road hierarchy are shown on Map 1, and discussed briefly in paragraph 21.6 below. In managing future development, the Council uses the hierarchy to pursue the following aims:
- to limit the number of routes available to through traffic;
  - to remove goods vehicles from unsuitable routes;
  - to improve conditions for pedestrians and cyclists;
  - to reduce the risk of long delays to bus services;
  - to reduce accidents; and
  - to reduce the adverse environmental impact of traffic.
- 21.5 The Road Network Management Plan commits the Council to making the best use of the limited network capacity available. Within the road hierarchy, it is the upper tier designations that impose the greatest constraints on developments. The long-distance and London-wide traffic role of the Transport for London Road Network and major roads in the Strategic Road Network should take precedence over access requirements for individual development sites and premises.
- 21.6 The Council will have regard to the following hierarchy of roads when assessing proposals for developments connecting to the highway network:
- Transport for London Road Network (TLRN): creating new accesses from these key arterial routes will not usually be acceptable. Use for on-street servicing will also generally not be acceptable. Transport for London is the Highway Authority for these roads;
  - Strategic Road Network: proposals that would be likely to lead to delays to road traffic are unlikely to be acceptable. Although Camden is the Highway Authority for the roads on this network, Transport for London has powers of veto over any proposals that would lead to delays in the movement of traffic;
  - Other major roads: traffic flow, including for buses and emergency services, is also very important along these roads. Use of these roads for on-street servicing will be limited. Camden is the Highway Authority for these, and all other lower order roads;
  - District Roads: although locally important distributor roads, these roads should not be used by heavy goods vehicles except for essential deliveries. District roads provide direct access to many properties, and on-street servicing may be acceptable subject to its impact on safety and the environment.
  - Local roads: providing direct access to properties, these roads are not appropriate for bus or emergency routes. On-street servicing may be acceptable subject to impact on safety and the environment. The Council will prioritise pedestrians in treatment of local roads, and may use measures such as road closures and lorry bans to prevent use by vehicular through-traffic.
- 21.7 Further information on Camden’s approach to managing roads on its network is set out in the Camden Planning Guidance Supplementary Document and the Camden Road Network Management Plan.



## Map 1: Road Hierarchy



This map is based on Ordnance Survey Material with the permission of Ordnance Survey on behalf of the Controller of Her Majesty's Stationery Office ©. Unauthorised reproduction infringes Crown copyright and may lead to prosecution or civil proceedings. Licence number LA100019726, year 2010.

### Works affecting highways

- 21.8 In assessing proposed works affecting highways, the Council takes into account a variety of issues, including the function of the highway network (see above), on-street parking conditions, safety, the needs of different road users, and the need for proper integration with the wider road network.
- 21.9 Given the high level of parking stress experienced in much of Camden, the creation of new links to access development should not involve overall loss of one or more on-street parking spaces, particularly in areas of parking stress. The Council will consider relocating kerbside parking spaces to allow access to development, but only provided that any necessary amendment to the road layout and the Controlled Parking Zone will be funded by the development and can be achieved without harming other road users or highway safety.
- 21.10 In order to protect the safety of pedestrians, cyclists and motor vehicles, connections to the highway network should be designed with appropriate sightlines, visibility splays and queuing distances to reflect the character of the development, local highway conditions, traffic speeds and pedestrian activity. Guidance is included in the Department for Transport's Manual for Streets, the Camden Streetscape Design Manual and our Camden Planning Guidance supplementary document.

- 21.11 The Council will promote transport facilities, services and street space arrangements that accommodate the needs of all users, including vulnerable users such as disabled people. We will expect balanced use of street space that provides for all transport users and accommodates sustainable transport measures, including facilities for pedestrians, cyclists and buses. The Camden Local Implementation Plan sets out the Council's hierarchy of road users. The priority given to different users will vary from one road to another depending on its role, however, the Council places pedestrians at the top of the hierarchy of road users over the network as a whole.
- 21.12 We are particularly concerned to ensure that new routes are designed and constructed to be safe for all users, in accordance with the criteria for works affecting highways. Any history of traffic-related accidents in the vicinity of proposals will be taken into account when assessing proposals. As part of our approach to promoting road safety, the Council will use formal safety audits at the planning, design and implementation stages of highway works, to independently review the implications of proposed works. It is also important that development does not hinder pedestrian movement, and the Council will not support proposals that involve the provision of additional street furniture that is not of benefit to highway users.
- 21.13 Core Strategy policy CS14 *Promoting high quality places and conserving our heritage* underlines the need for high quality landscaping and works to streets and public spaces. To achieve integration into the network and the public realm, design and construction should also reflect the style and materials used in local public spaces and their surrounding buildings. Considerations include planting, landscaping, paving materials and street furniture, and avoiding a confusing variety of signs, surfaces and materials. The quality of design, landscaping, materials and construction should reflect Camden's Streetscape Design Manual. Transport for London's Streetscape Guidance will also be relevant to any public realm improvements on the Transport for London Route Network. Materials should be durable, and the Highway Authority should not incur disproportionate maintenance costs in the future. The Council will expect any damage to public or private land (such as grass verges and any landscaped areas) caused by works to highways to be repaired.

## Adoption of highways

- 21.14 It is important that the best use is made of new links to the highway network (whether roads, footpaths, cycle routes). The Council will therefore seek to ensure that access routes are available to the public as rights of way, maximising levels of activity and permeability and contributing to natural surveillance. The Council considers that this can best be achieved where the relevant Highway Authority adopts access routes as part of the public realm. In most cases, the new links will be managed by the Council as the Highway Authority, but Transport for London is the Highway Authority for the Transport for London Road Network.
- 21.15 This can only be achieved if new links are built to an appropriate standard for the role that they will fulfil in the network, and are subsequently managed as part of the highway network. The Council will expect any links built by a developer to provide the same quality of design, materials and construction as works commissioned by the relevant Highway Authority.

### Key evidence and references

- Camden Local Implementation Plan (LIP) 2005/06 – 2010/11
- Camden Green Transport Strategy 2008 – 2012
- Camden Streetscape Design Manual March 2005
- The London Plan (consolidated with Alterations since 2004); Mayor of London; 2008
- Planning Policy Guidance (PPG) 13: Transport; ODPM; 2001