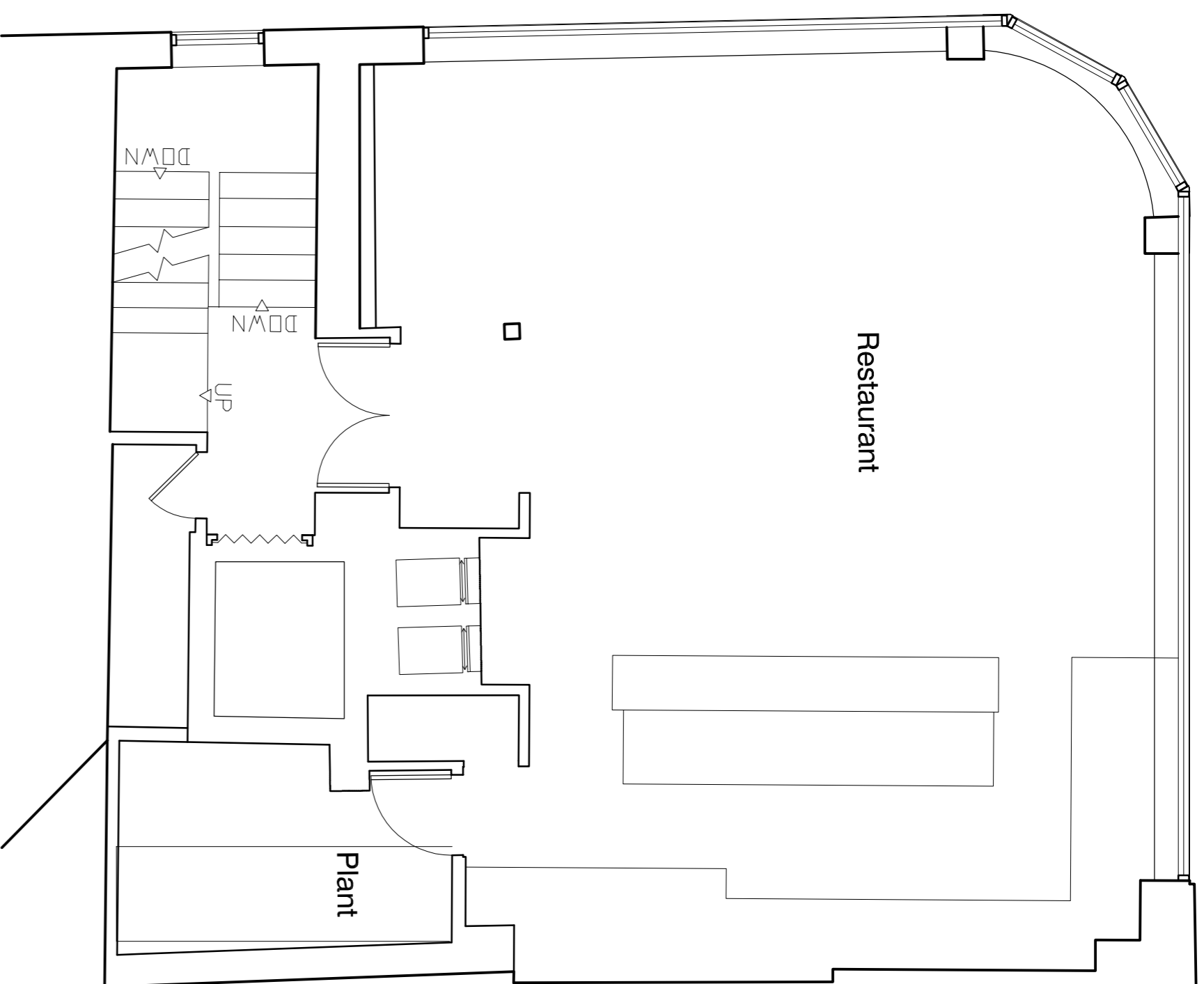


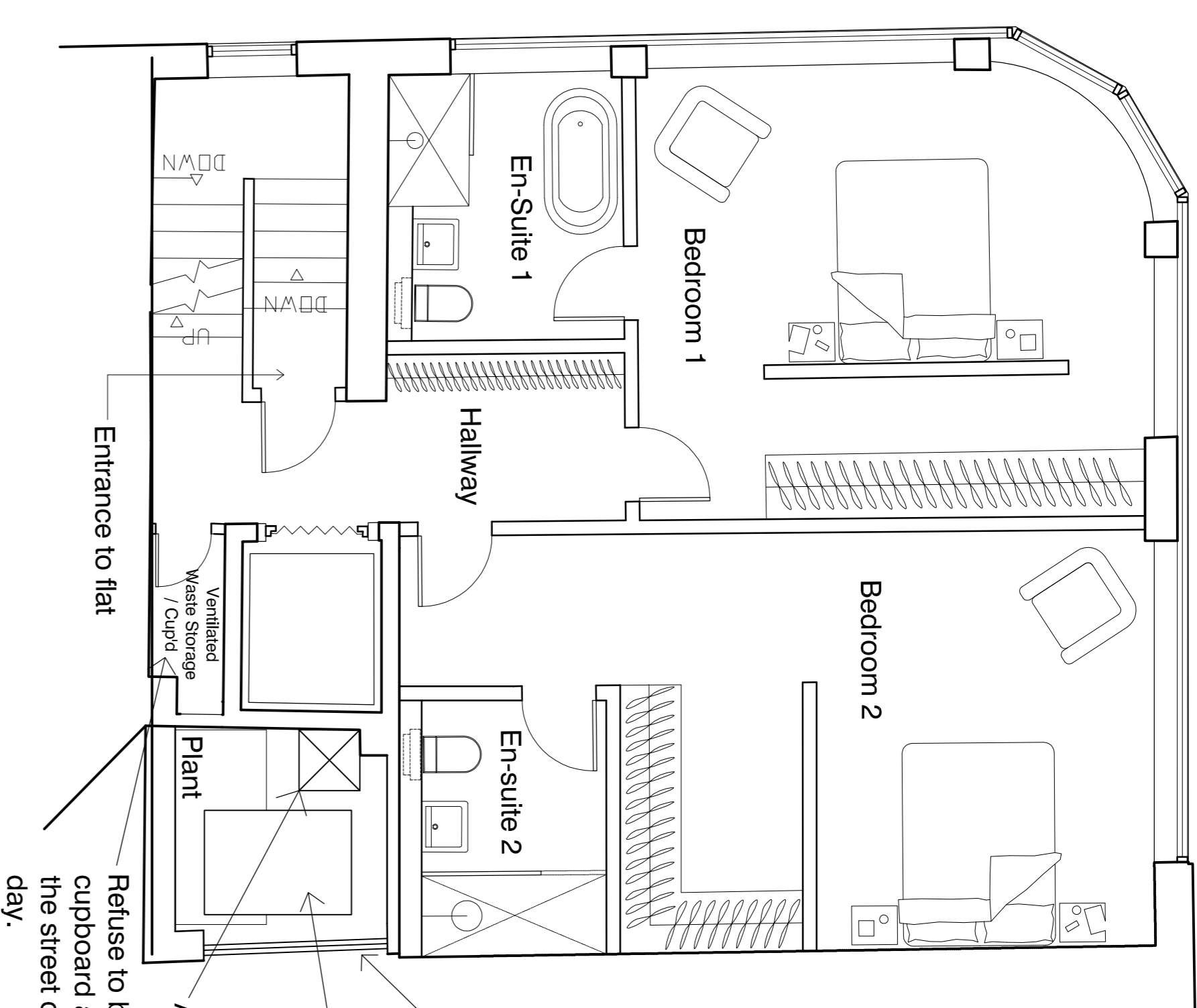
**First Floor Plan**

Gross Internal Floor Area - 86m<sup>2</sup>



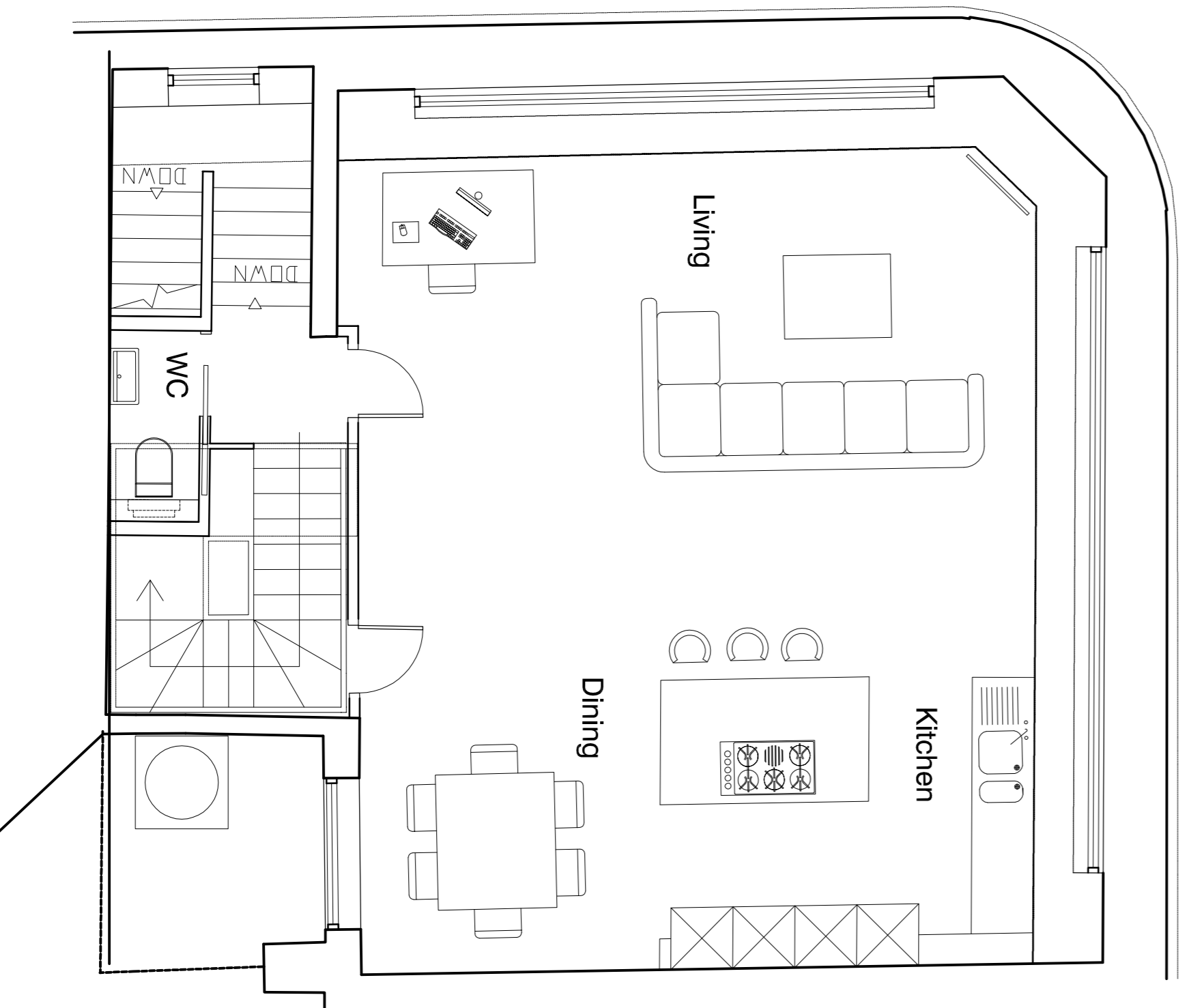
**Second Floor Plan**

Gross Internal Floor Area - 84m<sup>2</sup>



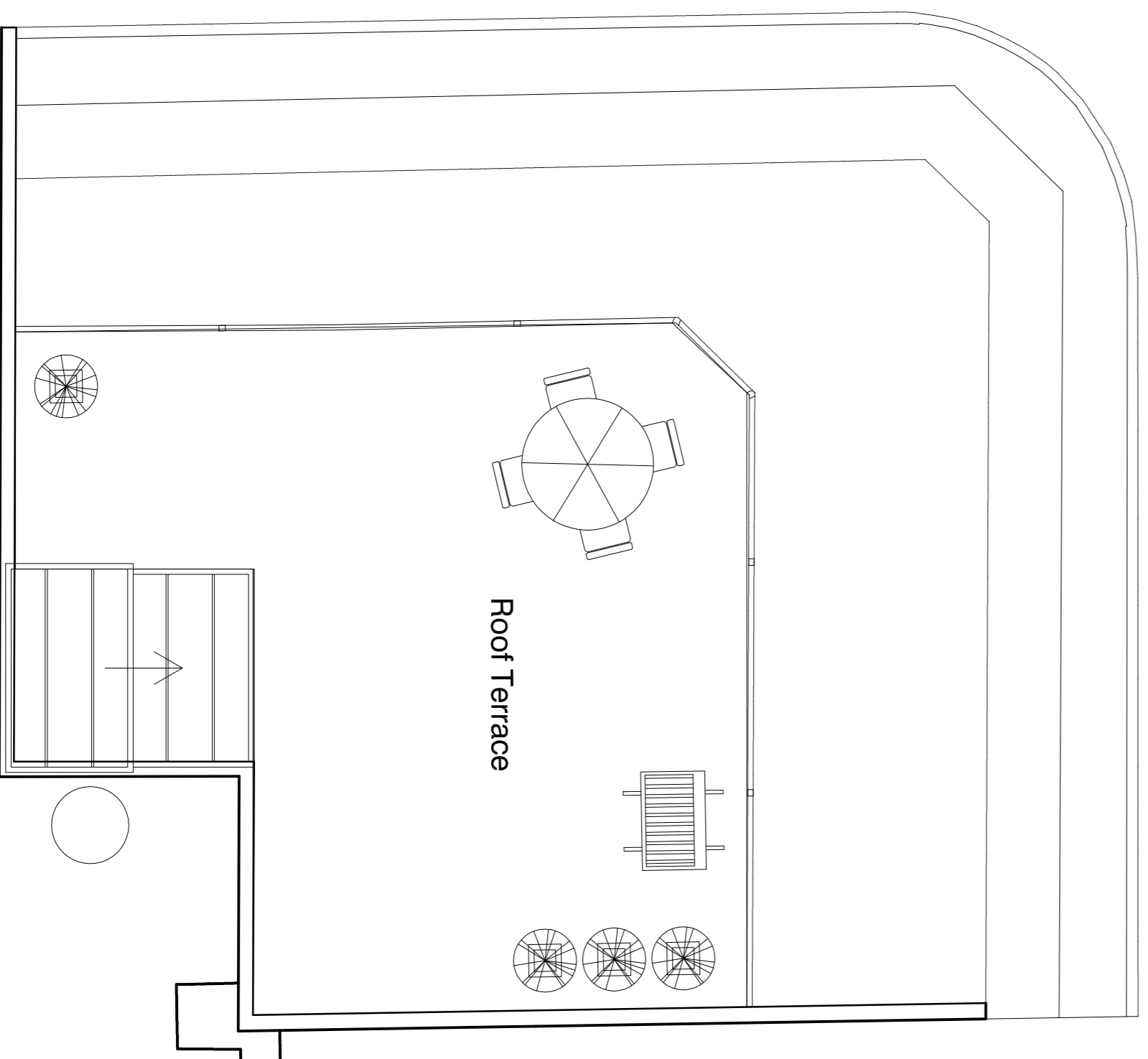
**Third Floor Plan**

Gross Internal Floor Area - 79m<sup>2</sup>



**Fourth Floor Plan**

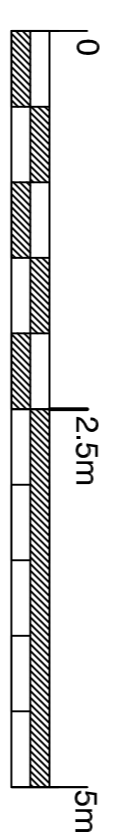
Gross Internal Floor Area - 66m<sup>2</sup>



**Roof Floor Plan**

Terraced Area - 33m<sup>2</sup>

# PLANNING



Note:  
All areas are approximate

Rev	Description	Issued	Drawn	CHK

**Client**  
Fenton Property Management

**Project**  
15-17 Goodge Street  
London  
W1T 2PQ

**Drawing**  
**PROPOSED**  
Floor Plans  
(First Floor to Roof Level)

Scale	Date	Drawn	Checked
1:50 @ A1	July '15	PC	IF

**Brookes Architects**

Upstairs at The Garage, Bank Lane,  
London SW1S 5JT  
T 020 8487 1223  
F 020 8676 4172  
E info@brookesarchitects.co.uk  
www.brookesarchitects.co.uk