

- General Notes:**
1. Copyright of this drawing remains the sole property of Cooley Architects unless otherwise assigned in writing.
  2. Do not scale from this drawing, figured dimensions are to be worked in all cases with any discrepancies reported to the Architect prior to commencement of any work.
  3. Setting-out is based on outline survey only. All dimensions to be checked on site prior to construction/ ordering.
  4. All dimensions are to edge/ centre of structural element of wall or to grid-line, unless noted. If unclear consult Cooley Architects.

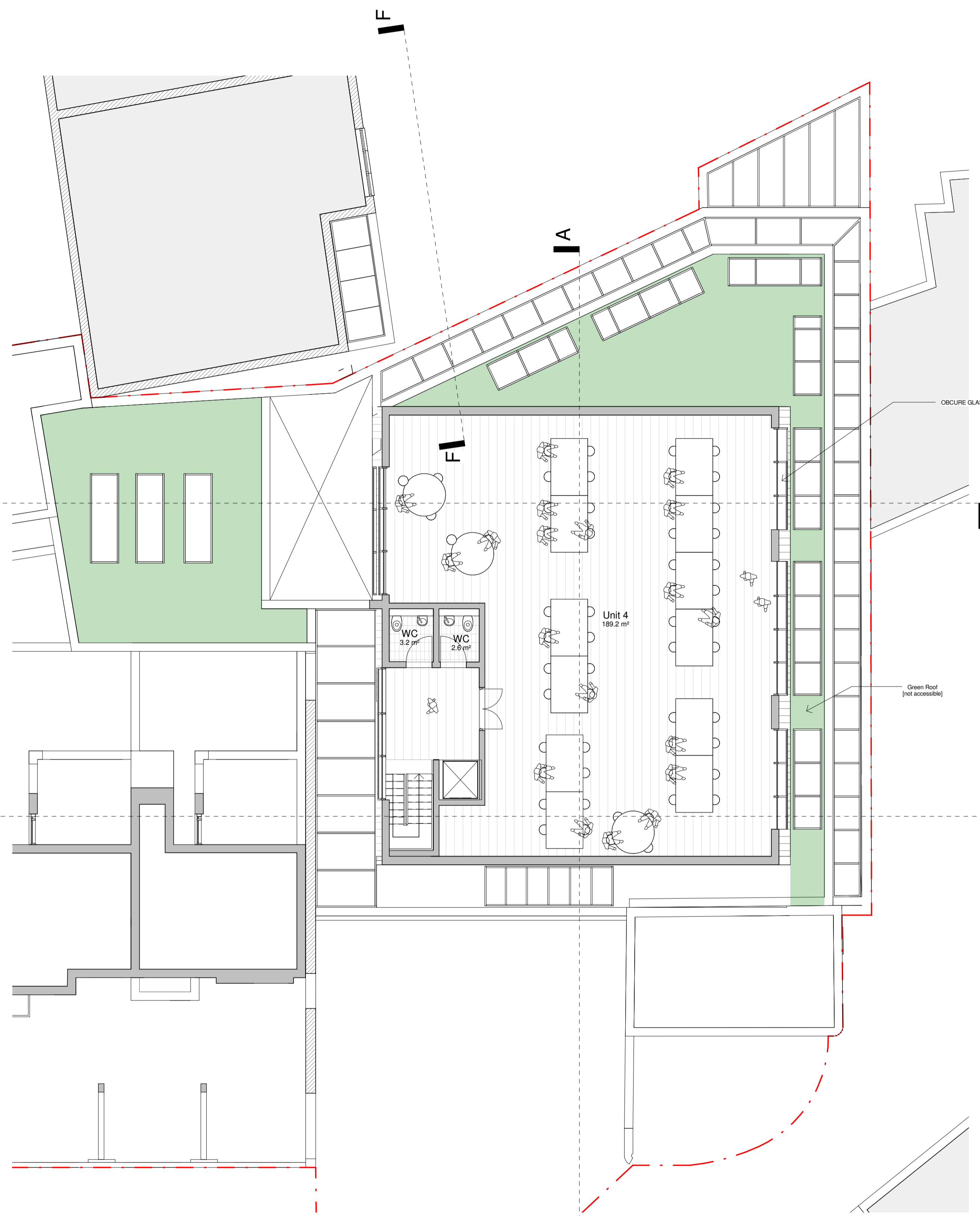
- Legend**
- Existing Walls
  - Proposed Walls
  - Site Boundary
  - Unit Entrance
  - PV Panels

**Commercial Room Schedule**

Ground Floor	
Bins Store	30.3m <sup>2</sup>
Cycle Store	26.9m <sup>2</sup>
WCs	6.2m <sup>2</sup>
Unit 1	319.2m <sup>2</sup>
First Floor	
WCs	6.2m <sup>2</sup>
Unit 2	296.0m <sup>2</sup>
Unit 3	60.6m <sup>2</sup>
Second Floor	
WCs	5.8m <sup>2</sup>
Unit 4	189.2m <sup>2</sup>



**1 Commercial - Level 1**  
1 : 100



**2 Commercial - Level 2**  
1 : 100

REV	BY	DESCRIPTION	CKD	DATE
D		Changes according to meeting in Camden Council Offices	7	18/11/2015
C		Schedule of areas has been updated	5	10/11/2015
B		Roof has been reshaped	2	05/11/2015
A		Layout has been updated	1	06/10/2015

**Cooley | Architects**

123 Aldersgate Street London EC1A 4JQ  
020 3176 4481 www.cooleyarchitects.com

CLIENT  
The Estate Charity of Eleanor Palmer

PROJECT  
36-52 & 20 Fortess Grove

DRAWING TITLE  
Commercial Floor Plans as Proposed  
(2 of 2)

DRAWN BY	DATE	CHECKED BY
NB	June 15	RC, SD
SCALE	SIZE	STATUS
As indicated	A1	Planning
DRAWING NUMBER	REVISION	
687-LY-0X05	D	