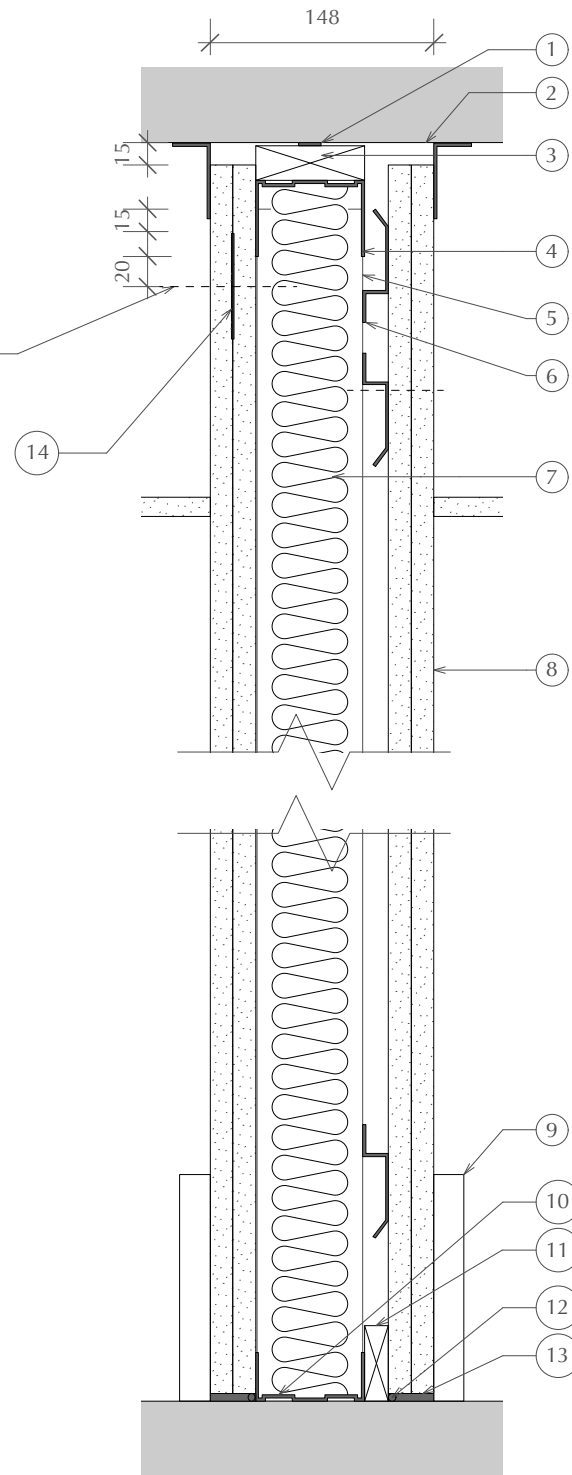
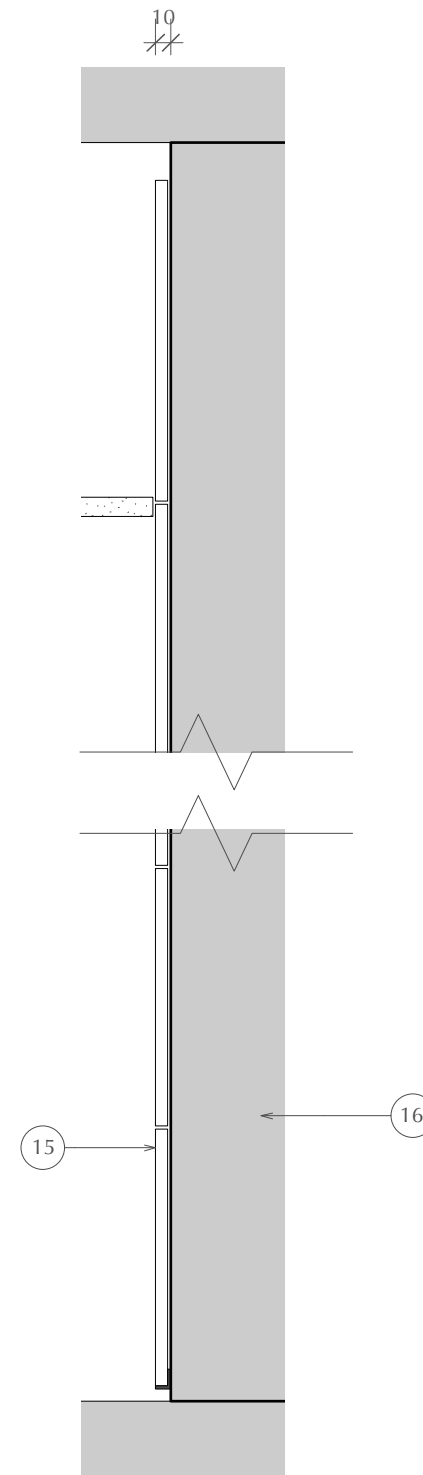


The board fixings should be made into the head channel.  
 This is the uppermost board fixing, which should be made into Gypframe GFS1 Fixing Strap.  
 Continuous Gyproc Fire Strip must be installed as shown to maintain fire performances.



Type C - Radio Room Acoustic Partition  
 K10/125C



Type D - Tiling to existing wall  
 Tiles - M40/110

- Notes**
1. Gyproc FireStrip (continuous)
  2. Gypframe Steel Angle
  3. Gyproc Coreboard
  4. Gypframe Extra Deep Flange Floor & Ceiling Channel fixed to timber head plate
  5. 70mm Gypframe 'C' Studs, at 600mm centres
  6. Gypframe RB1 Resilient Bar
  7. Isover Insulation APR 1200 50mm
  8. 2 x 15mm Gyproc SoundBloc
  9. 150mm painted timber skirting, planted
  10. Gypframe 72 C 50 Standard Floor & Ceiling Channel
  11. 16x50mm timber packer
  12. Gyproc Sealant
  13. Bulk fill wit Gyproc jointing materials (where gap exceeds 5mm)
  14. Gypframe GFS1 Fixing Strap
  15. M40/110
  16. Existing wall.

No.	Date	Issue Notes
1	23/9/15	Issued for Planning

Copyright for these drawings remains with Cove Burgess Architects LLP. All dimensions to be checked on site prior to construction. Any discrepancies to be brought to the attention of the architect, prior to construction.

Project Title  
 Smart Energy  
 1 Alfred Mews

Sheet Title  
 Partition Details Type C+D

Scale  
 1:5 @ A3

Date Printed  
 23/9/15

Drawing No.  
 3044-2202

Revision  
 P1