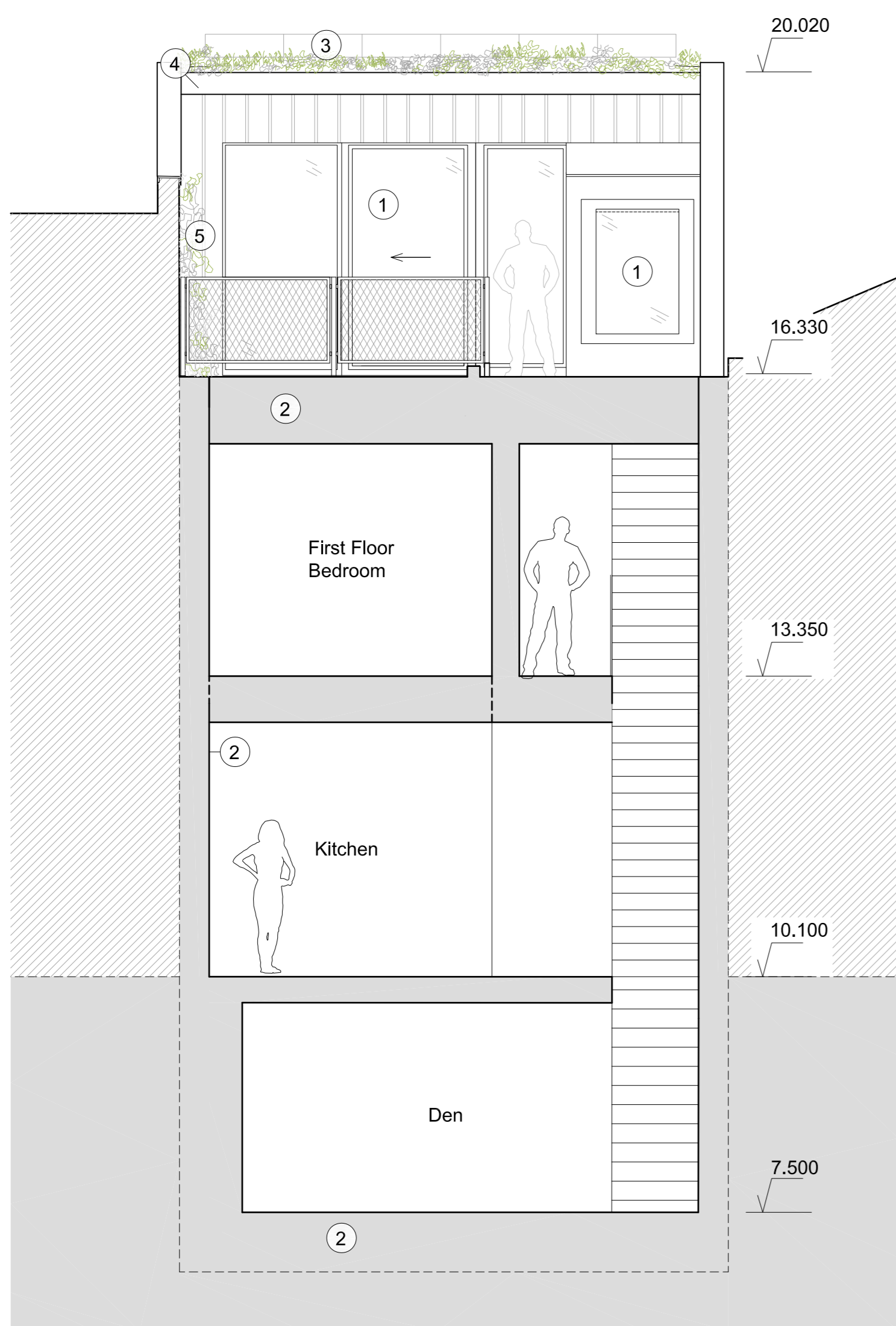


Section AA

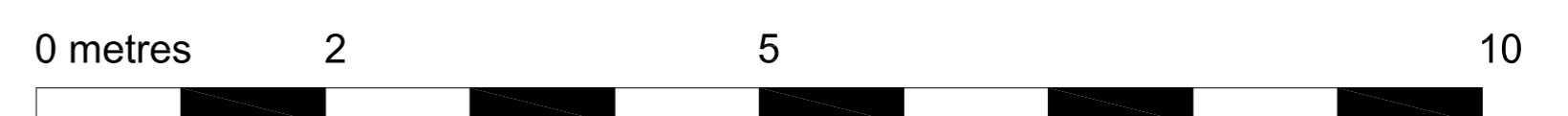
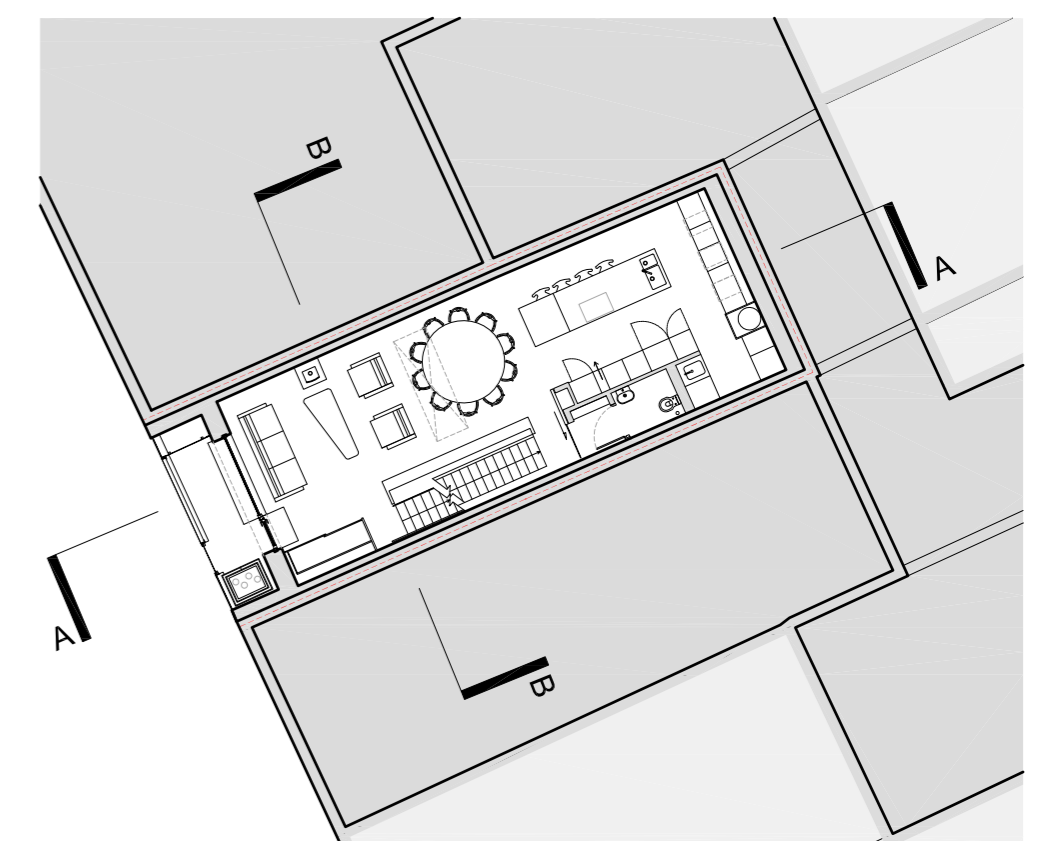
Section AA

- 1 Rooflights to first and ground floors
- 2 Triple glazed Passivhaus windows
- 3 Highly insulated walls, floor and roof.
- 4 Photovoltaics providing renewable energy for hot water.
- 5 Meadow planting or sedum mix as appropriate.
- 6 Brick façade, London stock bricks
- 7 Lightwell
- 8 Structural rooflight
- 9 Rooflight over stairwell to second floor
- 10 Stainless steel mesh screen
- 11 Cycle store
- 12 Planting in planters



Section BB

- 1 Triple glazed Passivhaus windows
- 2 Highly insulated walls, floor and roof.
- 3 Photovoltaics providing renewable energy for hot water
- 4 Meadow planting or sedum mix as appropriate.
- 5 Planting in planter, trained up wall



Rev	Description	Date	By	Chk
1	Use figured dimensions only			
2	Do not scale from this drawing			
A	Planning Issue	20.07.12	CS	JB
B	Revised Ground Floor Elevation	04.10.12	CS	JB
C	Excercise Room Revision	08.10.12	CS	JB
D	Revised Ceiling Heights	15.10.12	CS	JB
E	Revised Rear Elevation	16.10.12	CS	JB
F	Updated to altered design	29.08.13	SD	TB
G	Updated to altered design	12.09.14	JC	TB
H	Fencing to lightwell shown	23.10.14	LW	--
I	Fencing providing guarding at party wall			
J	Gap in PVs for access added	02.04.15	LW	--
	Solar thermal change to more PV			
	Text updates	01.10.81	LW	--

Proposed

Project: 398km 25 King's Mews
Subject: Section AA
 Section BB
Scale: 1:50 @ A1
Date: 10.01.12

bere:architects

73 Poets Road, London, N5 2SH
 T +44 (0) 20 7359 4503 F +44 (0) 20 7424 5572 bere@bere.co.uk

Project Drawing Rev
0398.B5.G20.s00 J