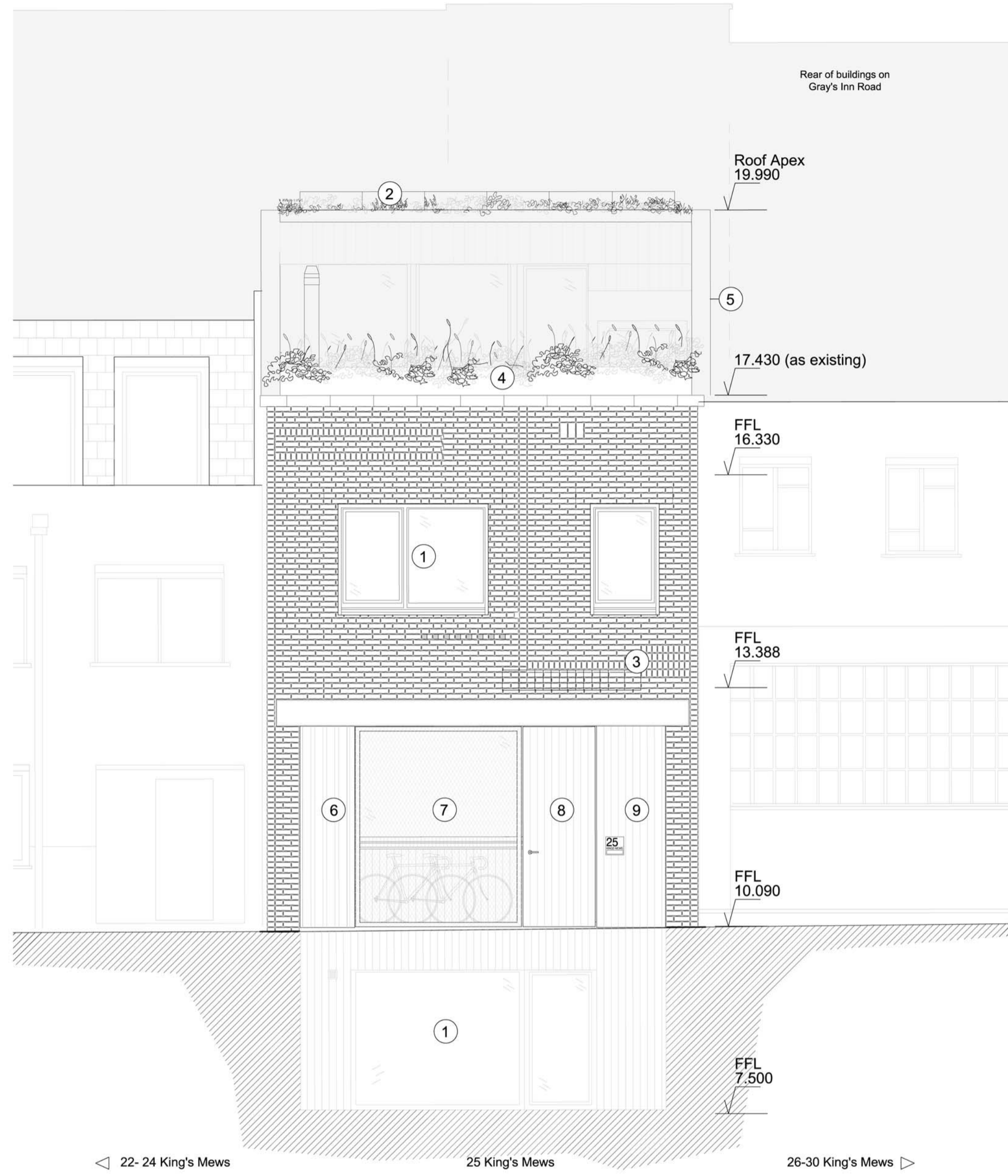
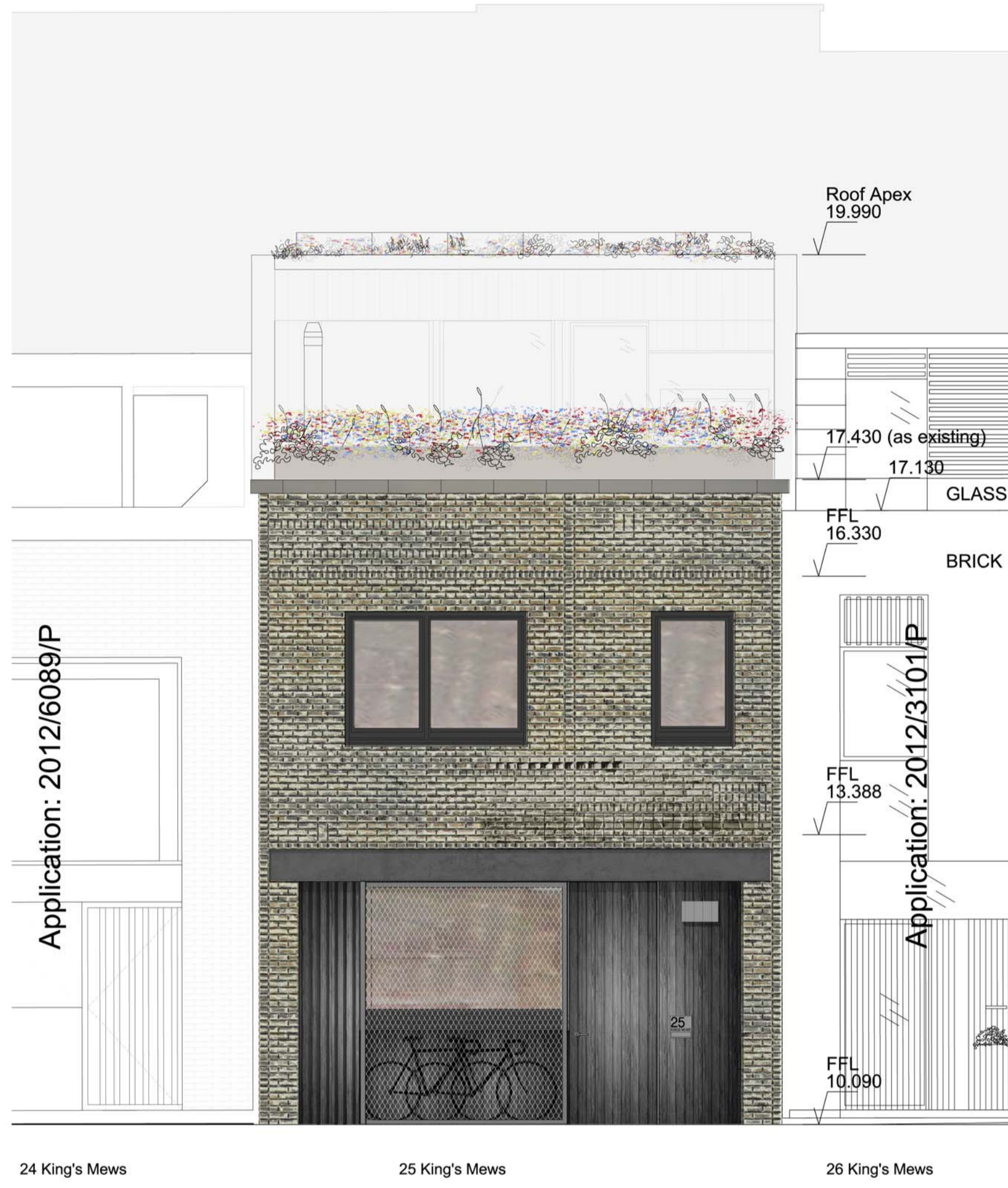


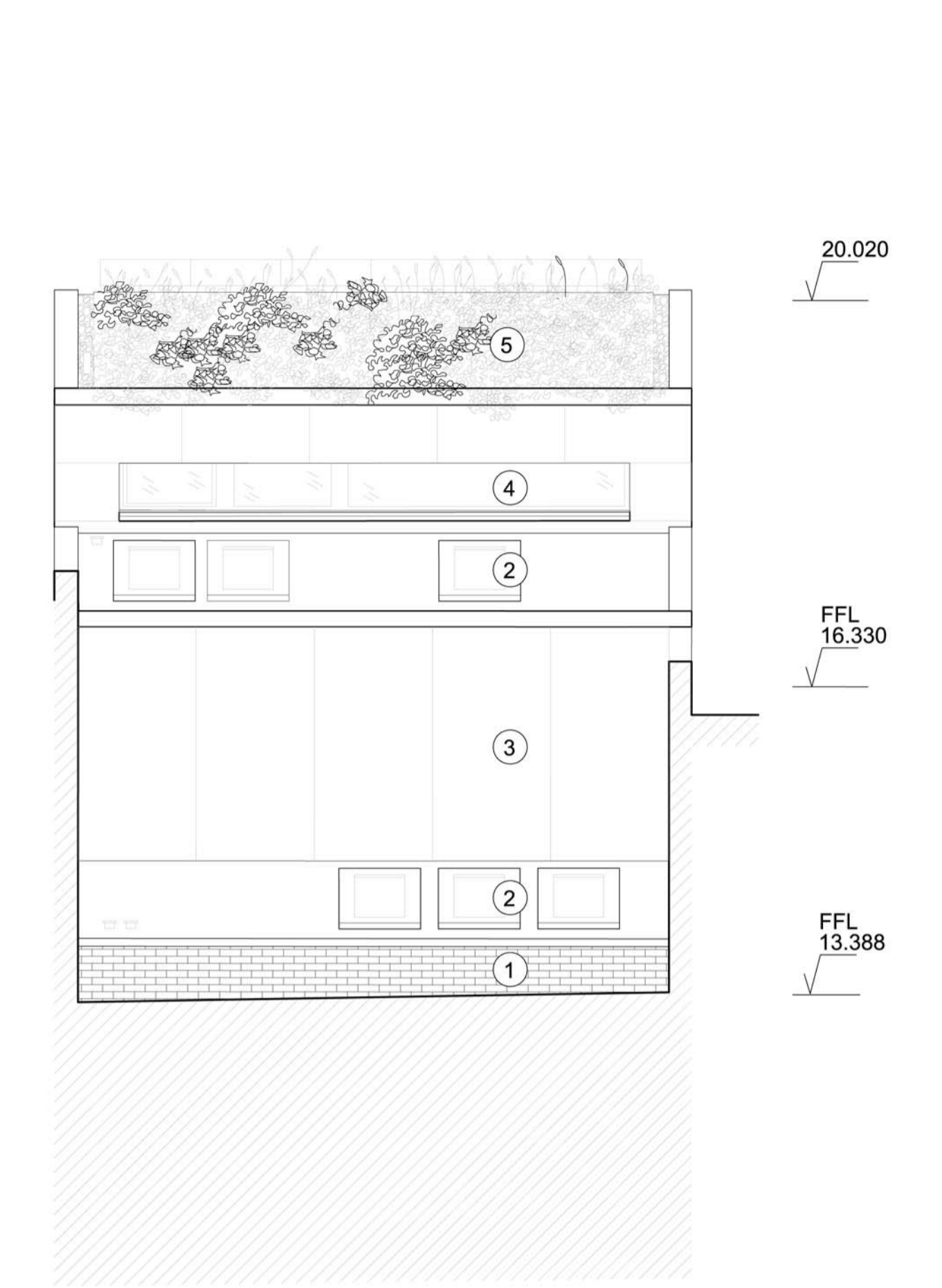
Street Elevation (West)
in context of existing situation



Front Elevation
in context of neighbouring proposed developments



Rear Elevation (East)
in context of existing situation



- 1 Existing rear parapet wall
- 2 Rooflights
- 3 Fibre cement cladding
- 4 Triple glazed Passivhaus windows
- 5 Meadow planting or sedum mix as appropriate.

- 1 Triple glazed Passivhaus windows
- 2 Photovoltaic panels
- 3 Brick façade.
- 4 Planting in planters for biodiversity.
- 5 Set back second floor
- 6 Stained timber door, bin store behind
- 7 Wire mesh screen, cycle store behind
- 8 Stained timber gate, Passivhaus entrance door behind
- 9 Stained timber panel



Rev	Description	Date	By	Chk
C	Floor Level Revision	15.10.12	CS	JB
D	Brickwork Amended on Line dwg	16.10.12	CS	JB
E	Rear Elevation Amended	16.10.12	LK	CS
F	All Elevations Amended	02.08.13	TB	JB
G	Revised to Current Plans	12.09.14	JC	JB
H	Brickwork updated	23.10.14	LW	---
I	Rear windows replace by rooflights 16.02.15	16.02.15	LW	---
J	Solar thermal replaced by extra PV's	12.05.15	LW	---
K	Front window divided	14.07.15	LW	---
L	Fibre cement cladding to rear	14.07.15	LW	---
M	Timber cladding to set back	20.11.15	LW	---

PROPOSED

Project: 25 King's Mews
Subject: Elevations
Scale: 1:50 @ A1
Date: 13.06.12

bere:architects
73 Poels Road, London, N5 2SH
T +44 (0) 20 7359 4503 F +44 (0) 20 7424 5572 bere@bere.co.uk
0398.B5.G20.E00 L