



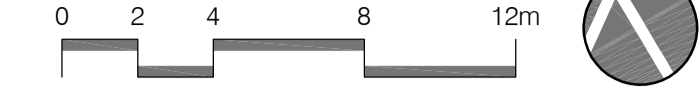
Ecology

- Schwegler bird nesting box with 32mm diam entrance hole fixed to trees & buildings by approved means, colour: brown
- Schwegler open fronted bird nesting box fixed to trees & buildings by approved means, colour: brown
- Log piles (deadwood habitat) in accordance with clause 3.19 of The Ecology Consultancy's Biodiversity Strategy January 2013

Legend

- Multi-stem trees
- Semi mature trees
- Existing trees
- Shrub & perennial planting
- Areas to be turfed
- Bulb drifts

Scale 1:200



Baseline Information

This drawing is based on Allies and Morrison drawing 809/00/90/110

Health & Safety Comments

No specific comments

General Notes

All trees, specimen shrubs & topiary items are to be inspected and approved by the landscape architect / contractor at the nursery of origin at least 2 months in advance of anticipated delivery to site.

Planting Notes

Responsibilities
The groundworks contractor is responsible for preparing the formation, digging the tree pits and topsoiling to BS3882:2015. The landscape contractor is responsible for planting, turfing, mulching and maintenance. The arboricultural contractor is responsible for any works specified to existing trees. Approval from the LPA must be granted before commencement.

Groundworks
Grass and planted areas are to be excavated to the depths specified below and arisings removed to a site tip, except within the root protection areas of trees to be retained. Any hardcore or builders rubble within the formation is to be completely removed and levels made up if required with site subsoil. Prior to topsoiling operations the formation is to be cultivated/tipped to a depth of 150mm to alleviate any compaction/poor drainage. Areas inaccessible for machines are to be forked over by hand.

Topsoiling
Turfed and seeded areas 150mm (25mm above adjacent hard surfaces & 150mm below DPC). Shrub areas 400mm (30mm below adjacent hard surfaces & 150mm below DPC). Topsoil to accord fully with BS3882:2015 and shall be a friable, free draining sandy loam. Topsoil to be supplied with a detailed certificate of analysis obtained from an approved horticultural testing laboratory before bulk delivery to site or before existing site topsoil is reused.

Cultivation of Turfed/Seeded Areas
For large areas of a professional hydraulic stone brier (such as a BLE-Covator) shall be used for preparation of seed/turf beds. The stone brier should be set to burying stones and other objects to a depth of 150 mm. For smaller areas to be seeded a pedestrian stone brier (such as the Canon Condor Stone Brier) can be used. Smaller turfed areas can be prepared by hand, bringing them to an even and fine tith 20mm deep, including the removal of all rubbish, roots and stones over 20mm in diameter.

Tree Pits
Multi-stemmed trees 3.5-4.0m tall - planting hole 1200mm x 1200mm x 800mm deep.
Trees 25-30cm girth - 1300mm x 1300mm x 800mm deep.
Trees 30-35cm girth - 1500mm x 1500mm x 1000mm deep.
Trees 40-45cm girth - 1.5 x the rootball diameter x 1000mm deep.
GreenBlue Urban's manual watering systems are to be incorporated within all tree pits as per the schedule below:
Trees 20-35cm girth & multi-stems - Root Rain Civic, code RRCVIC1.
Trees over 35cm girth - Root Rain Civic, code RRCVIC2.

Obtain further information from www.greenblueurban.com
Any waterlogged tree pits are to be positively drained before planting and treated to avoid future waterlogging.
The top 400mm of the tree pit only is to be back filled with approved topsoil to BS3882:2015. The base of the tree pit is to be thoroughly broken up to a minimum depth of 300mm & approved clean/friable subsoil to BS3601:2013 used to bring up levels to receive topsoil.

Trees and Shrubs
Trees are to be supplied by Deepdale Trees in airports or rootballs during the dormant season. www.deepdale-trees.co.uk
Specimen plants are to be supplied by Deepdale Trees or Europlants. www.deepdale-trees.co.uk
www.europlants.net
Preformed hedges are to be supplied by Readyhedge. www.readyhedge.co.uk
Shrubs and perennial plants are to be supplied in containers by Robin Tacchi Plants. www.robin-tacchi-plants.com

Planting
All planted areas are to be mulched with 50mm of Melcourt 'Ornamental Bark Mulch'. www.melcourt.co.uk
Rolawn 'Minster Pro' is to be used to Block K1 garden areas.
Rowland 'Medallion' or equal approved is to be used for other turfed areas. www.rolawn.co.uk
All hedging is to be supplied preformed/container grown from the named supplier/suppliers.

Rev A 24.11.15 Bird boxes & log piles added

Revisions

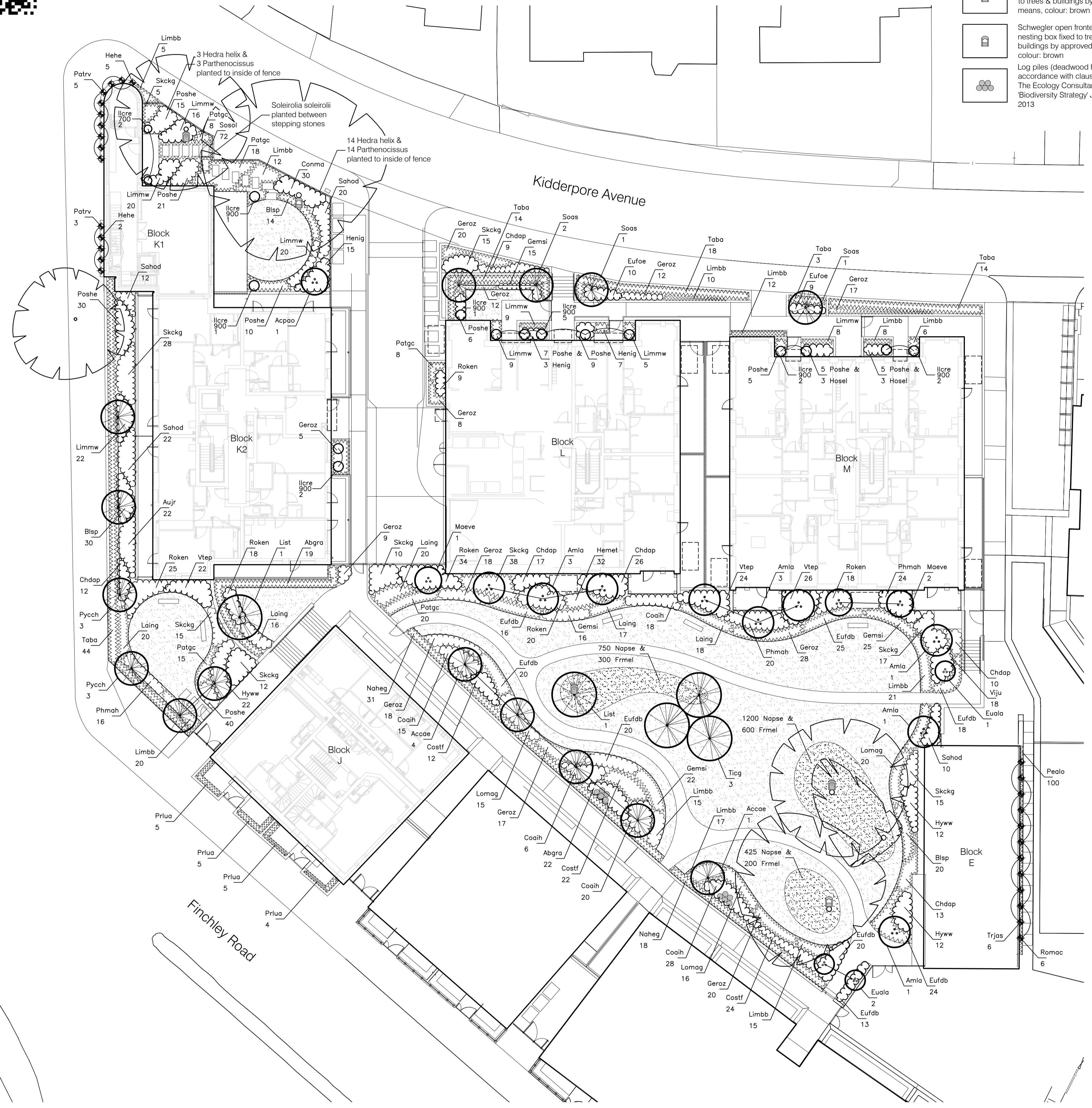
Murdoch Wickham
Landscape Architecture & Masterplanning
The Tithe Barn, Bradbourne House, East Malling, Kent, ME19 6DZ
T: 01732 752780, F: 01732 752796, mail@murdochwickham.com, www.murdochwickham.com

Job Title: **Kidderpore Avenue**
Client: **Barratt London**

Drawing Title: **Phase 2 Planting Plan**

Date: **19 November 2015**
Scale: **1:200 @ A1**
Drawn: **NC**

Drawing no. **1386/008** Rev. **A**



Planting Schedule

Trees & Multi-Stems - are to be supplied in air-pots/containers or can be rootballed if planted in winter

Code Name	Scientific Name	Quantity	Size
Accae	Acer campestre 'Elsrijk'	5	30-35cm girth
Amla	Amelanchier lamarkii (multi-stem umbrella)	9	3.5-4.0m high
List	Liquidambar styraciflua	2	40-45cm girth
Maeve	Malus 'Evereste' (multi-stem umbrella)	3	3.0-3.5m high
Pycch	Pyrus calleryana 'Chanticleer'	6	25-30cm girth
Soas	Sorbus aucuparia 'Sheerwater Seedling'	4	25-30cm girth
Ticg	Tilia cordata 'Green Spire'	3	40-45cm girth

Specimen Plants - are to be supplied in air-pots/containers or can be rootballed if planted in winter

Code Name	Scientific Name	Quantity	Size
Acpsa	Acer palmatum 'Osakazuki' (multi-stem)	1	1.8-2.0m high
Euala	Euonymus alatus (multi-stem)	3	1.5-2.0m high
Ilcre	Ilex crenata (clipped ball)	2	700mm dia
Ilcre	Ilex crenata (clipped ball)	14	900mm dia

Shrubs & Perennial Plants - are to be supplied container grown (unless specified). (D) = diameter

Code Name	Scientific Name	Quantity	Size
Abgra	Abelia x grandiflora	22	5L, 40-60cm
Aujr	Aucuba japonica 'Rozannie'	22	5L, 40-60cm
Blsp	Blechnum spicant	64	2L
Chdap	Choisy x dewitteana 'Aztec Pearl'	87	5L, 40-60cm
Coaih	Cornus alba 'Ivory Halo' (min 5 breaks)	87	5L, 40-60cm
Conma	Convallaria majalis	30	P9
Costf	Cornus stolonifera 'Flaviramea' (min 5 breaks)	58	5L, 60-80cm
Eufdb	Euonymus fortunei 'Dart's Blanket'	156	5L, 30-40cm (D)
Eufoe	Euonymus fortunei 'Emerald Gaiety'	19	3L, 20-30cm (D)
Gemsi	Geranium 'Mavis Simpson'	78	2L
Geroz	Geranium 'Rozanne'	184	2L
Hehe	Hedera helix (on frame)	24	5L, 90-120cm
Hemet	Hebe 'Mette'	32	5L
Henig	Helleborus niger	25	5L
Hosel	Hosta sieboldiana 'Elegans'	6	
Hyww	Hydrangea 'White Wave'	46	10L, 50-60cm
Laing	Lavandula x intermedia 'Grosso'	91	3L, 15-20cm
Limbb	Liriope muscari 'Big Blue'	141	5L
Limmw	Liriope muscari 'Monroe White'	109	5L
Lomag	Lonicera 'May Green'	51	3L, 30-40cm (D)
Patgc	Pachysandra terminalis 'Green Carpet'	69	2L, 20+cm (D)
Patrv	Parthenocissus tricuspidata 'Veitchii'	25	5L, 90-120cm
Pealo	Pennisetum alopecuroides	100	3L
Phmah	Philadelphus 'Manteau d'Hermine'	60	5L, 40-50cm
Poshe	Polystichum setiferum 'Herrenhausen'	153	2L
Roken	Rosa 'Kent'	124	3L, 40-60cm
Romac	Rosa 'Madame Alfred Carrière'	6	10L, 1.75-2.0m
Sahod	Sarcococca hookeriana var 'Digyna'	64	5L, 30-40cm
Skckg	Skimmia x confusa 'Kew Green'	155	5L, 40-60cm
Sosol	Soleirolia soleirolia	72	7cm pot
Trjas	Trachelospermum jasminoides	6	25L, 3.0-3.5m
Viju	Viburnum x juddii	18	5L, 40-60cm
Vtep	Viburnum tinus 'Eve Price'	72	5L, 45-60cm

Instant Hedging - all hedging is to be supplied in 1m long troughs

Code Name	Scientific Name	Quantity	Size
Abgra	Abelia x grandiflora (pre-shaped)	19	60-70cm high
Naheg	Mixed native hedge (pre-shaped)	49	1.0m high
Prlua	Prunus lusitanica 'Angustifolia' (pre-shaped)	19	1.0m high
Taba	Taxus baccata (pre-shaped)	93	1.0m high

Bulbs - to be planted within grassed areas in autumn

Code Name	Scientific Name	Quantity
Frmel	Fritillaria meleagris	1100
Napse	Narcissus pseudonarcissus	2375