

COPYRIGHT IN THIS DRAWING IS THE PROPERTY OF PETER DEER AND ASSOCIATES. IT MUST NOT BE REPRODUCED NOR AMENDED NOR USED FOR THE EXECUTION OF ANY WORKS WHETHER IN CONNECTION WITH THE PROPOSED WORKS FOR WHICH IT IS PREPARED OR OTHERWISE WITHOUT THE EXPRESS CONSENT IN WRITING OF PETER DEER AND ASSOCIATES.



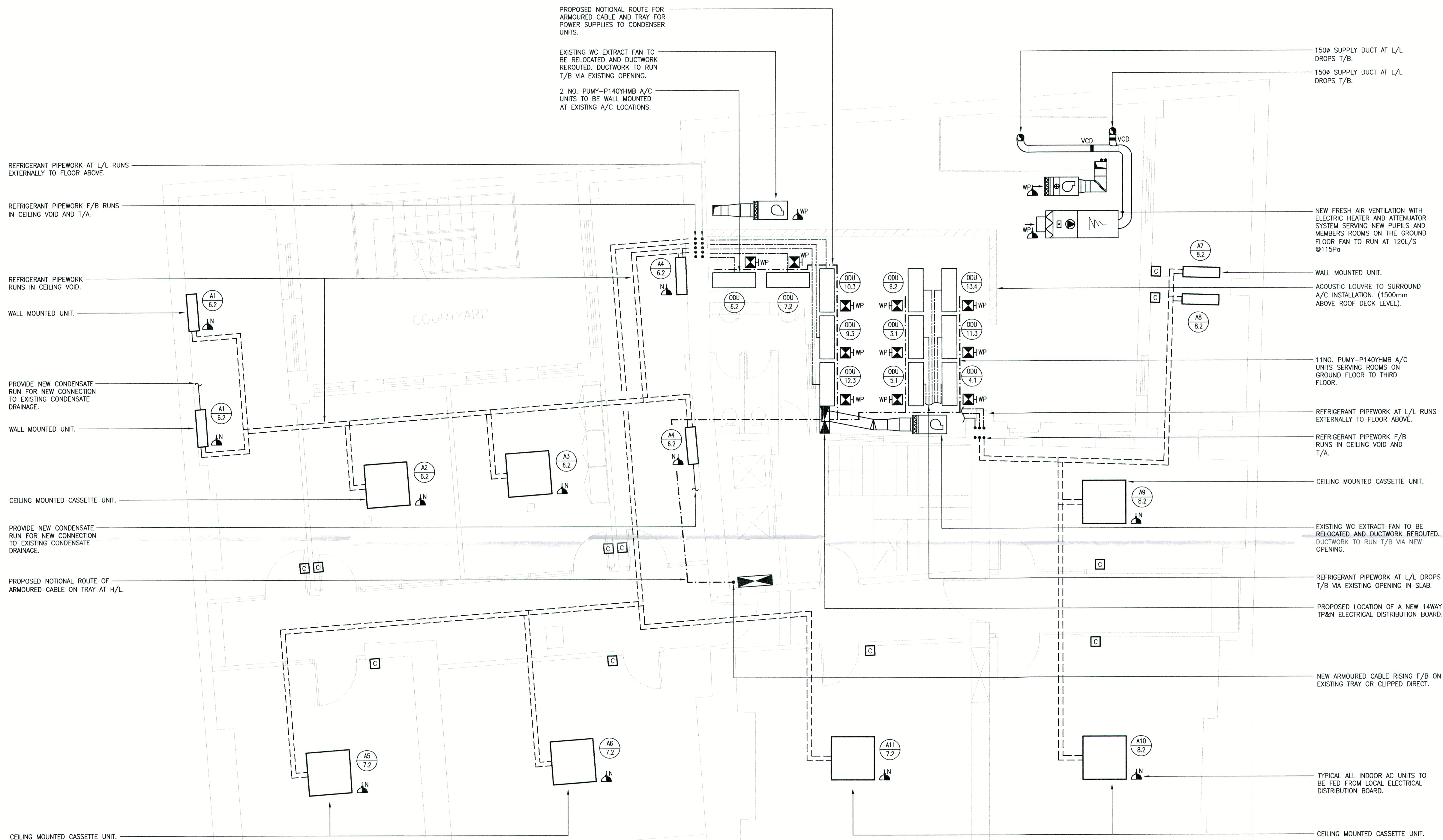
DO NOT SCALE FROM THIS DRAWING.
ALL DIMENSIONS TO BE CHECKED ON SITE.

NOTES:

1. INFORMATION CONTAINED IN DRAWING IS FOR TENDER PURPOSES ONLY.
2. ALL INSTALLATION ISSUE DRAWINGS SHALL BE PREPARED AND SUBMITTED BY THE CONTRACTOR PRIOR TO SITE INSTALLATION. FOR APPROVAL BY THE DESIGN TEAM.
3. CONTRACTOR TO ENSURE FULL CO-ORDINATION WITH MECHANICAL & ELECTRICAL SERVICES.
4. EXISTING CONDENSATE RUNS TO BE REUSED UNLESS INDICATED ON DRAWINGS AND SPECIFICATION.
5. EXISTING ELECTRICAL SUPPLIES TO BE REUSED UNLESS INDICATED ON DRAWINGS AND SPECIFICATION.
6. EXISTING OPENING SERVING REDUNDANT PIPEWORK TO BE FILLED IN AND MADE GOOD.

LEGEND:

- A/C UNIT
- WALL MOUNTED CONTROLLER
- VOLUME CONTROL DAMPER
- UNIT/ODU REF
- DENOTES OUTDOOR UNIT
- FUSED CONNECTION UNIT WITH NEON INDICATOR
- WEATHERPROOF FUSED CONNECTION UNIT
- WEATHERPROOF TP&N ISOLATOR
- TP&N ELECTRICAL DISTRIBUTION BOARD



FIRST FLOOR

T TENDER ISSUE 07/05/13

Rev Description Date

Peter Deer and Associates

Building Services ■ Consulting Engineers
South Point House
321 Chose Road
Southgate
London N14 6JT
Tel: 020 3232 0080
Fax: 020 3232 0090
www.peterdeer.co.uk

Client

DANIEL WATNEY LLP

Project

TANFIELD CHAMBERS

Title
**FIRST FLOOR
MECHANICAL AND ELECTRICAL
SERVICES LAYOUT**

Date MAY 2013 Scale 1:50 Sheet Size A1

Drawn GT Checked DS Approved MH

Drawing No. 3558/M/203 Rev T