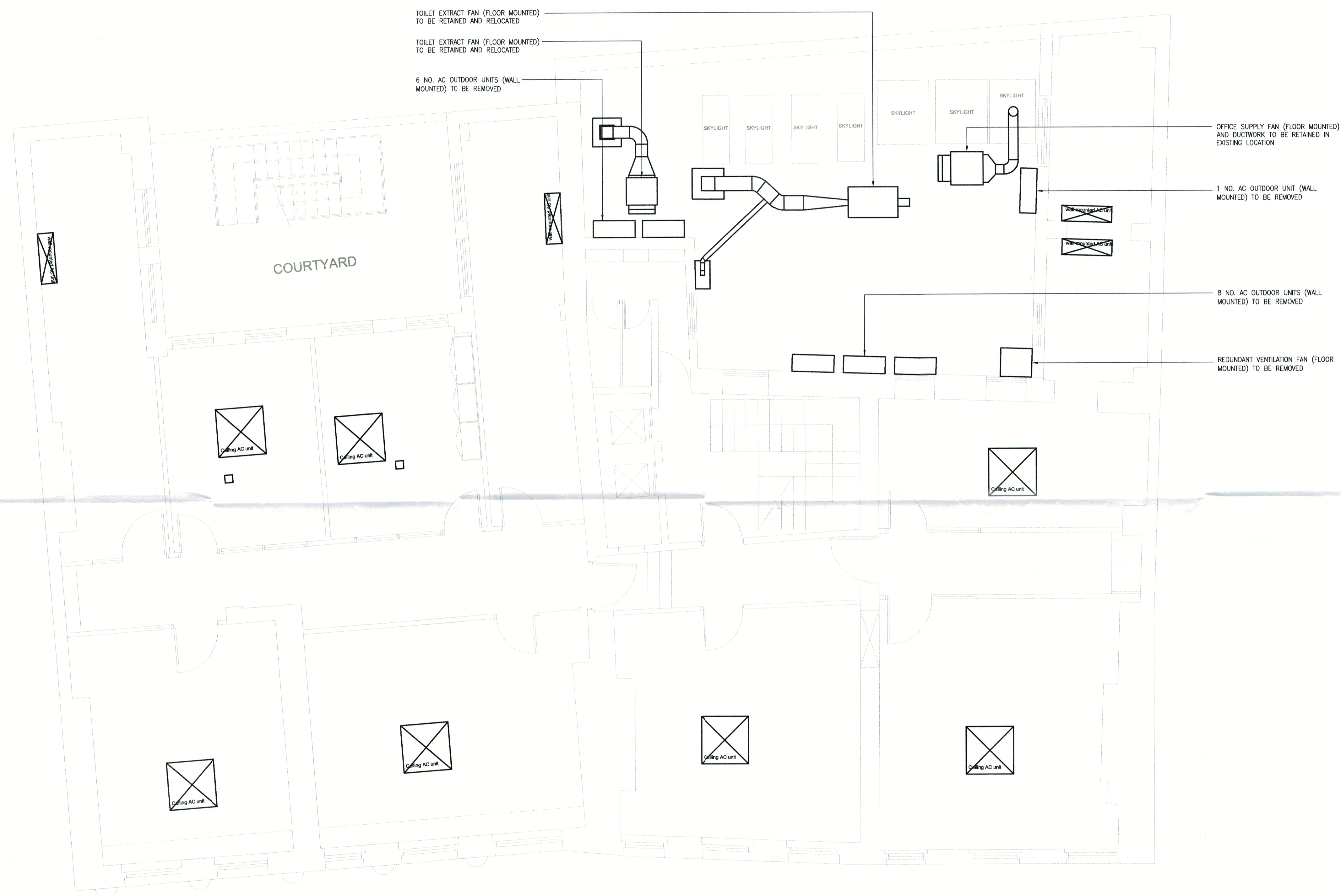


**NOTES:**

1. INFORMATION CONTAINED IN DRAWING IS FOR TENDER PURPOSES ONLY.
2. ALL INSTALLATION ISSUE DRAWINGS SHALL BE PREPARED AND SUBMITTED BY THE CONTRACTOR PRIOR TO SITE INSTALLATION. FOR APPROVAL BY THE DESIGN TEAM.
3. CONTRACTOR TO ENSURE FULL CO-ORDINATION WITH MECHANICAL & ELECTRICAL SERVICES.
4. EXISTING CONDENSATE RUNS TO BE REUSED UNLESS INDICATED ON DRAWINGS AND SPECIFICATION.
5. EXISTING ELECTRICAL SUPPLIES TO BE REUSED UNLESS INDICATED ON DRAWINGS AND SPECIFICATION.
6. EXISTING OPENING SERVING REDUNDANT PIPEWORK TO BE FILLED IN AND MADE GOOD.



FIRST FLOOR

Rev	Description	Date
SK	FOR PLANNING	31/05/13

**Peter Deer and Associates**  
Building Services ■ Consulting Engineers

South Point House  
321 Chase Road  
Southgate  
London N14 6JT  
Tel: 020 3232 0080  
Fax: 020 3232 0090  
www.peterdeer.co.uk

Client

DANIEL WATNEY LLP

Project

TANFIELD CHAMBERS

Title  
FIRST FLOOR  
EXISTING SERVICES LAYOUT  
(FOR PLANNING)

Date MAY 2013 Scale 1:50 Sheet Size A1

Drawn DS Checked DS Approved MH

Drawing No. 3558-SK130531DS Rev SK