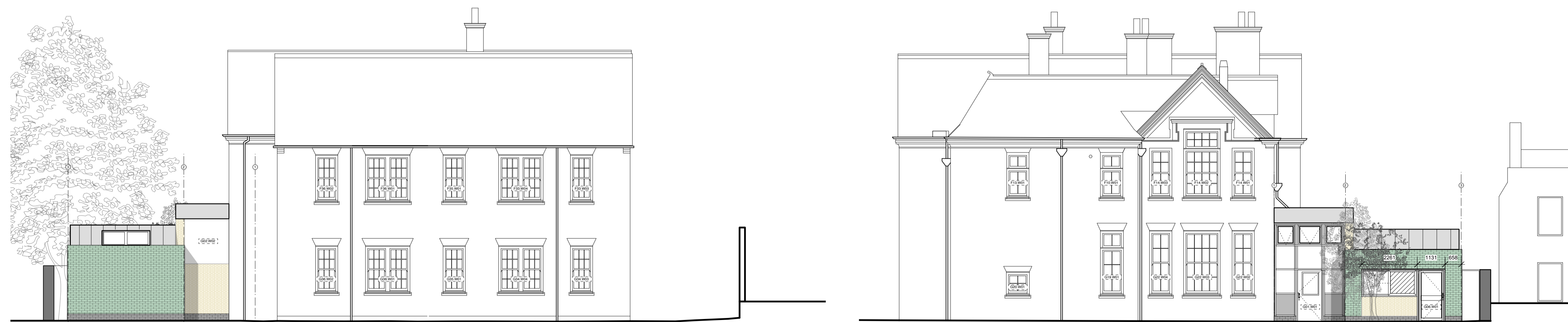




01 South Elevation



02 North Elevation



03 East Elevation

CHECK THIS DRAWING IS THE LATEST REVISION
 THIS DRAWING SHOULD BE READ IN CONJUNCTION WITH ALL RELEVANT DRAWINGS, SPECIFICATIONS, SCHEDULES AND OTHER CONTRACT INFORMATION ISSUED BY THE ARCHITECT, STRUCTURAL ENGINEER, SERVICES ENGINEER AND ANY OTHER CONSULTANT EMPLOYED OR RETAINED BY THE EMPLOYER IN RESPECT OF THESE WORKS.
 ALL DIMENSIONS SHOWN ARE TO THE FACE OF MASONRY, METAL OR TIMBER STUD FRAMING, OR THE CENTRE LINE OF STRUCTURAL OR TIMBER MEMBERS STEEL MEMBERS, UNLESS NOTED OTHERWISE.
 DO NOT SCALE FROM THIS DRAWING.
 REPORT ANY DISCREPANCIES, CONFLICTS, ERRORS OR OMISSIONS TO THE CA AND SEEK DIRECTIONS BEFORE PROCEEDING.
 CONFIRM ALL DIMENSIONS AND LEVELS ON SITE PRIOR TO COMMENCING WORK. IF IN DOUBT ASK!
 DO NOT USE ANY AREAS INDICATED FOR EITHER VALUATION, PURCHASE SALE OR ANY OTHER FORM OF LEGALLY BINDING CONTRACT.
 DO NOT REPRODUCE ANY PART OF THIS DRAWING WITHOUT PRIOR WRITTEN CONSENT. THIS DRAWING REMAINS THE COPYRIGHT OF ARCHITYPE LTD.

Elements shown in red are the subject of this application

Revisions

Status	PLANNING	
	ARCHITYPE	
	<small>The Morocco Store, 18 Leathermarket Street, London SE1 3JA T 020 7403 2889 F 020 7407 5283 e london@archtype.co.uk www.archtype.co.uk</small>	
Project	CCFL - CHALCOT SCHOOL	
Client	CAMDEN COUNCIL	
Dwg Title	PROPOSED ELEVATIONS	
Dwg No.	7140 CH GA650-2	Revision
Scales	1:100@A1, 1:200@A3	Date
Drawn by	JT	Checked by
		IH