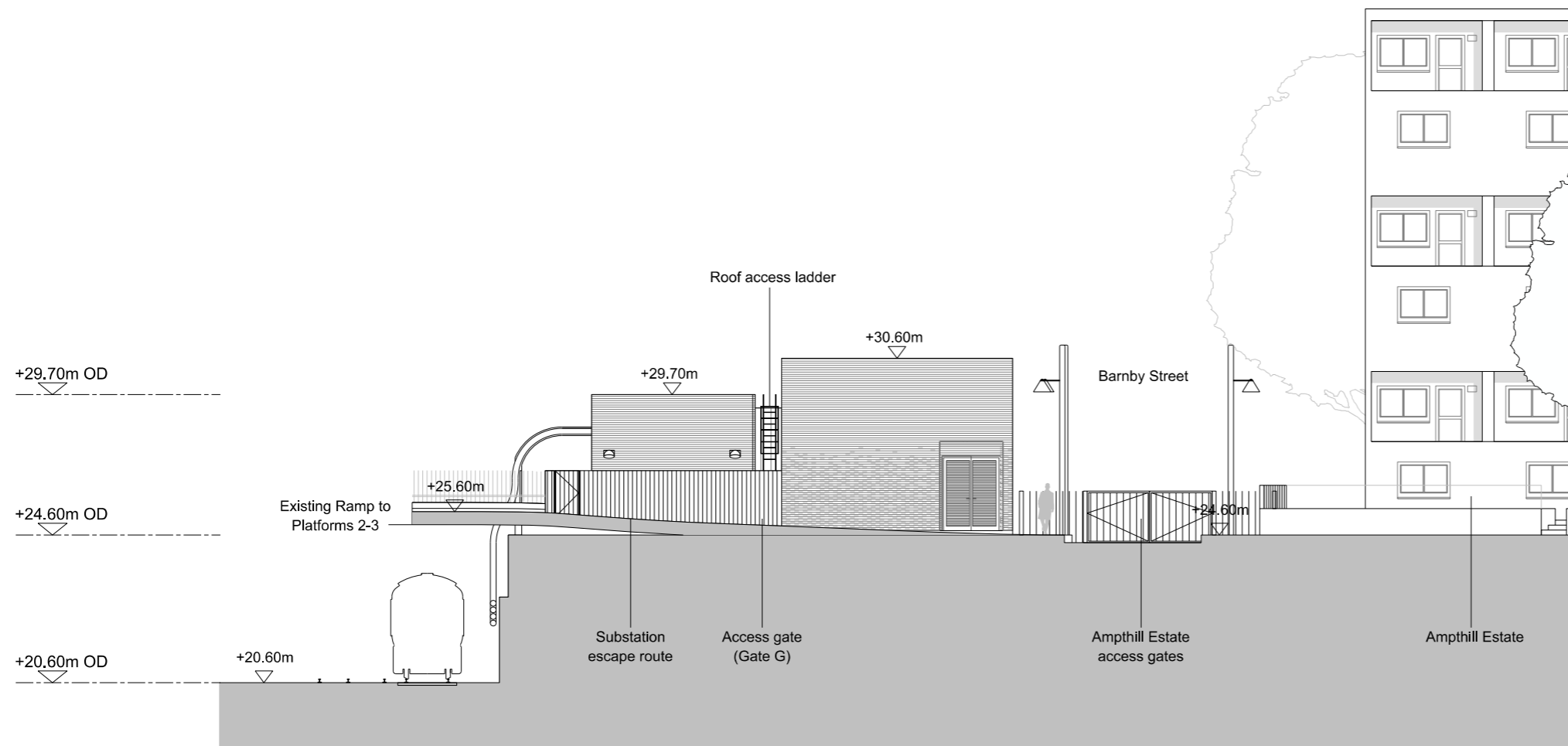


Proposed Elevation 1-1



Proposed Elevation 2-2

PLANNING

Legend/Notes
 General Notes:
 1 - All drawings have been compiled using the latest available survey information and are correct to the best of the designers knowledge.
 2 - All designs are based on site boundaries as agreed with Network Rail.
 3 - All doors are louvred in accordance with plant ventilation requirements.
 References:
 Euston Substation - Lighting Assessment Report Reference No E100-ARP-REP-EG-000006 for details of the external lighting within the compound.
 Euston Substation - Noise and Vibration Assessment Reference No E100-ARP-ASS-EG-000001 for details of associated contributing plant and equipment within the compound.
 Euston Substation - Design and Access Statement Reference No E100-ARP-REP-AR-000003 rev 01.
 Materials samples board Reference No E100-ARP-DRG-000012.
 This drawing is the property of Network Rail. It shall not be reproduced in whole or in part, nor disclosed to a third party, without the written permission of the Programme Director, On Network Works, 1 Eversholt Street, London, NW1 2DN.
 Tel: 020 7904 7185

Copyright 2015 Network Rail.

| Rev | Date | Description of Revisions | Drawn | Chkd | Appr |
|-----|------|--------------------------|-------|------|------|
| | | | | | |
| | | | | | |
| | | | | | |

On Network Works
 1 Eversholt Street
 London
 NW1 2DN
 Tel: 020 7904 7185

Contractor(s)

Ove Arup & Partners International Ltd.
 13 Fitzroy Street
 London
 W1T 4BQ
 www.arup.com

Project
 Network Rail Intake Substation

Drawing Title
 Proposed Elevations 1 and 2
 E100-ARP-DRG-AR-000008
 1:200 @ A3

| | | | | |
|----------|----|--------|------|----------|
| Designed | SK | Signed | Date | 13.11.15 |
| Drawn | CH | Signed | Date | 13.11.15 |
| Checked | SC | Signed | Date | 13.11.15 |
| Approved | CR | Signed | Date | 13.11.15 |

| | | | |
|-----------------------|------------------------|---------------|--------|
| Scale(s) | 1:200 @ A3 | ELR & Mileage | |
| Alternative Reference | | Sheet | 1 of 1 |
| Drawing Number | E100-ARP-DRG-AR-000008 | Revision | - |