

*Super Digital Inverter
4series 2-3HP*

*Engineering
Data Book*

Outdoor unit

RAV-SP564AT-E,
RAV-SP564ATZ-E,
RAV-SP564ATZG-E,
RAV-SP804AT-E,
RAV-SP804ATZ-E,
RAV-SP804ATZG-E







Contents

1. Line up
2. Specifications
3. Pipe capacity correction
4. Dimension
5. Wireing diagram
6. Sensible capacity table
7. Part load performance
8. NC curve

1-1. Single Sprit System Line up

Type		HP	2	3
		Outdoor unit		
		Model name	RAV-SP564AT-E, RAV-SP564ATZ-E, RAV-SP564ATZG-E	RAV-SP804AT-E, RAV-SP804ATZ-E, RAV-SP804ATZG-E
4-way cassette Type		RAV-SM564UT-E	●	-
		RAV-SM804UT-E	-	●
Duct Type		RAV-SM562BT-E	●	-
		RAV-SM802BT-E	-	●
Ceiling Type		RAV-SM562CT-E	●	-
		RAV-SM802CT-E	-	●
High-Wall Type		RAV-SM562KRT-E	●	-
		RAV-SM802KRT-E	-	●
Compact 4-way		RAV-SM562MUT-E	●	-
Slim Duct Type		RAV-SM564SDT-E	●	-

1-2. Twin Split System Line up

Type	HP	2	3
	Outdoor unit		
	Model name	RAV-SP564AT-E, RAV-SP564ATZ-E, RAV-SP564ATZG-E	RAV-SP804AT-E, RAV-SP804ATZ-E, RAV-SP804ATZG-E
<p>Compact 4-way cassette Type</p> 	RAV-SM402MUT-E × 2	-	●
<p>Slim duct Type</p> 	RAV-SM404SDT-E × 2	-	●

2. Specifications

Model			4-way casstte type		Duct type			
			Indoor unit	RAV-SM564UT-E	RAV-SM804UT-E	RAV-SM562BT-E	RAV-SM802BT-E	
Outdoor unit			RAV-SP564AT-E, RAV-SP564ATZ-E, RAV-SP564ATZG-E	RAV-SP804AT-E, RAV-SP804ATZ-E, RAV-SP804ATZG-E	RAV-SP564AT-E, RAV-SP564ATZ-E, RAV-SP564ATZG-E	RAV-SP804AT-E, RAV-SP804ATZ-E, RAV-SP804ATZG-E		
Cooling capacity (min. - max.)			(kW)	5.3 (1.2 - 5.6)	7.1 (1.9 - 8.0)	5.0 (1.2 - 5.6)	7.1 (1.9 - 8.0)	
Heating capacity (min. - max.)			(kW)	5.6 (0.9 - 8.1)	8.0 (1.3 - 11.3)	5.6 (0.9 - 7.4)	8.0 (1.3 - 10.6)	
Power supply				1 phase 230V (220-240V) 50Hz		1 phase 230V (220-240V) 50Hz		
Electrical characteristics	Cooling	Running current	(A)	6.82 - 6.25	8.72 - 7.99	7.24 - 6.63	10.36 - 9.49	
		Power input (min. - max.)	(kW)	1.47 (0.20 - 1.95)	1.86 (0.30 - 2.52)	1.56 (0.21 - 2.05)	2.21 (0.30 - 2.88)	
		Power factor	(%)	98	97	98	97	
		EER		3.61	3.82	3.21	3.21	
		Energy efficiency class *		A	A	A	A	
	Heating	Running current	(A)	5.61 - 5.14	8.95 - 8.20	7.19 - 6.59	10.36 - 9.49	
		Power input (min. - max.)	(kW)	1.21 (0.15 - 2.40)	1.91 (0.25 - 3.52)	1.55 (0.17 - 2.51)	2.21 (0.27 - 3.50)	
		Power factor	(%)	98	97	98	97	
		COP		4.63	4.19	3.61	3.62	
		Energy efficiency class *		A	A	A	A	
Maximum current		(A)	13.3	20.3	13.6	20.6		
Appearance		Main unit		Zinc hot dipping steel plate		Zinc hot dipping steel plate		
		Ceiling panel	Model	RBC-U31PG(W)-E / RBC-U31PG(WS)-E, RBC-U31PGS(W)-E / RBC-U31PGS(WS)-E		-		
		(Sold separately)	Panel color	(W) : 2.5GY9.0/0.5 (WS) : 2.5GY9.0/, 8B3/0.3		-		
Outer dimension		Main unit	Height	(mm)	256	256	320	320
			Width	(mm)	840	840	700	1000
			Depth	(mm)	840	840	800	800
		Ceiling panel (Sold separately)	Height	(mm)	30	30	-	-
			Width	(mm)	950	950	-	-
			Depth	(mm)	950	950	-	-
Total weight		Main unit		(kg)	20	20	30	39
		Ceiling panel (Sold separately)		(kg)	4.2	4.2	-	-
Heat exchanger			Finned tube		Finned tube			
Fan unit		Fan		turbo fan	turbo fan	Centrifugal	Centrifugal	
		Standard air flow	H/M/L (m3/h)	1050 / 870 / 780	1230 / 960 / 810	780 / 714 / 588	1140 / 972 / 798	
		Motor		(W)	14	20	120	120
Air filter			Attached on panel		Attached on panel			
Controller (Sold Separately)			RBC-AMT32E, AMS41E, AS21E2, AX31U (W)-E, AX31U (WS)-E, TCB-AX21E2		RBC-AMT32E, AMS41E, AS21E2, TCB-EXS21TLE, AX21E2			
Sound pressure level		H/M/L (dB·A)	32 / 29 / 28	35 / 31 / 28	40 / 37 / 33	40 / 37 / 34		
Sound power level		H/M/L (dB·A)	47 / 44 / 43	50 / 46 / 43	55 / 52 / 48	55 / 52 / 49		
Connecting pipe		Gas side		(mm)	12.7	15.9	12.7	15.9
		Liquid side		(mm)	6.4	9.5	6.4	9.5
		Drain port		(mm)	VP25		VP25	

*IEC standard

2. Specifications

Model			Ceiling type		High wall type		
			Indoor unit	RAV-SM562CT-E	RAV-SM802CT-E	RAV-SM562KRT-E	RAV-SM802KRT-E
Outdoor unit			RAV-SP564AT-E, RAV-SP564ATZ-E, RAV-SP564ATZG-E	RAV-SP804AT-E, RAV-SP804ATZ-E, RAV-SP804ATZG-E	RAV-SP564AT-E, RAV-SP564ATZ-E, RAV-SP564ATZG-E	RAV-SP804AT-E, RAV-SP804ATZ-E, RAV-SP804ATZG-E	
Cooling capacity (min. - max.)			(kW)	5.0 (1.2 - 5.6)	7.1 (1.9 - 8.0)	5.0 (1.2 - 5.6)	6.9 (1.9 - 8.0)
Heating capacity (min. - max.)			(kW)	5.6 (0.9 - 7.4)	8.0 (1.3 - 10.6)	5.6 (0.9 - 7.3)	8.0 (1.3 - 10.6)
Power supply				1 phase 230V (220-240V) 50Hz		1 phase 230V (220-240V) 50Hz	
Electrical characteristics	Cooling	Running current	(A)	7.24 - 6.63	10.36 - 9.49	7.24 - 6.63	11.25 - 10.31
		Power input (min. - max.)	(kW)	1.56 (0.21 - 2.26)	2.21 (0.30 - 2.88)	1.56 (0.21 - 2.05)	2.4 (0.30 - 2.88)
		Power factor	(%)	98	97	98	97
		EER	(W/W)	3.21	3.21	3.21	2.88
		Energy efficiency class *		A	A	A	C
	Heating	Running current	(A)	6.82 - 6.25	10.12 - 9.28	7.19 - 6.59	11.25 - 10.31
		Power input (min. - max.)	(kW)	1.47 (0.17 - 2.34)	2.16 (0.27 - 3.50)	1.55 (0.17 - 2.57)	2.40 (0.27 - 3.87)
		Power factor	(%)	98	97	98	97
		COP	(W/W)	3.81	3.70	3.61	3.33
		Energy efficiency class *		A	A	A	C
Maximum current		(A)	13.5	20.5	13.4	20.4	
Appearance	Main unit		Shine white		Pure white		
Outer dimension	Main unit	Height	(mm)	210	210	298	298
		Width	(mm)	910	1180	998	998
		Depth	(mm)	680	680	221	221
Total weight	Main unit		(kg)	21	25	12	12
Heat exchanger			Finned tube		Finned tube		
Fan unit	Fan			Centrifugal	Centrifugal	Cross flow fan	Cross flow fan
	Standard air flow	H/M/L	(m3/h)	780 / 672 / 600	1110 / 1002 / 876	840 / 750 / 642	1110 / 876 / 732
	Motor		(W)	60	60	30	30
Air filter			Attached main unit		Attached main unit		
Controller (Sold Separately)			RBC-AMT32E, AMS41E, AS21E2, AX21CE2, TCB-EXS21TLE		RBC-AMT32E, AMS41E, AS21E2, TCB-EXS21TLE, AX21E2(FCU comes with WH-H2UE)		
Sound pressure level		H/M/L	(dB·A)	36 / 33 / 30	38 / 36 / 33	39 / 36 / 33	45 / 41 / 36
Sound power level		H/M/L	(dB·A)	51 / 48 / 45	53 / 51 / 48	54 / 51 / 48	60 / 56 / 51
Connecting pipe	Gas side	(mm)	12.7	15.9	12.7	15.9	
	Liquid side	(mm)	6.4	9.5	6.4	9.5	
	Drain port	(mm)	VP20		VP16		

*IEC standard

2. Specifications

Model			Compact 4-way type	Slim Duct type	
Indoor unit			RAV-SM562MUT-E	RAV-SM564SDT-E	
Outdoor unit			RAV-SP564AT-E, RAV-SP564ATZ-E, RAV-SP564ATZG-E	RAV-SP564AT-E, RAV-SP564ATZ-E, RAV-SP564ATZG-E	
Cooling capacity (min. - max.)		(kW)	5.0 (1.2 - 5.6)	5.0 (1.2 - 5.6)	
Heating capacity (min. - max.)		(kW)	5.6 (0.9 - 7.4)	5.6 (0.9 - 7.4)	
Power supply			1 phase 230V (220-240V) 50Hz	1 phase 230V (220-240V) 50Hz	
Electrical characteristics	Cooling	Running current	(A)	7.24 - 6.63	7.24 - 6.63
		Power input (min. - max.)	(kW)	1.56 (0.21 - 2.29)	1.56 (0.21 - 2.29)
		Power factor	(%)	98	98
		EER		3.21	3.21
		Energy efficiency class *		A	A
	Heating	Running current	(A)	7.14 - 6.55	6.68 - 6.12
		Power input (min. - max.)	(kW)	1.54 (0.17 - 2.37)	1.44 (0.17 - 2.37)
		Power factor	(%)	98	98
		COP		3.64	3.89
		Energy efficiency class *		A	A
Maximum current		(A)	13.6	13.6	
Appearance	Main unit		Zinc hot dipping steel plate	Zinc hot dipping steel plate	
	Ceiling panel (Sold separately)	Model	RBC-UM11PG(W)-E	-	
		Panel color	Moon-white(Muncel 2.5GY 9.0/0.5)	-	
Outer dimension	Main unit	Height	(mm)	268	210
		Width	(mm)	575	845
		Depth	(mm)	575	645
	Ceiling panel (Sold separately)	Height	(mm)	27	-
		Width	(mm)	700	-
		Depth	(mm)	700	-
Total weight	Main unit		(kg)	17	22
	Ceiling panel(Sold separately)		(kg)	3	-
Heat exchanger			Finned tube	Finned tube	
Fan unit	Fan		Turbo fan	Centrifugal	
	Standard air flow	H/M/L	(m3/h)	798 / 672 / 546	780 / 678 / 582
	Motor		(W)	60	60
Air filter			Attached on panel	Attached main unit	
Controller (Sold Separately)			RBC-AMT32E, AMS41E, AS21E2, TCB-EXS21TLE, AX21E2	RBC-AMT32E, AMS41E, AS21E2, TCB-EXS21TLE, AX21E2	
Sound pressure level		H/M/L	(dB·A)	43 / 39 / 34	-
Undar air inlet		H/M/L	(dB·A)	-	45 / 40 / 36
Back air inlet		H/M/L	(dB·A)	-	33 / 31 / 28
Sound power level		H/M/L	(dB·A)	58 / 54 / 49	-
Undar air inlet		H/M/L	(dB·A)	-	60 / 55 / 51
Back air inlet		H/M/L	(dB·A)	-	48 / 46 / 43
Connecting pipe	Gas side		(mm)	12.7	12.7
	Liquid side		(mm)	6.4	6.4
	Drain port		(mm)	VP25	VP25

2. Specifications

Model			Compact 4-way type (Twin use)	Slim duct type (Twin use)
Indoor unit 1			RAV-SM402MUT-E	RAV-SM404SDT-E
Indoor unit 2			RAV-SM402MUT-E	RAV-SM404SDT-E
Outdoor unit			RAV-SP804AT-E, RAV-SP804ATZ-E, RAV-SP804ATZG-E	RAV-SP804AT-E, RAV-SP804ATZ-E, RAV-SP804ATZG-E
Cooling capacity (min. - max.) (kW)			7.1 (1.9 - 8.0)	7.1 (1.9 - 8.0)
Heating capacity (min. - max.) (kW)			8.0 (1.3 - 10.6)	8.0 (1.3 - 10.6)
Indoor unit				
Power supply			1 phase 230V (220-240V) 50Hz	1 phase 230V (220-240V) 50Hz
Electrical characteristics	Cooling	Running current (A)	10.36 - 9.49	10.36 - 9.49
		Power input (min. - max.) (kW)	2.21 (0.30 - 2.91)	2.21 (0.30 - 2.91)
		Power factor (%)	97	97
		EER	3.21	3.21
		Energy efficiency class *	A	A
	Heating	Running current (A)	10.12 - 9.28	10.12 - 9.28
		Power input (min. - max.) (kW)	2.16 (0.27 - 3.57)	2.16 (0.27 - 3.57)
		Power factor (%)	97	97
		COP	3.70	3.70
		Energy efficiency class *	A	A
Fan unit		Fan	Turbo fan	Centrifugal
	Standard air flow	H/M/L (m3/h)	660 / 552 / 468	690 / 600 / 522
	Motor	(W)	60	60
Sound pressure level		H/M/L (dB·A)	40 / 36 / 31	-
	Under air inlet	H/M/L (dB·A)	-	39 / 36 / 33
	Back air inlet	H/M/L (dB·A)	-	30 / 28 / 26
Sound power level		H/M/L (dB·A)	55 / 51 / 46	-
	Under air inlet	H/M/L (dB·A)	-	54 / 51 / 48
	Back air inlet	H/M/L (dB·A)	-	45 / 43 / 41
Outdoor unit				
Power supply			1 phase 230V (220-240V) 50Hz	1 phase 230V (220-240V) 50Hz
Outer dimension	Standard length (m)		7.5	7.5
	Min. length (m)		5	5
	Max. total length (m)		50	50
	Over 30m		40g/m (31m to 50m)	40g/m (31m to 50m)
	Hight difference	Outdoor lower (m)	30	30
		Outdoor high (m)	30	30
Fan unit		Fan	Propeller fan	Propeller fan
	Standard air flow high (m3/h)	3000	3000	
	Motor (W)	63	63	
Connecting pipe	Gas side	Main (mm)	15.9	15.9
		Sub (mm)	12.7	12.7
	Liquid side	Main (mm)	9.5	9.5
		Sub (mm)	6.4	6.4
Sound pressure level	Cooling/Heating (dB·A)	48 / 49	48 / 49	
Sound power level	Cooling/Heating (dB·A)	64 / 65	64 / 65	

*IEC standard

2. Specifications

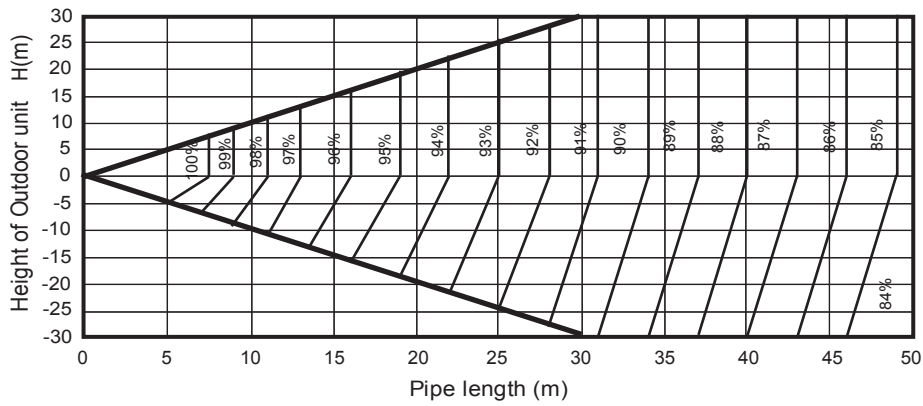
Model	Outdoor unit	RAV-SP564AT-E, RAV-SP564ATZ-E, RAV-SP564ATZG-E	RAV-SP804AT-E, RAV-SP804ATZ-E, RAV-SP804ATZG-E	
Power supply	1 phase 230V (220-240V) 50Hz 50Hz(Power exclusive to outdoor is required.)			
Compressor	Type	Hermetic compressor		
	Motor (kW)	1.1	2.0	
	Pole	4	4	
Refrigerant charged	(kg)	1.4	2.1	
Refrigerant control	Pulse motor valve			
Pipe	Standard length (m)	7.5	7.5	
	Min. length (m)	5	5	
	Max. total length (m)	50	50	
	Additional refrigerant charge under long piping connection		20g/m(21m to 50m)	40g/m(31m to 50m)
	Height difference	Outdoor lower (m)	30	30
Outdoor higher (m)		30	30	
Outer dimension	Height (mm)	550	890	
	Width (mm)	780	900	
	Depth (mm)	290	320	
Appearance	Silky shade (Muncel 1Y8.5-0.5)			
Total weight	(kg)	44	63	
Heat exchanger	Finned tube			
Fan unit	Fan	Propeller fan		
	Standard air flow (m ³ /h)	2400	3000	
	Motor (W)	43	63	
Connecting pipe	Gas side (mm)	12.7	15.9	
	Liquid side (mm)	6.4	9.5	
Sound pressure level	Cooling / Heating (dB·A)	47 / 48	48 / 49	
Sound power level	Cooling / Heating (dB·A)	63 / 64	64 / 65	
Outside air temperature, cooling	(C)	43 to -15C		
Outside air temperature, Heating	(C)	15 to -20C		

3. Capacity Correction

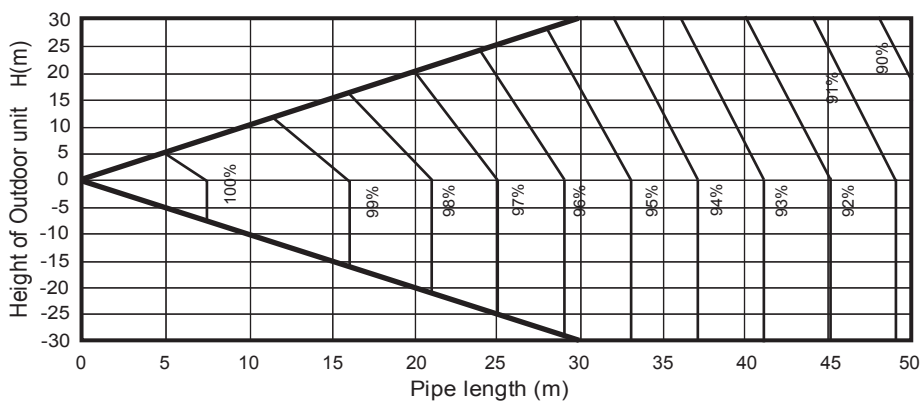
Connecting pipe length and lift difference between indoor units vs. capacity correction value

RAV-SM564AT-E, RAV-SP564ATZ-E, RAV-SP564ATZG-E

[Cooling]

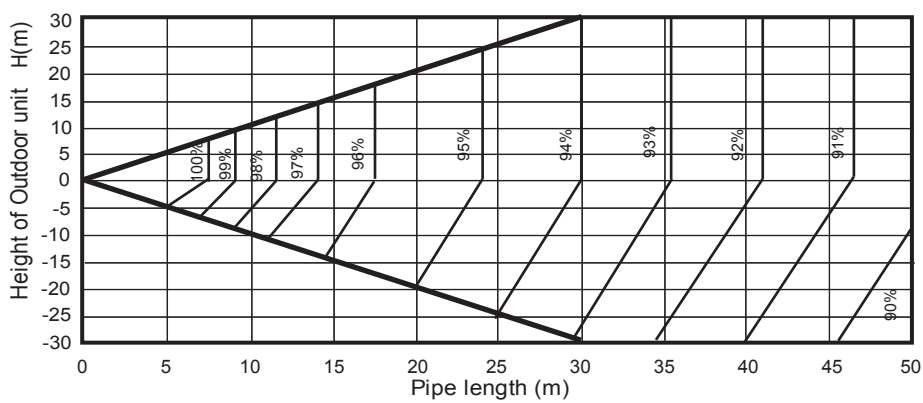


[Heating]

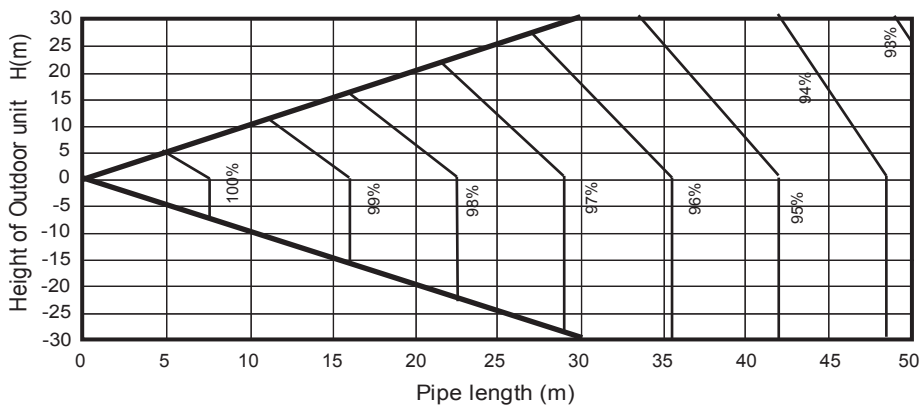


RAV-SM804AT-E, RAV-SP804ATZ-E, RAV-SP804ATZG-E

[Cooling]

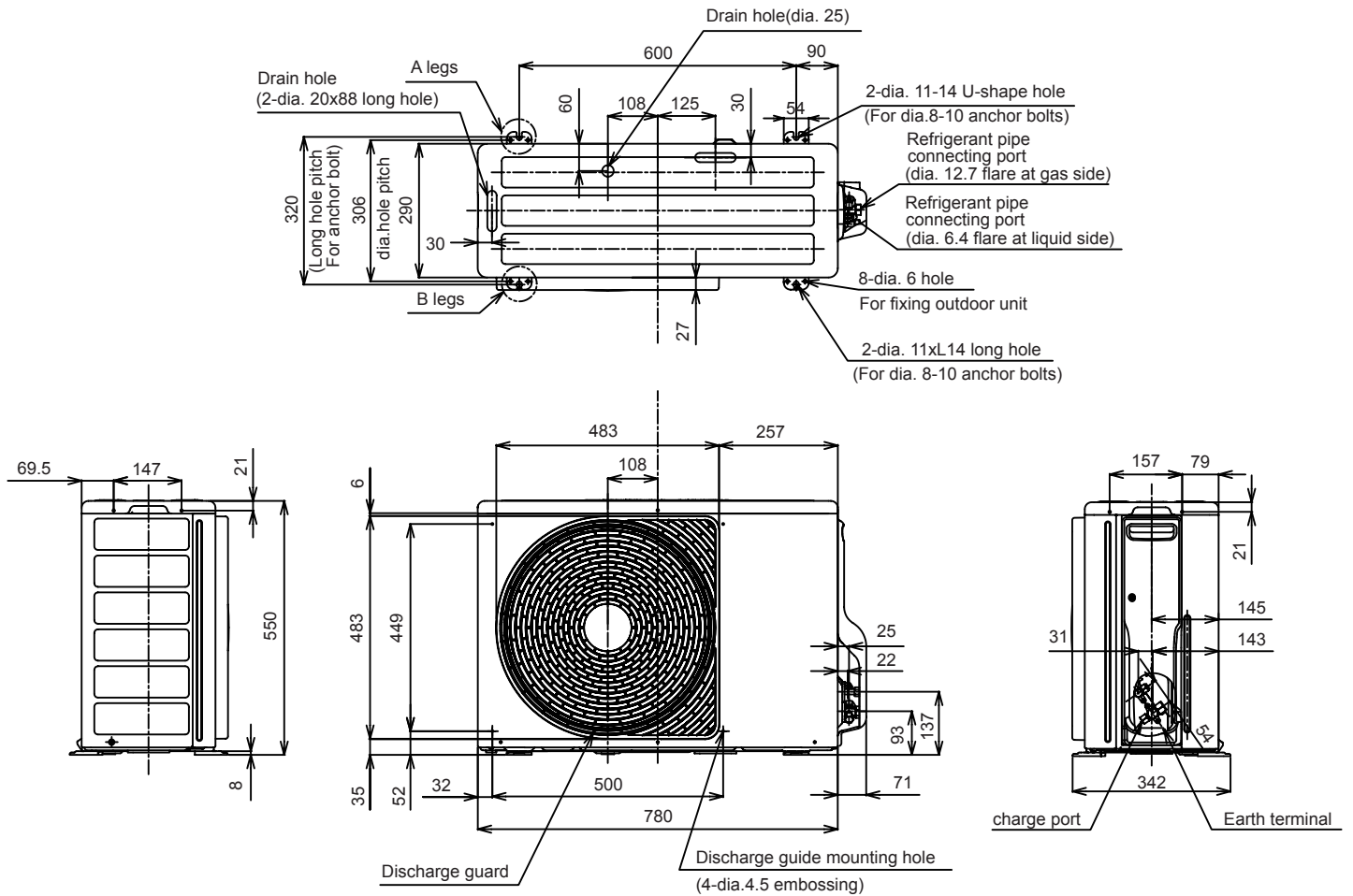


[Heating]

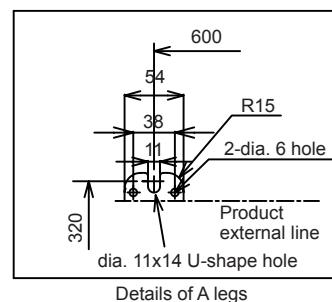
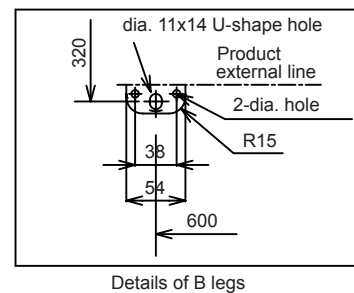
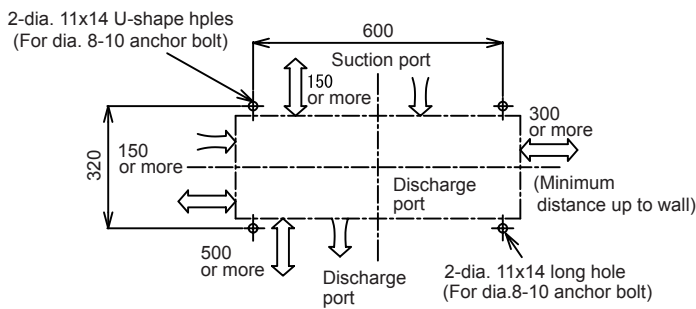


4. Dimension

RAV-SP564AT-E, RAV-SP564ATZ-E, RAV-SP564ATZG-E



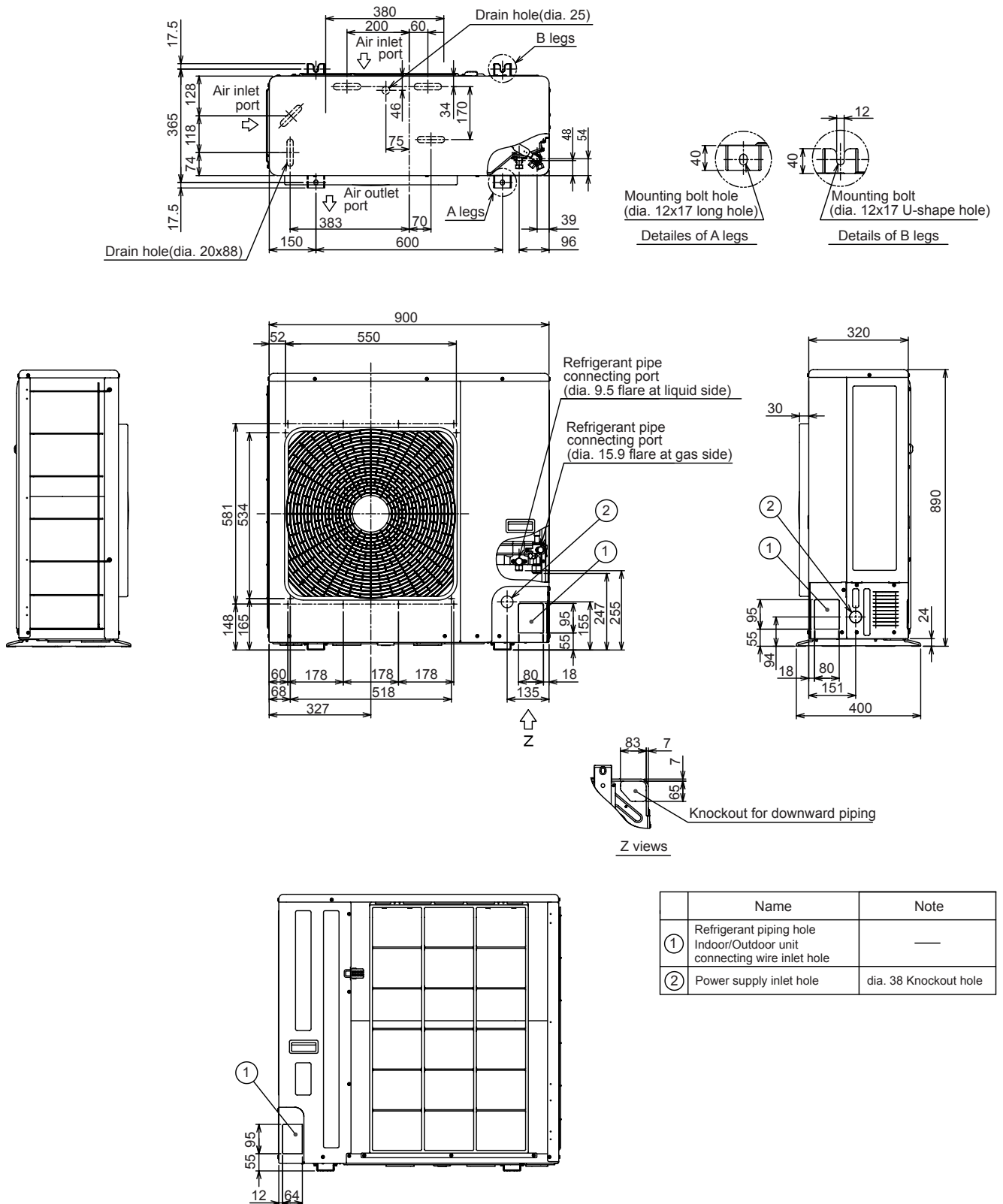
Space required for service



(Unit : mm)

4. Dimension

RAV-SP804AT-E, RAV-SP804ATZ-E, RAV-SP804ATZG-E

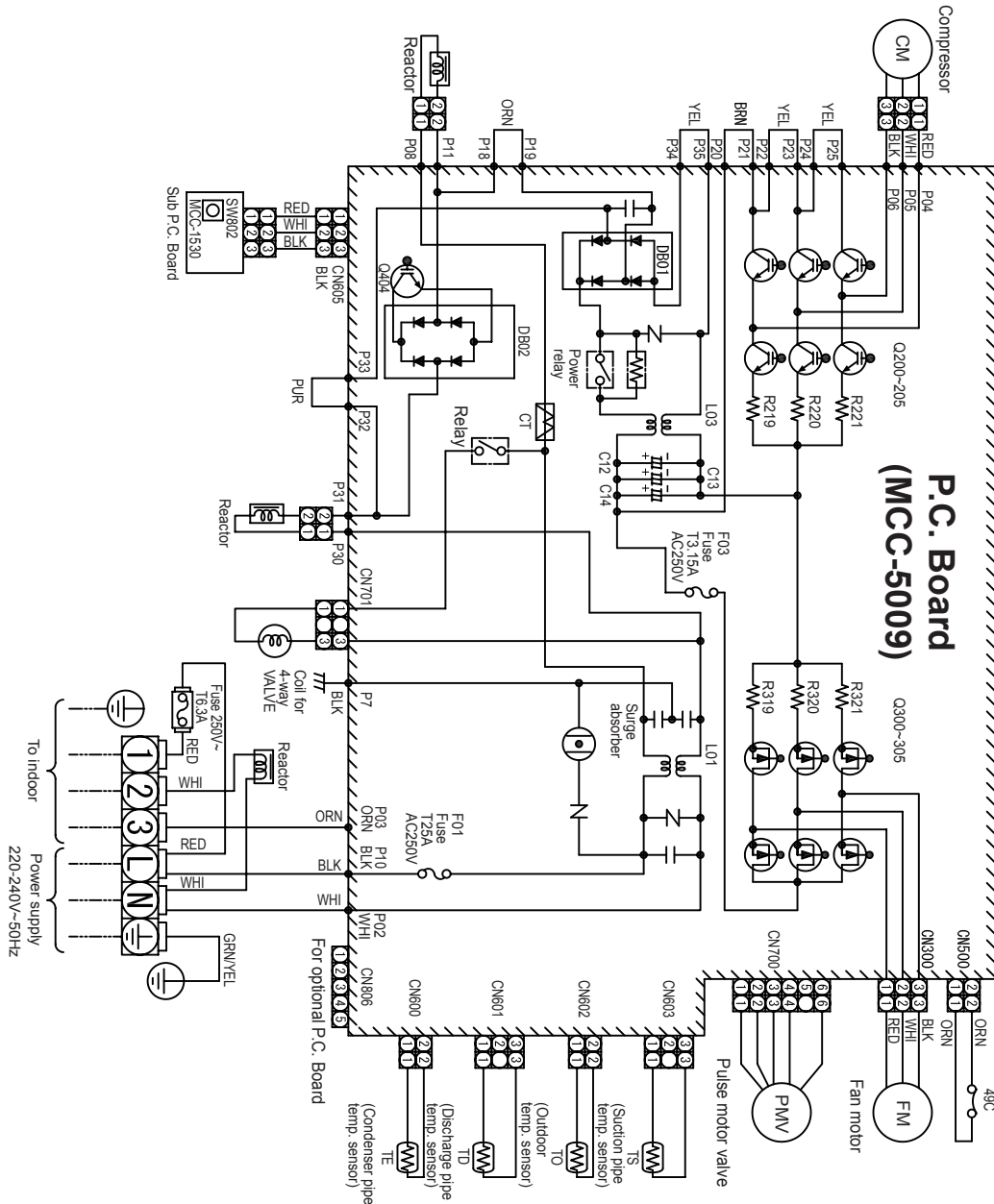


	Name	Note
①	Refrigerant piping hole Indoor/Outdoor unit connecting wire inlet hole	—
②	Power supply inlet hole	dia. 38 Knockout hole

(Unit:mm)

5. Wiring Diagram

RAV-SP564AT-E, RAV-SP564ATZ-E, RAV-SP564ATZG-E



NOTE


CM	: Compressor
PMV	: Pulse Motor Valve
FM	: Fan Motor
TE	: Heat Exchanger Temp. Sensor
TD	: Discharge Temp. Sensor
TO	: Outdoor Temp. Sensor
TS	: Suction Temp. Sensor
CT	: Current Transformer
49C	: Compressor Case Thermostat

Color Identification

BLK	: BLACK	WHI	: WHITE
BLU	: BLUE	BRN	: BROWN
RED	: RED	ORN	: ORANGE
GRY	: GRAY	YEL	: YELLOW
PNK	: PINK	PUR	: PURPLE
GRN	: GREEN		

CAUTION : HIGH VOLTAGE

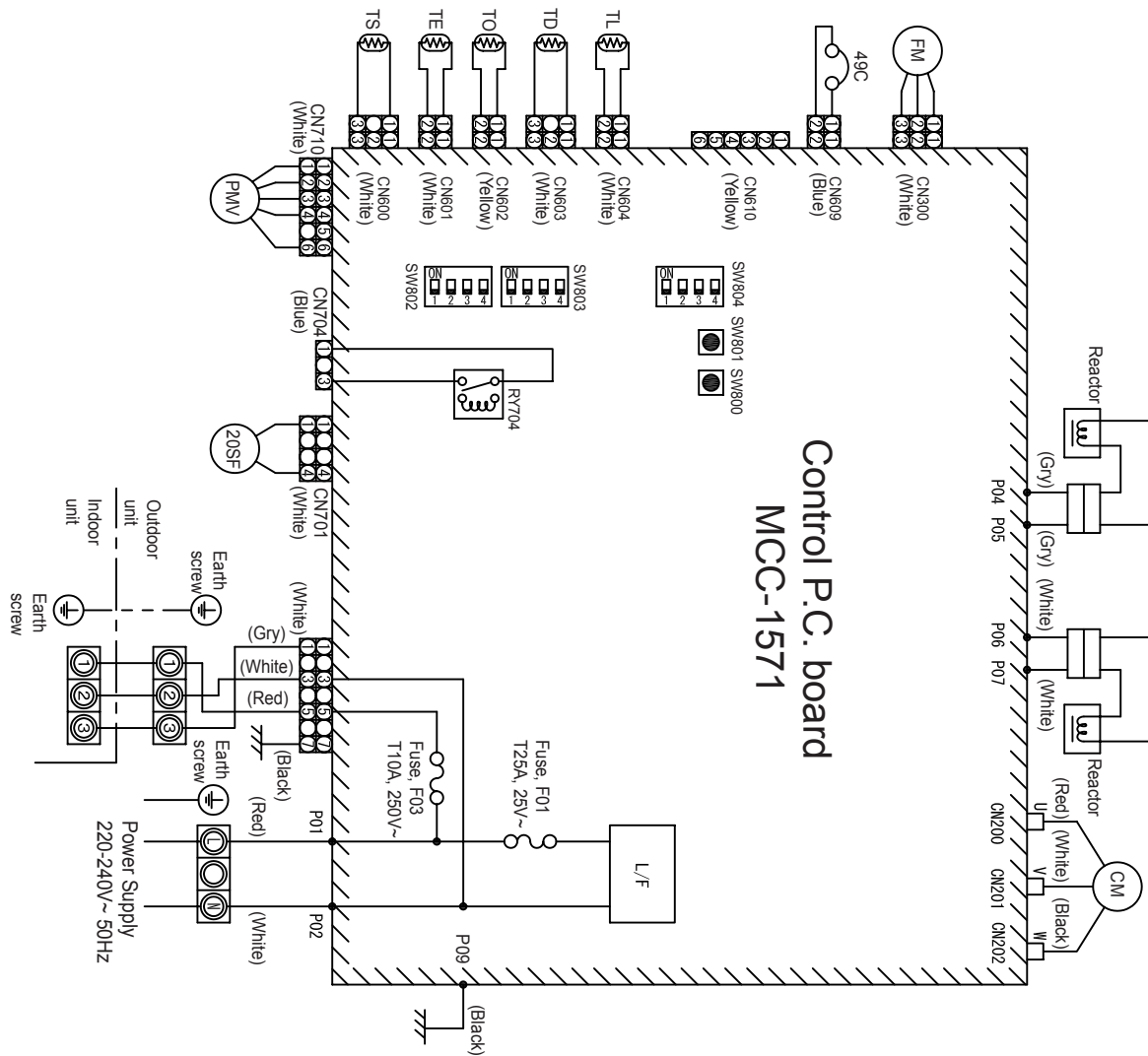
The high voltage circuit is incorporated. Be careful to do the check service, as the electric shock may be caused in case of touching parts on the P.C. board by hand



The 4-way valve coil is turned on while the cooling operation

5. Wiring Diagram

RAV-SP804AT-E, RAV-SP804ATZ-E, RAV-SP804ATZG-E



Symbol	Part name
CM	Compressor
FM	Fan motor
PMV	Pulse motor valve
TD	Pipe temperature sensor (Discharge)
TS	Pipe temperature sensor (Suction)
TE	Heat exchanger sensor 1
TL	Heat exchanger sensor 2
TO	Outside temperature sensor
20SF	4-way valve coil
49C	Compressor case thermostat
L/F	Line Filter

1. © indicates the terminal block. Alphanumeric characters in the circle indicate the terminal No.
2. [Hatched box symbol] indicates the P.C. board.
3. For the indoor unit circuit, refer to the wiring diagram of the indoor unit.

6. Sensible heat capacity

RAV-SM562MUT-E/RAV-SP564AT-E, RAV-SP564ATZ-E, RAV-SP564ATZG-E

unit size	outdoor air temp. CDB	indoor air temp.																	
		14.0CWB 20.0CDB		15.0CWB 21.5CDB		16.0CWB 23.0CDB		17.0CWB 24.5CDB		18.0CWB 26.0CDB		19.0CWB 27.0CDB		20.0CWB 28.0CDB		22.0CWB 30.0CDB		24.0CWB 32.0CDB	
		TC	SHC	TC	SHC	TC	SHC	TC	SHC	TC	SHC	TC	SHC	TC	SHC	TC	SHC	TC	SHC
562	10.0	4.7	3.5	4.9	3.7	5.2	3.8	5.4	4.0	5.6	4.1	5.7	4.2	5.9	4.4	6.2	4.6	6.5	4.8
	12.0	4.7	3.5	4.9	3.6	5.2	3.8	5.3	3.9	5.5	4.1	5.7	4.2	5.8	4.3	6.2	4.6	6.5	4.8
	14.0	4.6	3.4	4.9	3.6	5.1	3.8	5.3	3.9	5.5	4.1	5.6	4.2	5.8	4.3	6.1	4.6	6.4	4.8
	16.0	4.6	3.4	4.8	3.6	5.1	3.8	5.3	3.9	5.4	4.0	5.6	4.1	5.8	4.3	6.1	4.5	6.4	4.7
	18.0	4.6	3.4	4.8	3.6	5.0	3.7	5.2	3.9	5.4	4.0	5.6	4.1	5.7	4.2	6.1	4.5	6.3	4.7
	20.0	4.5	3.4	4.8	3.5	5.0	3.7	5.2	3.8	5.4	4.0	5.5	4.1	5.7	4.2	6.0	4.4	6.3	4.6
	21.0	4.5	3.3	4.7	3.5	5.0	3.7	5.2	3.8	5.3	3.9	5.5	4.1	5.6	4.2	6.0	4.4	6.3	4.6
	23.0	4.5	3.3	4.7	3.5	4.9	3.6	5.1	3.8	5.3	3.9	5.4	4.0	5.6	4.1	5.9	4.4	6.2	4.6
	25.0	4.4	3.3	4.6	3.4	4.9	3.6	5.0	3.7	5.2	3.9	5.4	4.0	5.5	4.1	5.9	4.3	6.1	4.5
	27.0	4.4	3.2	4.6	3.4	4.8	3.6	5.0	3.7	5.2	3.8	5.3	3.9	5.5	4.0	5.8	4.3	6.0	4.5
	29.0	4.3	3.2	4.5	3.4	4.8	3.5	4.9	3.6	5.1	3.8	5.2	3.9	5.4	4.0	5.7	4.2	6.0	4.4
	31.0	4.2	3.1	4.5	3.3	4.7	3.5	4.9	3.6	5.0	3.7	5.2	3.8	5.3	3.9	5.6	4.2	5.9	4.4
	33.0	4.2	3.1	4.4	3.3	4.6	3.4	4.8	3.5	4.9	3.7	5.1	3.8	5.2	3.9	5.5	4.1	5.8	4.3
	35.0	4.1	3.0	4.3	3.2	4.5	3.4	4.7	3.5	4.9	3.6	5.0	3.7	5.1	3.8	5.4	4.0	5.7	4.2
37.0	4.0	3.0	4.2	3.1	4.4	3.3	4.6	3.4	4.8	3.5	4.9	3.6	5.0	3.7	5.3	4.0	5.6	4.1	
39.0	3.9	2.9	4.2	3.1	4.4	3.2	4.5	3.3	4.7	3.5	4.8	3.6	4.9	3.7	5.2	3.9	5.5	4.1	

RAV-SM564SDT-E/RAV-SP564AT-E, RAV-SP564ATZ-E, RAV-SP564ATZG-E

unit size	outdoor air temp. CDB	indoor air temp.																	
		14.0CWB 20.0CDB		15.0CWB 21.5CDB		16.0CWB 23.0CDB		17.0CWB 24.5CDB		18.0CWB 26.0CDB		19.0CWB 27.0CDB		20.0CWB 28.0CDB		22.0CWB 30.0CDB		24.0CWB 32.0CDB	
		TC	SHC	TC	SHC	TC	SHC	TC	SHC	TC	SHC	TC	SHC	TC	SHC	TC	SHC	TC	SHC
564	10.0	4.7	3.5	4.9	3.7	5.2	3.8	5.4	4.0	5.6	4.1	5.7	4.2	5.9	4.4	6.2	4.6	6.5	4.8
	12.0	4.7	3.5	4.9	3.6	5.2	3.8	5.3	3.9	5.5	4.1	5.7	4.2	5.8	4.3	6.2	4.6	6.5	4.8
	14.0	4.6	3.4	4.9	3.6	5.1	3.8	5.3	3.9	5.5	4.1	5.6	4.2	5.8	4.3	6.1	4.6	6.4	4.8
	16.0	4.6	3.4	4.8	3.6	5.1	3.8	5.3	3.9	5.4	4.0	5.6	4.1	5.8	4.3	6.1	4.5	6.4	4.7
	18.0	4.6	3.4	4.8	3.6	5.0	3.7	5.2	3.9	5.4	4.0	5.6	4.1	5.7	4.2	6.1	4.5	6.3	4.7
	20.0	4.5	3.4	4.8	3.5	5.0	3.7	5.2	3.8	5.4	4.0	5.5	4.1	5.7	4.2	6.0	4.4	6.3	4.6
	21.0	4.5	3.3	4.7	3.5	5.0	3.7	5.2	3.8	5.3	3.9	5.5	4.1	5.6	4.2	6.0	4.4	6.3	4.6
	23.0	4.5	3.3	4.7	3.5	4.9	3.6	5.1	3.8	5.3	3.9	5.4	4.0	5.6	4.1	5.9	4.4	6.2	4.6
	25.0	4.4	3.3	4.6	3.4	4.9	3.6	5.0	3.7	5.2	3.9	5.4	4.0	5.5	4.1	5.9	4.3	6.1	4.5
	27.0	4.4	3.2	4.6	3.4	4.8	3.6	5.0	3.7	5.2	3.8	5.3	3.9	5.5	4.0	5.8	4.3	6.0	4.5
	29.0	4.3	3.2	4.5	3.4	4.8	3.5	4.9	3.6	5.1	3.8	5.2	3.9	5.4	4.0	5.7	4.2	6.0	4.4
	31.0	4.2	3.1	4.5	3.3	4.7	3.5	4.9	3.6	5.0	3.7	5.2	3.8	5.3	3.9	5.6	4.2	5.9	4.4
	33.0	4.2	3.1	4.4	3.3	4.6	3.4	4.8	3.5	4.9	3.7	5.1	3.8	5.2	3.9	5.5	4.1	5.8	4.3
	35.0	4.1	3.0	4.3	3.2	4.5	3.4	4.7	3.5	4.9	3.6	5.0	3.7	5.1	3.8	5.4	4.0	5.7	4.2
37.0	4.0	3.0	4.2	3.1	4.4	3.3	4.6	3.4	4.8	3.5	4.9	3.6	5.0	3.7	5.3	4.0	5.6	4.1	
39.0	3.9	2.9	4.2	3.1	4.4	3.2	4.5	3.3	4.7	3.5	4.8	3.6	4.9	3.7	5.2	3.9	5.5	4.1	

TC:Total Capacity [kW]
SHC:Sensible Heat Capacity [kW]

7.Part Load Performance

Indoor unit : RAV-SM564UT-E

Outdoor unit : RAV-SP564AT-E, RAV-SP564ATZ-E, RAV-SP564ATZG-E

	Cooling		Heating	
	Capacity Q(W)	Power consumption W(W)	Capacity Q(W)	Power consumption W(W)
MINIMUM	1200	200	900	150
RATING	5300	1470	5600	1200

Cooling

Outdoor temperature(°C)		Load(%)									
		100	90	80	70	60	50	40	30	20	10
40	Q	5010	4510	4010	3510	3010	2510	2010	1500	1140	1140
	W	1580	1310	1070	860	670	510	380	270	210	210
35	Q	5300	4770	4240	3710	3180	2650	2120	1590	1200	1200
	W	1470	1222	997	799	625	477	354	256	200	200
30	Q	5590	5030	4470	3910	3350	2790	2230	1680	1270	1270
	W	1360	1130	930	740	580	440	330	240	190	190
25	Q	5870	5290	4700	4110	3520	2940	2350	1760	1330	1330
	W	1260	1050	850	680	540	410	300	220	170	170
20	Q	6160	5550	4930	4310	3700	3080	2460	1850	1400	1400
	W	1150	960	780	630	490	370	280	200	160	160

Heating

Outdoor temperature(°C)		Load(%)									
		100	90	80	70	60	50	40	30	20	10
20	Q	7470	6730	5980	5230	4480	3740	2990	2240	1490	1200
	W	1410	1210	1020	850	690	550	420	300	210	180
15	Q	6750	6080	5400	4730	4050	3380	2700	2030	1350	1090
	W	1330	1150	960	800	650	520	400	290	200	170
10	Q	6130	5520	4910	4290	3680	3070	2450	1840	1230	990
	W	1260	1090	910	760	620	490	380	270	190	160
7	Q	5600	5040	4480	3920	3360	2800	2240	1680	1120	900
	W	1210	1040	870	730	590	470	360	260	180	150
5	Q	5220	4700	4180	3660	3130	2610	2090	1570	1040	840
	W	1170	1010	840	710	570	460	350	250	170	150
2	Q	4680	4210	3750	3280	2810	2340	1870	1400	940	750
	W	1120	960	800	670	540	430	330	240	170	140
0	Q	3660	3290	2930	2560	2190	1830	1460	1100	730	590
	W	990	850	710	600	480	380	290	210	150	120
-5	Q	3660	3290	2930	2560	2190	1830	1460	1100	730	590
	W	990	850	710	600	480	380	290	210	150	120
-7	Q	3440	3090	2750	2410	2060	1720	1380	1030	690	550
	W	960	830	690	580	470	370	290	210	140	120
-10	Q	3150	2830	2520	2200	1890	1570	1260	940	630	510
	W	920	790	660	560	450	360	270	200	140	110
-15	Q	2650	2390	2120	1860	1590	1330	1060	800	530	430
	W	870	750	620	520	420	340	260	190	130	110

7.Part Load Performance

Indoor unit : RAV-SM804UT-E

Outdoor unit : RAV-SP804AT-E, RAV-SP804ATZ-E, RAV-SP804ATZG-E

	Cooling		Heating	
	Capacity Q(W)	Power consumption W(W)	Capacity Q(W)	Power consumption W(W)
MINIMUM	1900	300	1300	250
RATING	7100	1860	8000	1910

Cooling

Outdoor temperature(°C)		Load(%)									
		100	90	80	70	60	50	40	30	20	10
40	Q	6720	6040	5370	4700	4030	3360	2690	2010	1800	1800
	W	1990	1670	1380	1120	890	680	510	360	320	320
35	Q	7100	6390	5680	4970	4260	3550	2840	2130	1900	1900
	W	1860	1561	1290	1045	828	638	474	338	300	300
30	Q	7480	6740	5990	5240	4490	3740	2990	2250	2000	2000
	W	1730	1450	1200	970	770	590	440	310	280	280
25	Q	7870	7080	6300	5510	4720	3930	3150	2360	2110	2110
	W	1590	1340	1110	900	710	550	410	290	260	260
20	Q	8250	7430	6600	5780	4950	4130	3300	2480	2210	2210
	W	1460	1230	1010	820	650	500	370	270	240	240

Heating

Outdoor temperature(°C)		Load(%)									
		100	90	80	70	60	50	40	30	20	10
20	Q	10680	9610	8540	7470	6410	5340	4270	3200	2140	1740
	W	2230	1900	1590	1320	1060	840	640	480	340	290
15	Q	9650	8680	7720	6750	5790	4820	3860	2890	1930	1570
	W	2110	1800	1500	1250	1000	790	610	450	320	280
10	Q	8760	7880	7010	6130	5260	4380	3500	2630	1750	1420
	W	2000	1700	1420	1180	950	750	570	430	300	260
7	Q	8000	7200	6400	5600	4800	4000	3200	2400	1600	1300
	W	1910	1630	1360	1130	910	720	550	410	290	250
5	Q	7460	6720	5970	5220	4480	3730	2990	2240	1490	1210
	W	1850	1580	1320	1090	880	700	530	400	280	240
2	Q	6690	6020	5350	4680	4010	3340	2680	2010	1340	1090
	W	1760	1500	1250	1040	840	660	510	380	270	230
0	Q	5220	4700	4180	3660	3130	2610	2090	1570	1040	850
	W	1560	1330	1110	930	750	590	450	340	240	200
-5	Q	5220	4700	4180	3660	3130	2610	2090	1570	1040	850
	W	1560	1330	1110	930	750	590	450	340	240	200
-7	Q	4910	4420	3930	3440	2950	2460	1960	1470	980	800
	W	1520	1290	1080	900	720	570	440	330	230	200
-10	Q	4500	4050	3600	3150	2700	2250	1800	1350	900	730
	W	1450	1240	1030	860	690	550	420	310	220	190
-15	Q	3790	3410	3030	2650	2280	1900	1520	1140	760	620
	W	1370	1170	980	810	650	520	390	290	210	180

7.Part Load Performance

Indoor unit : RAV-SM562MUT-E

Outdoor unit : RAV-SP564AT-E, RAV-SP564ATZ-E, RAV-SP564ATZG-E

	Cooling		Heating	
	Capacity Q(W)	Power consumption W(W)	Capacity Q(W)	Power consumption W(W)
MINIMUM	1200	210	900	170
RATING	5000	1560	5600	1540

Cooling

Outdoor temperature(°C)		Load(%)									
		100	90	80	70	60	50	40	30	20	10
40	Q	4730	4260	3780	3310	2840	2360	1890	1420	1140	1140
	W	1670	1450	1240	1040	850	660	490	320	230	230
35	Q	5000	4500	4000	3500	3000	2500	2000	1500	1200	1200
	W	1560	1356	1160	972	792	620	456	300	210	210
30	Q	5270	4740	4220	3690	3160	2640	2110	1580	1270	1270
	W	1450	1260	1080	900	740	580	420	280	190	190
25	Q	5540	4990	4430	3880	3330	2770	2220	1660	1330	1330
	W	1340	1160	990	830	680	530	390	260	180	180
20	Q	5810	5230	4650	4070	3490	2910	2330	1740	1400	1400
	W	1220	1060	910	760	620	490	360	240	160	160

Heating

Outdoor temperature(°C)		Load(%)									
		100	90	80	70	60	50	40	30	20	10
20	Q	7470	6730	5980	5230	4480	3740	2990	2240	1490	1200
	W	1800	1560	1330	1110	910	720	560	400	260	200
15	Q	6750	6080	5400	4730	4050	3380	2700	2030	1350	1090
	W	1700	1480	1260	1050	860	680	530	370	240	190
10	Q	6130	5520	4910	4290	3680	3070	2450	1840	1230	990
	W	1610	1400	1190	990	820	650	500	360	230	180
7	Q	5600	5040	4480	3920	3360	2800	2240	1680	1120	900
	W	1540	1340	1140	950	780	620	480	340	220	170
5	Q	5220	4700	4180	3660	3130	2610	2090	1570	1040	840
	W	1490	1300	1100	920	760	600	470	330	210	160
2	Q	4680	4210	3750	3280	2810	2340	1870	1400	940	750
	W	1420	1240	1050	880	720	570	440	310	200	160
0	Q	3660	3290	2930	2560	2190	1830	1460	1100	730	590
	W	1260	1100	930	780	640	510	390	280	180	140
-5	Q	3660	3290	2930	2560	2190	1830	1460	1100	730	590
	W	1260	1100	930	780	640	510	390	280	180	140
-7	Q	3440	3090	2750	2410	2060	1720	1380	1030	690	550
	W	1220	1060	910	750	620	490	380	270	170	130
-10	Q	3150	2830	2520	2200	1890	1570	1260	940	630	510
	W	1170	1020	870	720	590	470	370	260	170	130
-15	Q	2650	2390	2120	1860	1590	1330	1060	800	530	430
	W	1110	960	820	680	560	440	340	240	160	120

7.Part Load Performance

Indoor unit : RAV-SM562BT-E

Outdoor unit : RAV-SP564AT-E, RAV-SP564ATZ-E, RAV-SP564ATZG-E

	Cooling		Heating	
	Capacity Q(W)	Power consumption W(W)	Capacity Q(W)	Power consumption W(W)
MINIMUM	1200	210	900	170
RATING	5000	1560	5600	1550

Cooling

Outdoor temperature(°C)		Load(%)									
		100	90	80	70	60	50	40	30	20	10
40	Q	4730	4260	3780	3310	2840	2360	1890	1420	1140	1140
	W	1670	1510	1340	1160	970	770	570	360	230	230
35	Q	5000	4500	4000	3500	3000	2500	2000	1500	1200	1200
	W	1560	1407	1246	1078	903	720	530	332	210	210
30	Q	5270	4740	4220	3690	3160	2640	2110	1580	1270	1270
	W	1450	1310	1160	1000	840	670	490	310	190	190
25	Q	5540	4990	4430	3880	3330	2770	2220	1660	1330	1330
	W	1340	1210	1070	920	770	620	450	280	180	180
20	Q	5810	5230	4650	4070	3490	2910	2330	1740	1400	1400
	W	1220	1100	980	850	710	570	420	260	160	160

Heating

Outdoor temperature(°C)		Load(%)									
		100	90	80	70	60	50	40	30	20	10
20	Q	7470	6730	5980	5230	4480	3740	2990	2240	1490	1200
	W	1810	1590	1380	1180	990	790	610	430	270	200
15	Q	6750	6080	5400	4730	4050	3380	2700	2030	1350	1090
	W	1710	1500	1300	1110	940	750	570	410	250	190
10	Q	6130	5520	4910	4290	3680	3070	2450	1840	1230	990
	W	1620	1420	1230	1060	890	710	540	390	240	180
7	Q	5600	5040	4480	3920	3360	2800	2240	1680	1120	900
	W	1550	1360	1180	1010	850	680	520	370	230	170
5	Q	5220	4700	4180	3660	3130	2610	2090	1570	1040	840
	W	1500	1320	1140	980	820	660	500	360	220	160
2	Q	4680	4210	3750	3280	2810	2340	1870	1400	940	750
	W	1430	1250	1090	930	780	630	480	340	210	160
0	Q	3660	3290	2930	2560	2190	1830	1460	1100	730	590
	W	1270	1110	970	830	700	560	430	300	190	140
-5	Q	3660	3290	2930	2560	2190	1830	1460	1100	730	590
	W	1270	1110	970	830	700	560	430	300	190	140
-7	Q	3440	3090	2750	2410	2060	1720	1380	1030	690	550
	W	1230	1080	940	800	670	540	410	290	180	130
-10	Q	3150	2830	2520	2200	1890	1570	1260	940	630	510
	W	1180	1030	900	770	650	520	400	280	180	130
-15	Q	2650	2390	2120	1860	1590	1330	1060	800	530	430
	W	1110	980	850	720	610	490	370	270	170	120

7.Part Load Performance

Indoor unit : RAV-SM802BT-E

Outdoor unit : RAV-SP804AT-E, RAV-SP804ATZ-E, RAV-SP804ATZG-E

	Cooling		Heating	
	Capacity Q(W)	Power consumption W(W)	Capacity Q(W)	Power consumption W(W)
MINIMUM	1900	300	1300	270
RATING	7100	2210	8000	2210

Cooling

Outdoor temperature(°C)		Load(%)									
		100	90	80	70	60	50	40	30	20	10
40	Q	6720	6040	5370	4700	4030	3360	2690	2010	1800	1800
	W	2370	2010	1680	1370	1090	830	590	380	320	320
35	Q	7100	6390	5680	4970	4260	3550	2840	2130	1900	1900
	W	2210	1877	1567	1280	1015	774	555	359	300	300
30	Q	7480	6740	5990	5240	4490	3740	2990	2250	2000	2000
	W	2050	1740	1450	1190	940	720	510	330	280	280
25	Q	7870	7080	6300	5510	4720	3930	3150	2360	2110	2110
	W	1890	1610	1340	1100	870	660	480	310	260	260
20	Q	8250	7430	6600	5780	4950	4130	3300	2480	2210	2210
	W	1730	1470	1230	1000	800	610	440	280	240	240

Heating

Outdoor temperature(°C)		Load(%)									
		100	90	80	70	60	50	40	30	20	10
20	Q	10680	9610	8540	7470	6410	5340	4270	3200	2140	1740
	W	2580	2280	1970	1690	1410	1140	890	640	410	320
15	Q	9650	8680	7720	6750	5790	4820	3860	2890	1930	1570
	W	2440	2150	1860	1600	1330	1080	840	610	390	300
10	Q	8760	7880	7010	6130	5260	4380	3500	2630	1750	1420
	W	2310	2040	1770	1520	1260	1020	790	570	370	280
7	Q	8000	7200	6400	5600	4800	4000	3200	2400	1600	1300
	W	2210	1950	1690	1450	1210	980	760	550	350	270
5	Q	7460	6720	5970	5220	4480	3730	2990	2240	1490	1210
	W	2140	1890	1640	1410	1170	950	740	530	340	260
2	Q	6690	6020	5350	4680	4010	3340	2680	2010	1340	1090
	W	2040	1800	1560	1340	1120	900	700	510	320	250
0	Q	5220	4700	4180	3660	3130	2610	2090	1570	1040	850
	W	1810	1600	1380	1190	990	800	620	450	290	220
-5	Q	5220	4700	4180	3660	3130	2610	2090	1570	1040	850
	W	1810	1600	1380	1190	990	800	620	450	290	220
-7	Q	4910	4420	3930	3440	2950	2460	1960	1470	980	800
	W	1750	1550	1340	1150	960	780	600	440	280	210
-10	Q	4500	4050	3600	3150	2700	2250	1800	1350	900	730
	W	1680	1480	1290	1100	920	750	580	420	270	210
-15	Q	3790	3410	3030	2650	2280	1900	1520	1140	760	620
	W	1590	1400	1210	1040	870	700	550	390	250	190

7.Part Load Performance

Indoor unit : RAV-SM564SDT-E

Outdoor unit : RAV-SP564AT-E, RAV-SP564ATZ-E, RAV-SP564ATZG-E

	Cooling		Heating	
	Capacity Q(W)	Power consumption W(W)	Capacity Q(W)	Power consumption W(W)
MINIMUM	1200	210	900	170
RATING	5000	1560	5600	1440

Cooling

Outdoor temperature(°C)		Load(%)									
		100	90	80	70	60	50	40	30	20	10
40	Q	4730	4260	3780	3310	2840	2360	1890	1420	1140	1140
	W	1670	1450	1240	1040	850	660	490	320	230	230
35	Q	5000	4500	4000	3500	3000	2500	2000	1500	1200	1200
	W	1560	1356	1160	972	792	620	456	300	210	210
30	Q	5270	4740	4220	3690	3160	2640	2110	1580	1270	1270
	W	1450	1260	1080	900	740	580	420	280	190	190
25	Q	5540	4990	4430	3880	3330	2770	2220	1660	1330	1330
	W	1340	1160	990	830	680	530	390	260	180	180
20	Q	5810	5230	4650	4070	3490	2910	2330	1740	1400	1400
	W	1220	1060	910	760	620	490	360	240	160	160

Heating

Outdoor temperature(°C)		Load(%)									
		100	90	80	70	60	50	40	30	20	10
20	Q	7470	6730	5980	5230	4480	3740	2990	2240	1490	1200
	W	1680	1470	1270	1090	900	720	560	410	260	200
15	Q	6750	6080	5400	4730	4050	3380	2700	2030	1350	1090
	W	1590	1390	1200	1030	850	680	530	390	240	190
10	Q	6130	5520	4910	4290	3680	3070	2450	1840	1230	990
	W	1500	1320	1140	970	800	650	500	370	230	180
7	Q	5600	5040	4480	3920	3360	2800	2240	1680	1120	900
	W	1440	1260	1090	930	770	620	480	350	220	170
5	Q	5220	4700	4180	3660	3130	2610	2090	1570	1040	840
	W	1400	1220	1060	900	750	600	470	340	210	160
2	Q	4680	4210	3750	3280	2810	2340	1870	1400	940	750
	W	1330	1160	1000	860	710	570	440	320	200	160
0	Q	3660	3290	2930	2560	2190	1830	1460	1100	730	590
	W	1180	1030	890	760	630	510	390	290	180	140
-5	Q	3660	3290	2930	2560	2190	1830	1460	1100	730	590
	W	1180	1030	890	760	630	510	390	290	180	140
-7	Q	3440	3090	2750	2410	2060	1720	1380	1030	690	550
	W	1140	1000	870	740	610	490	380	280	170	130
-10	Q	3150	2830	2520	2200	1890	1570	1260	940	630	510
	W	1100	960	830	710	590	470	370	270	170	130
-15	Q	2650	2390	2120	1860	1590	1330	1060	800	530	430
	W	1030	900	780	670	550	440	340	250	160	120

7.Part Load Performance

Indoor unit : RAV-SM562CT-E

Outdoor unit : RAV-SP564AT-E, RAV-SP564ATZ-E, RAV-SP564ATZG-E

	Cooling		Heating	
	Capacity Q(W)	Power consumption W(W)	Capacity Q(W)	Power consumption W(W)
MINIMUM	1200	210	900	170
RATING	5000	1560	5600	1470

Cooling

Outdoor temperature(°C)		Load(%)									
		100	90	80	70	60	50	40	30	20	10
40	Q	4730	4260	3780	3310	2840	2360	1890	1420	1140	1140
	W	1670	1440	1230	1020	830	640	470	310	230	230
35	Q	5000	4500	4000	3500	3000	2500	2000	1500	1200	1200
	W	1560	1346	1143	951	770	600	441	293	210	210
30	Q	5270	4740	4220	3690	3160	2640	2110	1580	1270	1270
	W	1450	1250	1060	880	710	560	410	270	190	190
25	Q	5540	4990	4430	3880	3330	2770	2220	1660	1330	1330
	W	1340	1150	980	810	660	510	380	250	180	180
20	Q	5810	5230	4650	4070	3490	2910	2330	1740	1400	1400
	W	1220	1060	900	750	600	470	350	230	160	160

Heating

Outdoor temperature(°C)		Load(%)									
		100	90	80	70	60	50	40	30	20	10
20	Q	7470	6730	5980	5230	4480	3740	2990	2240	1490	1200
	W	1720	1470	1240	1030	830	650	500	360	250	200
15	Q	6750	6080	5400	4730	4050	3380	2700	2030	1350	1090
	W	1620	1390	1170	970	780	620	470	340	230	190
10	Q	6130	5520	4910	4290	3680	3070	2450	1840	1230	990
	W	1540	1320	1110	920	740	590	450	320	220	180
7	Q	5600	5040	4480	3920	3360	2800	2240	1680	1120	900
	W	1470	1260	1060	880	710	560	430	310	210	170
5	Q	5220	4700	4180	3660	3130	2610	2090	1570	1040	840
	W	1420	1220	1030	850	690	540	420	300	200	160
2	Q	4680	4210	3750	3280	2810	2340	1870	1400	940	750
	W	1360	1160	980	810	650	520	400	290	190	160
0	Q	3660	3290	2930	2560	2190	1830	1460	1100	730	590
	W	1200	1030	870	720	580	460	350	250	170	140
-5	Q	3660	3290	2930	2560	2190	1830	1460	1100	730	590
	W	1200	1030	870	720	580	460	350	250	170	140
-7	Q	3440	3090	2750	2410	2060	1720	1380	1030	690	550
	W	1170	1000	840	700	560	440	340	250	170	130
-10	Q	3150	2830	2520	2200	1890	1570	1260	940	630	510
	W	1120	960	810	670	540	430	330	240	160	130
-15	Q	2650	2390	2120	1860	1590	1330	1060	800	530	430
	W	1050	900	760	630	510	400	310	220	150	120

7.Part Load Performance

Indoor unit : RAV-SM802CT-E

Outdoor unit : RAV-SP804AT-E, RAV-SP804ATZ-E, RAV-SP804ATZG-E

	Cooling		Heating	
	Capacity Q(W)	Power consumption W(W)	Capacity Q(W)	Power consumption W(W)
MINIMUM	1900	300	1300	270
RATING	7100	2210	8000	2160

Cooling

Outdoor temperature(°C)		Load(%)									
		100	90	80	70	60	50	40	30	20	10
40	Q	6720	6040	5370	4700	4030	3360	2690	2010	1800	1800
	W	2370	1990	1650	1340	1050	800	570	380	320	320
35	Q	7100	6390	5680	4970	4260	3550	2840	2130	1900	1900
	W	2210	1861	1540	1247	982	744	535	353	300	300
30	Q	7480	6740	5990	5240	4490	3740	2990	2250	2000	2000
	W	2050	1730	1430	1160	910	690	500	330	280	280
25	Q	7870	7080	6300	5510	4720	3930	3150	2360	2110	2110
	W	1890	1590	1320	1070	840	640	460	300	260	260
20	Q	8250	7430	6600	5780	4950	4130	3300	2480	2210	2210
	W	1730	1460	1210	980	770	580	420	280	240	240

Heating

Outdoor temperature(°C)		Load(%)									
		100	90	80	70	60	50	40	30	20	10
20	Q	10680	9610	8540	7470	6410	5340	4270	3200	2140	1740
	W	2520	2140	1790	1540	1180	920	700	530	360	320
15	Q	9650	8680	7720	6750	5790	4820	3860	2890	1930	1570
	W	2380	2020	1690	1460	1110	870	660	500	340	300
10	Q	8760	7880	7010	6130	5260	4380	3500	2630	1750	1420
	W	2260	1910	1600	1380	1060	830	630	470	320	280
7	Q	8000	7200	6400	5600	4800	4000	3200	2400	1600	1300
	W	2160	1830	1530	1320	1010	790	600	450	310	270
5	Q	7460	6720	5970	5220	4480	3730	2990	2240	1490	1210
	W	2090	1770	1480	1280	980	770	580	440	300	260
2	Q	6690	6020	5350	4680	4010	3340	2680	2010	1340	1090
	W	1990	1690	1410	1220	930	730	550	410	290	250
0	Q	5220	4700	4180	3660	3130	2610	2090	1570	1040	850
	W	1770	1500	1250	1080	830	650	490	370	250	220
-5	Q	5220	4700	4180	3660	3130	2610	2090	1570	1040	850
	W	1770	1500	1250	1080	830	650	490	370	250	220
-7	Q	4910	4420	3930	3440	2950	2460	1960	1470	980	800
	W	1720	1450	1210	1050	800	630	480	360	250	210
-10	Q	4500	4050	3600	3150	2700	2250	1800	1350	900	730
	W	1640	1390	1160	1000	770	600	460	340	240	210
-15	Q	3790	3410	3030	2650	2280	1900	1520	1140	760	620
	W	1550	1310	1100	950	720	570	430	320	220	190

7.Part Load Performance

Indoor unit : RAV-SM562KRT-E

Outdoor unit : RAV-SP564AT-E, RAV-SP564ATZ-E, RAV-SP564ATZG-E

	Cooling		Heating	
	Capacity Q(W)	Power consumption W(W)	Capacity Q(W)	Power consumption W(W)
MINIMUM	1200	210	900	170
RATING	5000	1560	5600	1550

Cooling

Outdoor temperature(°C)		Load(%)									
		100	90	80	70	60	50	40	30	20	10
40	Q	4730	4260	3780	3310	2840	2360	1890	1420	1140	1140
	W	1670	1440	1230	1020	830	640	470	310	230	230
35	Q	5000	4500	4000	3500	3000	2500	2000	1500	1200	1200
	W	1560	1346	1143	951	770	600	441	293	210	210
30	Q	5270	4740	4220	3690	3160	2640	2110	1580	1270	1270
	W	1450	1250	1060	880	710	560	410	270	190	190
25	Q	5540	4990	4430	3880	3330	2770	2220	1660	1330	1330
	W	1340	1150	980	810	660	510	380	250	180	180
20	Q	5810	5230	4650	4070	3490	2910	2330	1740	1400	1400
	W	1220	1060	900	750	600	470	350	230	160	160

Heating

Outdoor temperature(°C)		Load(%)									
		100	90	80	70	60	50	40	30	20	10
20	Q	7470	6730	5980	5230	4480	3740	2990	2240	1490	1200
	W	1810	1550	1320	1100	890	700	540	390	250	200
15	Q	6750	6080	5400	4730	4050	3380	2700	2030	1350	1090
	W	1710	1470	1250	1040	840	660	510	360	230	190
10	Q	6130	5520	4910	4290	3680	3070	2450	1840	1230	990
	W	1620	1390	1180	980	790	630	480	340	220	180
7	Q	5600	5040	4480	3920	3360	2800	2240	1680	1120	900
	W	1550	1330	1130	940	760	600	460	330	210	170
5	Q	5220	4700	4180	3660	3130	2610	2090	1570	1040	840
	W	1500	1290	1090	910	740	580	450	320	200	160
2	Q	4680	4210	3750	3280	2810	2340	1870	1400	940	750
	W	1430	1230	1040	870	700	550	420	300	190	160
0	Q	3660	3290	2930	2560	2190	1830	1460	1100	730	590
	W	1270	1090	930	770	620	490	380	270	170	140
-5	Q	3660	3290	2930	2560	2190	1830	1460	1100	730	590
	W	1270	1090	930	770	620	490	380	270	170	140
-7	Q	3440	3090	2750	2410	2060	1720	1380	1030	690	550
	W	1230	1060	900	750	600	480	370	260	170	130
-10	Q	3150	2830	2520	2200	1890	1570	1260	940	630	510
	W	1180	1010	860	720	580	460	350	250	160	130
-15	Q	2650	2390	2120	1860	1590	1330	1060	800	530	430
	W	1110	950	810	670	550	430	330	240	150	120

7.Part Load Performance

Indoor unit : RAV-SM802KRT-E

Outdoor unit : RAV-SP804AT-E, RAV-SP804ATZ-E, RAV-SP804ATZG-E

	Cooling		Heating	
	Capacity Q(W)	Power consumption W(W)	Capacity Q(W)	Power consumption W(W)
MINIMUM	1900	300	1300	270
RATING	6900	2400	8000	2400

Cooling

Outdoor temperature(°C)		Load(%)									
		100	90	80	70	60	50	40	30	20	10
40	Q	6530	5870	5220	4570	3920	3260	2610	1960	1800	1800
	W	2570	2140	1750	1390	1080	800	560	360	320	320
35	Q	6900	6210	5520	4830	4140	3450	2760	2070	1900	1900
	W	2400	1997	1630	1299	1005	747	525	340	300	300
30	Q	7270	6550	5820	5090	4360	3640	2910	2180	2000	2000
	W	2230	1850	1510	1210	930	690	490	320	280	280
25	Q	7650	6880	6120	5350	4590	3820	3060	2290	2110	2110
	W	2060	1710	1400	1110	860	640	450	290	260	260
20	Q	8020	7220	6420	5610	4810	4010	3210	2410	2210	2210
	W	1880	1570	1280	1020	790	590	410	270	240	240

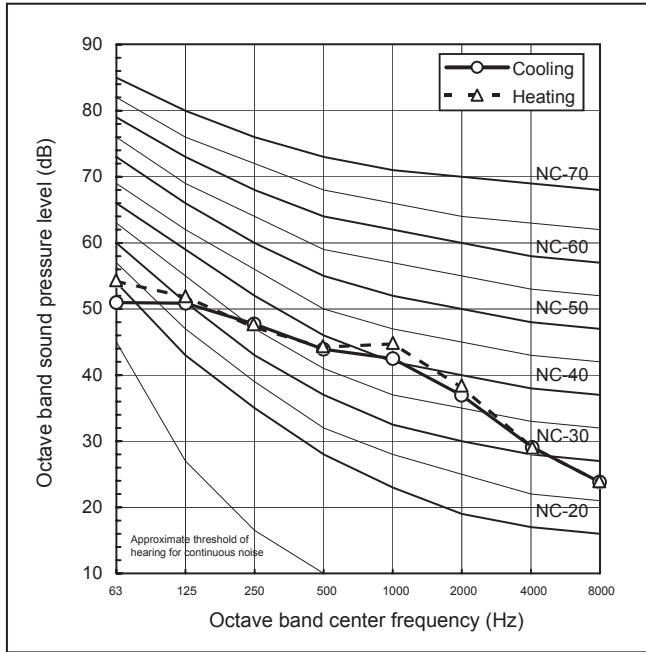
Heating

Outdoor temperature(°C)		Load(%)									
		100	90	80	70	60	50	40	30	20	10
20	Q	10680	9610	8540	7470	6410	5340	4270	3200	2140	1740
	W	2800	2350	1940	1580	1250	960	720	530	360	320
15	Q	9650	8680	7720	6750	5790	4820	3860	2890	1930	1570
	W	2650	2220	1830	1490	1180	900	680	500	340	300
10	Q	8760	7880	7010	6130	5260	4380	3500	2630	1750	1420
	W	2510	2100	1730	1410	1120	860	650	470	320	280
7	Q	8000	7200	6400	5600	4800	4000	3200	2400	1600	1300
	W	2400	2010	1660	1350	1070	820	620	450	310	270
5	Q	7460	6720	5970	5220	4480	3730	2990	2240	1490	1210
	W	2330	1950	1610	1310	1040	790	600	440	300	260
2	Q	6690	6020	5350	4680	4010	3340	2680	2010	1340	1090
	W	2210	1850	1530	1240	990	760	570	410	290	250
0	Q	5220	4700	4180	3660	3130	2610	2090	1570	1040	850
	W	1970	1650	1360	1110	880	670	510	370	250	220
-5	Q	5220	4700	4180	3660	3130	2610	2090	1570	1040	850
	W	1970	1650	1360	1110	880	670	510	370	250	220
-7	Q	4910	4420	3930	3440	2950	2460	1960	1470	980	800
	W	1910	1600	1320	1070	850	650	490	360	250	210
-10	Q	4500	4050	3600	3150	2700	2250	1800	1350	900	730
	W	1830	1530	1260	1030	810	620	470	340	240	210
-15	Q	3790	3410	3030	2650	2280	1900	1520	1140	760	620
	W	1720	1440	1190	970	770	590	440	320	220	190

8.Sound Characteristics (NC Curve)

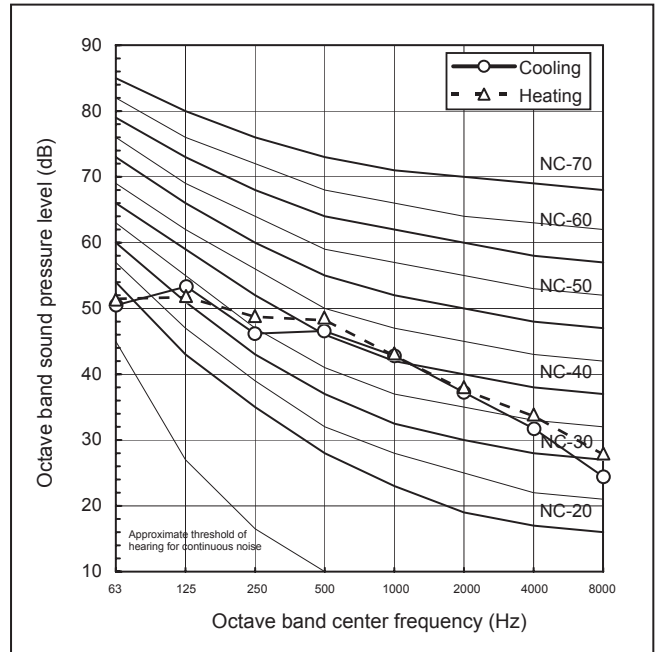
RAV-SP564AT-E,
RAV-SP564ATZ-E,
RAV-SP564ATZG-E

Sound pressure level (dB(A))	Cooling	Heating
	47	48



RAV-SP804AT-E,
RAV-SP804ATZ-E,
RAV-SP804ATZG-E

Sound pressure level (dB(A))	Cooling	Heating
	48	49



TOSHIBA CARRIER CORPORATION

23-17, TAKANAWA 3-CHOME, MINATO-KU, TOKYO, 108-0074, JAPAN

Copyright © 2009 TOSHIBA CARRIER CORPORATION, ALL Rights Reserved.