

Proposed Front Elevation - South-West
Scale 1:50 @A1

PROPOSED

| | |
|----------------|--|
| Issued For | PLANNING |
| General Notes: | THIS DRAWING HAS BEEN PREPARED BY DS DESIGN SOLUTIONS AND THE DATA CONTAINED HEREIN MAY BE USED OR REPRODUCED ONLY WITH DS DESIGN SOLUTIONS' APPROVAL. |

| Rev. | Description | Date | Signed | Checked |
|------|--|------------|--------|---------|
| 01 | Elevation revised to suit revised plans | 21.03.2014 | MJ | DS |
| 02 | Elevation revised to show proposed brick coiling and proposed external joinery painted black | 12.11.2015 | MJ | DS |

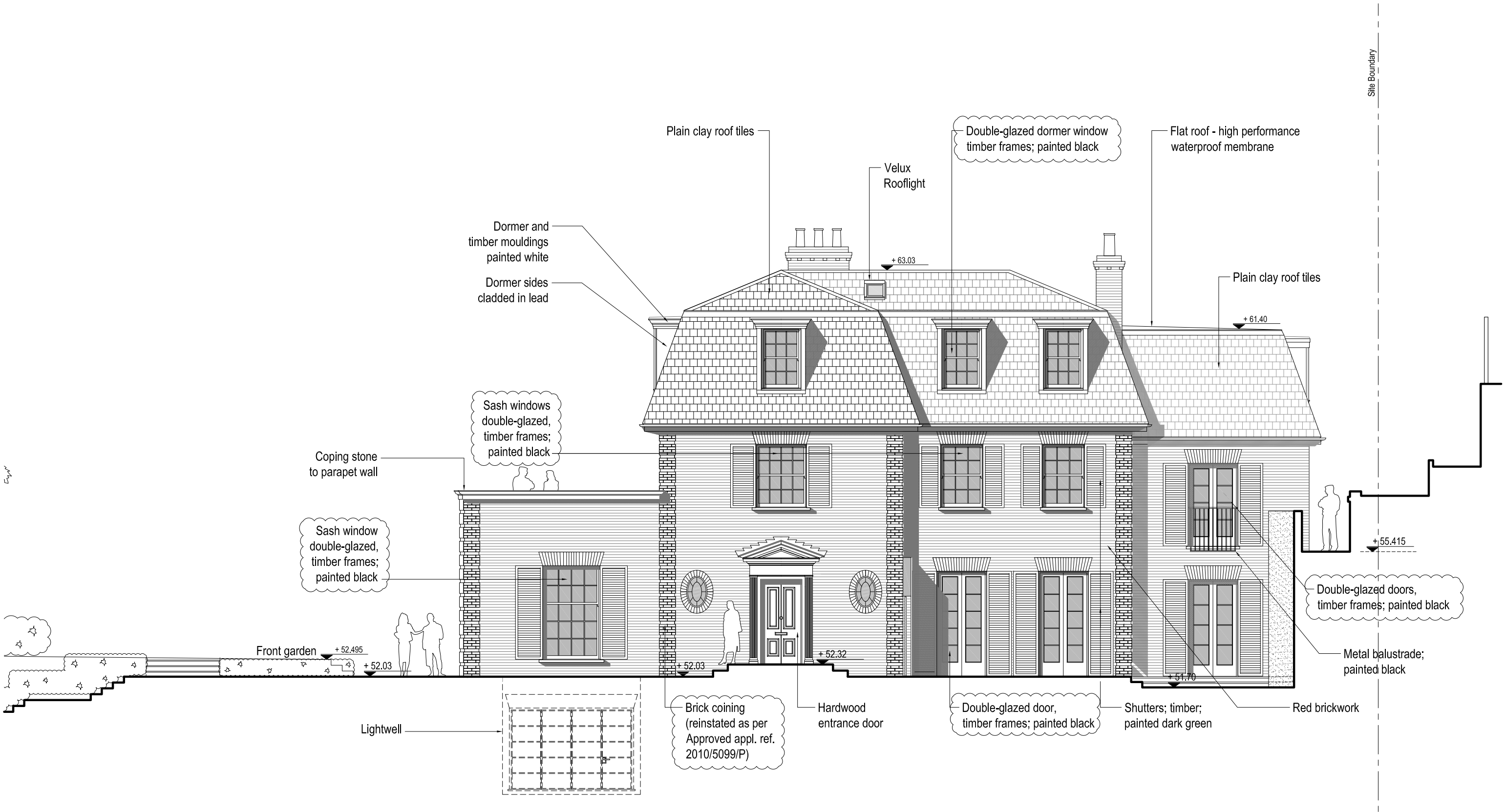
| | | | | |
|--|--|--|--|--|
| | | | | |
|--|--|--|--|--|

| | | | | |
|--|--|--|--|--|
| | | | | |
|--|--|--|--|--|

| |
|---|
| Drawing Scale = 1:50 @ A1 1:100 @ A3 |
|---|

| | | | |
|---------------------------------------|------------|----------|------------|
| Scale | Date | Drawn by | Checked by |
| 1:50 @ A1 | 21.03.2014 | MJ | DS |
| Drawing Title | | | |
| Proposed Front Elevation - South-West | | | |
| Project | | | |
| 18 Redington Road London NW3 7RG | | | |

| | | | |
|--------|--|-------------|-------------|
| | 561 Finchley Road London NW3 7BJ Phone 020 7433 3939 Fax 020 7794 4279 | | |
| | design solutions www.DesignSolutionsUK.com | Project no. | Drawing no. |
| 13/220 | C-206 | 02 | |



Proposed Side Elevation - South-East
Scale 1:50 @A1

PROPOSED

| | |
|----------------|--|
| Issued For | PLANNING |
| General Notes: | THIS DRAWING HAS BEEN PREPARED BY DS DESIGN SOLUTIONS AND THE DATA CONTAINED HEREIN MAY BE USED OR REPRODUCED ONLY WITH DS DESIGN SOLUTIONS' APPROVAL. |

| Rev. | Description | Date | Signed | Checked |
|------|--|------------|--------|---------|
| 01 | Elevation revised to suit revised plans | 21.03.2014 | MJ | DS |
| 02 | Elevation revised to show proposed brick coining and proposed external joinery painted black | 12.11.2015 | MJ | DS |

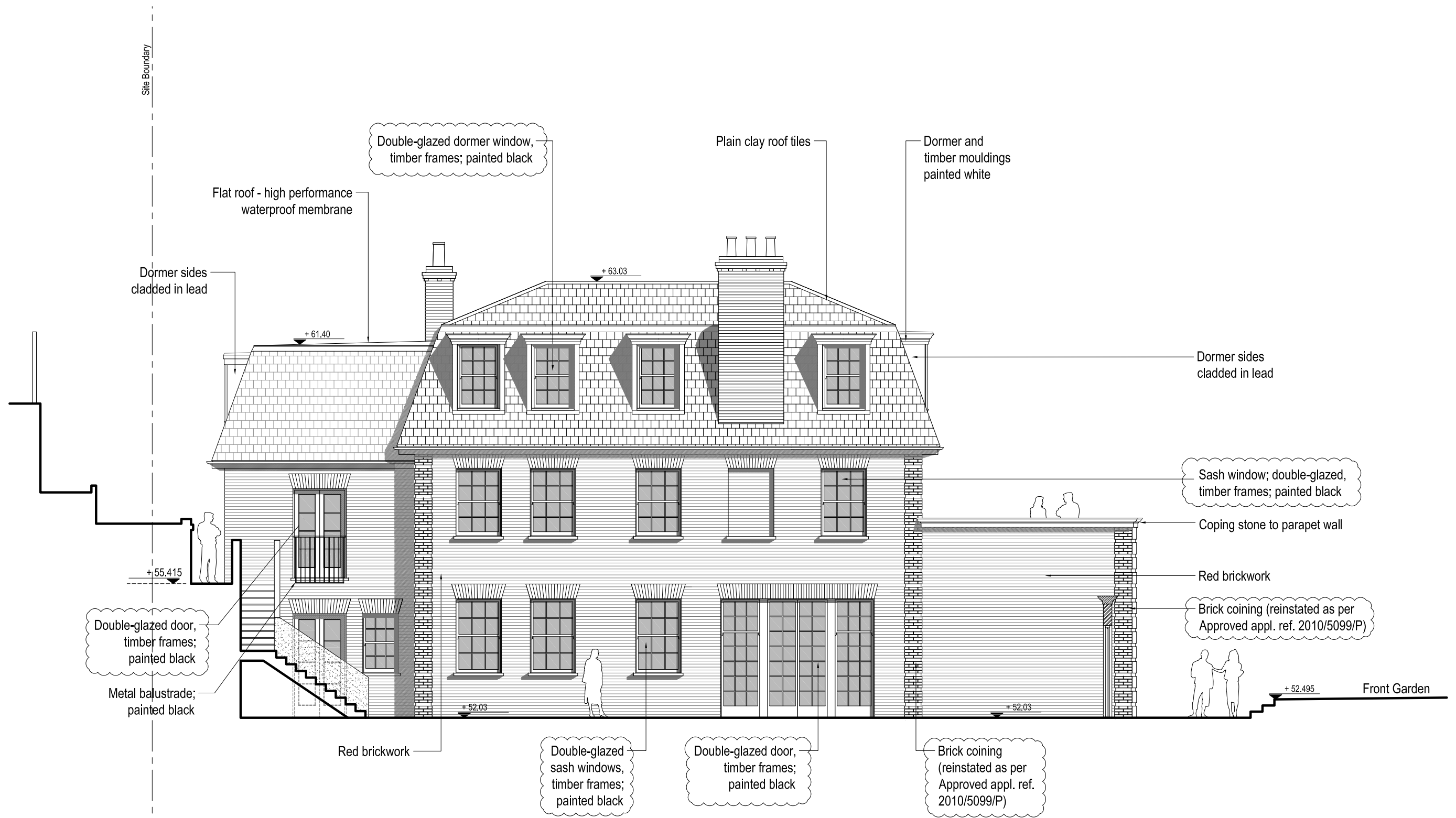
| | | | | |
|--|--|--|--|--|
| | | | | |
|--|--|--|--|--|

| | | | | |
|--|--|--|--|--|
| | | | | |
|--|--|--|--|--|

| | |
|---|--|
| Drawing Scale = 1:50 @ A1 1:100 @ A3 | |
|---|--|

| | | | | | | | |
|---------------|--------------------------------------|------|------------|----------|----|------------|----|
| Scale | 1:50 @ A1 | Date | 21.03.2014 | Drawn by | MJ | Checked by | DS |
| Drawing Title | Proposed Side Elevation - South-East | | | | | | |
| Project | 18 Redington Road London NW3 7RG | | | | | | |

| | | | | | | |
|--|--|-------------|--------|-------------|-------|----------|
| | 561 Finchley Road London NW3 7BJ Phone 020 7433 3939 Fax 020 7794 4279 | | | | | |
| | design solutions www.DesignSolutionsUK.com | Project no. | 13/220 | Drawing no. | C-207 | Revision |



Proposed Side Elevation - North-West
Scale 1:50 @A1

PROPOSED

Issued For
PLANNING

General Notes:
THIS DRAWING HAS BEEN PREPARED BY DS DESIGN SOLUTIONS AND THE DATA CONTAINED HEREIN MAY BE USED OR REPRODUCED ONLY WITH DS DESIGN SOLUTIONS' APPROVAL.

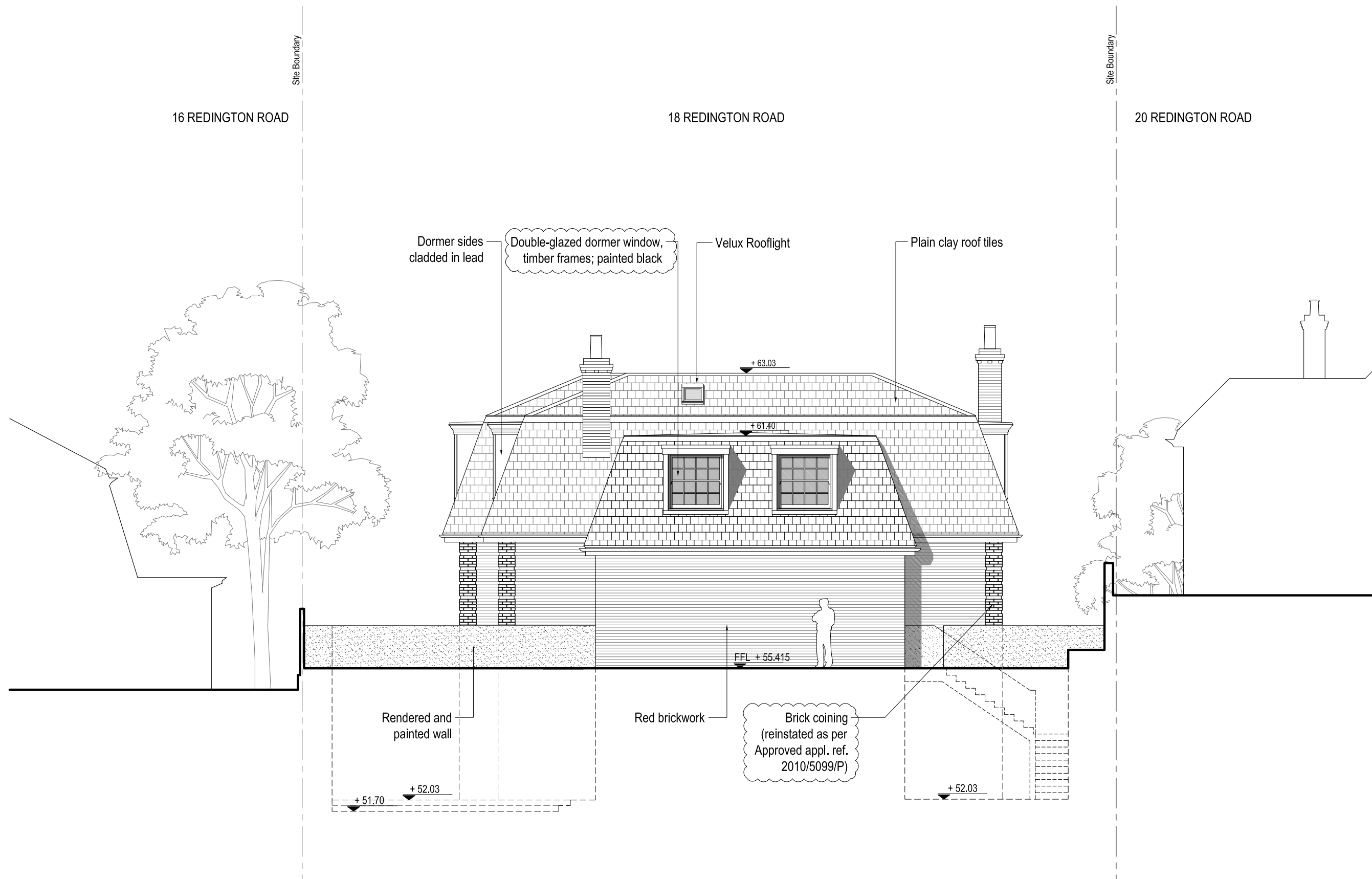
| Rev. | Description | Date | Signed | Checked |
|------|--|------------|--------|---------|
| 01 | Door to Kitchen revised | 24.07.2013 | MJ | DS |
| 02 | Elevation revised to suit revised plans | 21.03.2014 | MJ | DS |
| 03 | Elevation revised to show proposed brick coining and proposed external joinery painted black | 12.11.2015 | MJ | DS |

| | | | |
|--|--|--|--|
| | | | |
|--|--|--|--|

| | |
|---|--|
| Drawing Scale = 1:50 @ A1 1:100 @ A3 | |
|---|--|

| | | | |
|--|--------------------|----------------|------------------|
| Scale 1:50 @ A1 | Date 21.03.2014 | Drawn by MJ | Checked by DS |
| Drawing Title Proposed Side Elevation - North-West | | | |
| Project 18 Redington Road London NW3 7RG | | | |

| | | | |
|-------------------------------|--|----------------------|----------------|
| DS design solutions | 561 Finchley Road London NW3 7BJ Phone 020 7433 3939 Fax 020 7794 4279 www.DesignSolutionsUK.com | | |
| | Project no. 13/220 | Drawing no. C-208 | Revision 03 |



Proposed Rear Elevation - North-East
Scale 1:50 @A1

PROPOSED

| | |
|----------------|--|
| Issued For | PLANNING |
| General Notes: | THIS DRAWING HAS BEEN PREPARED BY DS DESIGN SOLUTIONS AND THE DATA CONTAINED HEREIN MAY BE USED OR REPRODUCED ONLY WITH DS DESIGN SOLUTIONS' APPROVAL. |

| Rev. | Description | Date | Signed | Checked |
|------|--|------------|--------|---------|
| 01 | Elevation revised to suit revised plans | 21.03.2014 | MJ | DS |
| 02 | Elevation revised to show proposed brick coining and proposed external joinery painted black | 12.11.2015 | MJ | DS |

| | | |
|--|--|--|
| | | |
|--|--|--|

| | |
|---|--|
| Drawing Scale = 1:50 @ A1 1:100 @ A3 | |
|---|--|

| | | | | | | | |
|--|-----------|------|------------|----------|----|------------|----|
| Scale | 1:50 @ A1 | Date | 21.03.2014 | Drawn by | MJ | Checked by | DS |
| Drawing Title Proposed Rear Elevation - North-East | | | | | | | |
| Project 18 Redington Road London NW3 7RG | | | | | | | |

| | | | |
|-------------------------------|--|-------------|----------|
| DS design solutions | 561 Finchley Road London NW3 7BJ Phone 020 7433 3939 Fax 020 7794 4279 www.DesignSolutionsUK.com | | |
| | Project no. | Drawing no. | Revision |
| 13/220 | C-209 | 02 | |