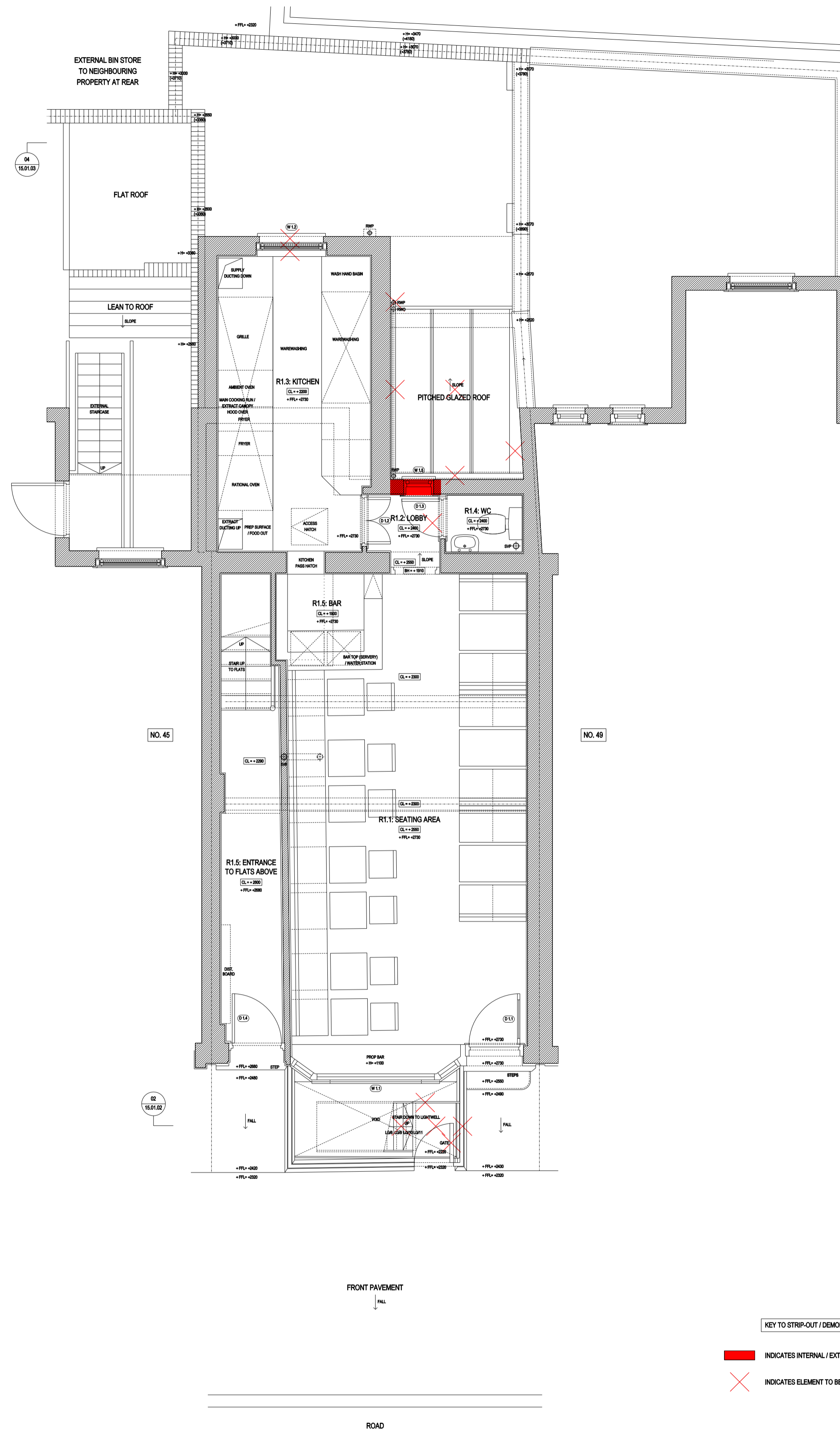


CARPARK AND BIN STORES TO HERBRAND ESTATE



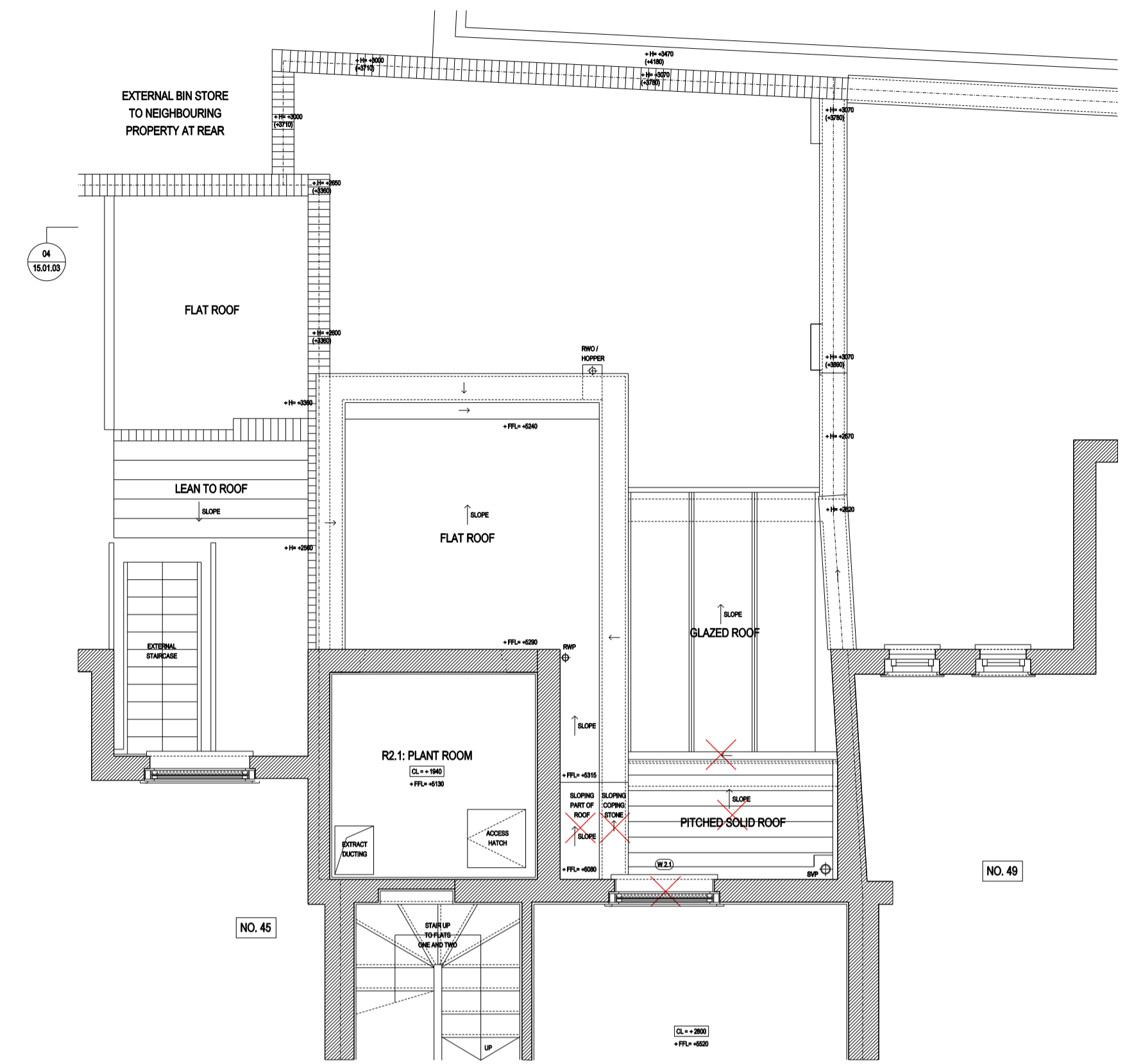
01 EXISTING LOWER GROUND FLOOR: GENERAL ARRANGEMENT PLAN 01
Scale 1:50 (@A1 SIZE)

CARPARK AND BIN STORES TO HERBRAND ESTATE



02 EXISTING GROUND FLOOR: GENERAL ARRANGEMENT PLAN 02
Scale 1:50 (@A1 SIZE)

CARPARK AND BIN STORES TO HERBRAND ESTATE



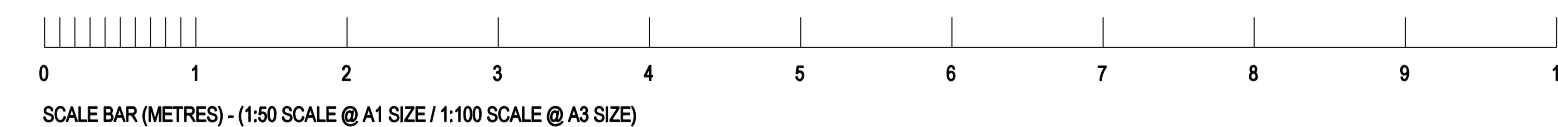
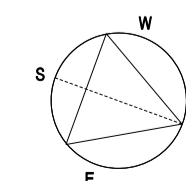
03 EXISTING PART FIRST FLOOR: GENERAL ARRANGEMENT PLAN 03
Scale 1:50 (@A1 SIZE)

KEY TO STRIP-OUT / DEMOLITIONS:

INDICATES INTERNAL / EXTERNAL WALLS TO BE REMOVED

INDICATES ELEMENT TO BE REMOVED

ROAD



31.10.15 ISSUE FOR PLANNING & LB CONSENT			
rev	date	reason	by



Unit 6: Masons Yard
177 Westbourne Street t: +44 (0) 1273 201 830
Hove e: steve@searyarchitects.co.uk
East Sussex BN3 5FB w: www.searyarchitects.co.uk

project:	47 Marsham Street, London, WC1N 1AP
client:	Mr M Abommes
dwg title:	Existing Lower Ground, Ground & Part First Floor: GA Plans
dwg no:	15-01-01
scale:	1:50 (@A1 SIZE)
project no:	0411
rev:	
date:	31.10.15
status:	PLANNING & LB