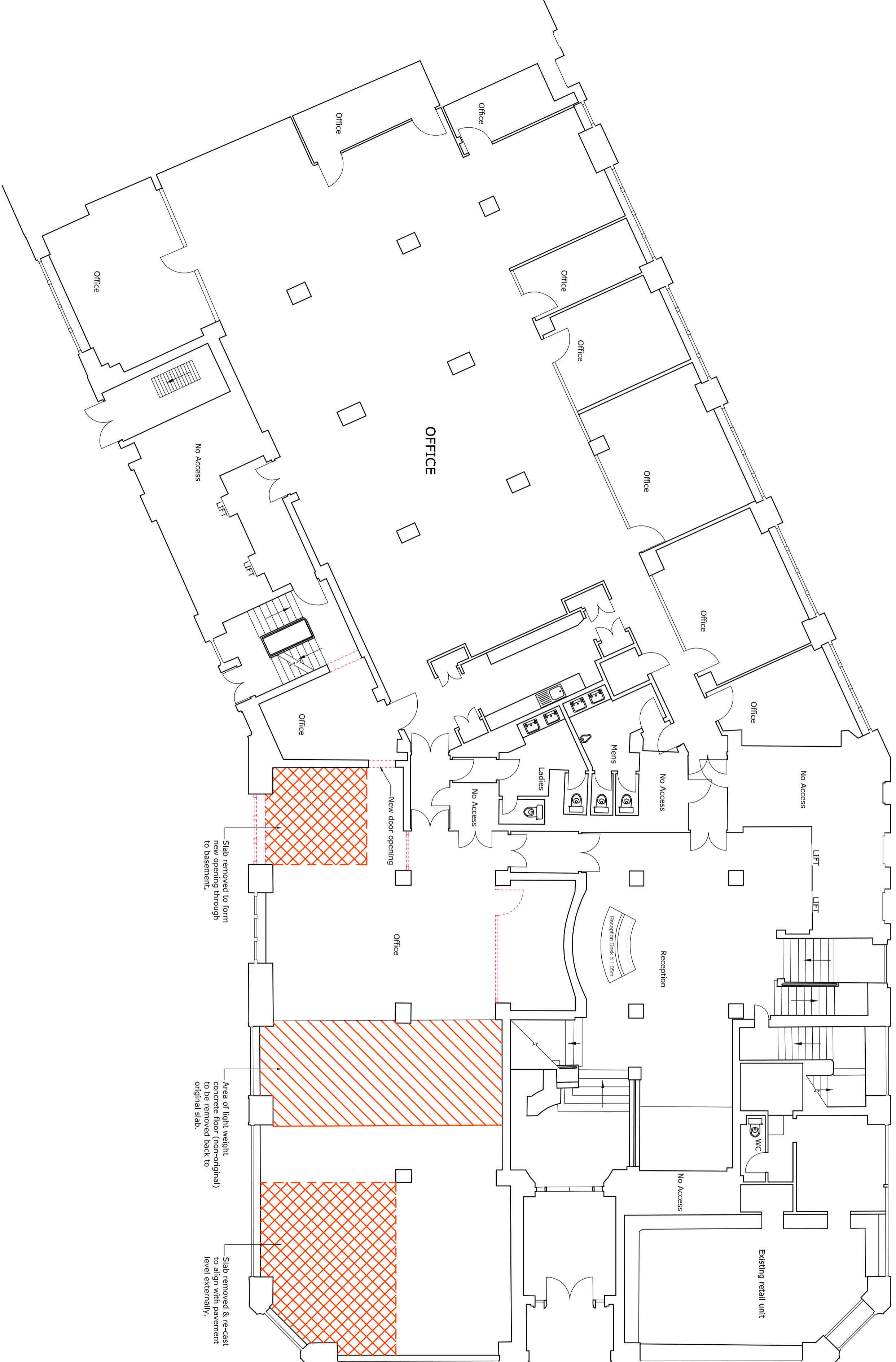




- Works to be demolished
- ▨ Area of light weight screed to be removed
- ▨ Area of slab to be demolished



Slab removed to form new opening through to basement.

Area of light weight concrete floor (non-original) to be removed back to original slab.

Slab removed & re-cast to align with pavement level externally.

Rev	Date	Revisions	By	CHK'D
B	23.12.13	New door opening, new area of slab	GG	IN
A	10.06.13	New walls to basement slab.	GG	IN

Drawing Status
FOR PLANNING

Project title
 65 Kingsway
 London

Drawing title
 Planning - Retail - Change of use
 Demolition
 Ground Floor

Sheet	Scale	Date	Drawn	CHK'D
A2	1:100	16.07.15	GG	IM

Project no
 3017
 Drawing no
 05005
 Rev
 B